

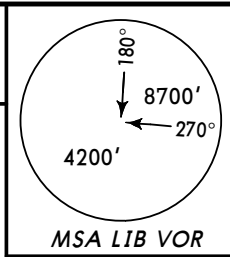
**MRLB/LIR**  
**DANIEL ODUBER QUIROS INTL**

**JEPPESEN**  
 10-2 11 JAN 08

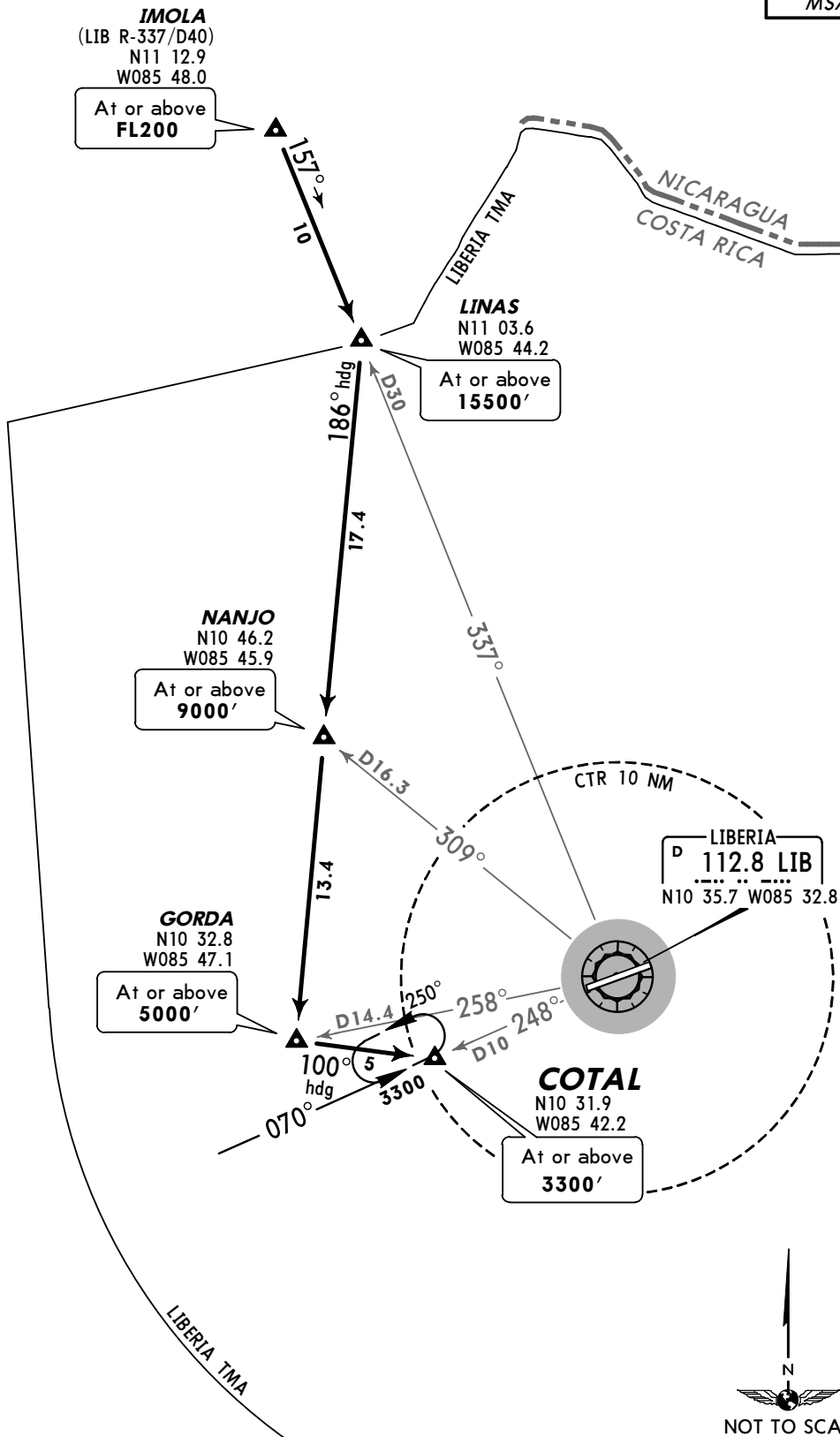
**LIBERIA, COSTA RICA**  
**STAR**

**Apt Elev**  
**269'**

Alt Set: hPa Trans level: FL200 Trans alt: 19000'  
 1. Due to traffic, cross each waypoint at depicted altitudes.  
 2. EXPECT approach authorization before crossing GORDA.



**COTAL NORTH ARRIVAL**



**ROUTING**

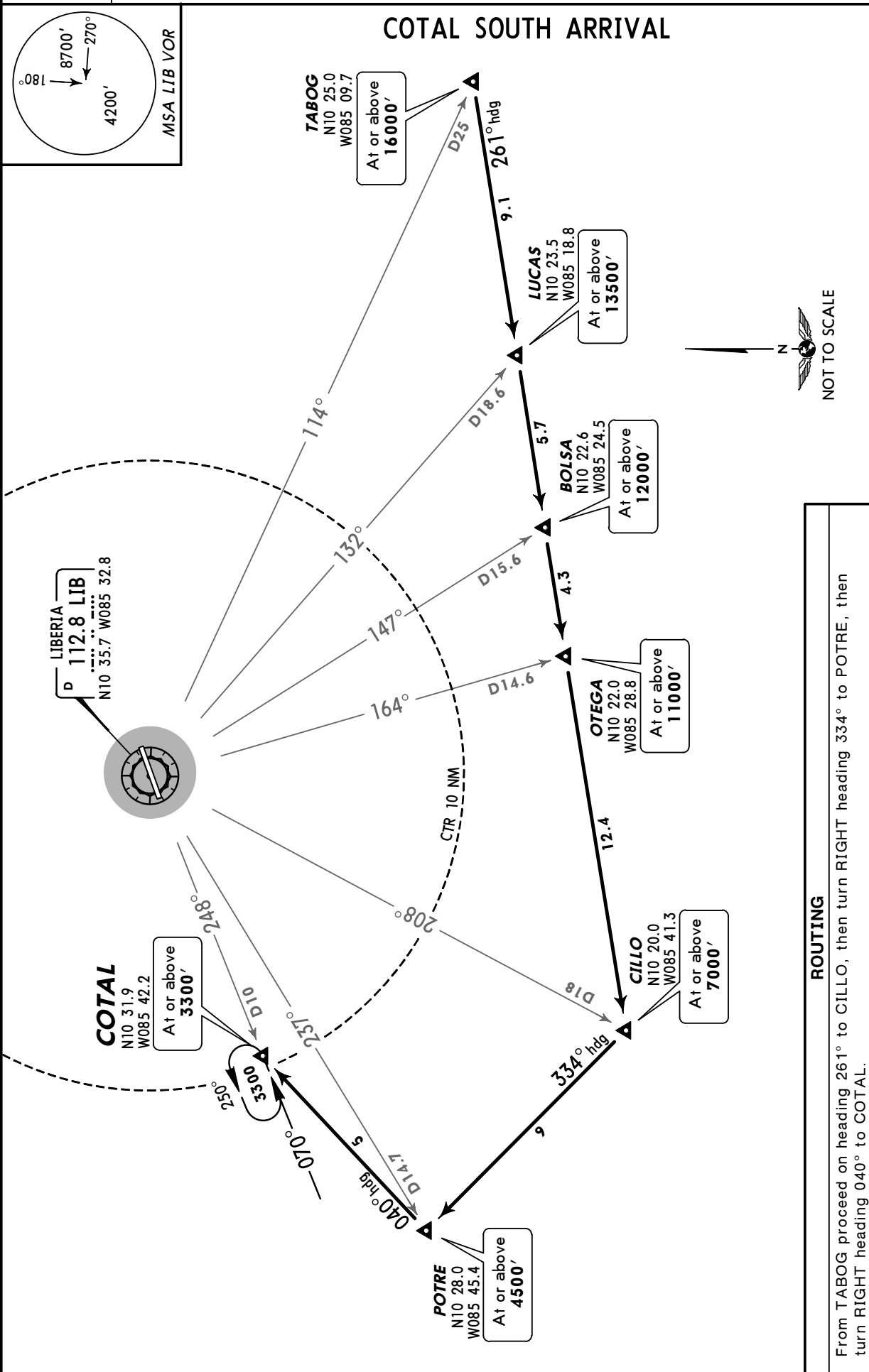
From IMOLA proceed on heading 157° to LINAS, then turn RIGHT heading 186° to GORDA, then turn LEFT heading 100° to COTAL.

**MRLB/LIR**  
**DANIEL ODUBER QUIROS INTL**

**JEPPESEN**  
**10-2A** 11 JAN 08

**LIBERIA, COSTA RICA**  
**STAR**

Apt Elev **269'** Alt Set: hPa Trans level: FL200 Trans alt: 19000'  
 1. Due to traffic, cross each waypoint at depicted altitudes.  
 2. EXPECT approach authorization before crossing POTRE.



**ROUTING**  
 From TABOG proceed on heading 261° to CILLO, then turn RIGHT heading 334° to POTRE, then turn RIGHT heading 040° to COTAL.

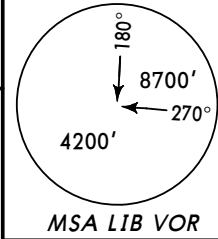
**MRLB/LIR**  
**DANIEL ODUBER QUIROS INTL**

**JEPPESEN**  
**(10-2B)** 15 JUN 07

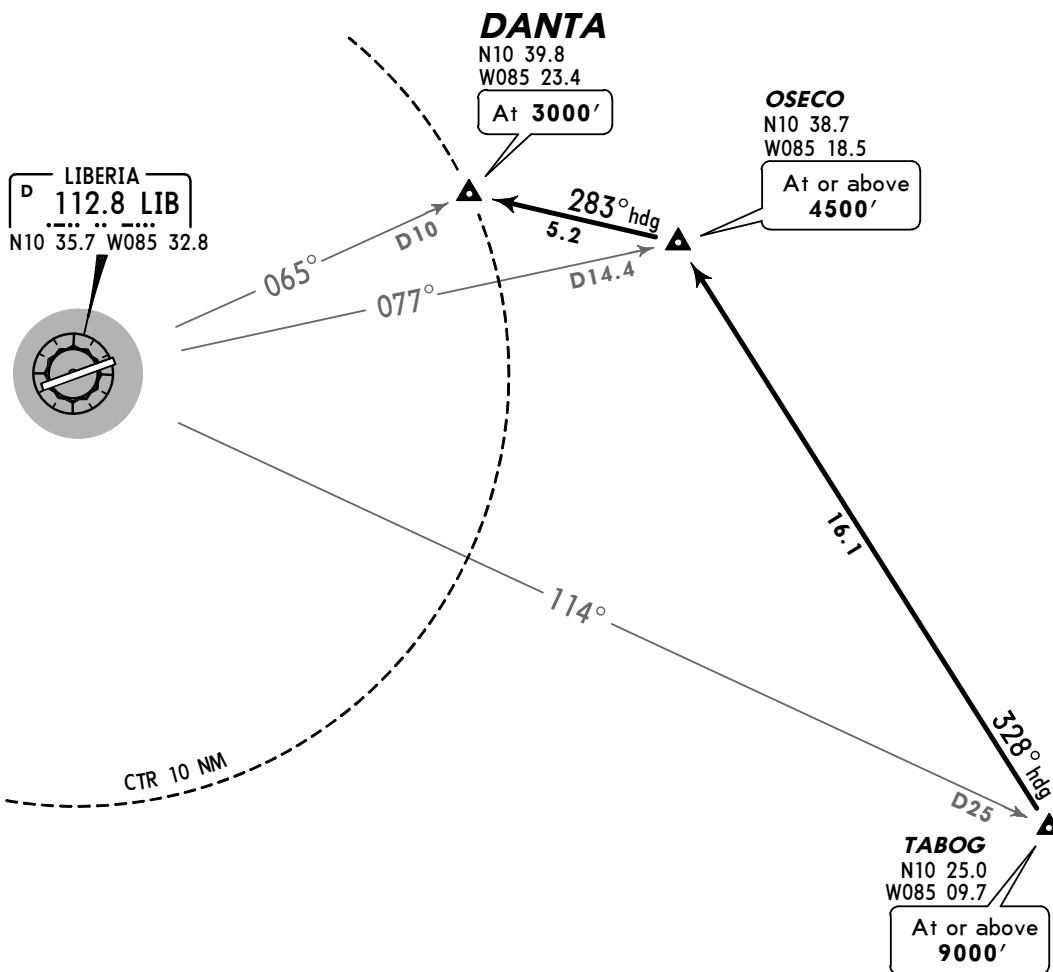
**LIBERIA, COSTA RICA**  
**STAR**

Apt Elev  
**269'**

Alt Set: hPa Trans level: FL200 Trans alt: 19000'  
1. Due to traffic, cross each waypoint at depicted altitudes.  
2. EXPECT approach authorization before crossing OSECO.



### DANTA ARRIVAL



#### ROUTING

From TABOG proceed on heading 328° to OSECO, then turn LEFT heading 283° to DANTA.

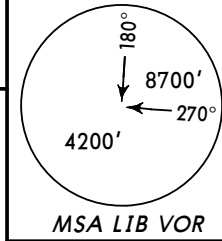


**MRLB/LIR**  
**DANIEL ODUBER QUIROS INTL**

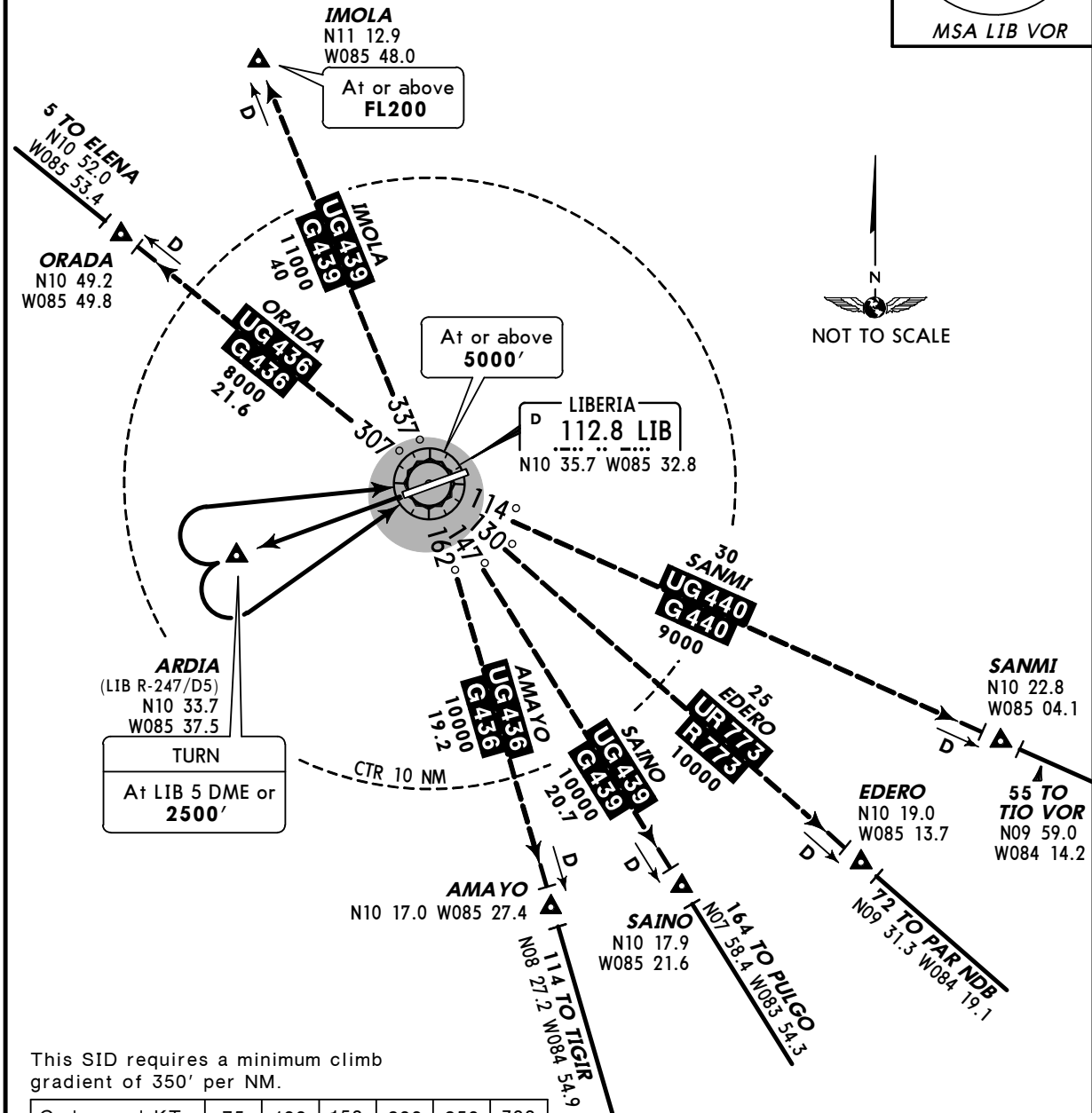
**JEPPESEN**  
**(10-3A)** 14 DEC 07

**LIBERIA, COSTA RICA**  
**SID**

*LIBERIA Approach (DEP) <b>119.8</b>	Apt Elev <b>269'</b>	Trans level: FL200    Trans alt: 19000'
---	-------------------------	---



**GUARDIA DEPARTURE**  
 (RWY 25)



This SID requires a minimum climb gradient of 350' per NM.

Gnd speed-KT	75	100	150	200	250	300
350' per NM	438	583	875	1167	1458	1750

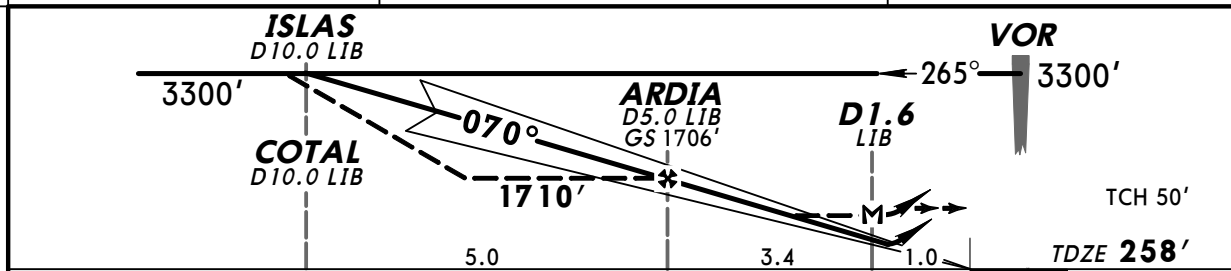
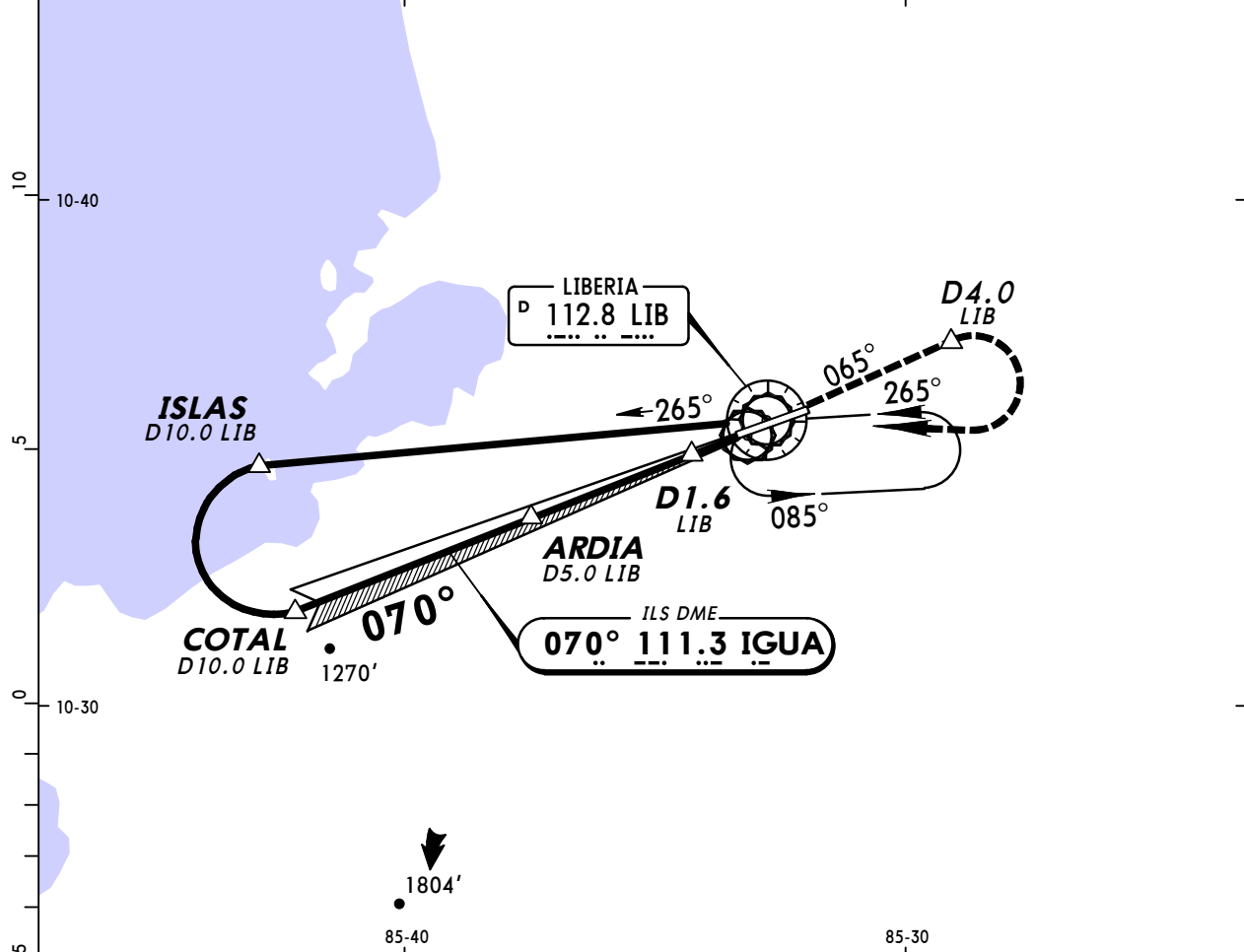
AIRWAY	INITIAL CLIMB
<b>NORTH</b> G/UG-436, G/UG-439	<b>MAINTAIN</b> runway heading with the maximum climb gradient possible to LIB 5 DME or <b>2500'</b> , then climbing LEFT turn to LIB. Leave LIB on the assigned route.
<b>SOUTH</b> G/UG-436, G/UG-439, G/UG-440, R/UR-773	<b>MAINTAIN</b> runway heading with the maximum climb gradient possible to LIB 5 DME or <b>2500'</b> , then climbing RIGHT turn to LIB. Leave LIB on the assigned route.

TRANSITIONS	
<b>AMAYO (G/UG-436 SOUTH)</b>	Climb and <b>MAINTAIN 10000'</b> , EXPECT higher altitude after AMAYO.
<b>EDERO (R/UR-773)</b>	Climb and <b>MAINTAIN 12000'</b> , EXPECT higher altitude after EDERO.
<b>IMOLA (G/UG-439 NORTH)</b>	Climb and <b>MAINTAIN 18000'</b> , EXPECT higher altitude before IMOLA.
<b>ORADA (G/UG-436 NORTH)</b>	Climb and <b>MAINTAIN 11000'</b> , EXPECT higher altitude after ORADA.
<b>SAINO (G/UG-439 SOUTH)</b>	Climb and <b>MAINTAIN 11000'</b> , EXPECT higher altitude after SAINO.
<b>SANMI (G/UG-440)</b>	Climb and <b>MAINTAIN 9000'</b> , EXPECT higher altitude after SANMI.

CHANGES: SANMI transition revised.

**MRLB/LIR** **JEPPESEN** **LIBERIA, COSTA RICA**  
**DANIEL ODUBER QUIROS INTL** 14 DEC 07 **(11-1)** **ILS DME Rwy 07**

*LIBERIA Approach		*LIBERIA Tower			*Ground
119.8		118.8			121.7
LOC IGUA <b>111.3</b>	Final Apch Crs <b>070°</b>	GS <b>ARDIA</b> 1706' (1448')	ILS DA(H) <b>458' (200')</b>	Apt Elev 269'	
<b>MISSED APCH:</b> Climb outbound on LIB VOR R-065 to D4.0 LIB, then turn RIGHT and return to LIB VOR and hold. Cross LIB VOR at 3300'.					
Alt Set: hPa	TDZ Elev: 9 hPa	Trans level: FL 200	Trans alt: 19000'		MSA LIB VOR



Gnd speed-Kts	70	90	100	120	140	160	REIL PAPI-L	LIB on <b>112.8</b> <b>R-065</b>	D4.0 LIB	
GS	3.00°	377	484	538	646	753				861
MAP at D1.6 LIB or ARDIA to MAP	3.4	2:55	2:16	2:02	1:42	1:27				1:16

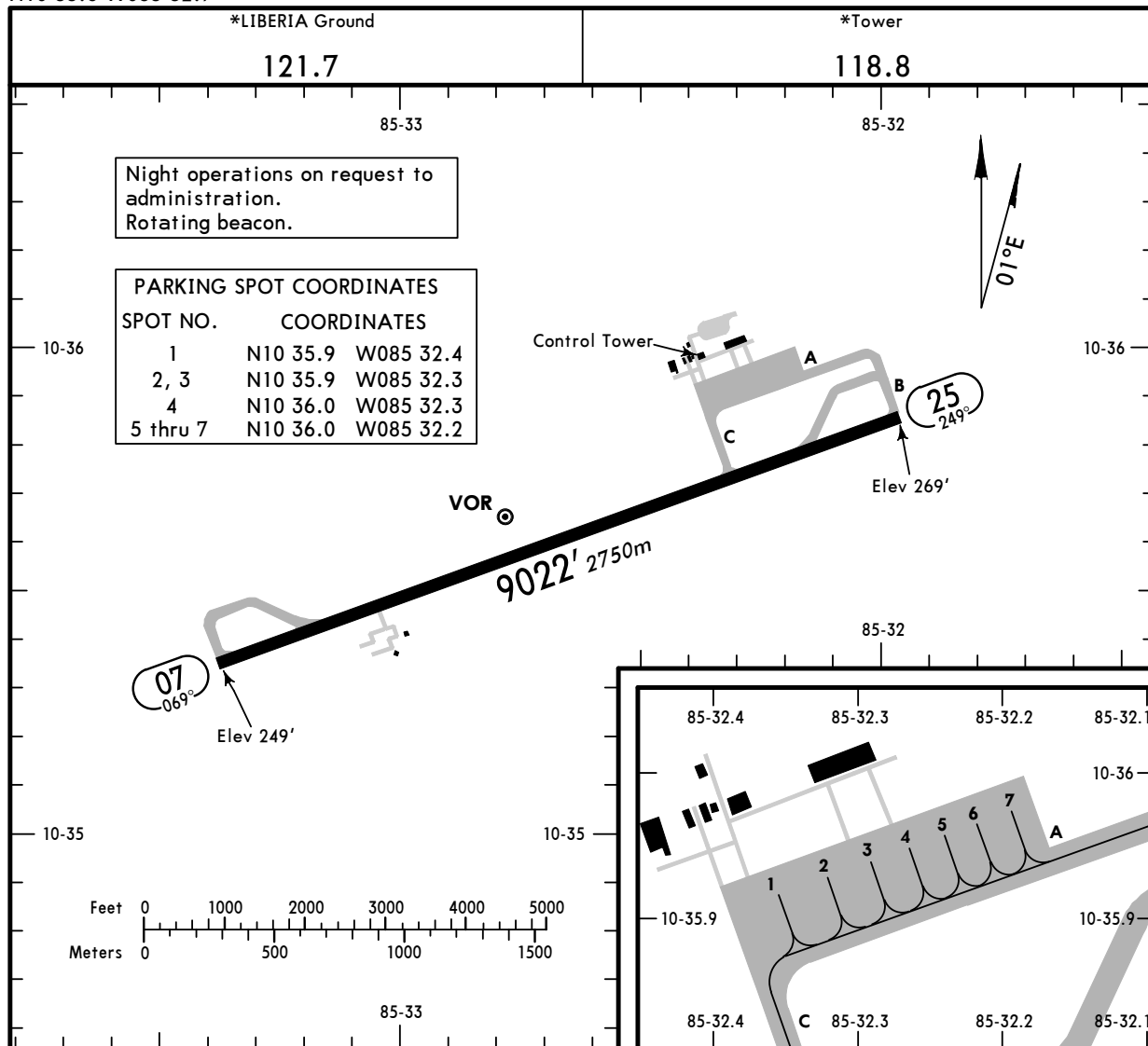
STRAIGHT-IN LANDING RWY 07		<b>CEILING REQUIRED</b>		CIRCLE-TO-LAND	
ILS DA(H) <b>458' (200')</b>		LOC (GS out) MDA(H) <b>660' (402')</b>			
CEILING-VISIBILITY					
A		A		NA	
B	200' - 1.4 km	B	400' - 1.9 km		
C		C			
D	200' - 1.6 km	D	400' - 2.3 km		

PANS OPS

**MRLB/LIR**  
 Apt Elev **269'**  
 N10 35.6 W085 32.7

**JEPPESEN**  
 14 DEC 07 **(11-1)**

**LIBERIA, COSTA RICA**  
**DANIEL ODUBER QUIROS INTL**



ADDITIONAL RUNWAY INFORMATION

RWY	HIRL REIL PAPI-L (angle 3.0°)	USABLE LENGTHS		TAKE-OFF	WIDTH
		Threshold	Glide Slope		
07 25	HIRL		7797' 2377m		148' 45m

TAKE-OFF		FOR FILING AS ALTERNATE	
All Rwys		VOR DME ARC Rwy 07 VOR DME Rwy 25	Other
1 & 2 Eng	1000' - 4.0 km	A	900' - 3.2 km
3 & 4 Eng		B C	
		D	

**MRLB/LIR**

**JEPPESEN**

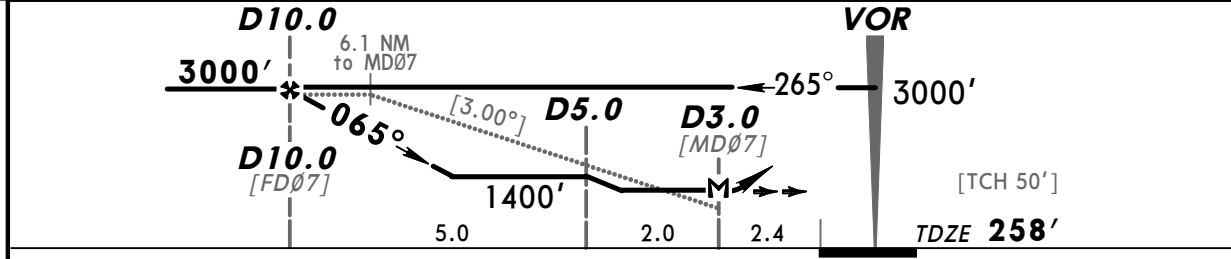
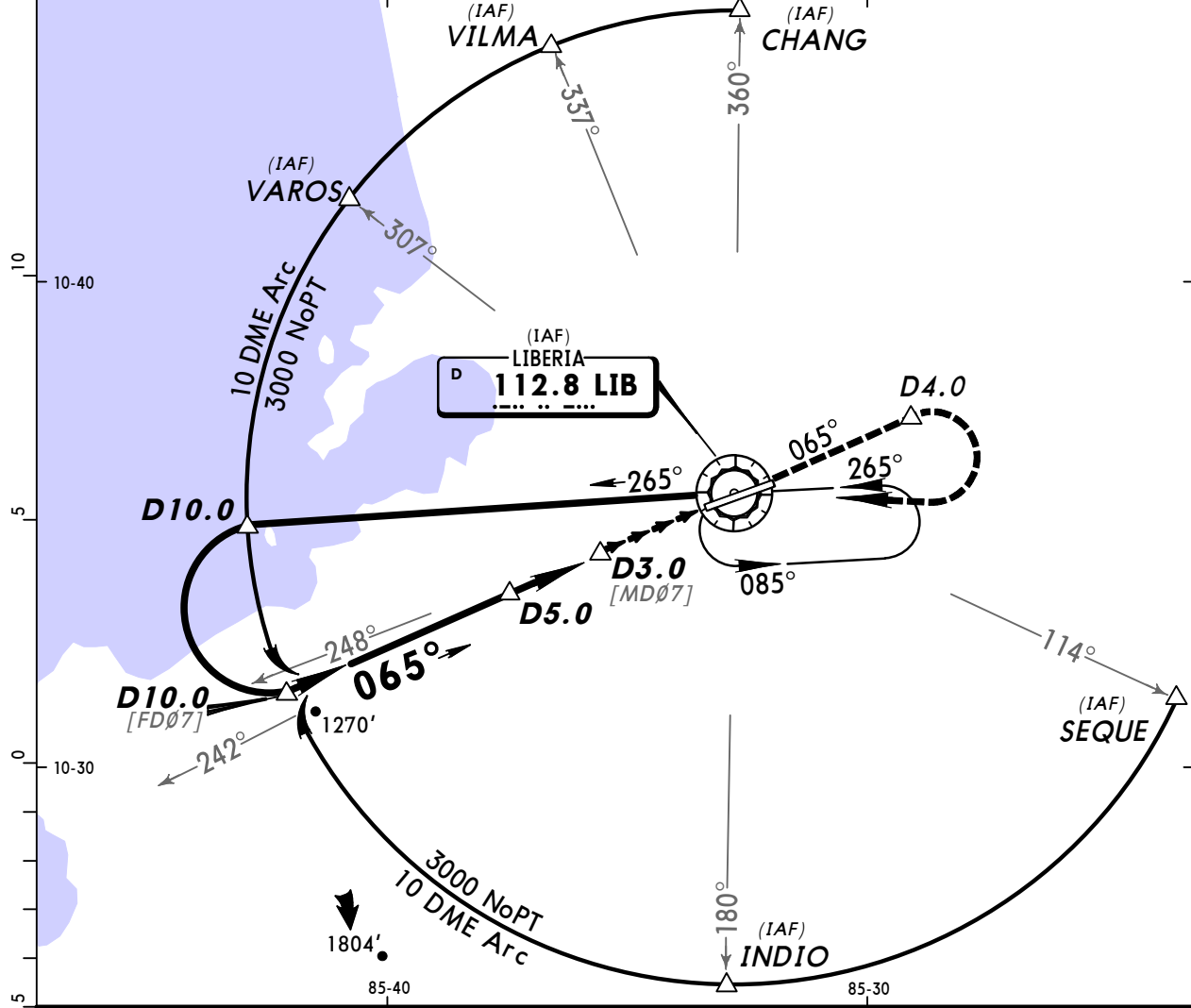
**LIBERIA, COSTA RICA**

7 OCT 05 (13-1)

**DANIEL ODUBER QUIROS INTL**

**VOR DME ARC Rwy 07**

*LIBERIA Approach <b>119.8</b>		*LIBERIA Tower <b>118.8</b>			*Ground <b>121.7</b>
VOR LIB <b>112.8</b>	Final Apt Crs <b>065°</b>	Minimum Alt <b>D10.0</b> 3000' (2742')	MDA(H) <b>1070'</b> (812')	Apt Elev <b>269'</b> TDZE <b>258'</b>	
<b>MISSED APCH:</b> Climb outbound on LIB VOR R-065 to D4.0, then turn RIGHT and return to LIB VOR and hold. Cross LIB VOR at 3000'.					
Alt Set: hPa		TDZ Elev: 9 hPa		Trans level: FL 200	
				Trans alt: 19000'	
					MSA LIB VOR



Gnd speed-Kts	70	90	100	120	140	160
Descent angle [3.00°]	372	478	531	637	743	849
MAP at D3.0						
FAF to MAP	7.0	6:00	4:40	4:12	3:30	3:00

REIL	LIB	
PAPI-L	on 112.8	D4.0
	R-065	

STRAIGHT-IN LANDING RWY 07		CIRCLE-TO-LAND	
MDA(H) 1070' (812')			

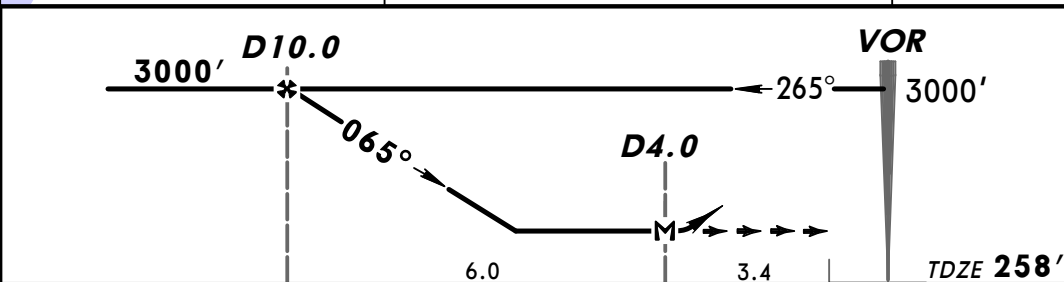
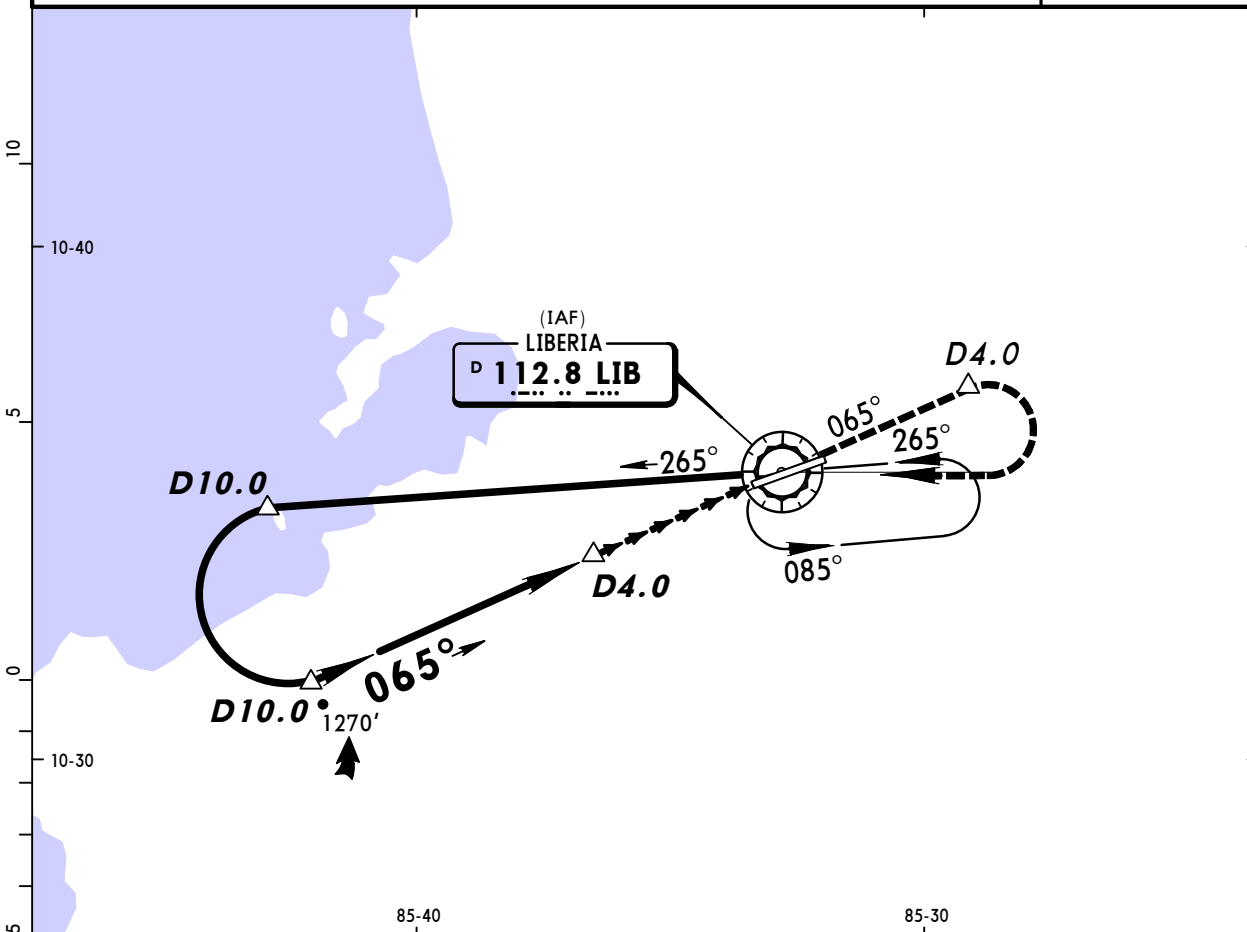
PANS OPS	A	3.0 km	A	NA
	B		B	
	C		C	
	D		D	

CHANGES: Procedure title, IAF added.

**MRLB/LIR**  
 DANIEL ODUBER QUIROS INTL

**JEPPESEN LIBERIA, COSTA RICA**  
 7 OCT 05 (13-2)  
**VOR Rwy 07**

*LIBERIA Approach		*LIBERIA Tower			*Ground
119.8		118.8			121.7
VOR LIB <b>112.8</b>	Final Apch Crs <b>065°</b>	Minimum Alt <b>D10.0</b> 3000' (2742')	MDA(H) <b>1580' (1322')</b>	Apt Elev 269' TDZE 258'	
<b>MISSED APCH:</b> Climb outbound on LIB VOR R-065 to D4.0, then turn RIGHT and return to LIB VOR at or above 3000'. Join holding pattern or continue outbound on LIB VOR R-265 to initiate another approach.					
Alt Set: hPa	TDZ Elev: 9 hPa	Trans level: FL 200	Trans alt: 19000'	MSA LIB VOR	



Gnd speed-Kts	70	90	100	120	140	160
MAP at D4.0						
FAF to MAP	6.0	5:09	4:00	3:36	3:00	2:34

REIL PAPI-L	↑	LIB on 112.8 R-065	D4.0
----------------	---	--------------------------	------

STRAIGHT-IN LANDING RWY 07		CIRCLE-TO-LAND	
MDA(H) 1580' (1322')			

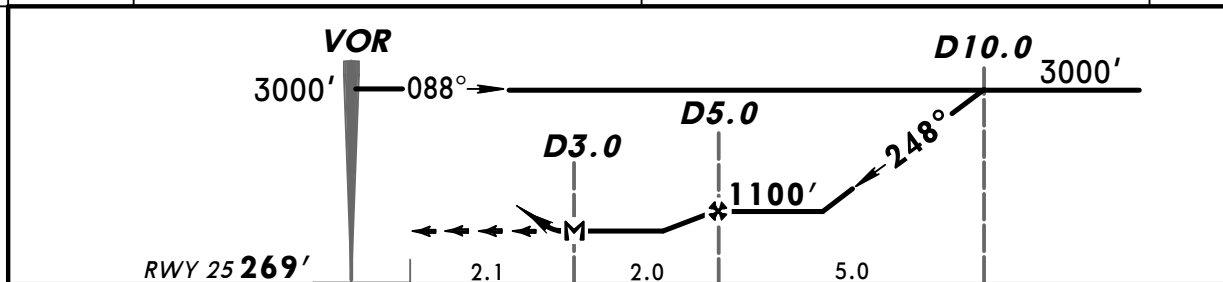
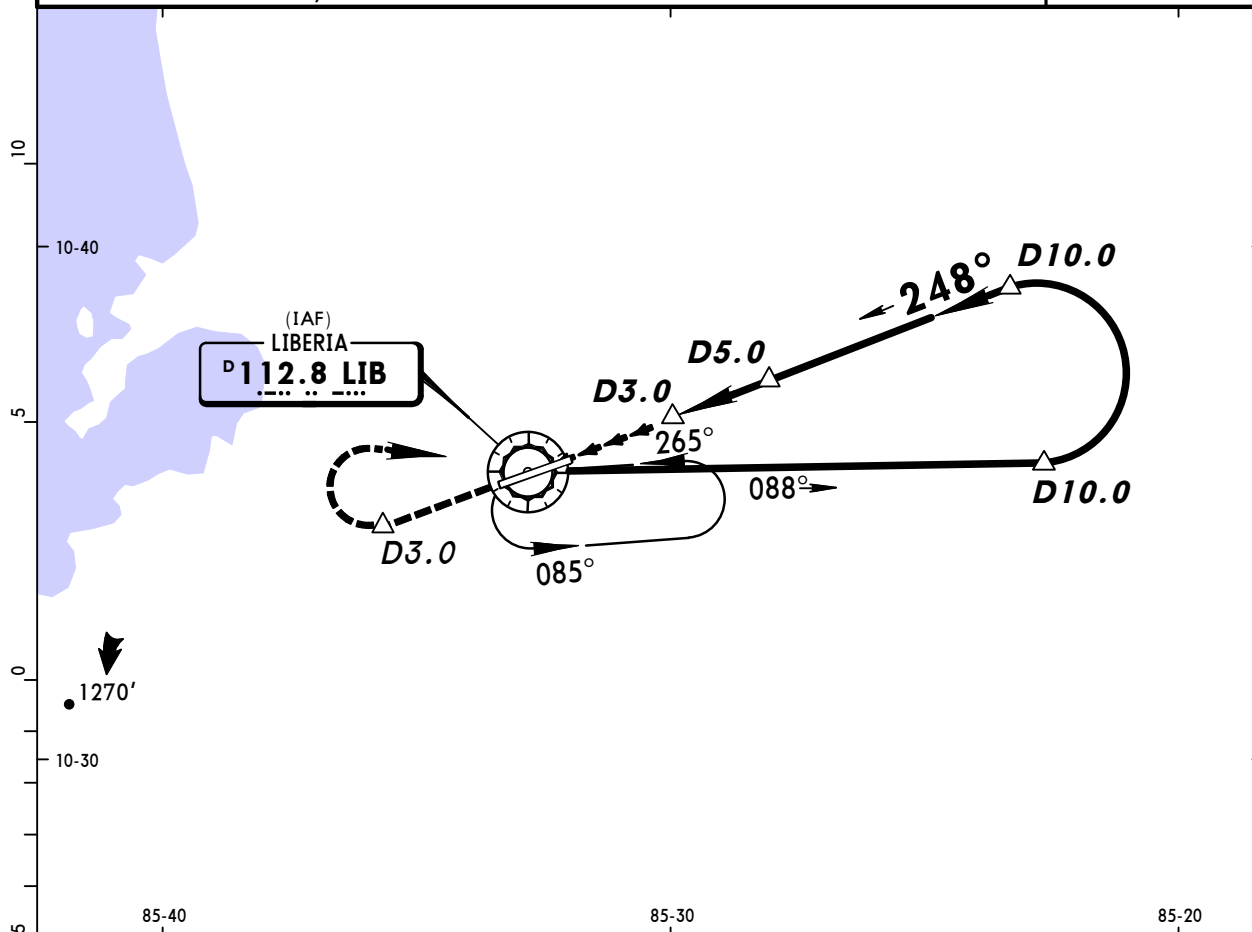
A	2.0 km	A	NA
B	2.4 km	B	
C	4.9 km	C	
D		D	

**MRLB/LIR**  
 DANIEL ODUBER QUIROS INTL

**JEPPESEN**  
 7 OCT 05 (13-3)

**LIBERIA, COSTA RICA**  
 VOR DME Rwy 25

*LIBERIA Approach		*LIBERIA Tower		*Ground		
119.8		118.8		121.7		
VOR LIB <b>112.8</b>	Final Apch Crs <b>248°</b>	Minimum Alt <b>D5.0</b> 1100' (831')	MDA(H) <b>870' (601')</b>	Apt Elev 269' Rwy 25 <b>269'</b>		
<b>MISSED APCH:</b> Maintain runway heading until 1000' and D3.0, turn RIGHT climbing to LIB VOR to initiate new approach or remain in the holding. Cross LIB VOR at 3000' or above.						
Alt Set: hPa		Rwy Elev: 10 hPa		Trans level: FL 200		
		Trans alt: 19000'		MSA LIB VOR		



Gnd speed-Kts	70	90	100	120	140	160	1000' and D3.0 ↑ RT LIB 112.8
MAP at D3.0							
D5.0 to MAP	2.0	1:43	1:20	1:12	1:00	0:51	

STRAIGHT-IN LANDING RWY 25		CIRCLE-TO-LAND	
MDA(H) <b>870' (601')</b>			

PANS OPS	A	1.9 km	A	NA
	B		B	
	C		C	
	D		D	