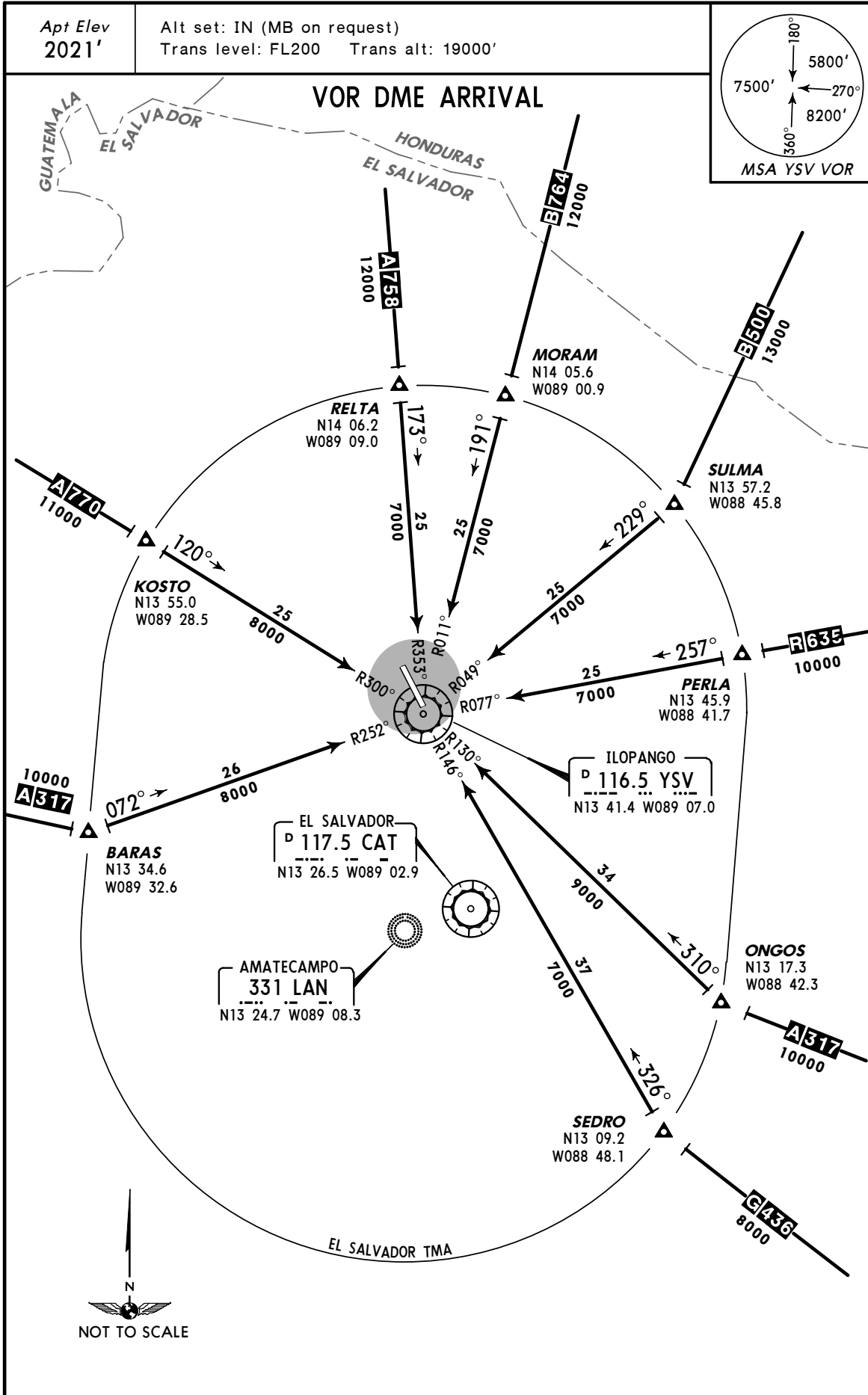


MSSS
 ILOPANGO INTL

JEPPESEN
 28 OCT 11 10-2

SAN SALVADOR,
 EL SALVADOR

STAR

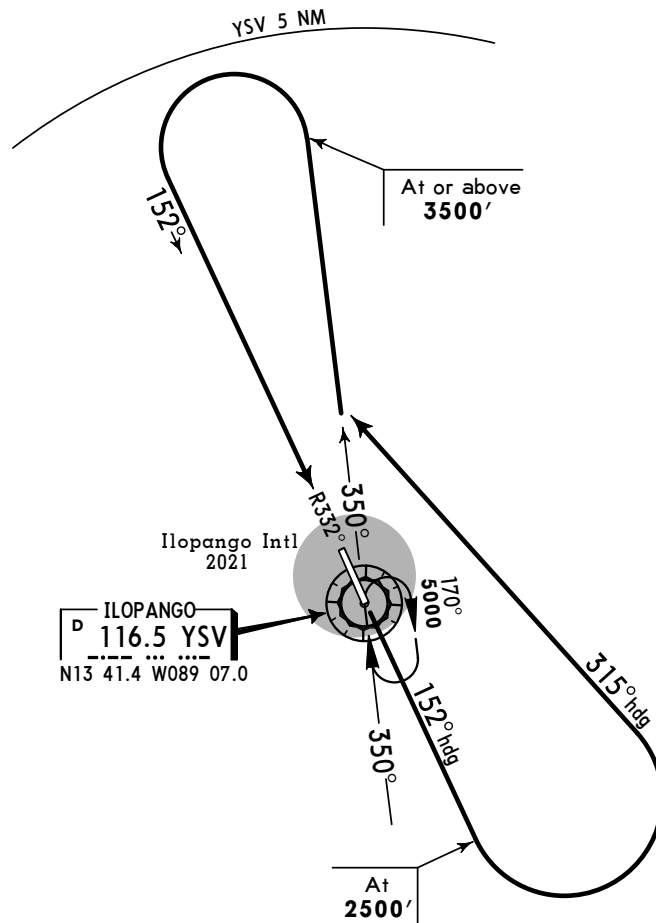


TRANS LEVEL: FL 200
TRANS ALT: 19000'

ASCENT RWY 15

TAKE-OFF

Rwy 15: Climb on heading 152°. At 2500' turn LEFT, continue ascent on a 315° heading. Intercept YSV R-350 outbound. Turn LEFT at or above 3500', intercept YSV R-332 to YSV VOR. Join the YSV VOR holding pattern at 5000' and follow instructions from ATC. Do not exceed 5 NM on the turn to intercept YSV R-332 to YSV VOR.



SID

JEPPESEN

1 FEB 02

10-3A

SAN SALVADOR, EL SALVADOR ILOPANGO INTL

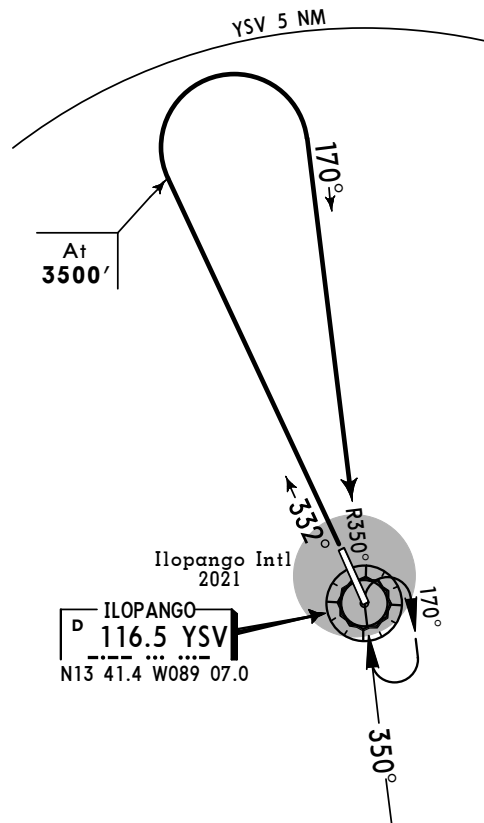
TRANS LEVEL: FL 200
TRANS ALT: 19000'

ASCENT RWY 33

Caution: Do not exceed the procedure or holding pattern limits. High terrain all quadrants outside the limits of protection.

TAKE-OFF

Rwy 33: Climb on heading 332°. At 3500' turn RIGHT, intercept YSV R-350 climbing to YSV VOR. Join the YSV VOR holding pattern in accordance with ATC. Do not exceed 5 NM on the turn to intercept YSV R-350 to YSV VOR.



SID

JEPPESEN

1 FEB 02

10-3B

SAN SALVADOR, EL SALVADOR
 ILOPANGO INTL

TRANS LEVEL: FL 200
 TRANS ALT: 19000'

ILOPANGO DEPARTURE
 [YSV]

TAKE-OFF

Rwy 15: Climb direct to 2500', turn LEFT to a heading of 270° to intercept YSV R-332, cross D8 at or above 4500', then
Rwy 33: Climb via YSV R-332, cross D8 at or above 4500', then

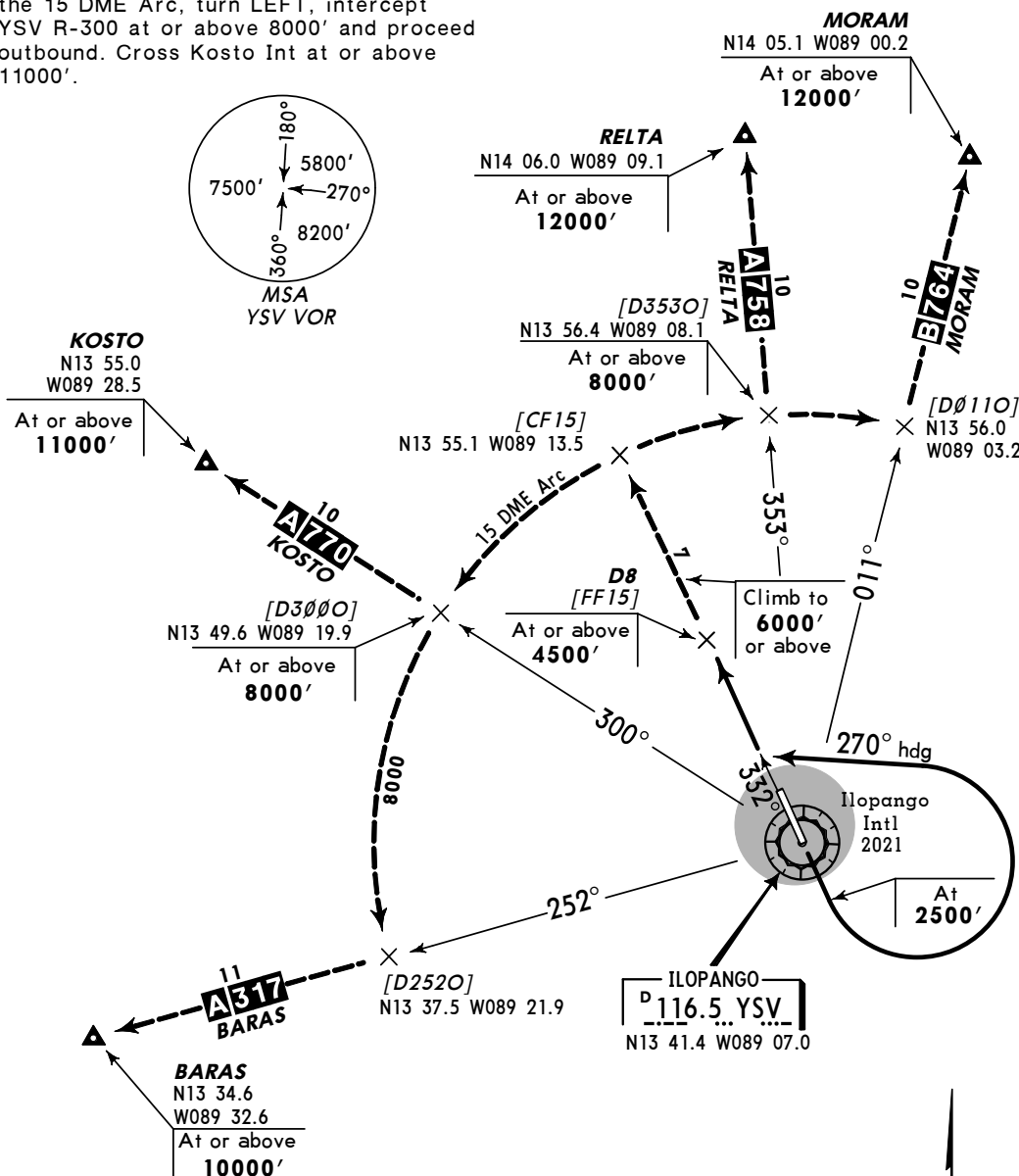
TRANSITIONS

BARAS: Continue climbing to 6000' or above on YSV R-332 until established on the 15 DME Arc, turn LEFT, cross YSV R-300 at or above 8000' and continue climbing on the 15 DME Arc to intercept and follow YSV R-252 outbound. Cross Baras Int at or above 10000'.

KOSTO: Continue climbing to 6000' or above on YSV R-332 until established on the 15 DME Arc, turn LEFT, intercept YSV R-300 at or above 8000' and proceed outbound. Cross Kosto Int at or above 11000'.

RELTA: Continue climbing to 6000' or above on YSV R-332 until established on the 15 DME Arc, turn RIGHT, intercept YSV R-353 at or above 8000'. Cross Relta Int at or above 12000'.

MORAM: Continue climbing to 6000' or above on YSV R-332 until established on the 15 DME Arc, turn RIGHT, cross YSV R-353 at or above 8000' and continue climbing on the 15 DME Arc to intercept and follow YSV R-011 outbound. Cross Moram Int at or above 12000'.



SID

JEPPESEN

1 FEB 02

10-3C

SAN SALVADOR, EL SALVADOR
ILOPANGO INTL

TRANS LEVEL: FL 200
 TRANS ALT: 19000'

LA PALMA DEPARTURE

This SID requires minimum climb gradients of:

Rwy	Gnd speed-Kts	75	100	150	200	250	300
15	to 5000' V/V (fpm)	438	583	875	1167	1458	1750
33	to 5000' V/V (fpm)	375	500	750	1000	1250	1500
Moram Transition 15, 33	5000' to 12000' V/V (fpm)	338	450	675	900	1125	1350
Perla Transition 15, 33	5000' to 10000' V/V (fpm)	275	367	550	733	917	1100
Relta Transition 15, 33	5000' to 12000' V/V (fpm)	288	383	575	767	958	1150

TAKE-OFF

Rwy 15: MAINTAIN runway heading until reaching 2500', turn LEFT to a 360° heading to intercept YSV R-045. **MAINTAIN** 5000' until D7 YSV. Then

Rwy 33: MAINTAIN runway heading until reaching 2500', turn RIGHT to a 120° heading to intercept YSV R-045. **MAINTAIN** 5000' until D7 YSV. Then

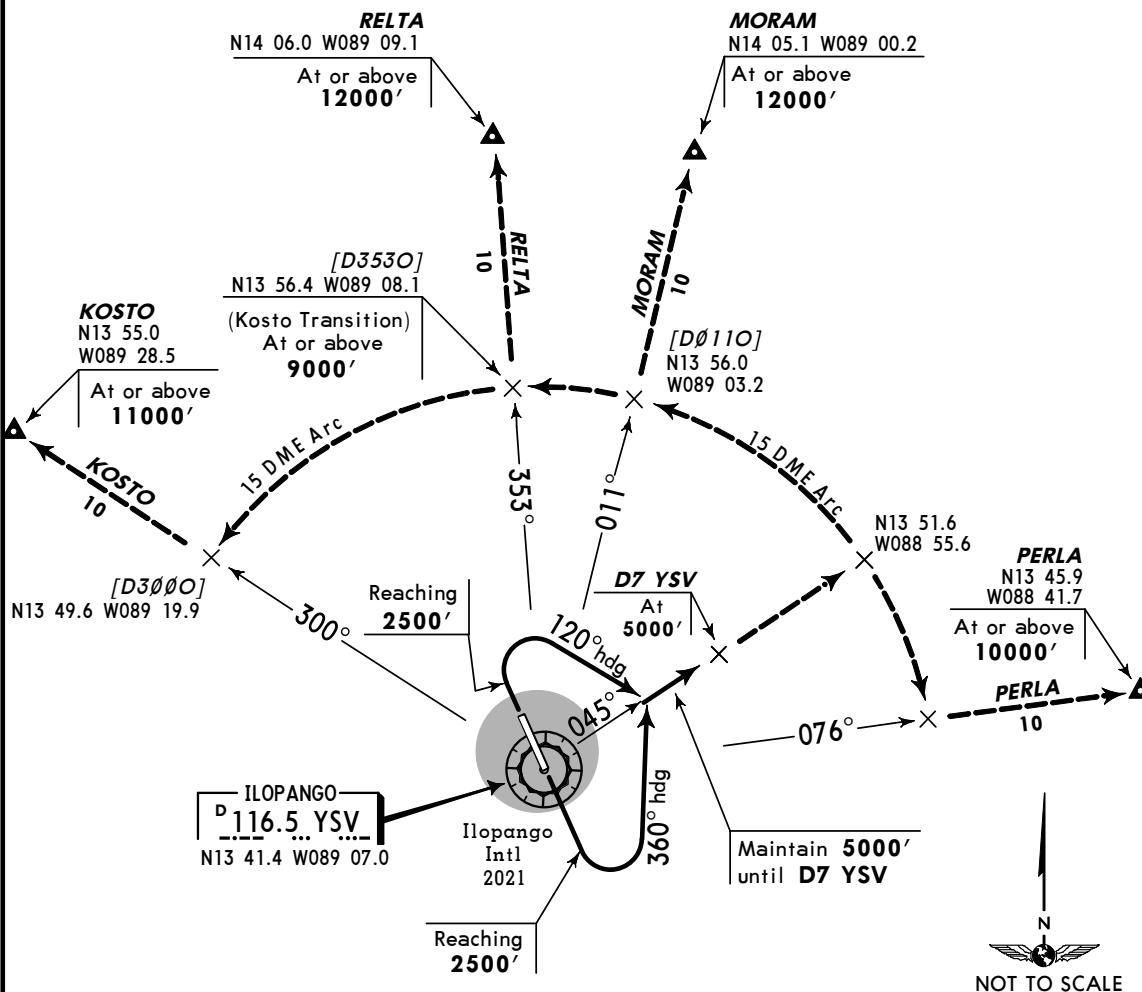
TRANSITIONS

KOSTO: Continue to climb on YSV R-045 to 15 DME fix, establish a 15 DME Arc to the LEFT. Cross YSV R-353 at or above 9000', continue climb on 15 DME Arc to intercept YSV R-300. Cross Kosto Int at or above 11000'.

MORAM: Continue to climb on YSV R-045 to 15 DME fix, establish a 15 DME Arc to the LEFT to intercept YSV R-011. Cross Moram Int at or above 12000'.

PERLA: Continue to climb on YSV R-045 to 15 DME fix, establish a 15 DME Arc to the RIGHT to intercept YSV R-076. Cross Perla Int at or above 10000'.

RELTA: Continue to climb on YSV R-045 to 15 DME fix, establish a 15 DME Arc to the LEFT to intercept YSV R-353. Cross Relta Int at or above 12000'.

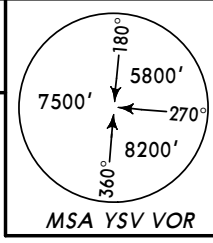


MSSS
 ILOPANGO INTL

JEPPESEN
 5 DEC 03 (10-3D)

SAN SALVADOR,
 EL SALVADOR
SID

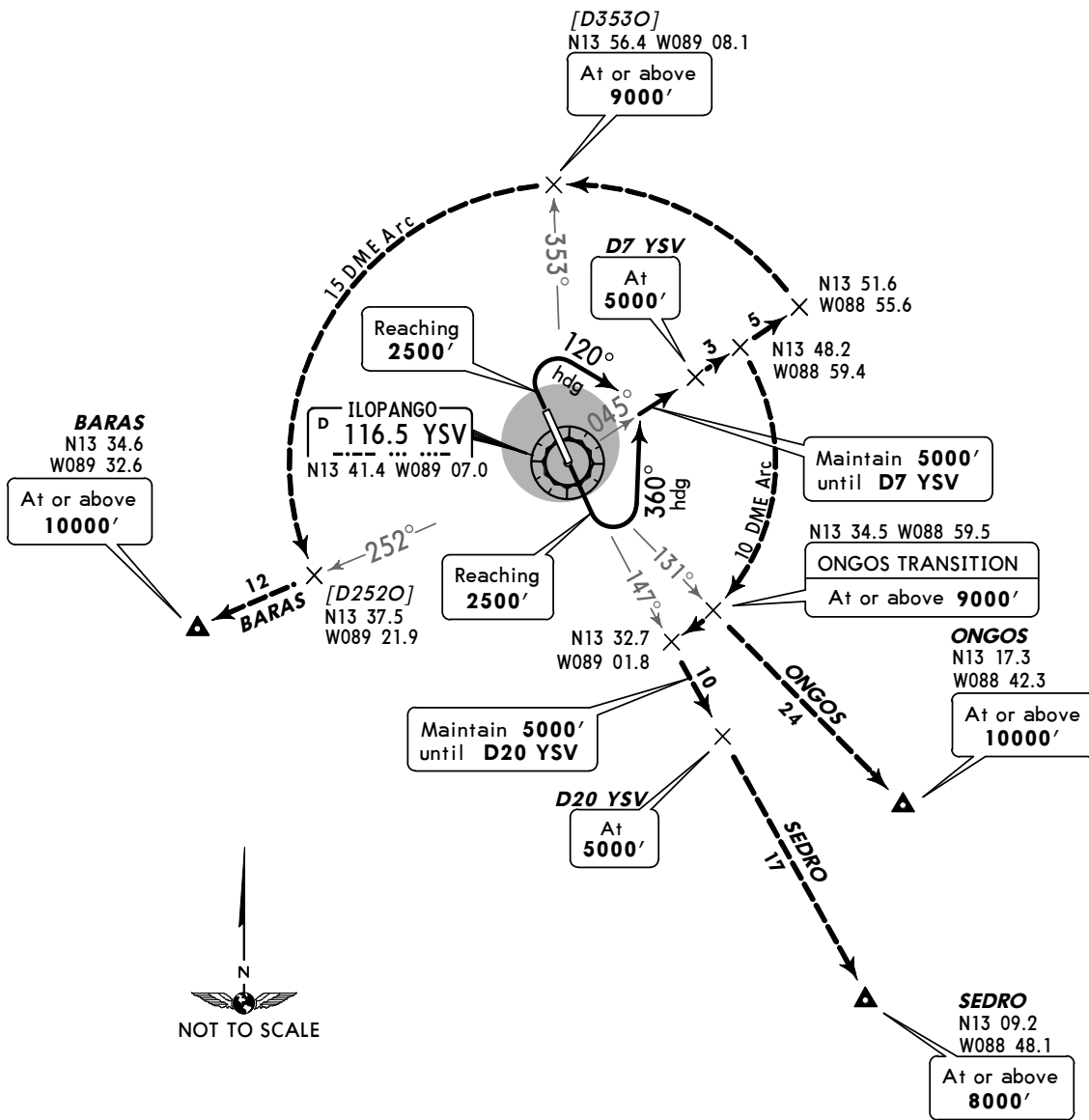
Apt Elev 2021'	Trans level: FL 200 Trans alt: 19000'
-------------------	--



LA PALMA DEPARTURE

This SID requires minimum climb gradients of:

Rwy	Gnd speed-KT	75	100	150	200	250	300
15	to 5000' V/V (fpm)	438	583	875	1167	1458	1750
33	to 5000' V/V (fpm)	375	500	750	1000	1250	1500



RWY	INITIAL CLIMB
15	MAINTAIN runway heading until 2500', turn LEFT to a 360° heading to intercept YSV R-045.
33	MAINTAIN runway heading until 2500', turn RIGHT to a 120° heading to intercept YSV R-045.

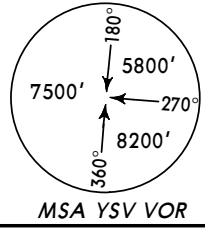
TRANSITIONS	
BARAS	Continue to climb on YSV R-045 to 15 DME fix, establish a 15 DME Arc to the LEFT. Cross YSV R-353, continue climb on 15 DME Arc to intercept YSV R-252 to BARAS.
ONGOS	Continue to climb on YSV R-045 to 10 DME fix, establish a 10 DME Arc to the RIGHT to intercept YSV R-131 to ONGOS.
SEDRO	Continue to climb on YSV R-045 to 10 DME fix, establish a 10 DME Arc to the RIGHT to intercept YSV R-147 to SEDRO.

MSSS
 ILOPANGO INTL

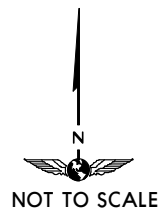
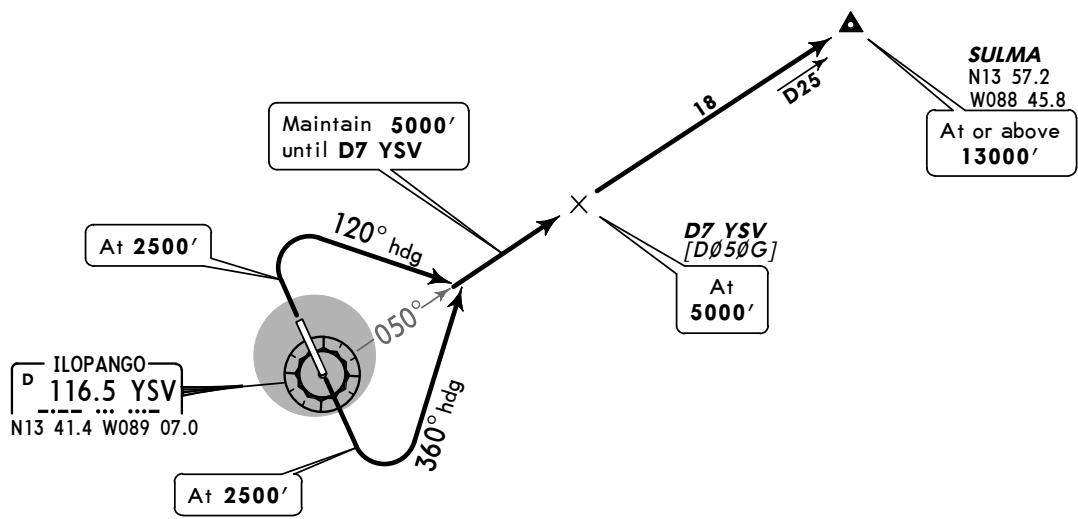
JEPPESEN
 5 DEC 03 (10-3E)

SAN SALVADOR,
 EL SALVADOR
SID

Apt Elev 2021'	Trans level: FL 200 Trans alt: 19000'
-------------------	--



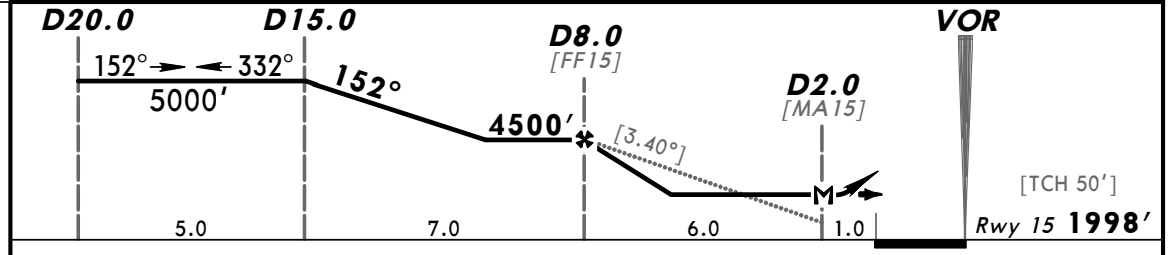
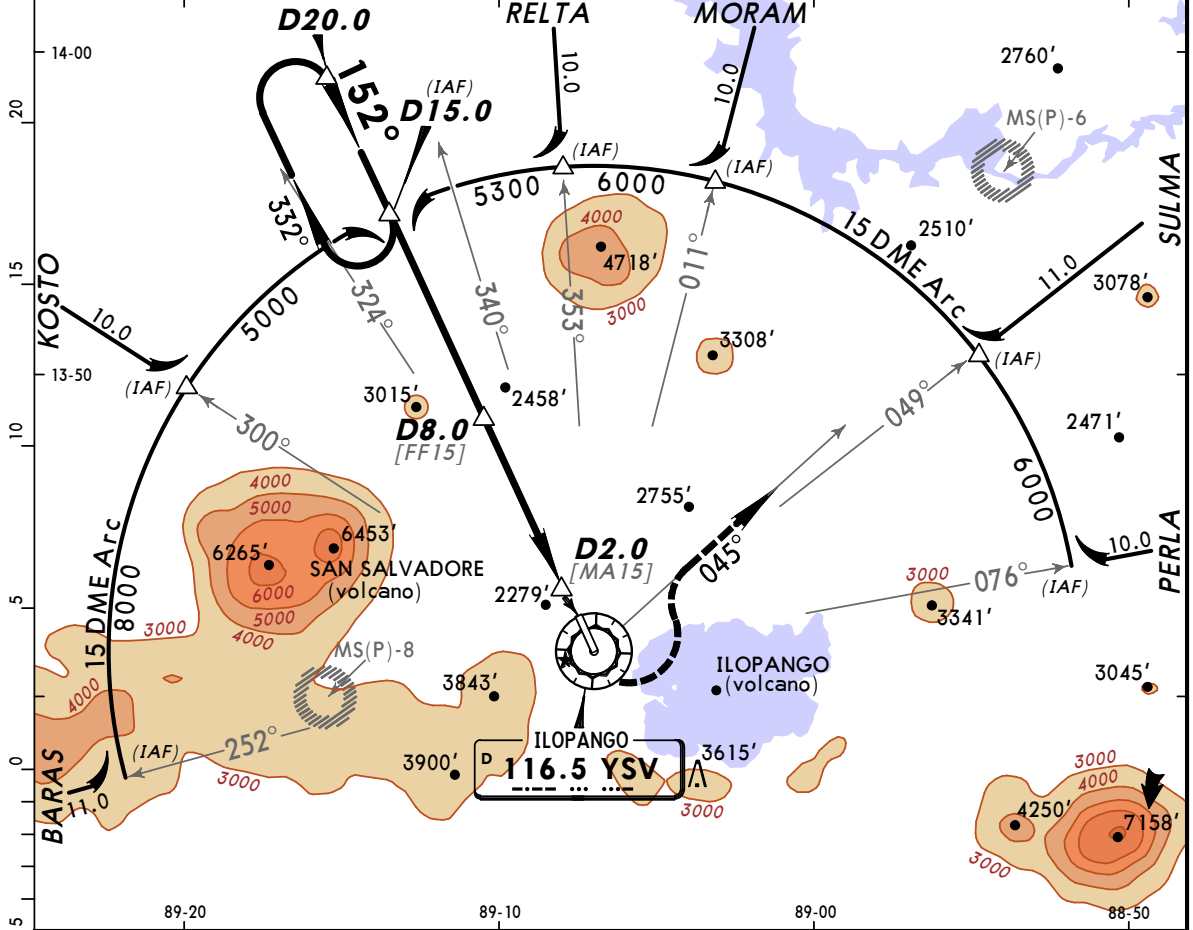
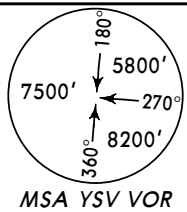
SULMA DEPARTURE
 [SULMA]



RWY	INITIAL CLIMB
15	MAINTAIN runway heading until 2500', turn LEFT to a 360° heading to intercept YSV R-050.
33	MAINTAIN runway heading until 2500', turn RIGHT to a 120° heading to intercept YSV R-050.

MSSS ILOPANGO INTL 28 OCT 11 (13-1) **JEPPESEN SAN SALVADOR, EL SALVADOR**
VOR DME Rwy 15

*ILOPANGO Approach 119.5		*ILOPANGO Tower 118.3		*Ground 121.9	
VOR YSV 116.5	Final Apch Crs 152°	Minimum Alt D8.0 4500' (2502')	MDA(H) 2700' (702')	Apt Elev 2021' Rwy 15 1998'	
MISSED APCH: Cross YSV VOR at or above 2800', turn LEFT to intercept YSV VOR R-045 outbound, climbing to 6000'. Request instructions from ATC.					
Alt Set: IN (MB on req)		Trans level: FL 200		Trans alt: 19000'	



Gnd speed-Kts	70	90	100	120	140	160	PAPI-L	↑ at or above to 2800'	← LT	YSV 116.5 R-045
Descent angle [3.40°]	421	541	602	722	842	963				
MAP at D2.0										

STRAIGHT-IN LANDING RWY15		CEILING REQUIRED		CIRCLE-TO-LAND	
MDA(H) 2700' (702')					
	CEILING-VISIBILITY	Max Kts	MDA(H)	CEIL-VIS	
A	700' - 1600m	90	2700' (679')	700' - 1600m	
B	700' - 3200m	120	2700' (679')	700' - 3200m	
C	700' - 3600m	140	2700' (679')	1300' - 4800m	
D		165	3260' (1239')		

MSSS

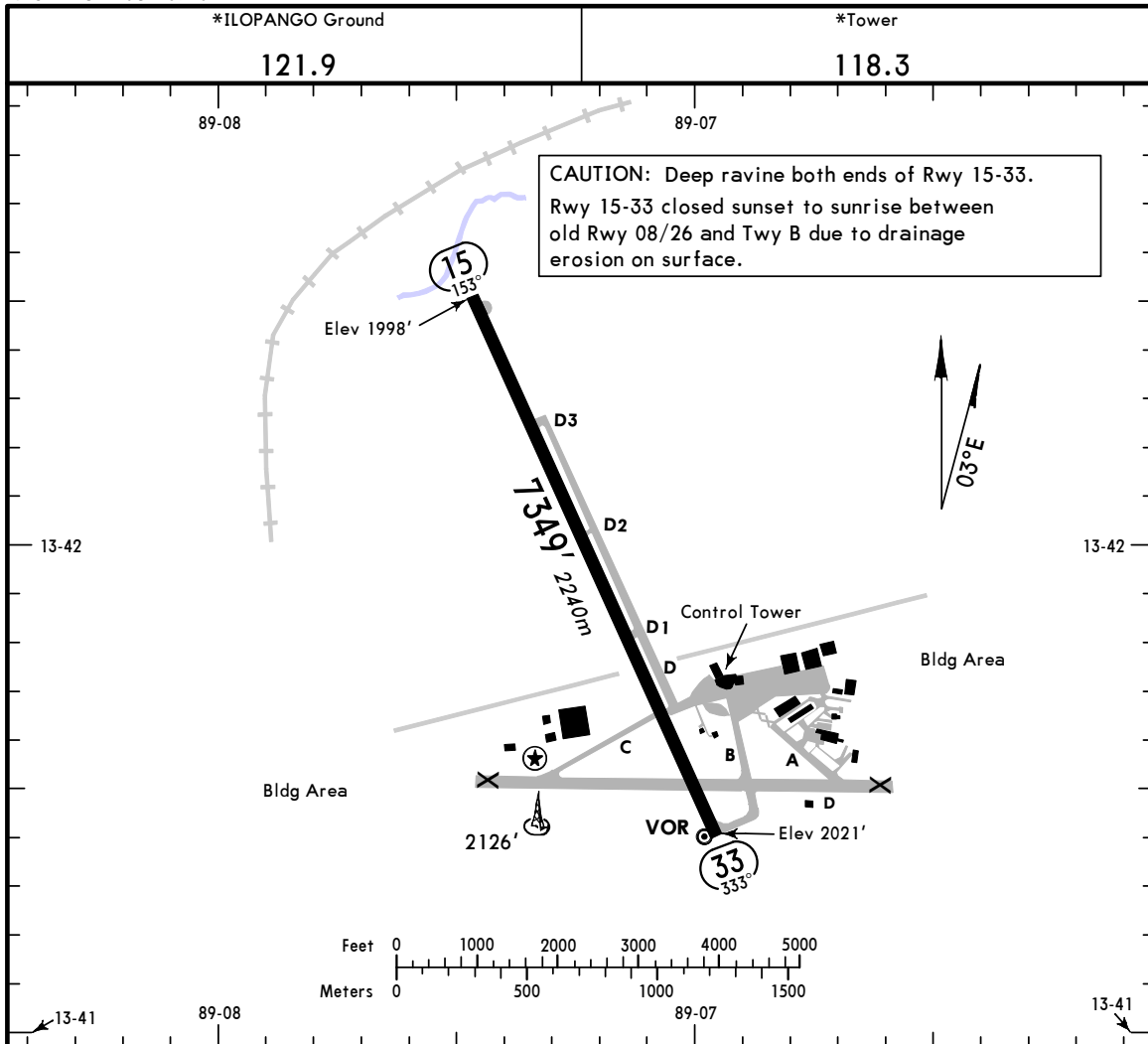
Apt Elev **2021'**
 N13 41.8 W089 07.0



SAN SALVADOR, EL SALVADOR

28 OCT 11 (13-1)

ILOPANGO INTL



ADDITIONAL RUNWAY INFORMATION

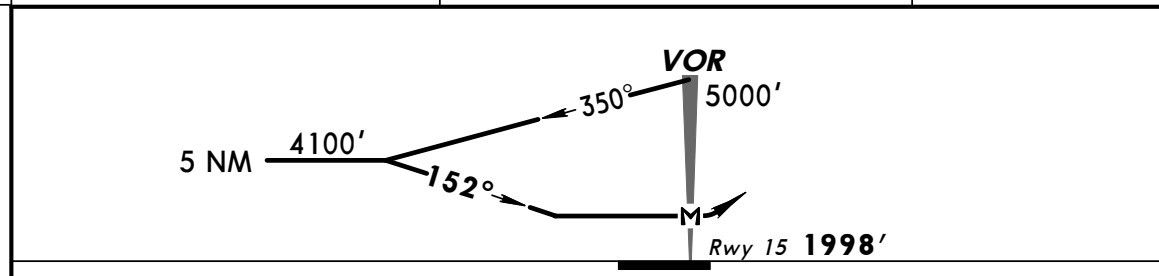
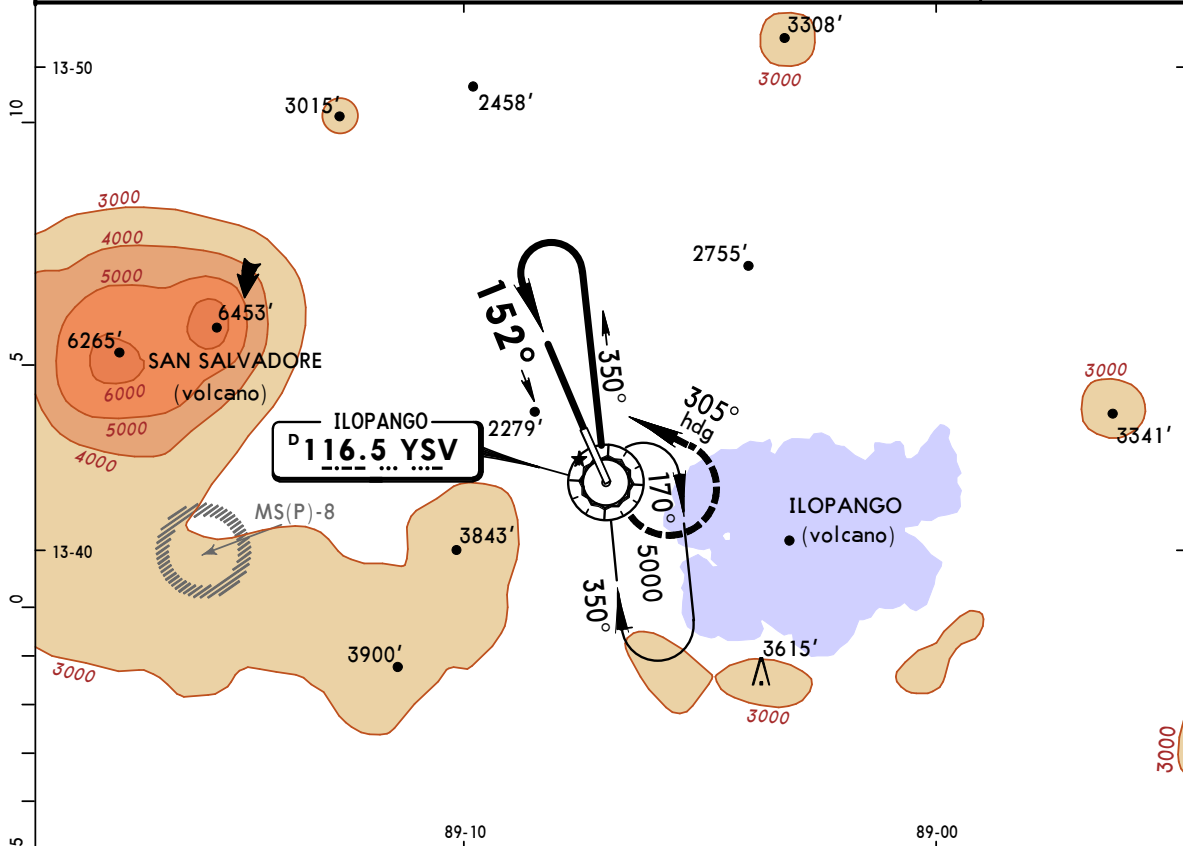
RWY	HIRL PAPI-L (angle 3.10°)	USABLE LENGTHS		TAKE-OFF	WIDTH
		LANDING BEYOND Threshold	Glide Slope		
15	HIRL PAPI-L (angle 3.10°)				148'
33	HIRL				45m

TAKE-OFF

	AIR CARRIER (JAA)		AIR CARRIER (FAR 121)	
	LVP must be in Force All Rwys RCLM (Day only) or RL	All Rwys RCLM (Day only) or RL	All Rwys	Adequate Vis Ref
A	250m	400m	2 Eng	400m
B	300m		3 & 4 Eng	
C	400m			
D	400m			

MSSS ILOPANGO INTL 28 OCT 11 **(13-2)** **JEPPESEN SAN SALVADOR, EL SALVADOR**
CAT A VOR Rwy 15

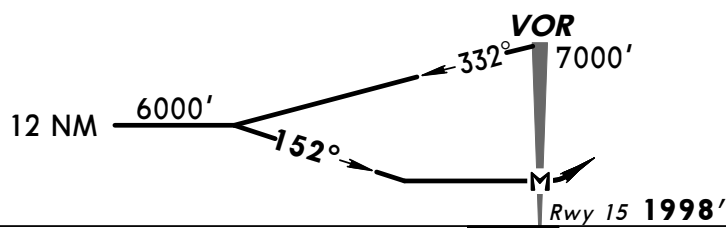
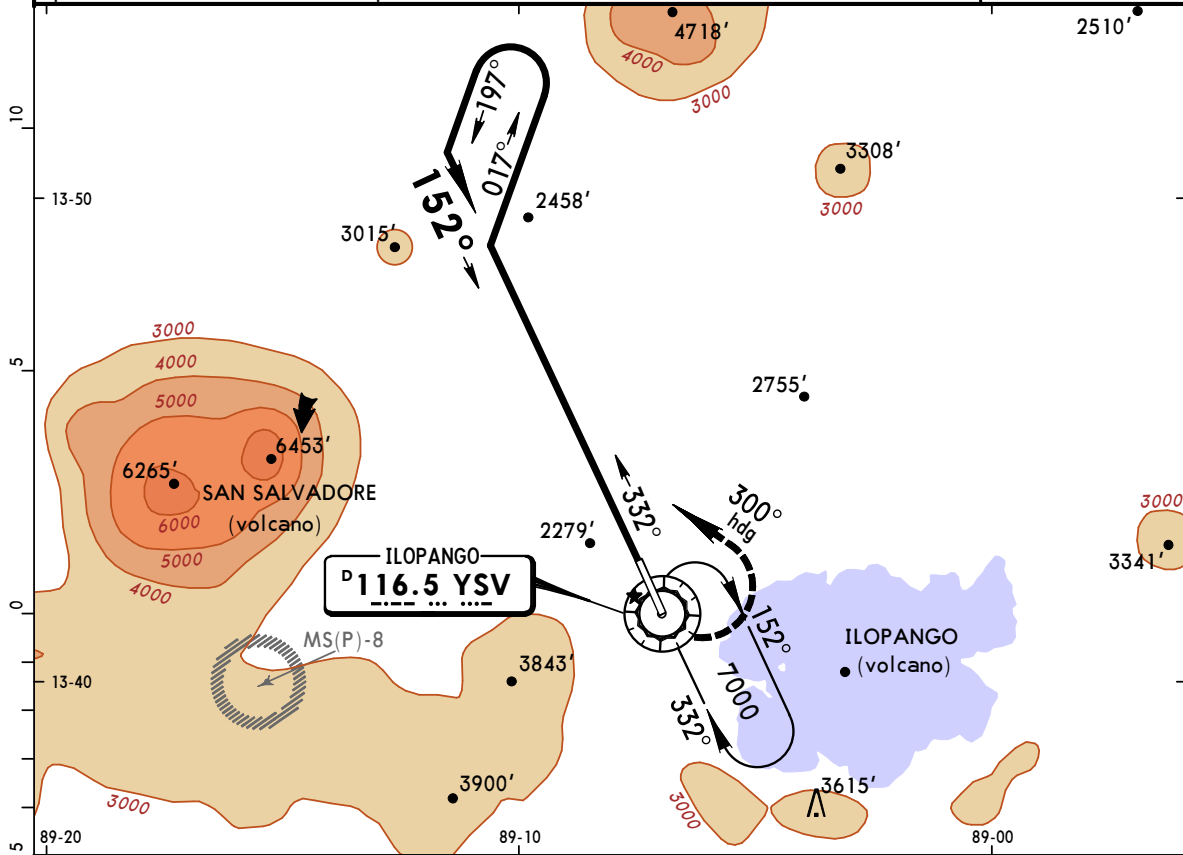
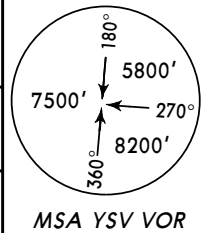
BRIEFING STRIP™	*ILOPANGO Approach		*ILOPANGO Tower		*Ground
	119.5		118.3		121.9
	VOR YSV 116.5	Final Apch Crs 152°	No FAF	MDA(H) 2800' (802')	Apt Elev 2021' Rwy 15 1998'
MISSED APCH: Climbing LEFT turn to heading 305° to intercept YSV VOR R-350 outbound to 4100', then return to YSV VOR at 5000' and hold, or follow instructions from ATC.					
Alt Set: IN (MB on req) Trans level: FL 200 Trans alt: 19000' 1. CAUTION: Do not exceed the procedure or holding pattern limits. High terrain all quadrants outside the limits of protection.					
MSA YSV VOR					



MAP at VOR				PAPI-L	4100' to 305° hdg	YSV 116.5 R-350
STRAIGHT-IN LANDING RWY 15				CEILING REQUIRED		CIRCLE-TO-LAND
MDA(H) 2800' (802')				Max Kts	MDA(H)	CEIL-VIS
A	CEILING-VISIBILITY 800' - 1600m			90	2800' (779')	800' - 1600m
B	NOT APPLICABLE			B	NOT APPLICABLE	
C	NOT APPLICABLE			C	NOT APPLICABLE	
D	NOT APPLICABLE			D	NOT APPLICABLE	

MSSS SAN SALVADOR, EL SALVADOR
ILOPANGO INTL 28 OCT 11 (13-3) CAT B, C & D VOR Rwy 15

BRIEFING STRIP™	*ILOPANGO Approach		*ILOPANGO Tower		*Ground
	119.5		118.3		121.9
	VOR YSV 116.5	Final Apch Crs 152°	No FAF	MDA(H) 3320' (1322')	Apt Elev 2021' Rwy 15 1998'
	MISSED APCH: Climbing LEFT turn to heading 300° to intercept YSV VOR R-332 outbound to 6000', then return to YSV VOR at 7000' and follow APP instructions.				
Alt Set: IN (MB on req)		Trans level: FL 200		Trans alt: 19000'	
1. CAUTION: Do not exceed the procedure holding pattern limits. High terrain all quadrants outside the limits of protection.					



MAP at VOR		PAPI-L		6000'	300°	YSV 116.5
				LT	to	R-332
STRAIGHT-IN LANDING RWY15			CEILING REQUIRED	CIRCLE-TO-LAND		
MDA(H) 3320' (1322')			Max Kts	MDA(H)	CEIL-VIS	
A	CEILING-VISIBILITY NA		A	NA		
B			120			
C	1300'-5000m		140	3320' (1299')	1300'-5000m	
D			165			