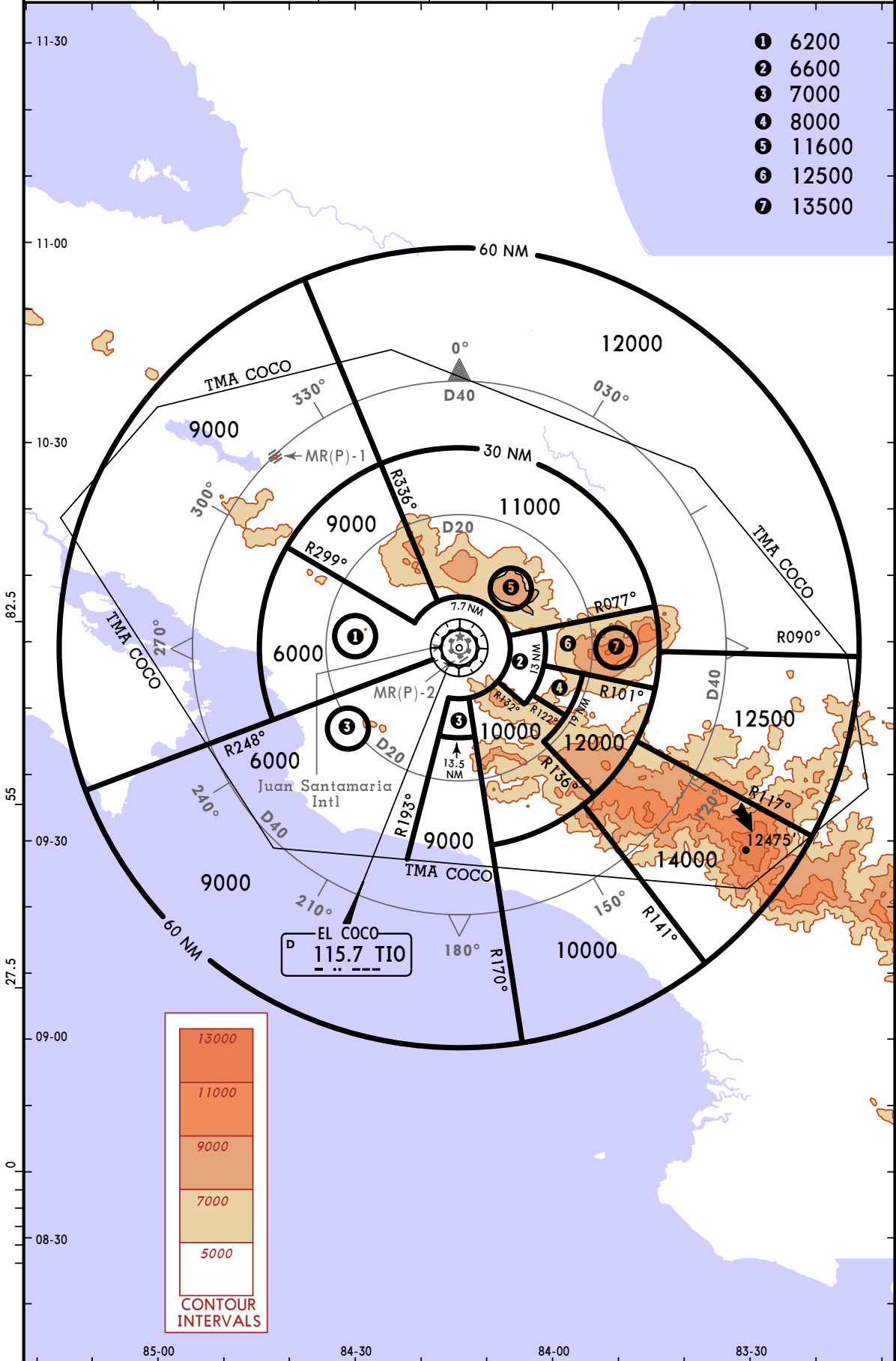


MROC/SJO
JUAN SANTAMARIA INTL

JEPPESEN
 4 JAN 13 **(10-1R)**

SAN JOSE, COSTA RICA
RADAR MINIMUM ALTITUDES

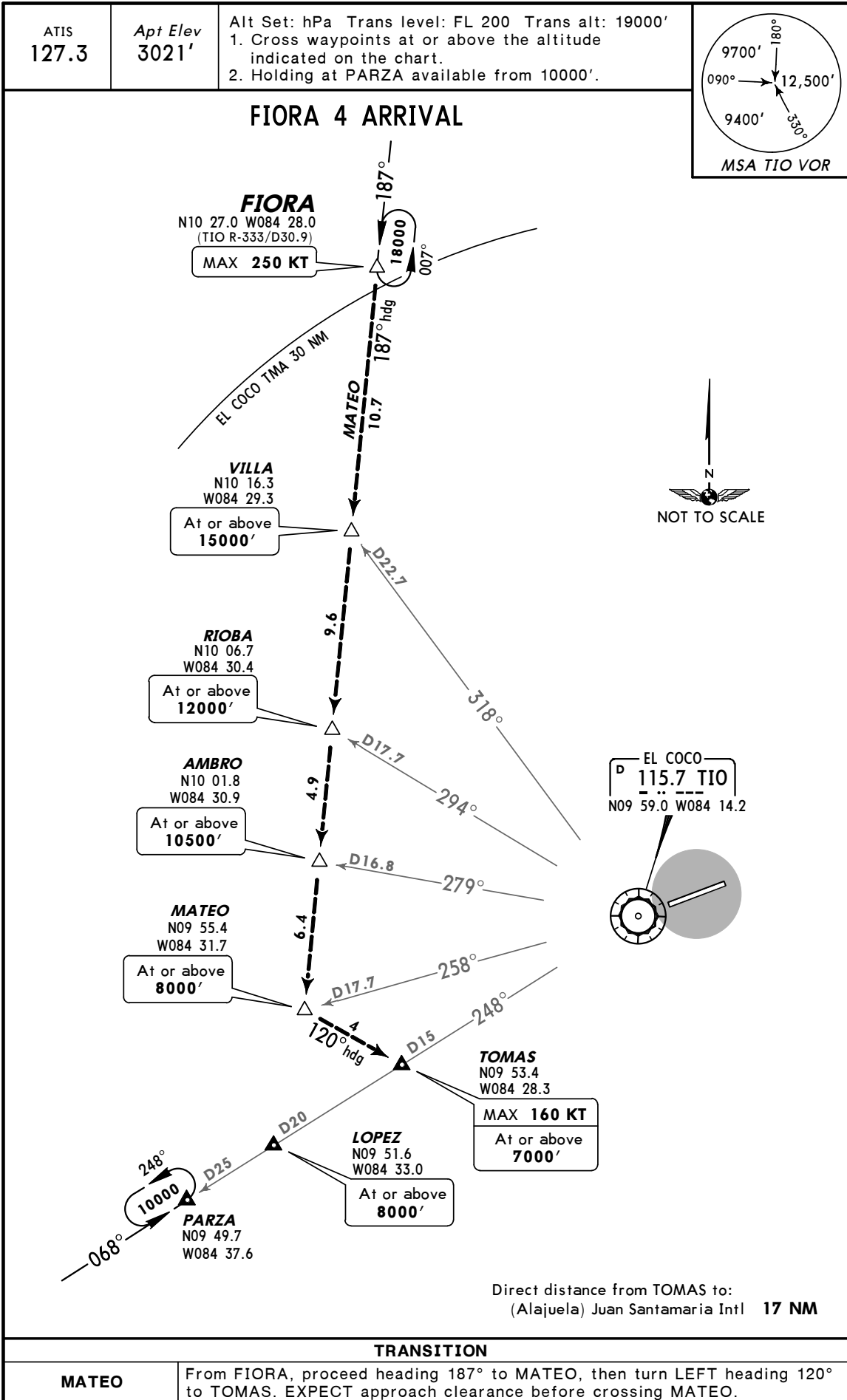
COCO Center (R) 119.6	*COCO Approach (R) 120.5	Apt Elev 3021'	Alt Set: hPa (IN on req) Trans level: FL 200 Trans alt: 19000'
---------------------------------	------------------------------------	--------------------------	--



MROC/SJO
 (ALAJUELA) JUAN
 SANTAMARIA INTL

JEPPESEN
 12 NOV 10 **(10-2)**

SAN JOSE, COSTA RICA
STAR



MROC/SJO
 (ALAJUELA) JUAN
 SANTAMARIA INTL

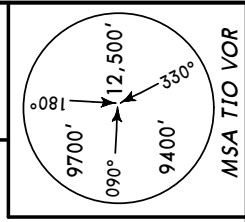
JEPPESEN
 12 NOV 10 **(10-2A)**

SAN JOSE, COSTA RICA
STAR

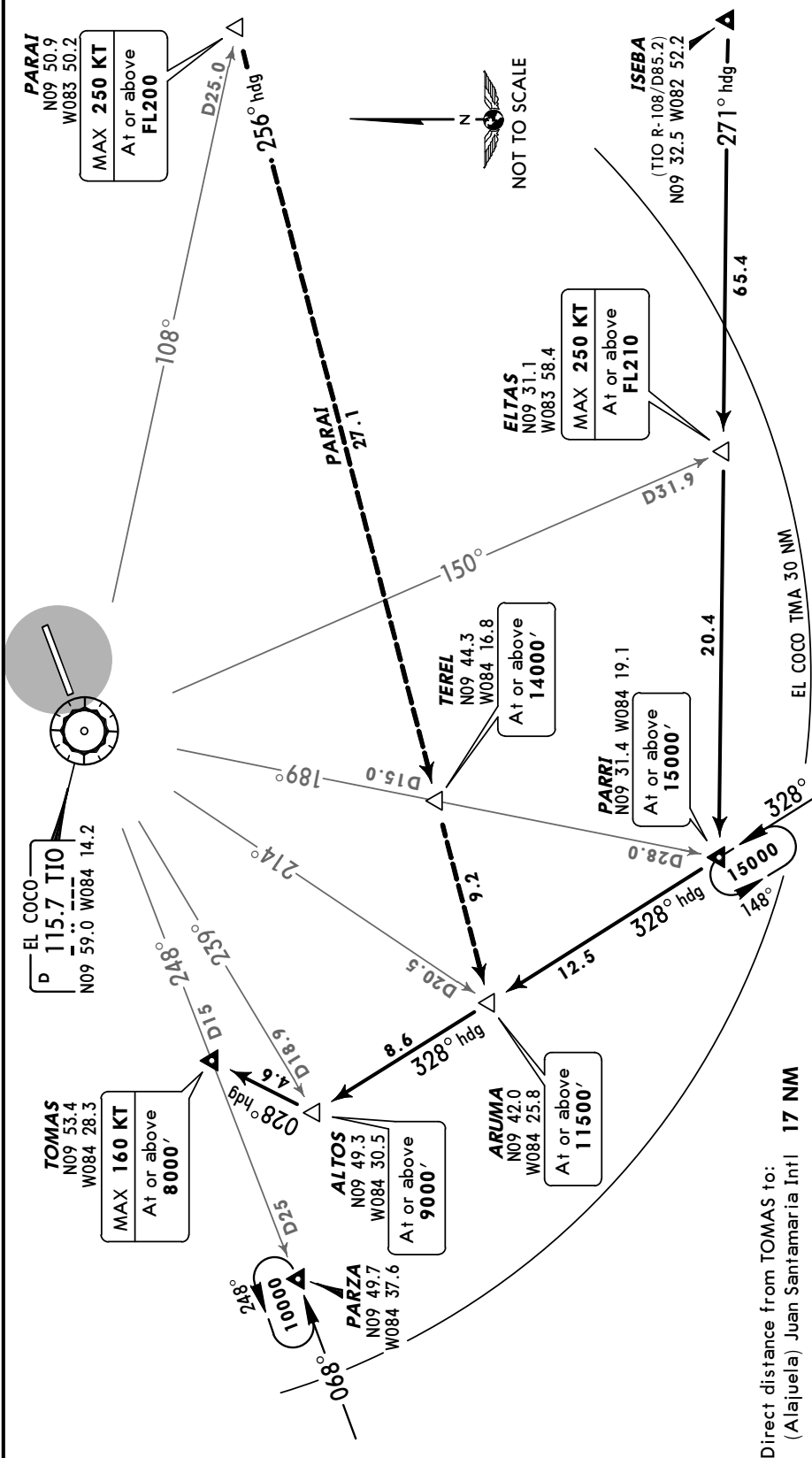
ATIS
127.3

Apt Elev
3021'

Alt Set: hPa Trans level: FL 200 Trans alt: 19000'
 1. PARAI Transition RADAR required.
 2. Cross waypoints at or above the altitude indicated on the chart.
 3. Holding at PARZA available from 10000'.



PARRITA 4 ARRIVAL



TRANSITION	
PARAI	Proceed heading 256° to ARUMA, then turn RIGHT heading 328° to ALTOS. Then turn RIGHT heading 028° to TOMAS. EXPECT approach clearance before ALTOS.
FROM ISEBA	Proceed heading 271° to PARRI, then turn RIGHT heading 328° to ALTOS.
FROM PARRI	Proceed heading 328° to ARUMA, MAINTAIN heading 328° to ALTOS.
LANDING	
	At ALTOS turn RIGHT heading 028° to TOMAS. EXPECT approach clearance before ALTOS.

MROC/SJO
 (ALAJUELA) JUAN
 SANTAMARIA INTL

JEPPESEN

SAN JOSE, COSTA RICA

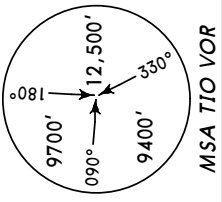
16 OCT 09

10-2B

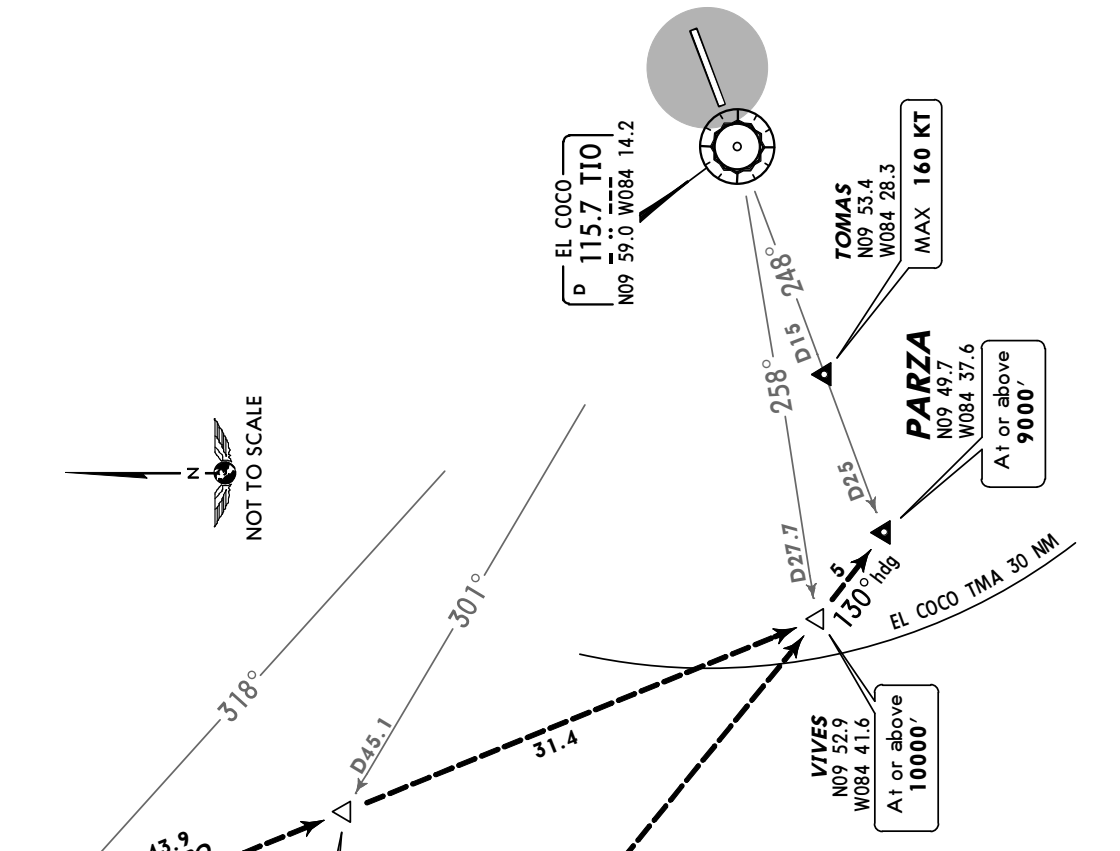
Eff 22 Oct

STAR

ATIS 127.3	Apt Elev 3021'	Alt Set: hPa Trans level: FL 200 Trans alt: 19000'
----------------------	--------------------------	--



PARZA 3 ARRIVAL



Direct distance from PARZA to:
 (Alajuela) Juan Santamaria Intl 27 NM

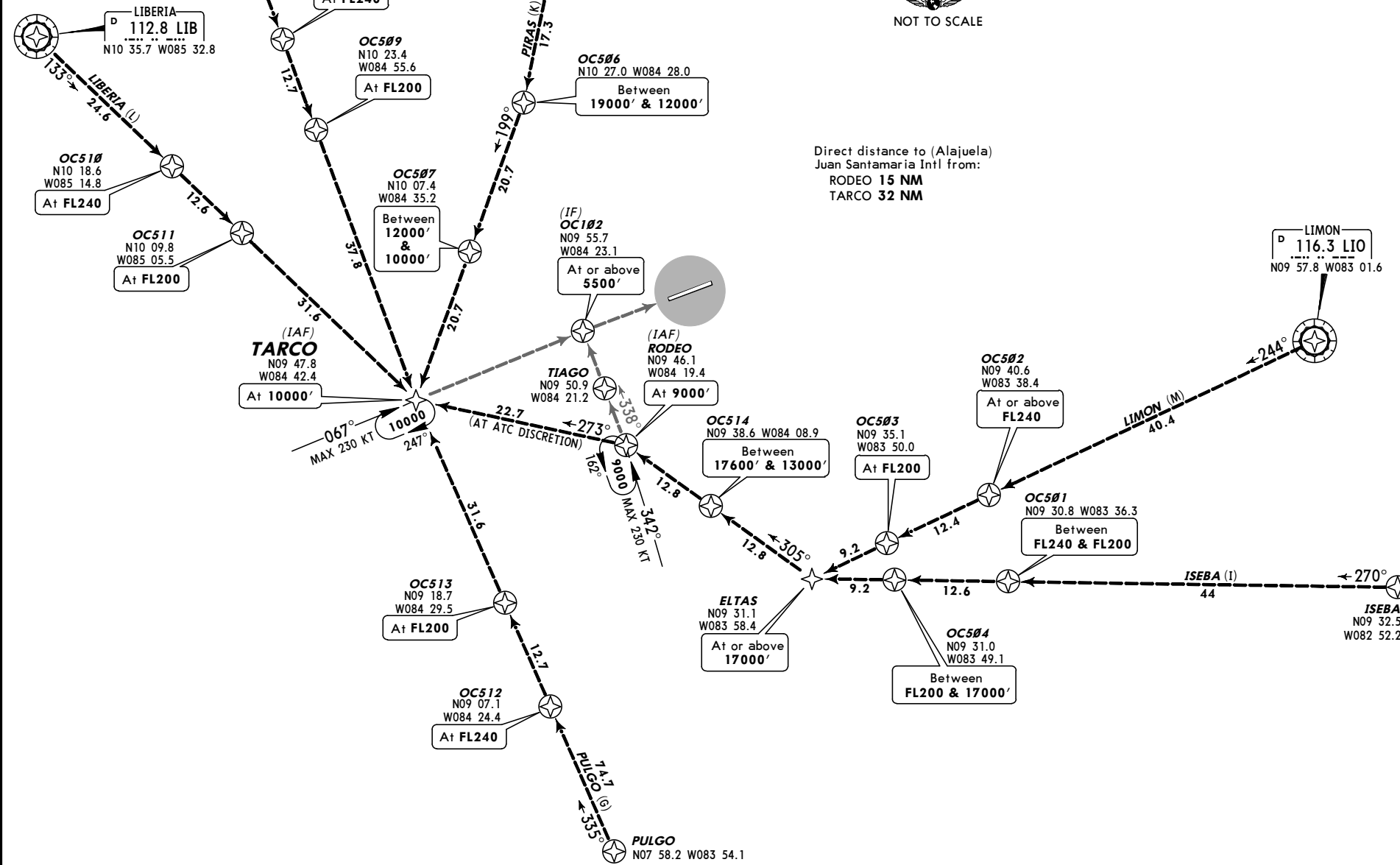
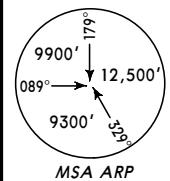
TRANSITIONS	
LIBERIA	From LIB proceed heading 131° to EDERO, then continue heading 130° to PARZA.
ULAPO	From ULAPO proceed heading 158° to VIVES, then continue heading 130° to PARZA.
LANDING	
EXPECT approach clearance before VIVES.	

MROC/SJO
 (ALAJUELA) JUAN
 SANTAMARIA INTL

ATIS **127.3** Apt Elev **3021'** Alt Set: hPa Trans level: FL200 Trans alt: 19000'

1. **RADAR required.**
2. Altitude restrictions due to SID-STAR segregation.

TARCO 1 [TARCO1]
RNAV (GNSS) ARRIVAL
 (RWY 07)

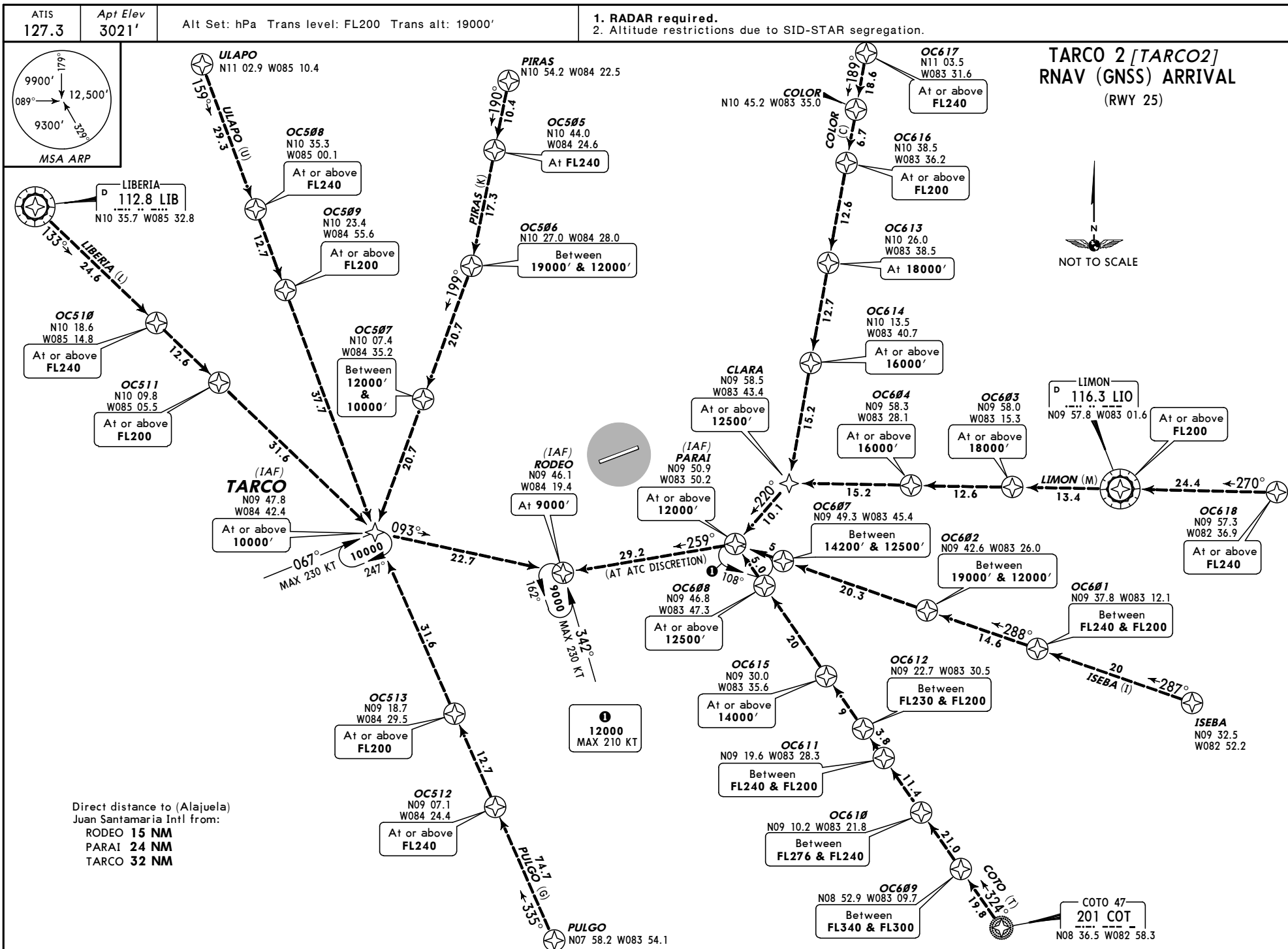


CHANGES: New procedure at this airport.

MROC/SJO
 (ALAJUELA) JUAN
 SANTAMARIA INTL

JEPPESEN
 21 DEC 12 10-2D

SAN JOSE, COSTA RICA
RNAV STAR

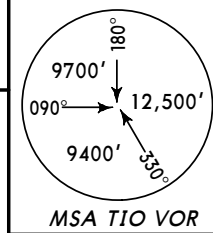


MROC/SJO
 (ALAJUELA) JUAN
 SANTAMARIA INTL

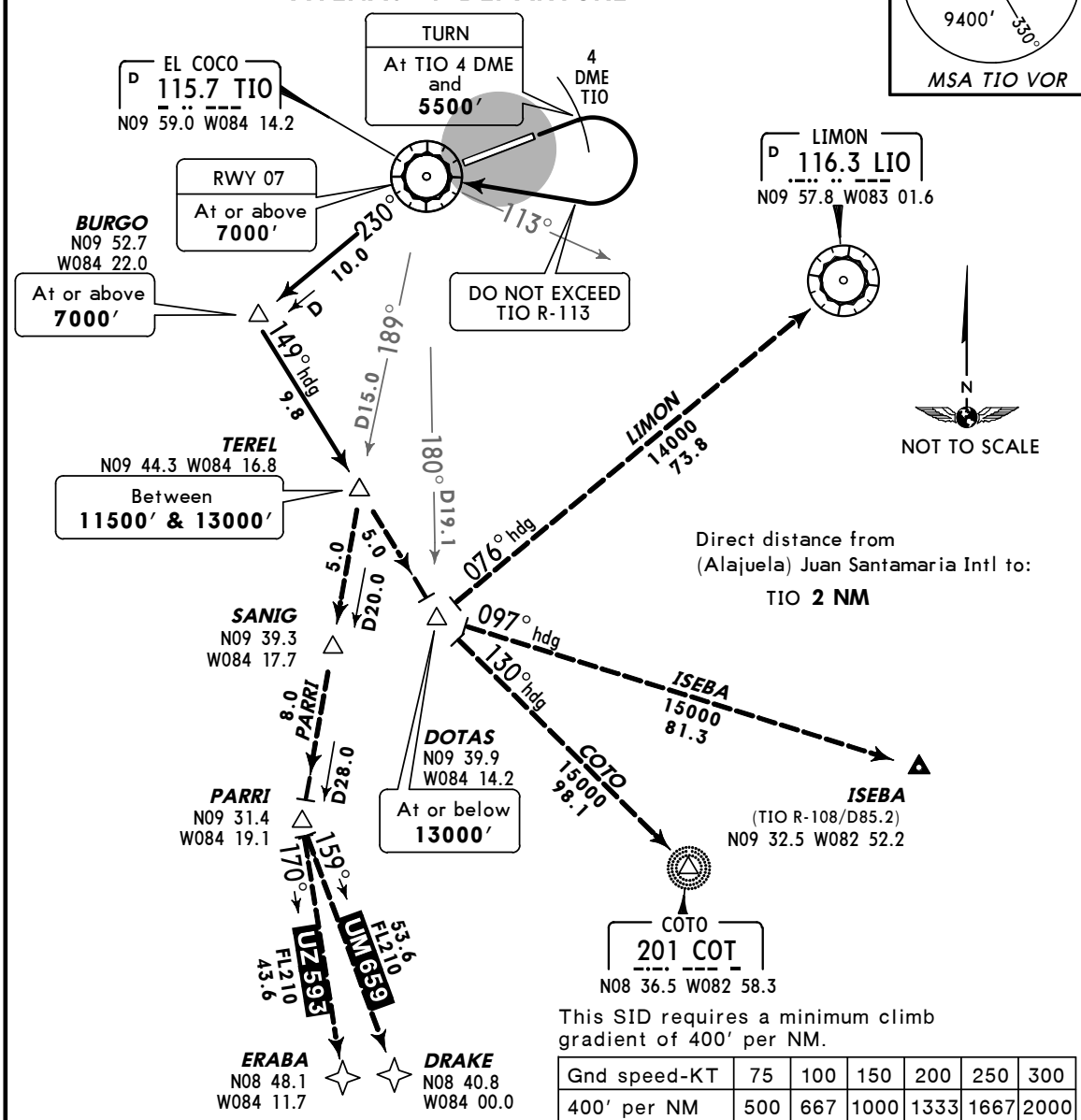
JEPPESEN
 12 NOV 10 **10-3**

SAN JOSE, COSTA RICA
SID

*COCO Departure (R) 120.5	Apt Elev 3021'	Trans level: FL 200 Trans alt: 19000'
--	--------------------------	--



ATENAS 4 DEPARTURE



RWY	INITIAL CLIMB
07	MAINTAIN runway heading with the maximum climb gradient possible to TIO 4 DME and 5500', then climbing RIGHT turn to TIO without exceeding TIO R-113. Continue with departure procedure.
25	Direct to TIO. Continue with departure procedure.

ROUTING
 Climb on TIO R-230 to BURGO, then turn LEFT heading 149° to TEREL and continue on the assigned transition.

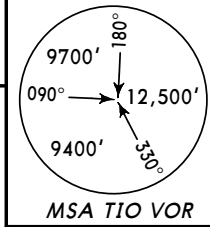
TRANSITIONS	
COTO (A/UA-502)	Over TEREL continue on heading 149° to DOTAS, then turn LEFT heading 130° to COT.
ISEBA (G/UG-440)	Over TEREL continue on heading 149° to DOTAS, then turn LEFT heading 096° to ISEBA.
LIMON (B/UB-690)	Over TEREL continue on heading 149° to DOTAS, then turn LEFT heading 076° to LIO.
PARRI (B/UB-767)	Over TEREL turn RIGHT on TIO R-189 to PARRI. UM-659 (RNAV) : Over PARRI continue track 159° to DRAKE. UZ-593 (RNAV) : Over PARRI continue track 170° to ERABA.

MROC/SJO
 (ALAJUELA) JUAN
 SANTAMARIA INTL

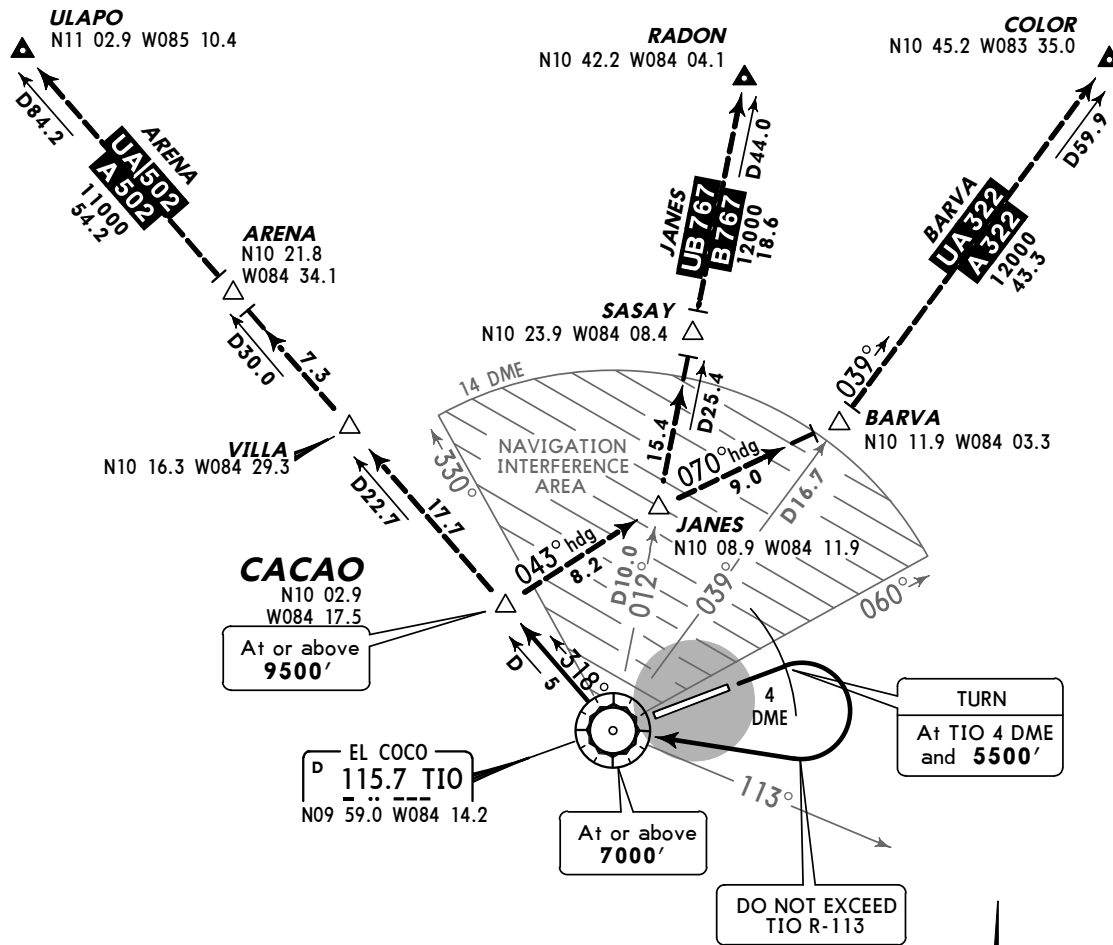
JEPPESEN
 12 NOV 10 **(10-3A)**

SAN JOSE, COSTA RICA
SID

*COCO Departure (R) 120.5	Apt Elev 3021'	Trans level: FL200 Trans alt: 19000'
--	--------------------------	--------------------------------------



CACAO 4 DEPARTURE
 (RWY 07)



Direct distance from (Alajuela) Juan Santamaria Intl to:
 TIO **2 NM**

This SID requires a minimum climb gradient of
 500' per NM.

Gnd speed-KT	75	100	150	200	250	300
500' per NM	625	833	1250	1667	2083	2500

INITIAL CLIMB

MAINTAIN runway heading with the maximum climb gradient possible to TIO 4 DME and **5500'** then **RIGHT** turn to TIO without exceeding TIO R-113. Continue with departure procedure.

ROUTING

Depart TIO on TIO R-318 to CACAO, then continue on ATC assigned transition.

TRANSITIONS

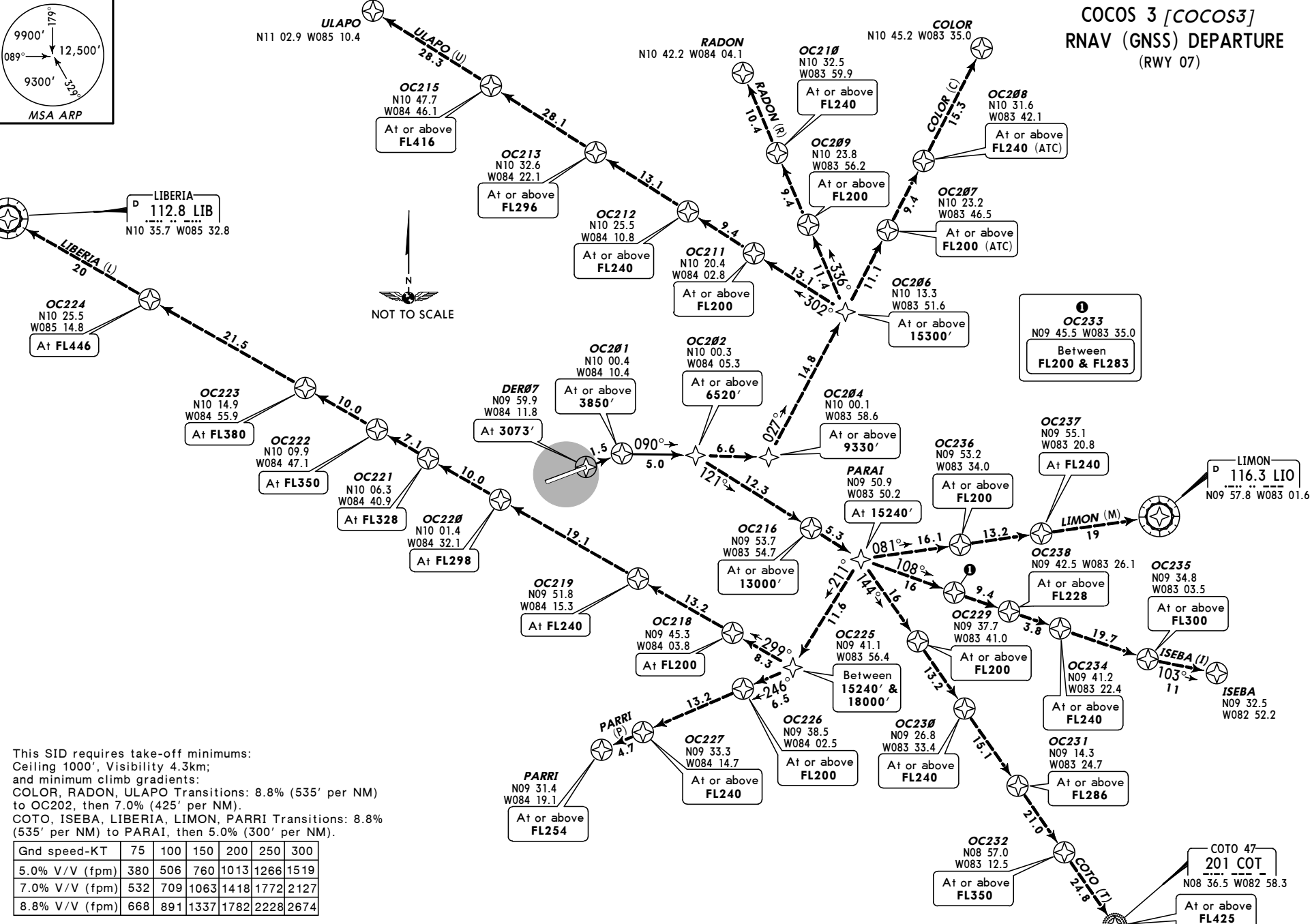
ARENA (A/UA-502)	Over CACAO continue on airway. EXPECT higher after ARENA.
BARVA (A/UA-322)	Over CACAO turn RIGHT heading 043° to JUANES, then turn RIGHT heading 070° to BARVA and continue on airway. EXPECT higher after BARVA.
JUANES (B/UB-767)	Over CACAO turn RIGHT heading 043° to JUANES and continue on airway. EXPECT higher after JUANES.

MROC/SJO
 (ALAJUELA) JUAN
 SANTAMARIA INTL

*COCO Departure (R) Apt Elev 3021' Trans level: FL200 Trans alt: 19000'

1. RADAR required.
2. Altitude restrictions due to arrivals.
3. All transitions must MAINTAIN and/or cross marked altitudes.

COCOS 3 [COCOS3]
 RNAV (GNSS) DEPARTURE
 (RWY 07)



This SID requires take-off minimums:
 Ceiling 1000', Visibility 4.3km;
 and minimum climb gradients:
 COLOR, RADON, ULAPO Transitions: 8.8% (535' per NM)
 to OC202, then 7.0% (425' per NM).
 COTO, ISEBA, LIBERIA, LIMON, PARRI Transitions: 8.8%
 (535' per NM) to PARAI, then 5.0% (300' per NM).

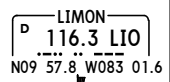
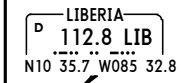
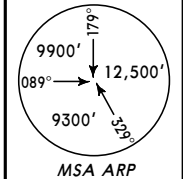
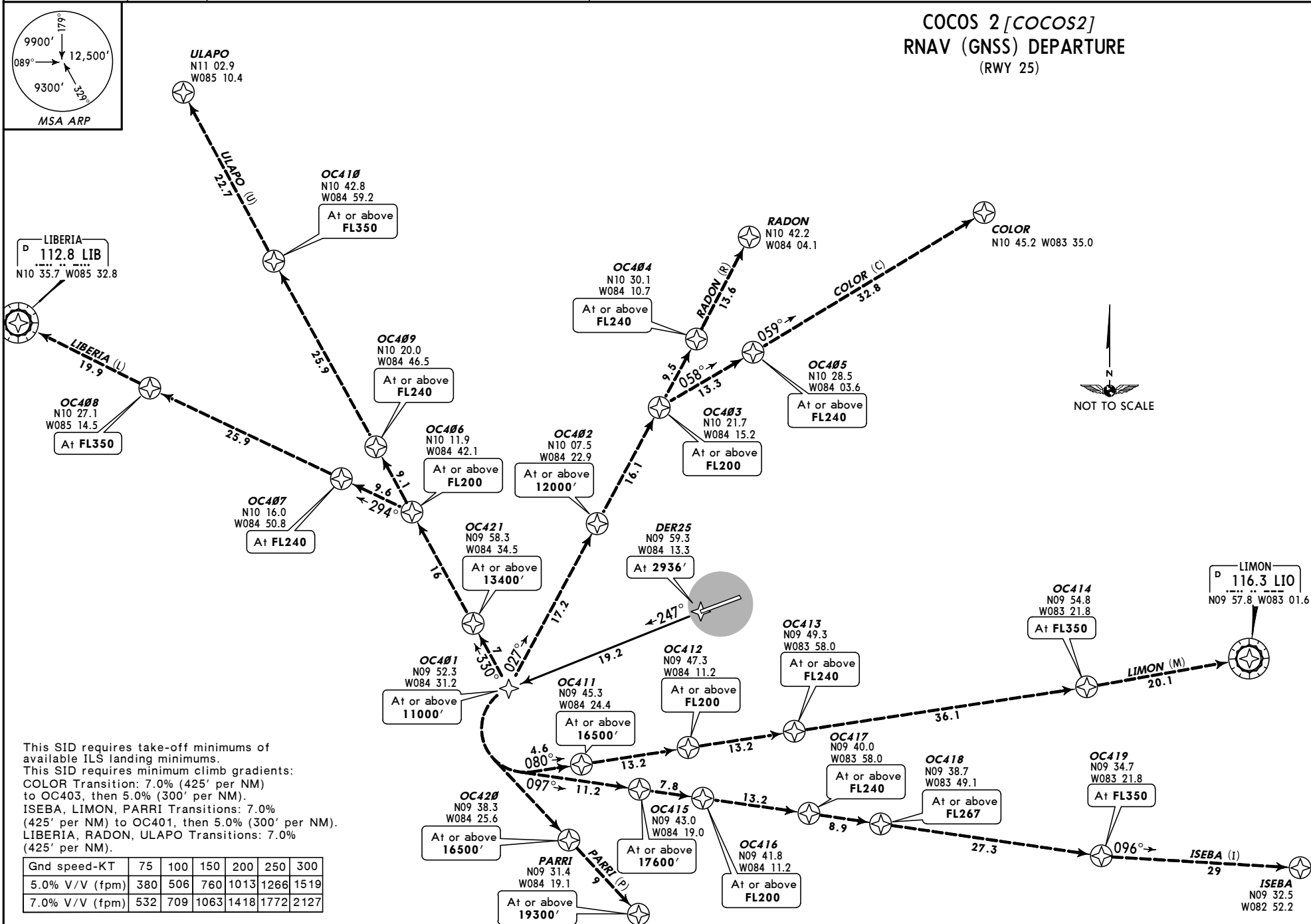
Gnd speed-KT	75	100	150	200	250	300
5.0% V/V (fpm)	380	506	760	1013	1266	1519
7.0% V/V (fpm)	532	709	1063	1418	1772	2127
8.8% V/V (fpm)	668	891	1337	1782	2228	2674

MROC/SJO
 (ALAJUELA) JUAN
 SANTAMARIA INTL

JEPPESEN
 26 APR 13 10-3C

SAN JOSE, COSTA RICA
 RNAV SID

*COCO Departure (R) 120.5 Apt Elev 3021' Trans level: FL200 Trans alt: 19000' RADAR required.



This SID requires take-off minimums of available ILS landing minimums.
 This SID requires minimum climb gradients:
 COLOR Transition: 7.0% (425' per NM) to OC403, then 5.0% (300' per NM).
 ISEBA, LIMON, PARRI Transitions: 7.0% (425' per NM) to OC401, then 5.0% (300' per NM).
 LIBERIA, RADON, ULAPO Transitions: 7.0% (425' per NM).

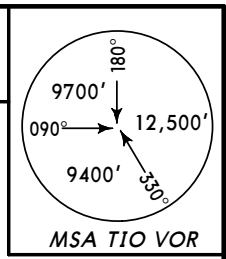
Gnd speed-KT	75	100	150	200	250	300
5.0% V/V (fpm)	380	506	760	1013	1266	1519
7.0% V/V (fpm)	532	709	1063	1418	1772	2127

MROC/SJO
 (ALAJUELA) JUAN
 SANTAMARIA INTL

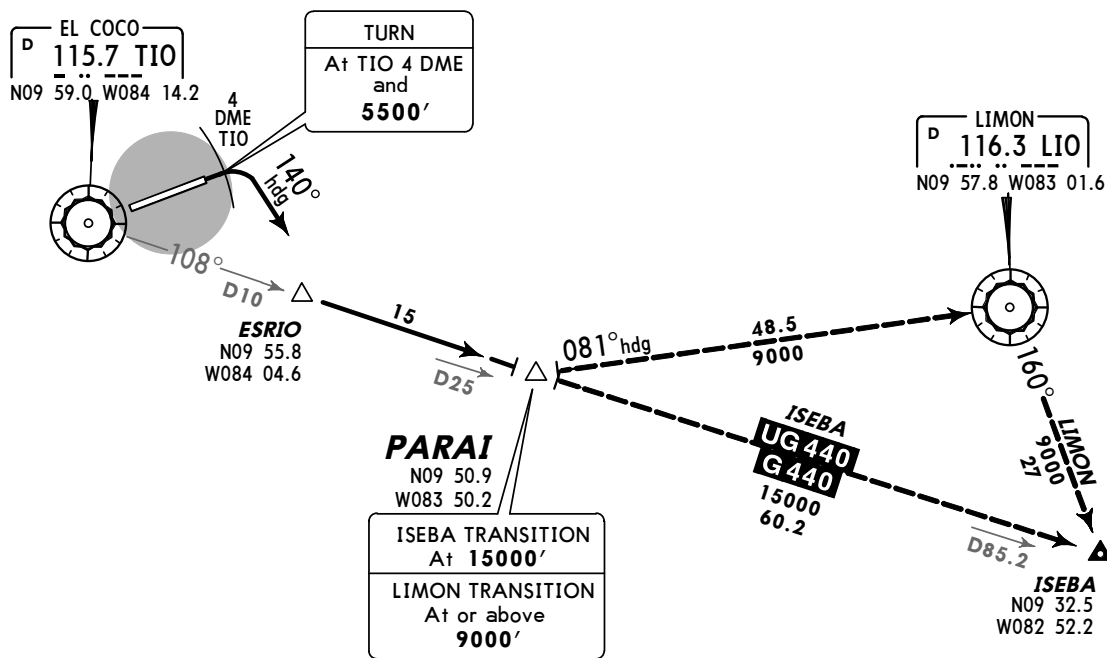
JEPPESEN
 21 DEC 12 (10-3D)

SAN JOSE, COSTA RICA
SID

*COCO Departure (R) 120.5	Apt Elev 3021'	Trans level: FL200 Trans alt: 19000'
--	--------------------------	---



PARAI 3 DEPARTURE
[PARAI3]
 (RWY 07)



Direct distance from
 (Alajuela) Juan Santamaria Intl to:
 PARAI **24 NM**

This SID requires minimum climb gradients of:
 ISEBA Transition: 450' per NM.
 LIMON Transition: 300' per NM.

Gnd speed-KT	75	100	150	200	250	300
300' per NM	375	500	750	1000	1250	1500
450' per NM	563	750	1125	1500	1875	2250



INITIAL CLIMB

MAINTAIN runway heading with the maximum climb gradient possible to TIO 4 DME and **5500'**, then **RIGHT** turn to 140° heading to intercept TIO R-108. Continue with departure procedure.

TRANSITIONS

ISEBA	Continue on TIO R-108 to PARAI.
LIMON	Continue on TIO R-108 to PARAI, over PARAI turn LEFT to heading 081° to LIO. Over LIO turn RIGHT to 160° to ISEBA.

MROC/SJO
 (ALAJUELA) JUAN
 SANTAMARIA INTL

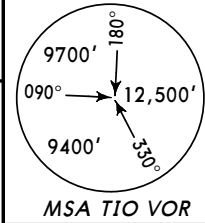
JEPPESEN
 21 DEC 12 (10-3E)

SAN JOSE, COSTA RICA
SID

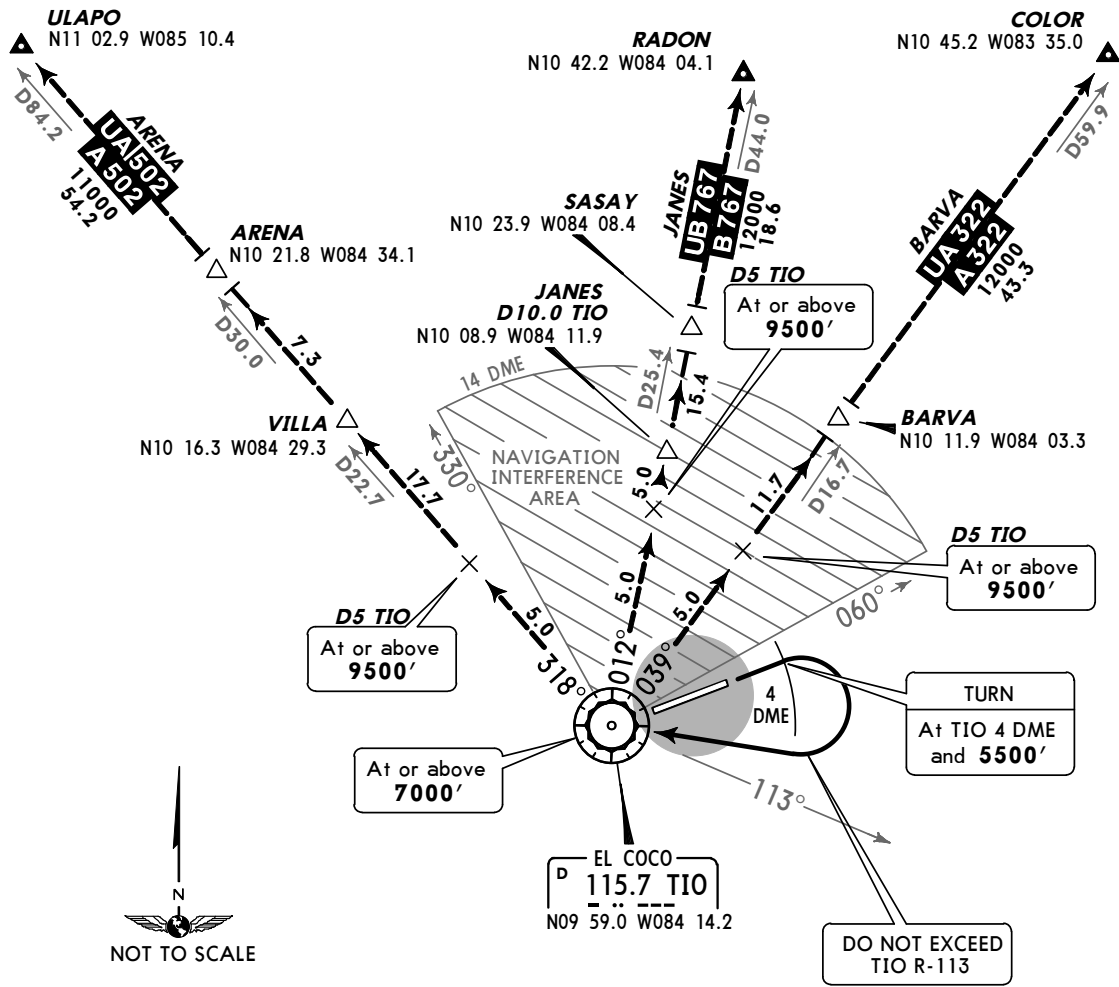
*COCO
 Departure (R)
120.5

Apt Elev
3021'

Trans level: FL200 Trans alt: 19000'
RADAR required.



POAS 4 DEPARTURE
[POAS4]
 (RWY 07)



This SID requires a minimum climb gradient of 500' per NM.

Gnd speed-KT	75	100	150	200	250	300
500' per NM	625	833	1250	1667	2083	2500

Direct distance from (Alajuela) Juan Santamaria Intl to:
TIO 2 NM

INITIAL CLIMB

MAINTAIN runway heading with the maximum climb gradient possible to TIO 4 DME and **5500'**, then **RIGHT** turn to TIO without exceeding TIO R-113. Continue with departure procedure.

ROUTING

Depart TIO on the airway as authorized per ATC.

TRANSITIONS

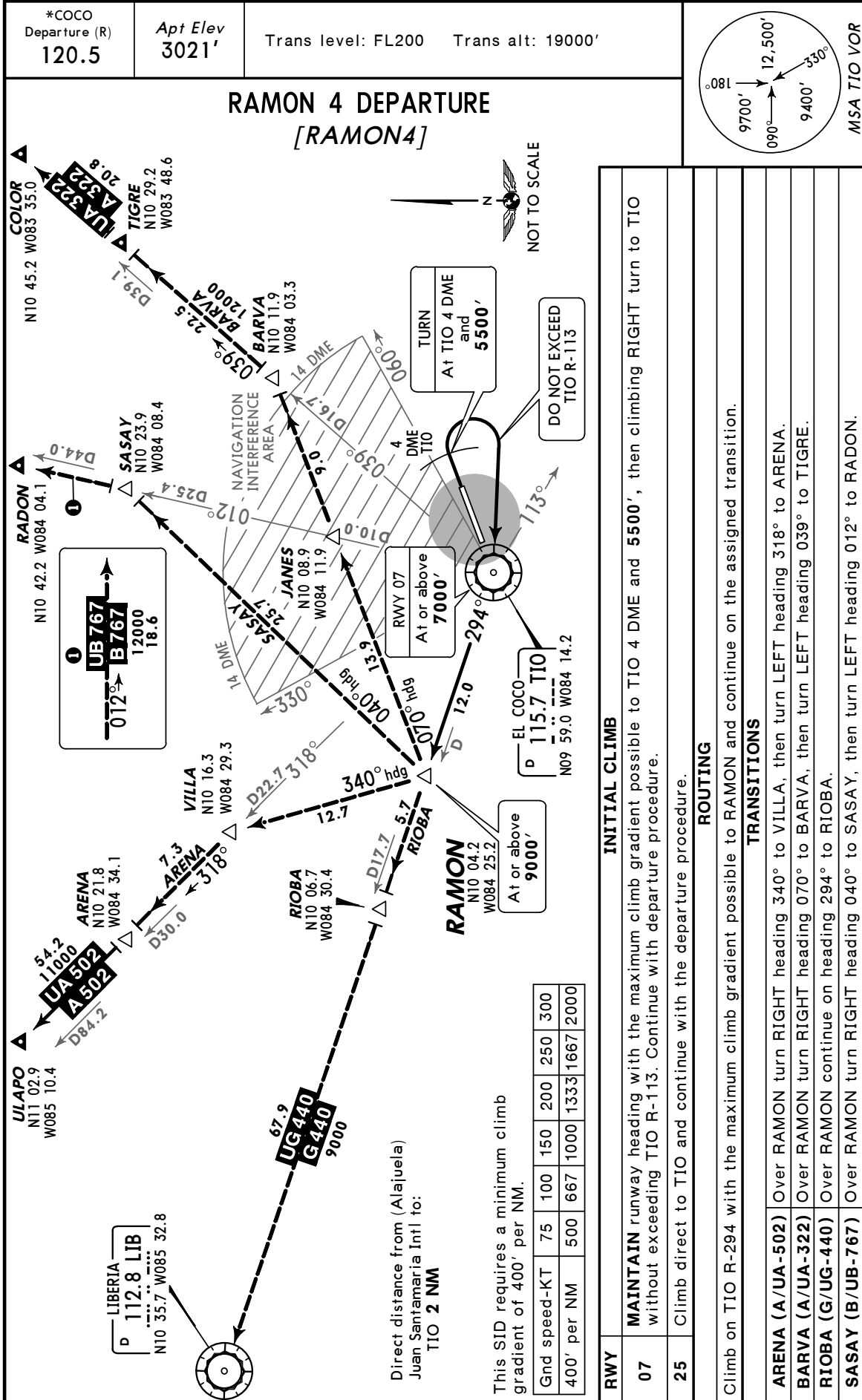
ARENA (A/UA-502)	From TIO continue on airway, EXPECT higher after ARENA.
BARVA (A/UA-322)	From TIO continue on airway, EXPECT higher after BARVA.
JANES (B/UB-767)	From TIO continue on airway, EXPECT higher after JANES.

MROC/SJO
 (ALAJUELA) JUAN
 SANTAMARIA INTL

JEPPESEN
 21 DEC 12 **(10-3F)**

SAN JOSE, COSTA RICA

SID



Direct distance from (Alajuela)
 Juan Santamaria Intl to:
TIO 2 NM

This SID requires a minimum climb
 gradient of 400' per NM.

Gnd speed-KT	75	100	150	200	250	300
400' per NM	500	667	1000	1333	1667	2000

RWY						
07	MAINTAIN runway heading with the maximum climb gradient possible to TIO 4 DME and 5500' , then climbing RIGHT turn to TIO without exceeding TIO R-113. Continue with departure procedure.					
25	Climb direct to TIO and continue with the departure procedure.					
ROUTING						
Climb on TIO R-294 with the maximum climb gradient possible to RAMON and continue on the assigned transition.						
TRANSITIONS						
ARENA (A/UA-502) Over RAMON turn RIGHT heading 340° to VILLA, then turn LEFT heading 318° to ARENA.						
BARVA (A/UA-322) Over RAMON turn RIGHT heading 070° to BARVA, then turn LEFT heading 039° to TIGRE.						
RIOBA (G/UG-440) Over RAMON continue on heading 294° to RIOBA.						
SASAY (B/UB-767) Over RAMON turn RIGHT heading 040° to SASAY, then turn LEFT heading 012° to RADON.						

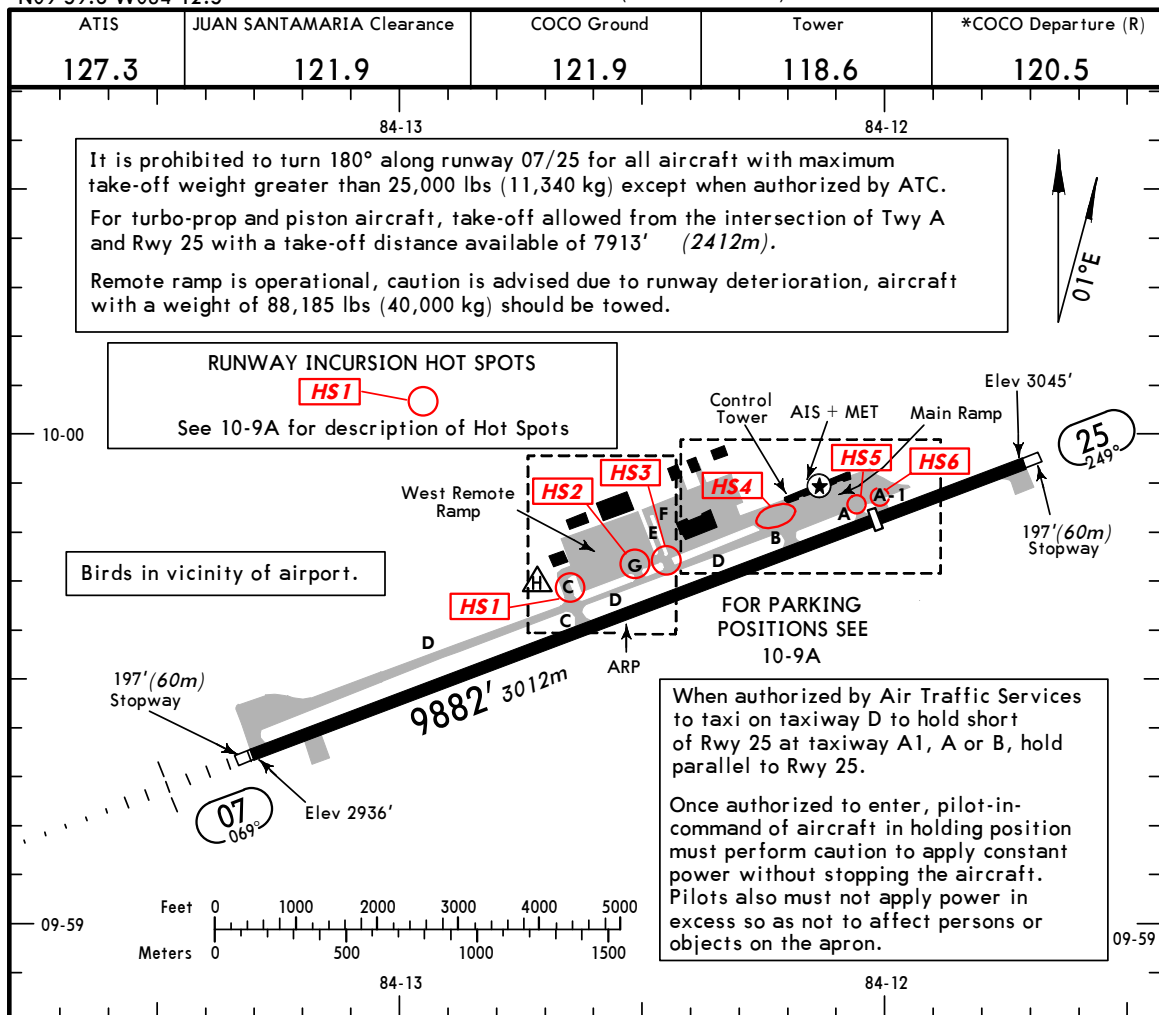
MROC/SJO

Apt Elev **3021'**
 N09 59.6 W084 12.5



SAN JOSE, COSTA RICA

28 SEP 12 **(10-9)** (ALAJUELA) JUAN SANTAMARIA INTL



ADDITIONAL RUNWAY INFORMATION

RWY		USABLE LENGTHS		TAKE-OFF	WIDTH
		Threshold	Glide Slope		
07	HIRL MALSR REIL PAPI (angle 3.0°)	① 9685' 2952m	① 8761' 2670m	9685' 2952m	148'
25	HIRL	② 7815' 2382m		9783' 2982m	45m

- ① Last 197' (60m) not available for landing.
- ② Last 98' (30m) not available for landing.

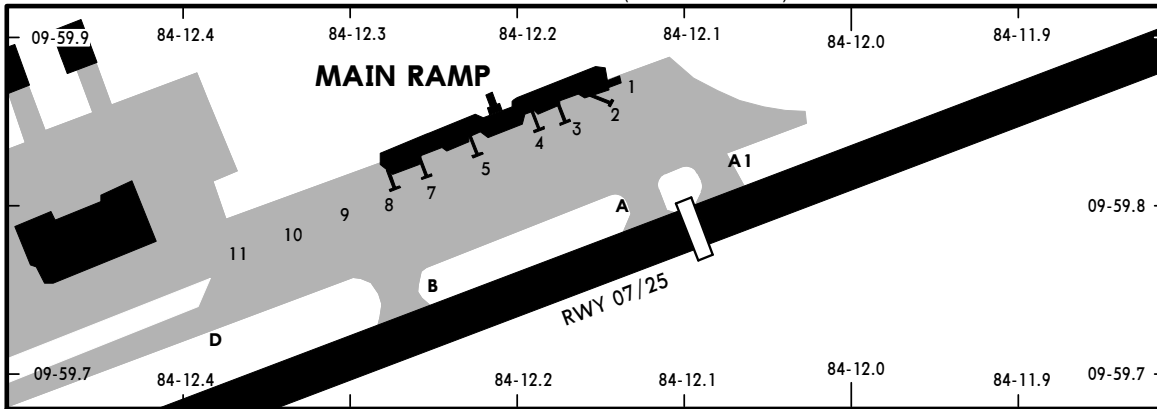
TAKE-OFF		FOR FILING AS ALTERNATE			
	Rwy 25	Rwy 07	ILS DME Rwy 07	LOC DME Rwy 07 RADAR ASR Rwy 07	VOR DME Rwy 07
1 & 2 Eng	1 200' - 1.2 km	1000' - 4.3 km	A	800' - 3.2 km	800' - 3.6 km
3 & 4 Eng			B		
	C				
	D		800' - 4.4 km		

1 GS or LOC out: 400' - 1.6 km.

MROC/SJO

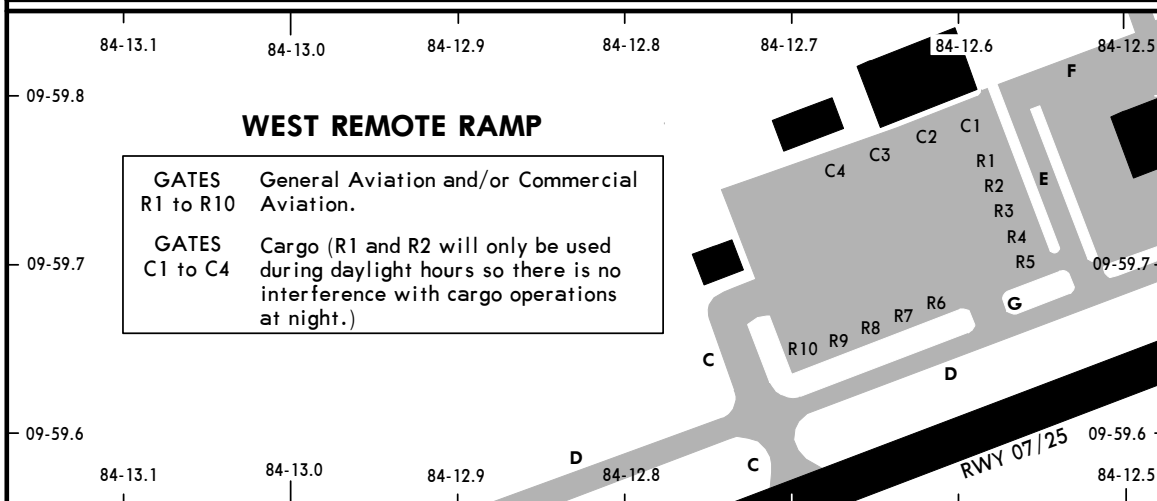


SAN JOSE, COSTA RICA
 (ALAJUELA) JUAN SANTAMARIA INTL



PARKING STAND COORDINATES

STAND No.	COORDINATES
1, 2	N09 59.9 W084 12.1
3 thru 5	N09 59.8 W084 12.2
7 thru 10	N09 59.8 W084 12.3
11	N09 59.8 W084 12.4



GATES General Aviation and/or Commercial Aviation.
 R1 to R10

GATES Cargo (R1 and R2 will only be used during daylight hours so there is no interference with cargo operations at night.)
 C1 to C4

PARKING STAND COORDINATES

STAND No.	COORDINATES
C-1 thru C-3	N09 59.8 W084 12.6
C-4	N09 59.8 W084 12.7
R1	N09 59.8 W084 12.6
R2 thru R7	N09 59.7 W084 12.6
R8, R9	N09 59.7 W084 12.7
R10	N09 59.6 W084 12.7

RUNWAY INCURSION HOT SPOTS

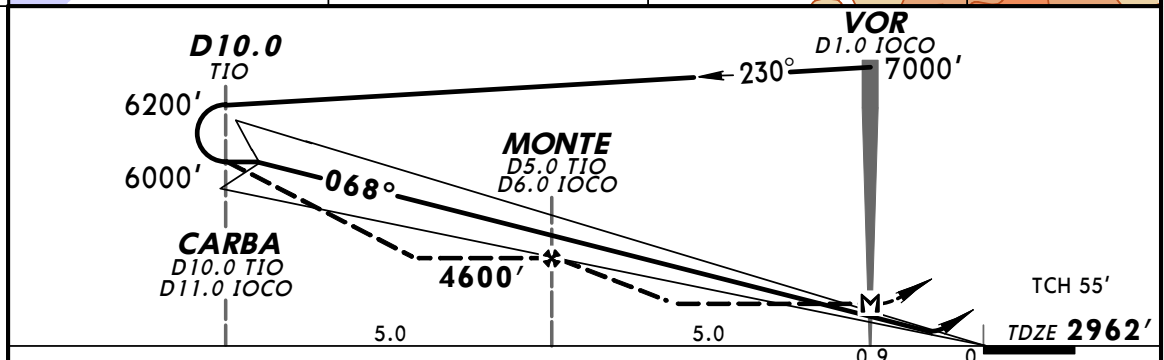
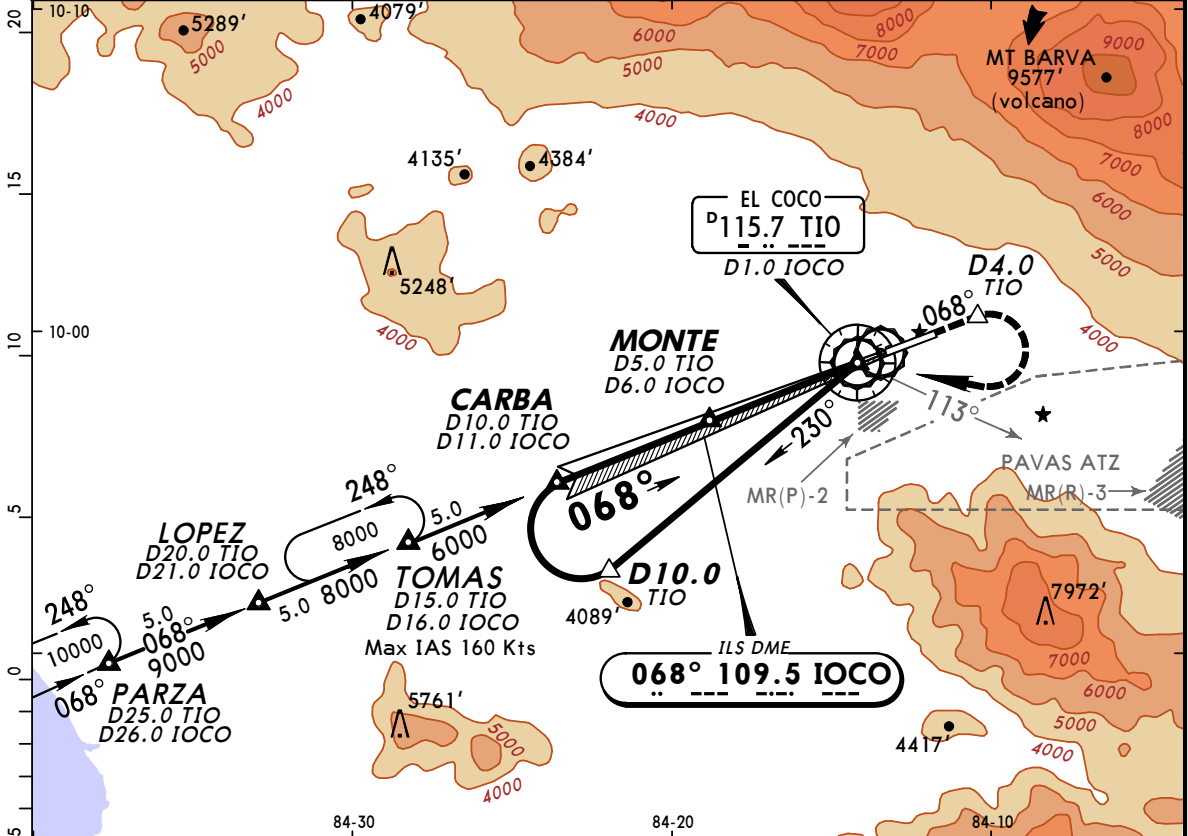


- HS1** Risk of collision between aircraft taxiing on Twy D with aircraft exiting the Rwy on Twy C. Aircraft taxiing to THR Rwy 07 are not visible to the tower on Twy C north of Twy D.
- HS2** Risk of collision between aircraft on Twy D with aircraft being towed from remote ramp Twy G. Area not visible from the control tower.
- HS3** Risk of collision between aircraft taxiing on Twy D with aircraft taxiing on Twy E; risk vehicles crossing Twy E to and from the main apron as well as people crossing. Area not visible from the control tower.
- HS4** Risk of collision of aircraft taxiing on Twy D with aircraft and scaffolding in front of COOPESA ramp. Risk to aircraft departing and entering SANSA ramp and Fire Dept ramp, vehicles exiting baggage claim area moving toward the main jetbridges, aircraft exiting at Rwy intersection B and moving vehicles from east to west in vehicular lane.
- HS5** Risk of collision between aircraft taxiing on Twy D and aircraft leaving the Rwy at intersection A and between aircraft and vehicles on the road from east to west in vehicular lane.
- HS6** Risk of collision between aircraft taxiing on Twy D and aircraft leaving the Rwy at intersection A 1 and between aircraft and vehicles on the road from east to west in street vehicle as well as mobile equipment east of A 1.

Special attention is recommended for aircraft taking off and landing with aircraft leaving intersection B and A, as some are kept waiting for marshallsers for entrance to jetbridges and part of their fuselage encroaches on the Rwy.

MROC/SJO (ALAJUELA) JUAN SANTAMARIA INTL **(11-1)** 18 JAN 13 **ILS DME Rwy 07**

ATIS 127.3	COCO Center (R) 119.6	*COCO Approach (R) 120.5	COCO Tower 118.6	Ground 121.9
LOC IOCO 109.5	Final Apch Crs 068°	Minimum Alt MONTE 4600' (1638')	ILS DA(H) 3162' (200')	Apt Elev 3021' TDZE 2962'
MISSED APCH: Climb outbound on TIO VOR R-068 to D4.0 TIO and 5500'. Then turn RIGHT, continue climbing to TIO VOR crossing at 7000'. Continue per ATC instructions. Do not exceed TIO VOR R-113. Obstacles in the missed approach area require a climb gradient of 300'/NM.				<p>MSA TIO VOR</p>
Alt Set: hPa TDZ Elev: 104 hPa Trans level: FL200 Trans alt: 19000' 1. Do not exceed 200 kts in any phase of the procedure. 2. Do not enter PAVAS ATZ due to high density general aviation traffic. 3. At CARBA INT contact tower.				



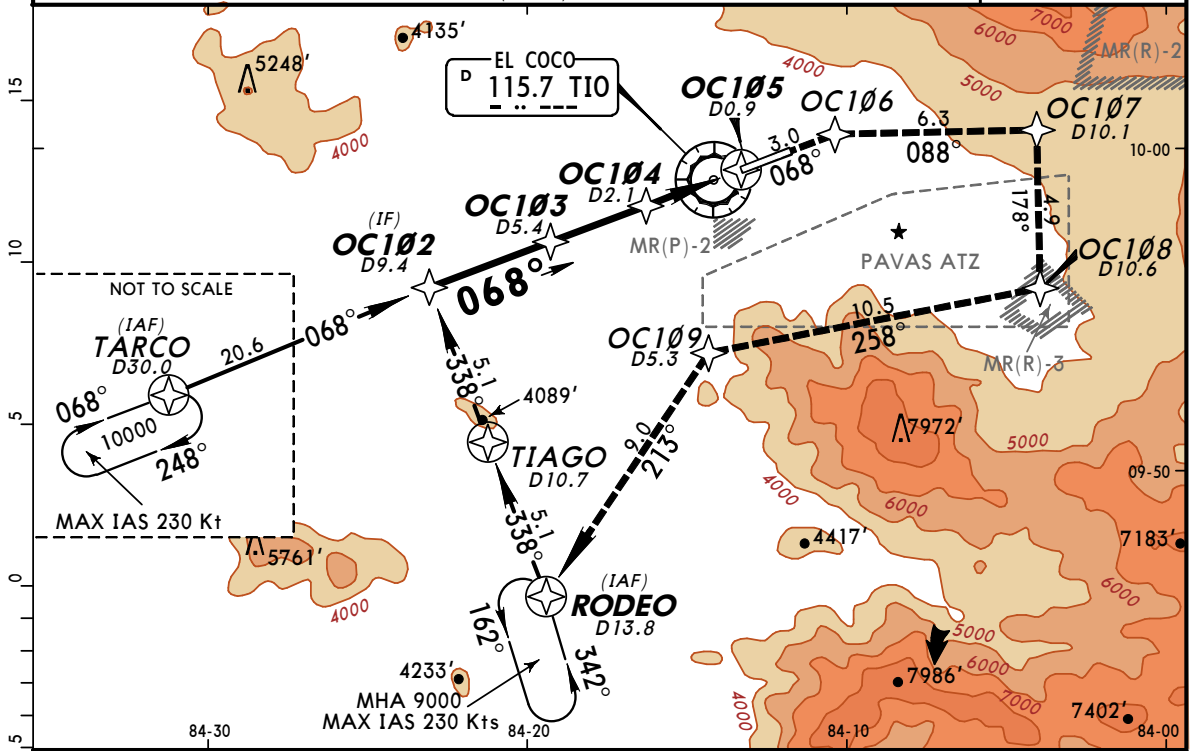
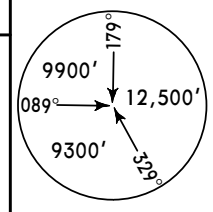
Gnd speed-Kts	70	90	100	120	140	160	PAPI MALS REIL 5500' on 115.7 R-068	TIO D4.0 TIO	
Gs	3.00°	372	478	531	637	743			849
FAF to MAP	5.0	4:17	3:20	3:00	2:30	2:09			1:53

STRAIGHT-IN LANDING RWY07		CEILING REQUIRED		CIRCLE-TO-LAND	
ILS DA(H) 3162' (200')		LOC (GS out) MDA(H) 3360' (398')			
FULL		RAIL or ALS out		RAIL out ALS out	
CEILING-VISIBILITY					
A					
B	200' - 0.8 km	200' - 1.2 km	400' - 1.6 km	NA	
C					
D			400' - 2.0 km		

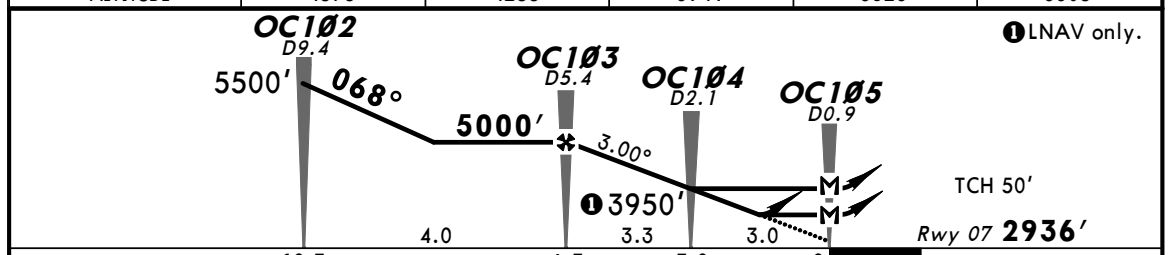
PANS OPS

MROC/SJO **JEPPESEN** **SAN JOSE, COSTA RICA**
 (ALAJUELA) JUAN SANTAMARIA INTL (12-20) 18 JAN 13 **RNAV (RNP) Rwy 07**

ATIS 127.3	COCO Center (R) 119.6	*COCO Approach (R) 120.5	COCO Tower 118.6	Ground 121.9
RNAV	Final Apch Crs 068°	Minimum Alt OC103 5000' (2064')	LNAV/VNAV DA(H) 3300' (364')	Apt Elev 3021' Rwy 07 2936'
MISSED APCH: Climb on track 068° to OC106. Turn RIGHT on track 088° (MAX IAS 190 Kt) to OC107 at or above 5400'; turn RIGHT (MAX IAS 190 Kt) on track 178° to OC108 at or above 6600', turn RIGHT on track 258° to OC109 at or above 8130', turn LEFT on track 213° to RODEO at 9000' and join hold. Missed Apch: Climb on gradient formed by the PAVAS ATZ vertical limit.				
Alt Set: hPa (IN on req) Rwy Elev: 103 hPa Trans level: FL 200 Trans alt: 19000' 1. Radar surveillance service required. 2. RNP 0.30. 3. LNAV/VNAV not authorized below 15° C (59° F).				



DIST to THR	5.0	4.0	3.0	2.0	1.0
ALTITUDE	4578'	4258'	3941'	3623'	3305'

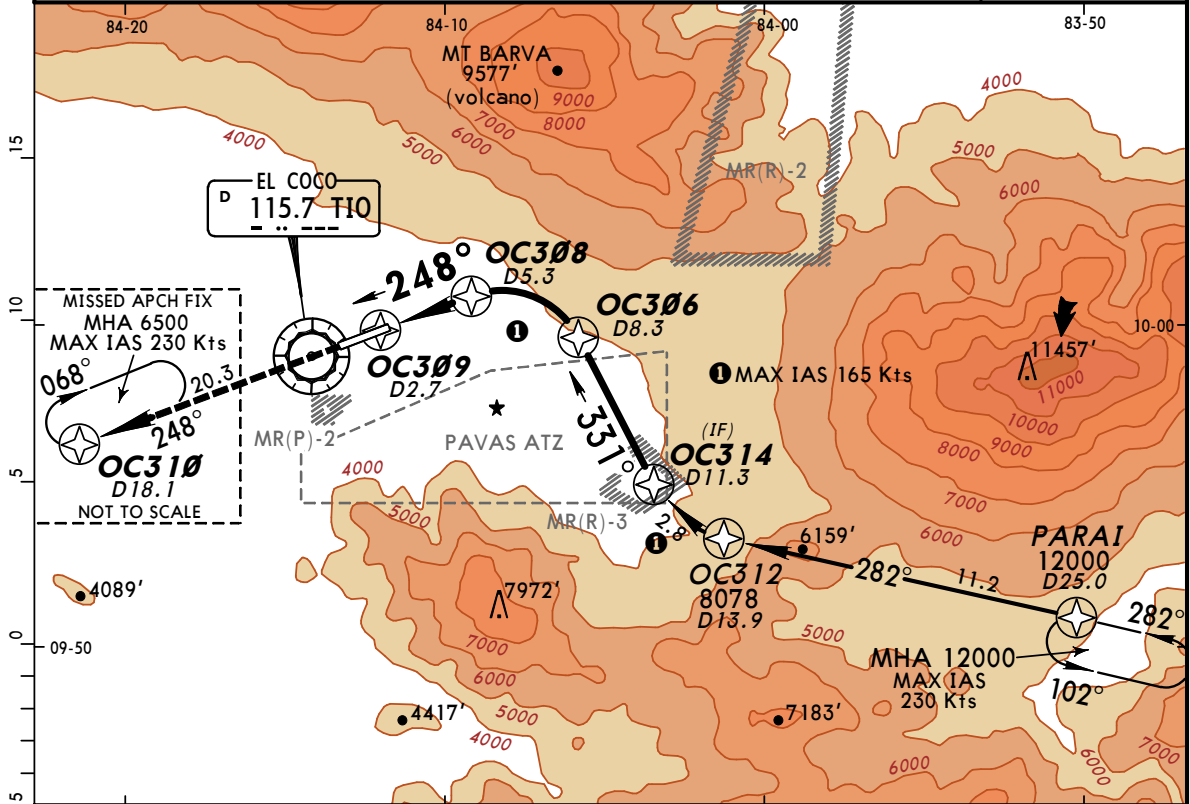


Gnd speed-Kts	70	90	100	120	140	160	MALSR	↑ on 068° OC106
Descent Gradient or Descent Angle	5.2% [3.00°]	372	478	531	637	743	849	
MAP at OC105								

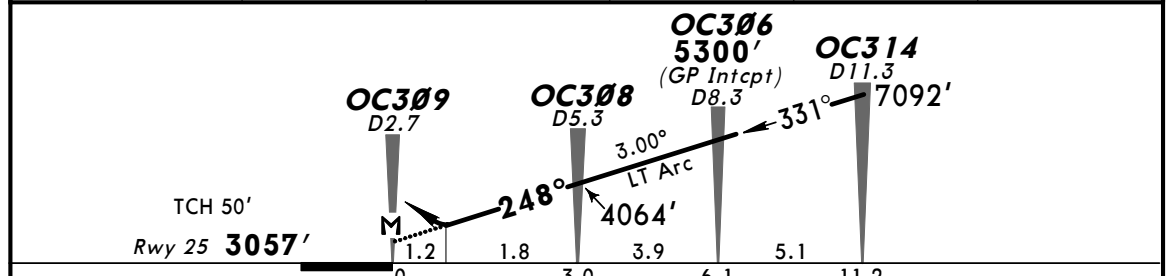
STRAIGHT-IN LANDING RWY 07			CEILING REQUIRED			CIRCLE-TO-LAND		
Missed Apch Climb Gradient 4.5% to 3795'			Missed Apch Climb Gradient 3.0% to 4280'					
LNAV/VNAV DA(H) 3300' (364')			LNAV MDA(H) 3300' (364')			LNAV MDA(H) 3950' (1014')		
RAIL or ALS out			RAIL or ALS out			RAIL or ALS out		
CEILING-VISIBILITY								
PANS OPS	A					Max Kts	MDA(H)	
	B	500' - 2.8 km	500' - 2.8 km	1200' - 2.8 km	100	3800' (779') - 2.8 km		
	C				135	4100' (1079') - 2.8 km		
	D				180	4800' (1779') - 4.8 km		
					205	5800' (2779') - 4.8 km		

MROC/SJO 18 JAN 13 **JEPPESEN** **SAN JOSE, COSTA RICA**
 (ALAJUELA) JUAN SANTAMARIA INTL (12-21) **RNAV (RNP) EAST Rwy 25**

BRIEFING STRIP™	ATIS 127.3	COCO Center (R) 119.6	*COCO Approach (R) 120.5	COCO Tower 118.6	Ground 121.9	
	RNAV	Final Apch Crs 248°	Minimum Alt OC306 5300' (2243')	RNP 0.15 DA(H) 3457' (400')	Apt Elev 3021' Rwy 25 3057'	<p>ARP</p>
	MISSED APCH: Climb to 6500' on track 248° to OC310 and join hold.					
Alt Set: hPa (IN on req) Rwy Elev: 107 hPa Trans level: FL 200 Trans alt: 19000' 1. Radar surveillance service required. 2. RNP authorization required. 3. GPS required. 4. RF required on final. 5. Max IAS 165 Kt on final.						



DIST to THR	2.0	3.0	4.0	5.0	6.0
ALTITUDE	3744'	4064'	4381'	4700'	5018'

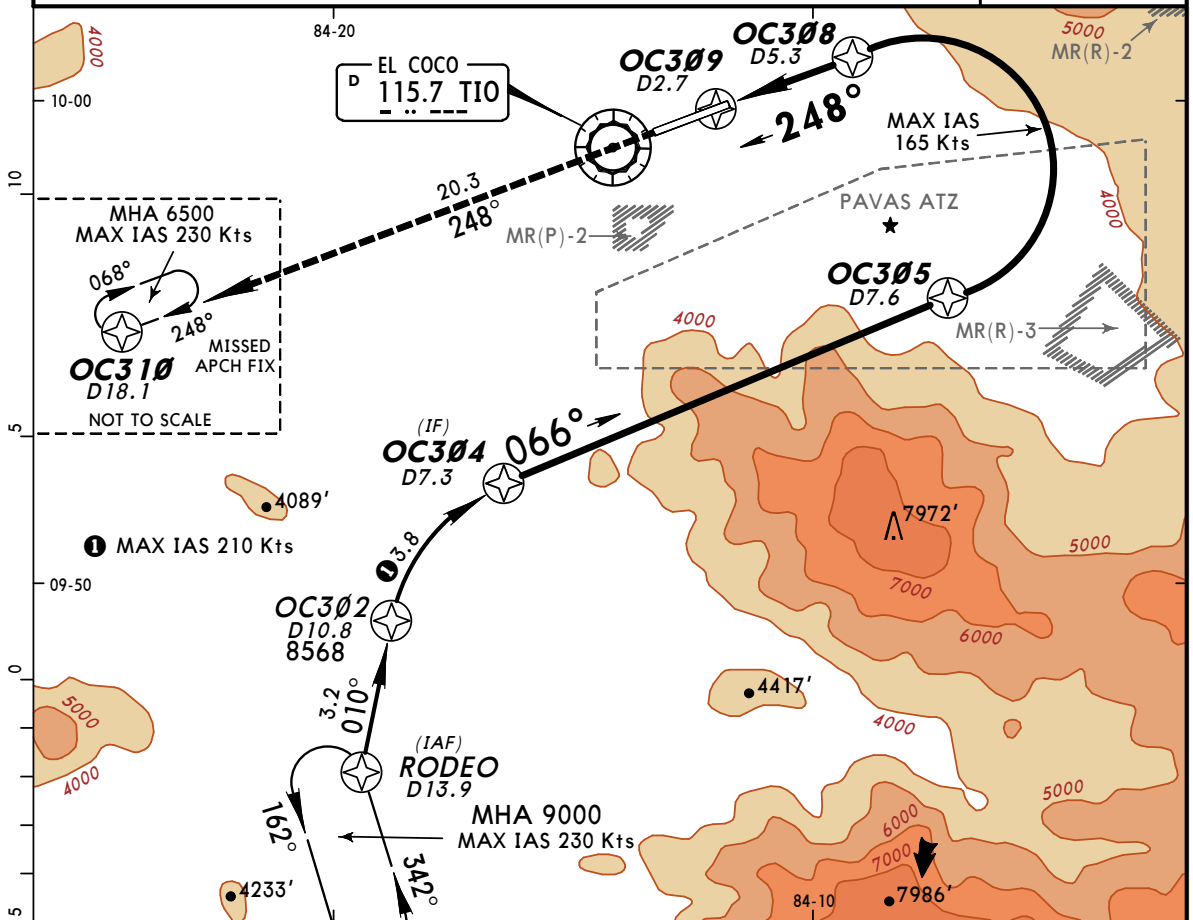


Gnd speed-Kts	70	90	100	120	140	160	6500' ↑ 248° OC310
Descent Angle	3.00°	372	478	531	637	743	
MAP at OC309							

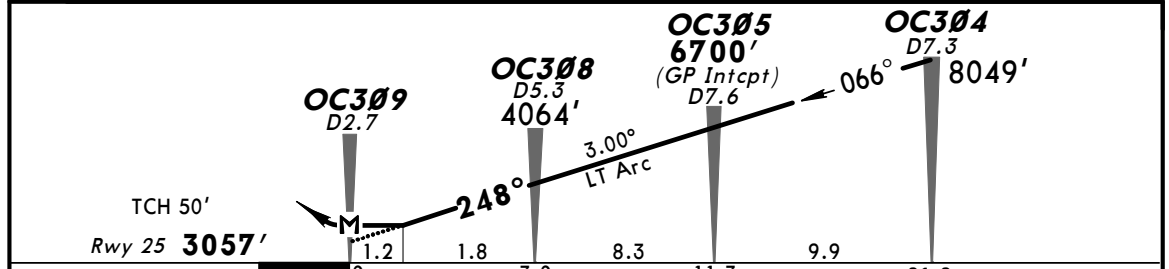
PANS OPS	STRAIGHT-IN LANDING RWY 25		CEILING REQUIRED	CIRCLE-TO-LAND		
	RNP 0.15		RNP 0.30		Max Kts MDA(H)	
	DA(H) 3457' (400')		DA(H) 3547' (490')			
	CEILING-VISIBILITY				100	3800' (779') -2.8 km
	A	500' - 2.8 km		600' - 2.8 km		135
B					180	4800' (1779') -4.8 km
C					205	5800' (2779') -4.8 km
D						

MROC/SJO 18 JAN 13 **JEPPESEN** **SAN JOSE, COSTA RICA**
 (ALAJUELA) JUAN SANTAMARIA INTL (12-22) RNAV (RNP) WEST Rwy 25

ATIS 127.3	COCO Center (R) 119.6	*COCO Approach (R) 120.5	COCO Tower 118.6	Ground 121.9
RNAV	Final Apch Crs 248°	Minimum Alt OC305 6700' (3643')	RNP 0.15 DA(H) 3457' (400') Apt Elev 3021' Rwy 25 3057'	
MISSED APCH: Climb to 6500' on track 248° to OC310 and join hold. Alt Set: hPa (IN on req) Rwy Elev: 107 hPa Trans level: FL 200 Trans alt: 19000' 1. Radar surveillance service required. 2. RNP authorization required. 3. GPS required. 4. RF required on final. 5. Max IAS 165 Kt on final.				



DIST to THR	2.0	3.0	4.0	5.0	6.0	7.0	8.0	9.0
ALTITUDE	3744'	4064'	4381'	4700'	5018'	5336'	5655'	5973'



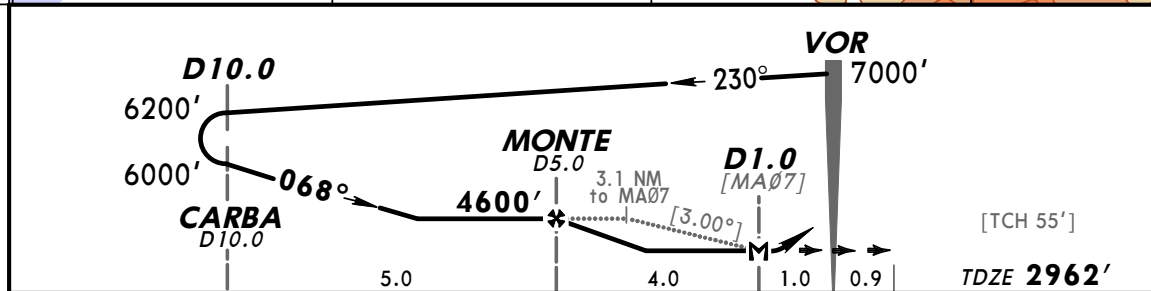
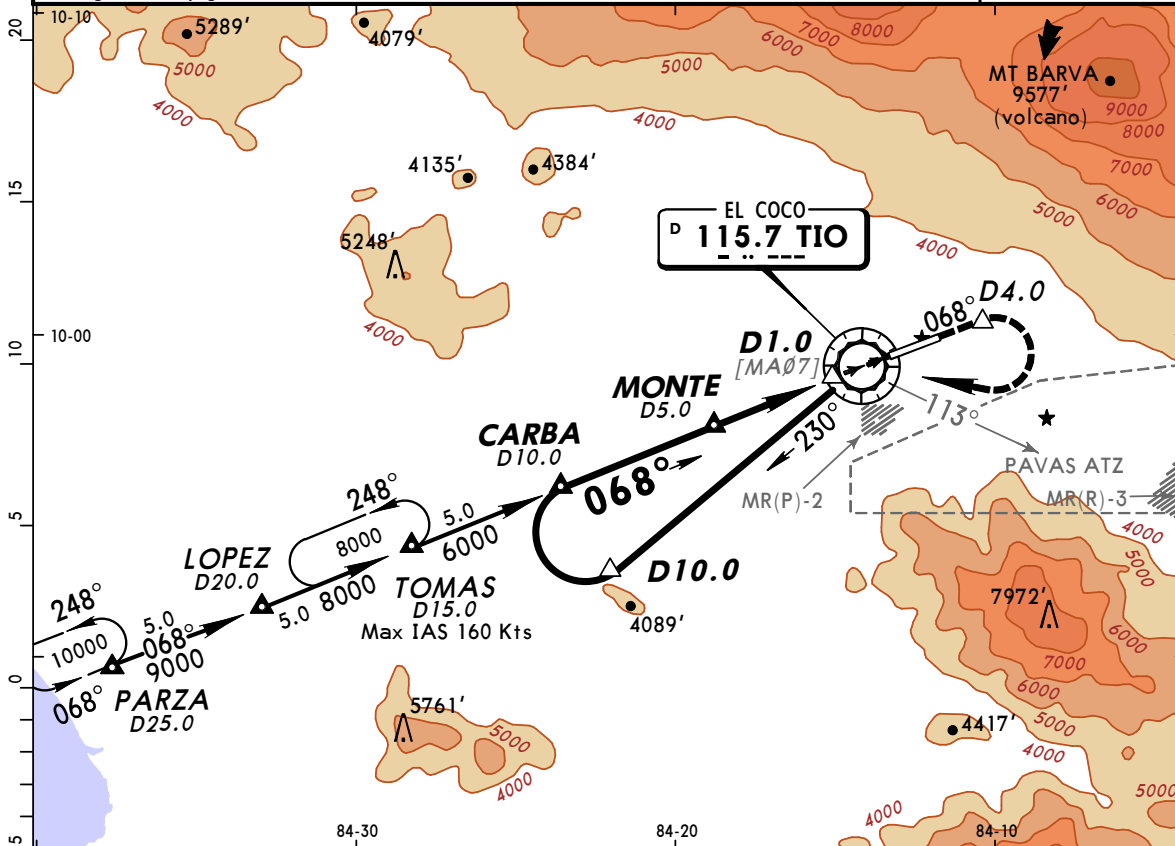
Gnd speed-Kts	70	90	100	120	140	160	6500'	248°	OC310	
Descent Angle	3.00°	372	478	531	637	743				849
MAP at OC309										

STRAIGHT-IN LANDING RWY 25				CEILING REQUIRED		CIRCLE-TO-LAND	
RNP 0.15 DA(H) 3457' (400')				RNP 0.30 DA(H) 3547' (490')		Max Kts	MDA(H)
A	500' - 2.8 km		600' - 2.8 km		100	3800' (779') - 2.8 km	
B					135	4100' (1079') - 2.8 km	
C					180	4800' (1779') - 4.8 km	
D					205	5800' (2779') - 4.8 km	

PANS OPS

MROC/SJO **JEPPESEN SAN JOSE, COSTA RICA**
 (ALAJUELA) JUAN SANTAMARIA INTL **(13-1)** 18 JAN 13 **VOR DME Rwy 07**

ATIS 127.3	COCO Center (R) 119.6	*COCO Approach (R) 120.5	COCO Tower 118.6	Ground 121.9
VOR TIO 115.7	Final Apch Crs 068°	Minimum Alt MONTE 4600' (1638')	MDA(H) 3300' (338')	Apt Elev 3021' TDZE 2962'
MISSED APCH: Climb outbound on TIO VOR R-068 to D4.0 TIO and 5500'. Then turn RIGHT continue climbing to TIO VOR crossing at 7000'. Continue per ATC instructions. Do not exceed TIO VOR R-113. Obstacles in the missed approach area require a climb gradient of 300'/NM.				<p>MSA TIO VOR</p>
Alt Set: hPa TDZ Elev: 104 hPa Trans level: FL 200 Trans alt: 19000' 1. Do not exceed 200 kts in any phase of the procedure. 2. Do not enter Pavas ATZ due to high density general aviation traffic. 3. At CARBA INT contact tower.				



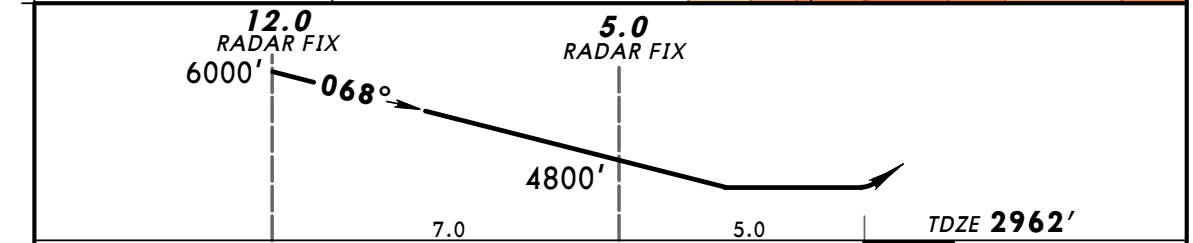
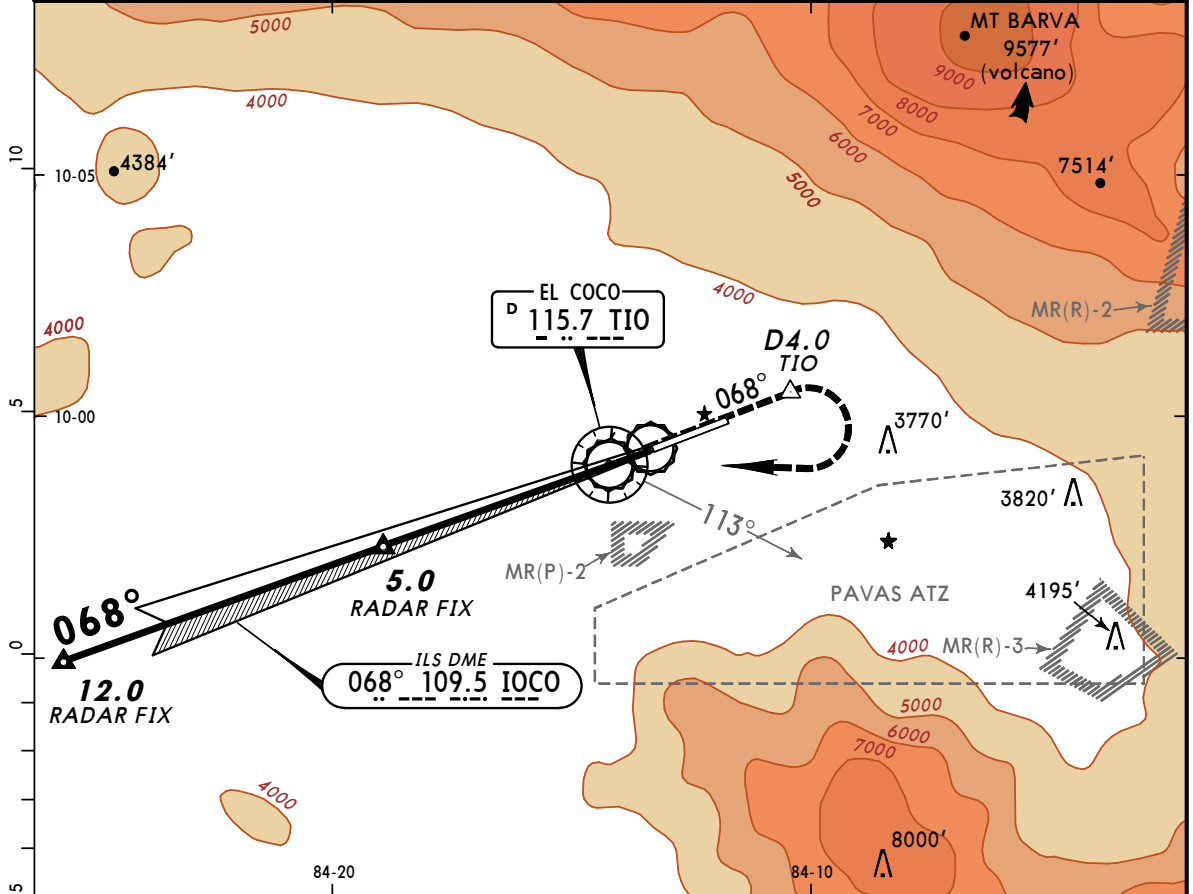
Gnd speed-Kts	70	90	100	120	140	160	PAPI MALSR REIL 5500' on 115.7 R-068 D4.0 TIO
Descent angle [3.00°]	372	478	531	637	743	849	
MAP at D1.0	4.0	3:26	2:40	2:24	2:00	1:43	
FAF to MAP	4.0	3:26	2:40	2:24	2:00	1:43	

STRAIGHT-IN LANDING RWY 07		CEILING REQUIRED	CIRCLE-TO-LAND
MDA(H) 3300' (338')			
RAIL out		ALS out	
300' - 2.8 km		SEE CYRUS VISUAL PROCEDURE	
A			
B			
C			
D			

PANS OPS

MROC/SJO **JEPPESEN SAN JOSE, COSTA RICA**
 (ALAJUELA) JUAN SANTAMARIA INTL (18-1) 03 AUG 12 **RADAR ASR Rwy 07**

ATIS 127.3		COCO Control (R) 119.6		*COCO Approach (R) 120.5		COCO Tower 118.6		Ground 121.9	
RADAR		Final Apch Crs 068°		No FAF		MDA(H) 3400' (438')		Apt Elev 3021' TDZE 2962'	
MISSED APCH: Climb outbound on TIO VOR R-068 to D4.0 TIO and 5500'. Then RIGHT turn and continue climbing to TIO VOR. Do not exceed TIO VOR R-113. Notify CONTROL at 6000' for radar vectors. Obstacles in the missed approach area require a climb gradient of 300'/NM. Alt Set: hPa TDZ Elev: 104 hPa Trans level: FL 200 Trans alt: 19000' 1. Do not exceed 200 kts in any phase of the procedure. 2. In case of communications failure, continue to TIO VOR maintaining last assigned altitude. 3. Do not enter Pavas ATZ. High density general aviation traffic.									



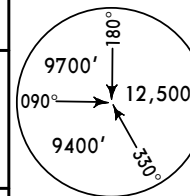
				PAPI	5500'	TIO	D4.0
				REIL	↑	on	TIO
				MALS		R-068	

STRAIGHT-IN LANDING		CEILING REQUIRED		CIRCLE-TO-LAND	
ASR 07					
MDA(H) 3400' (438')					
RAIL out		ALS out			
CEILING-VISIBILITY					

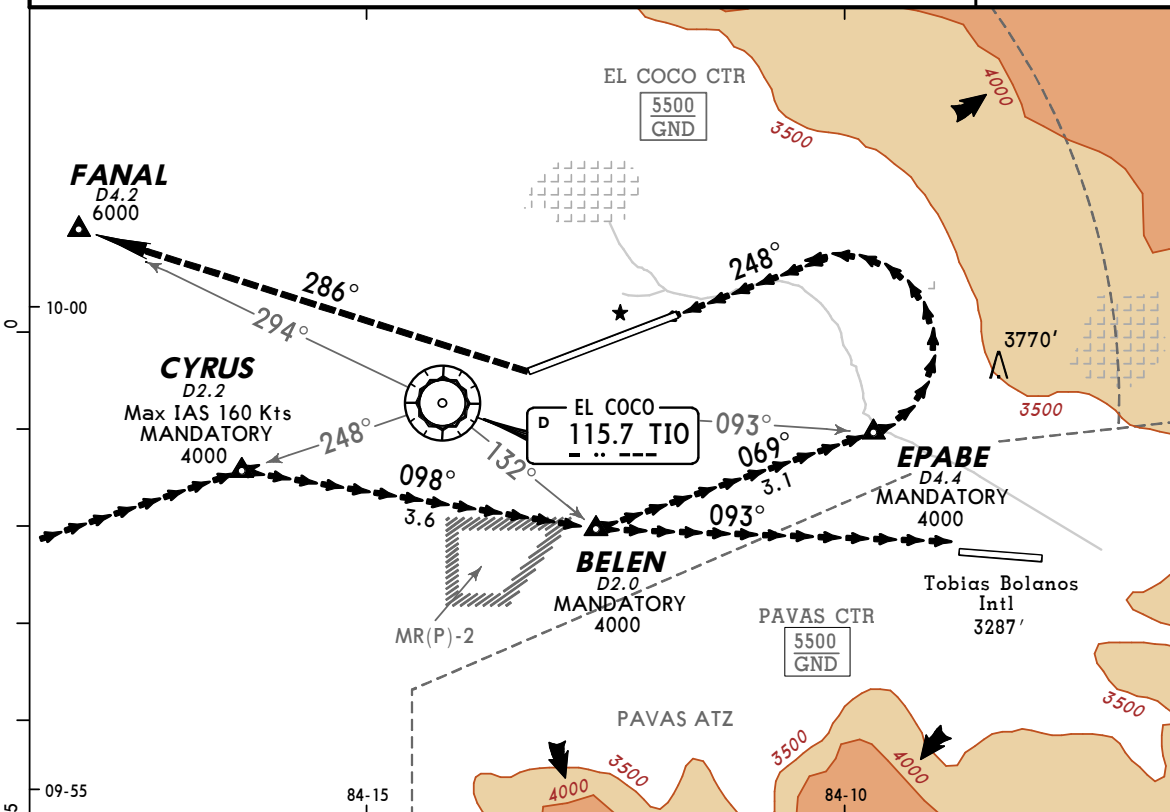
A	500' - 1.6 km		A	NA	
B			B		
C			C		
D			D		

MROC/SJO **JEPPESEN** **SAN JOSE, COSTA RICA**
 (ALAJUELA) JUAN SANTAMARIA INTL (19-1) 2 MAR 12 **CYRUS VISUAL Rwy 25**
 (ALSO SERVES TOBIAS BOLANOS INTL)

ATIS 127.3		COCO Center (R) 119.6		*COCO Approach (R) 120.5		COCO Tower 118.6		Ground 121.9	
VOR TIO 115.7		Final Apch Crs- Refer to Planview		No FAF		CEIL-VIS 1500'-5.0 km		Apt Elev 3021'	
MISSED APCH: Climb to 7000' and hold visual segment of flight legs, expect ATC instructions. TOBIAS BOLANOS INTL: Expect ATC instructions.									
Alt Set: hPa			Apt Elev: 107 hPa			Trans level: FL 200		Trans alt: 19000'	
1. MAX IAS 160 kts.									



MSA TIO VOR



REPORTING POINT DESCRIPTIONS

- CYRUS:** CROSSING ROADS BETWEEN CIRUELAS AND SAN RAFAEL OF ALAJUELA.
- BELÉN:** BELÉN HYDROELECTRIC PLANT
- EPABE:** EPA WARDWARE SHOP ON CARIARI BRIDGE CROSSING GENERAL CANAS HIGHWAY.
- FANAL:** MANOLOS OLD HALL ON LA GARITA CROSSING, ROUTE 1.

Lighting - Refer to Airport Chart	7000' ↑
--	-------------------

WEATHER MINIMUMS

Ceiling **1500'** - VIS **5.0 km**

PANS OPS