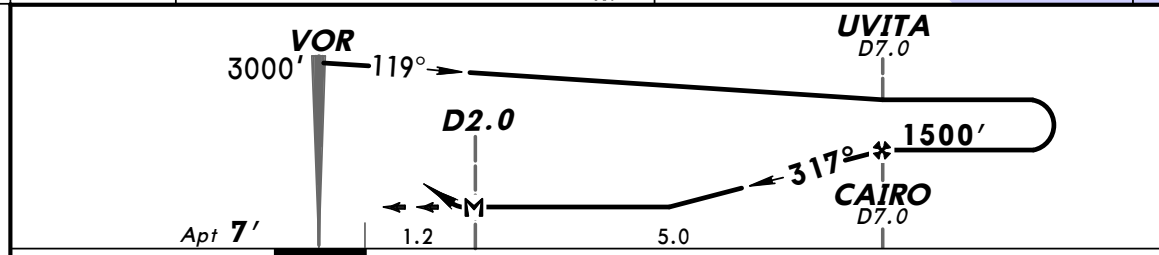
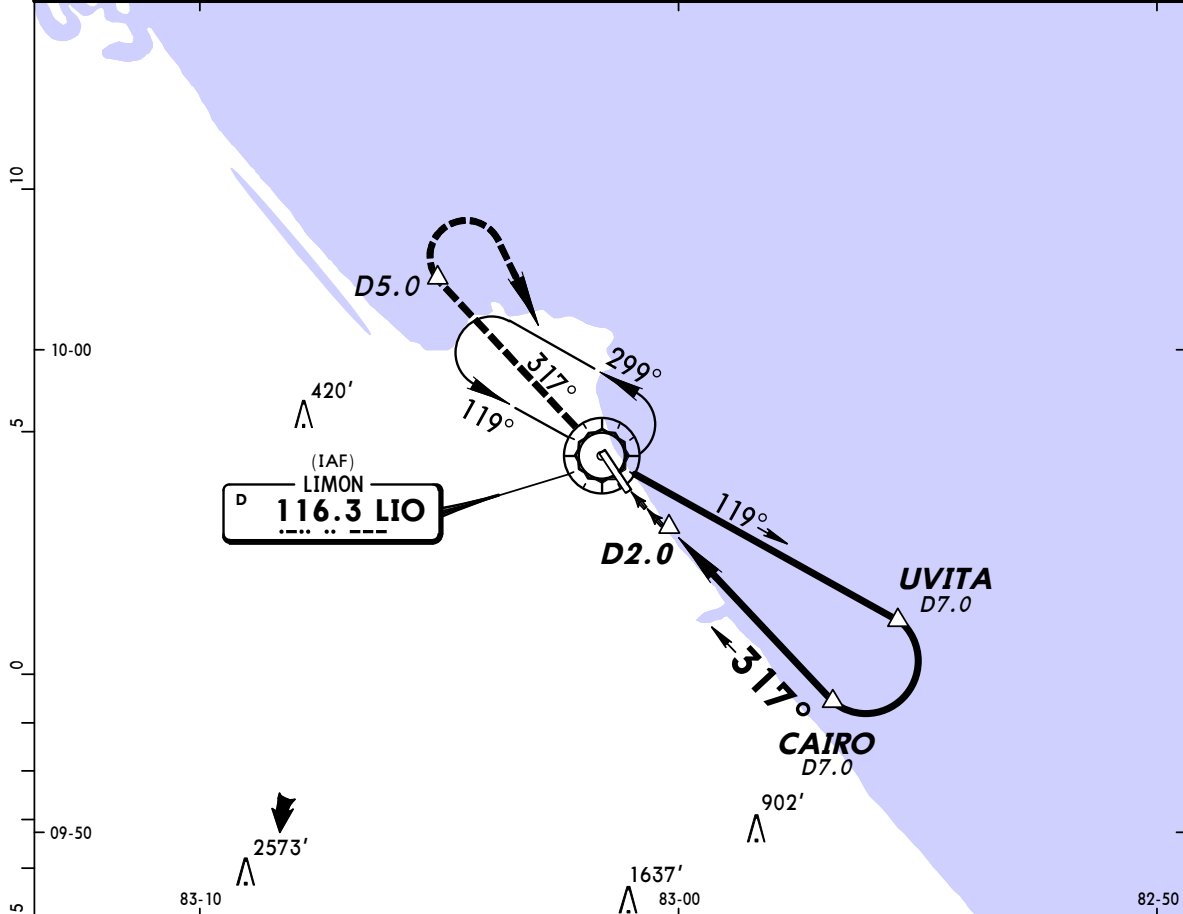


MRLM/LIO  
 LIMON INTL

JEPPESEN  
 3 AUG 12 (13-1)

PUERTO LIMON, COSTA RICA  
 CAT A & B VOR DME Rwy 32

*LIMON INTL UNICOM					
123.0					
VOR LIO <b>116.3</b>	Final Apch Crs <b>317°</b>	Minimum Alt <b>CAIRO</b> <b>1500'</b> (1493')	MDA(H) <b>620'</b> (613')	Apt Elev <b>7'</b>	
MISSED APCH: Climb outbound via LIO VOR R-317 to D5.0, then climbing RIGHT turn to LIO VOR and hold. Cross LIO VOR at or above 3000'.					
Alt Set: hPa		Apt Elev: 0 hPa		Trans level: FL 200	
		Trans alt: 19000'		MSA LIO VOR	



Gnd speed-Kts	70	90	100	120	140	160	REIL AVASI	↑ via <b>116.3</b> <b>R-317</b>	<b>D5.0</b>
MAP at D2.0 or CAIRO to MAP 5.0	4:17	3:20	3:00	2:30	2:09	1:53			

STRAIGHT-IN LANDING RWY 32		<b>CEILING REQUIRED</b>	CIRCLE-TO-LAND
MDA(H) <b>620'</b> (613')			
CEILING-VISIBILITY			
A	700' - 1.6 km		A
B			B
C	NA		C
D			D

PANS OPS

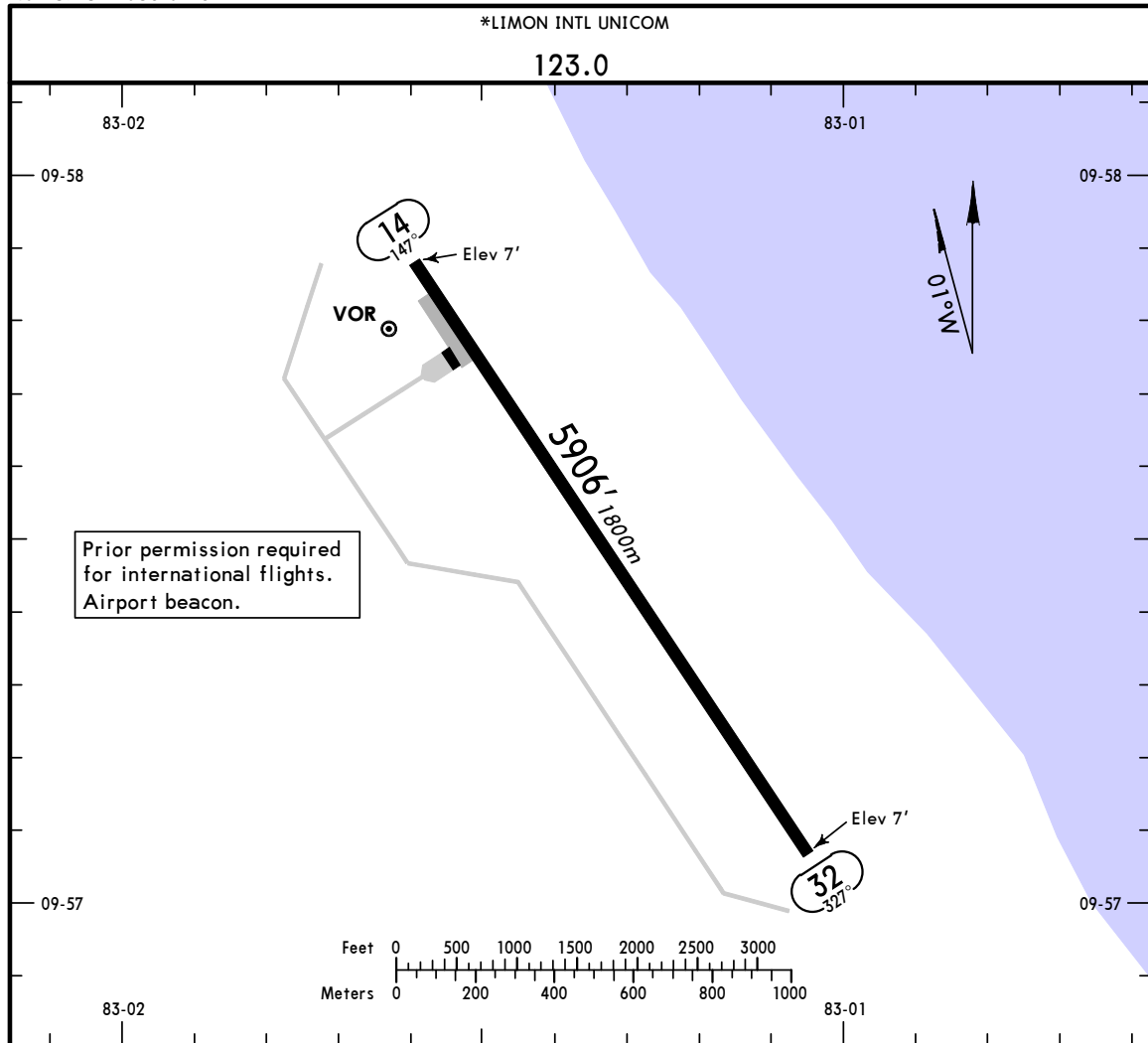
**MRLM/LIO**

Apt Elev **7'**  
 N09 57.5 W083 01.3

**JEPPESEN PUERTO LIMON, COSTA RICA**

3 AUG 12 **(13-1)**

LIMON INTL



**ADDITIONAL RUNWAY INFORMATION**

RWY	MIRL	REIL	USABLE LENGTHS		TAKE-OFF	WIDTH
			Threshold	Glide Slope		
14						98'
32						30m

TAKE-OFF		FOR FILING AS ALTERNATE	
All Rwys			
1 & 2 Eng	1000' - 3.0 km	A	700' - 2.0 km
3 & 4 Eng		C	NA
		D	