

MRLB/LIR
 DANIEL ODUBER QUIROS INTL

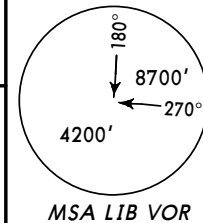
JEPPESEN
 10-2 13 MAY 11

LIBERIA, COSTA RICA

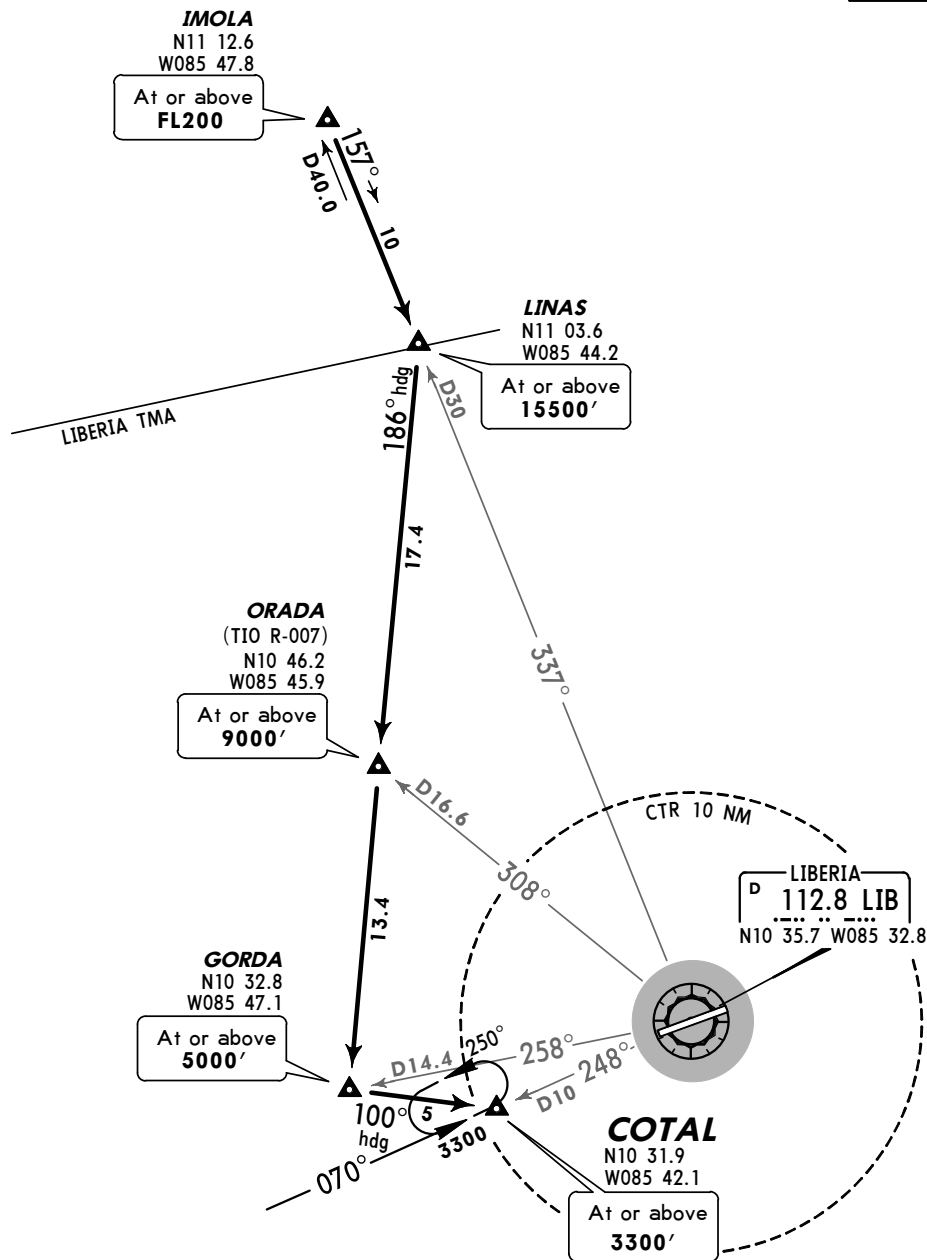
STAR

Apt Elev
 269'

Alt Set: hPa Trans level: FL200 Trans alt: 19000'
 1. Due to traffic, cross each waypoint at depicted altitudes.
 2. EXPECT approach authorization before crossing GORDA.



COTAL NORTH ARRIVAL
 [COTALN]



ROUTING

From IMOLA proceed on heading 157° to LINAS, then turn RIGHT heading 186° to GORDA, then turn LEFT heading 100° to COTAL.

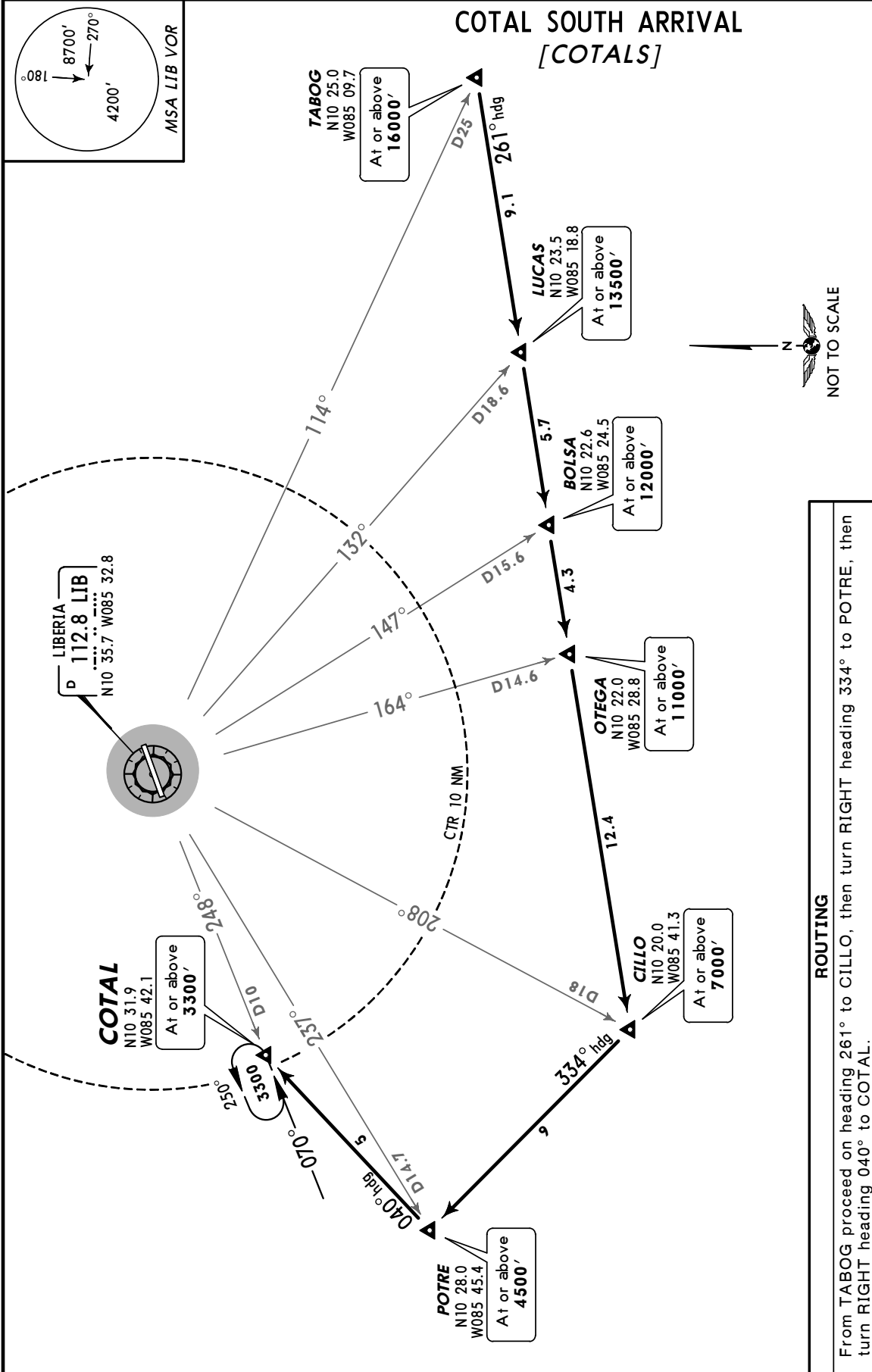
MRLB/LIR
DANIEL ODUBER QUIROS INTL

JEPPESEN
(10-2A) 13 MAY 11

LIBERIA, COSTA RICA

STAR

Apt Elev **269'** Alt Set: hPa Trans level: FL200 Trans alt: 19000'
 1. Due to traffic, cross each waypoint at depicted altitudes.
 2. EXPECT approach authorization before crossing POTRE.



ROUTING

From TABOG proceed on heading 261° to CILLO, then turn RIGHT heading 334° to POTRE, then turn RIGHT heading 040° to COTAL.

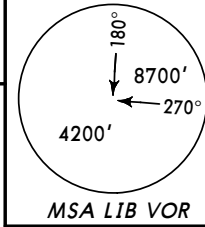
CHANGES: COTAL coordinates.

MRLB/LIR
DANIEL ODUBER QUIROS INTL

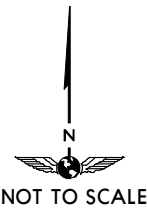
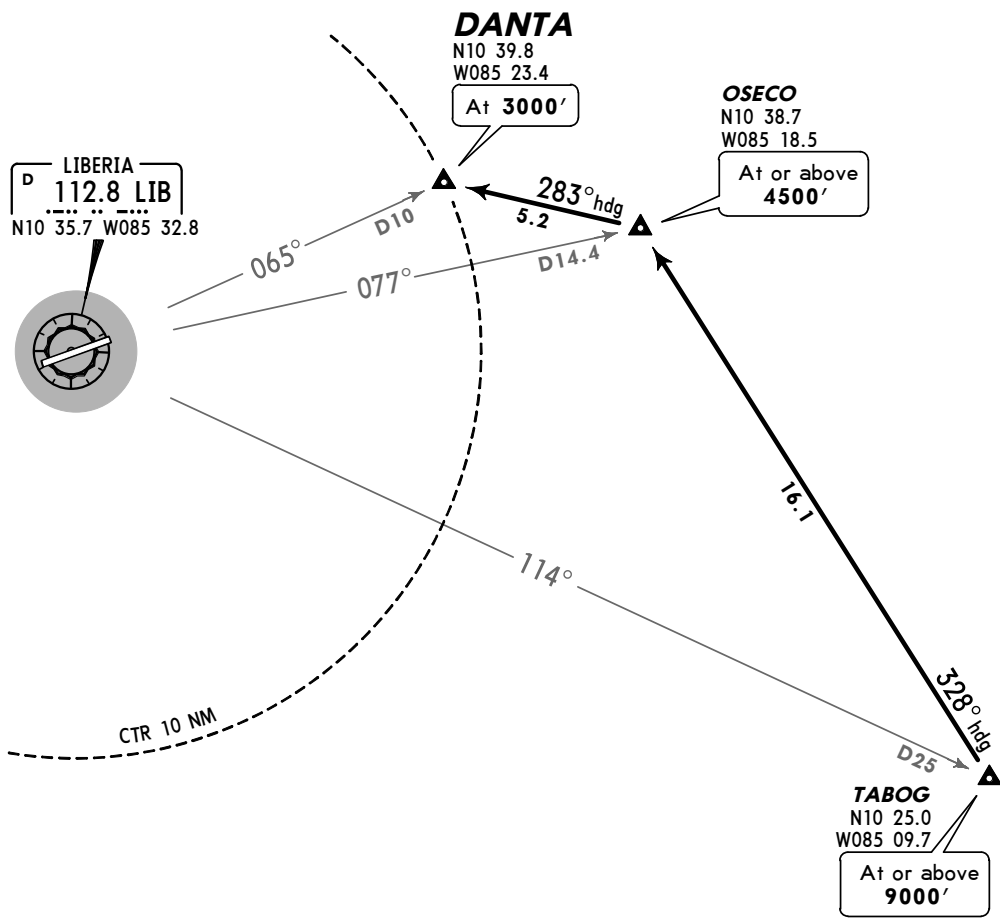
JEPPESEN
10-2B 15 JUN 07

LIBERIA, COSTA RICA
STAR

Apt Elev 269'	Alt Set: hPa Trans level: FL200 Trans alt: 19000' 1. Due to traffic, cross each waypoint at depicted altitudes. 2. EXPECT approach authorization before crossing OSECO.
--------------------------------	---



DANTA ARRIVAL



ROUTING

From TABOG proceed on heading 328° to OSECO, then turn LEFT heading 283° to DANTA.

MRLB/LIR
DANIEL ODUBER QUIROS INTL

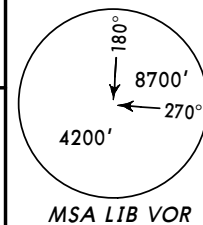


LIBERIA, COSTA RICA

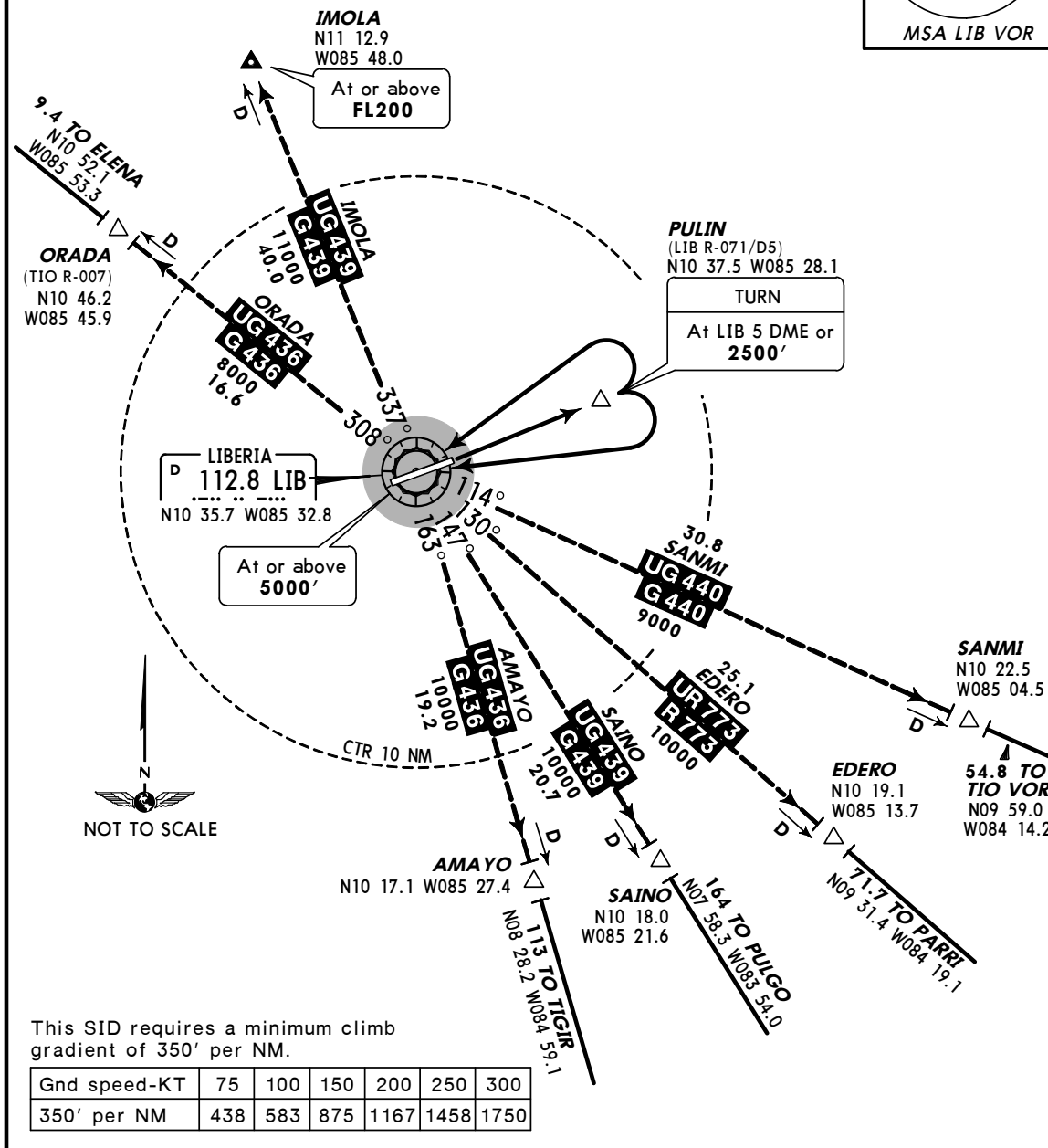
10-3 26 NOV 10

SID

*LIBERIA Approach (DEP) 119.8	Apt Elev 269'	Trans level: FL200 Trans alt: 19000'
---	-------------------------	---



CAPULIN TWO DEPARTURE
 (RWY 07)



Gnd speed-KT	75	100	150	200	250	300
350' per NM	438	583	875	1167	1458	1750

AIRWAY	INITIAL CLIMB
NORTH G/UG-436, G/UG-439	MAINTAIN runway heading with the maximum climb gradient possible to LIB 5 DME or 2500' , then climbing RIGHT turn to LIB. Leave LIB on the assigned route.
SOUTH G/UG-436, G/UG-439, G/UG-440, R/UR-773	MAINTAIN runway heading with the maximum climb gradient possible to LIB 5 DME or 2500' , then climbing LEFT turn to LIB. Leave LIB on the assigned route.

TRANSITIONS	
AMAYO (G/UG-436 SOUTH)	Climb and MAINTAIN 10000' , EXPECT higher altitude after AMAYO.
EDERO (R/UR-773)	Climb and MAINTAIN 12000' , EXPECT higher altitude after EDERO.
IMOLA (G/UG-439 NORTH)	Climb and MAINTAIN 18000' , EXPECT higher altitude before IMOLA.
ORADA (G/UG-436 NORTH)	Climb and MAINTAIN 11000' , EXPECT higher altitude after ORADA.
SAINO (G/UG-439 SOUTH)	Climb and MAINTAIN 11000' , EXPECT higher altitude after SAINO.
SANMI (G/UG-440)	Climb and MAINTAIN 9000' , EXPECT higher altitude after SANMI.

MRLB/LIR
DANIEL ODUBER QUIROS INTL

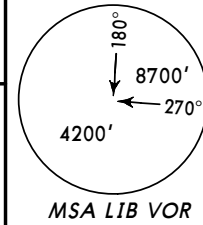
JEPPESEN

LIBERIA, COSTA RICA

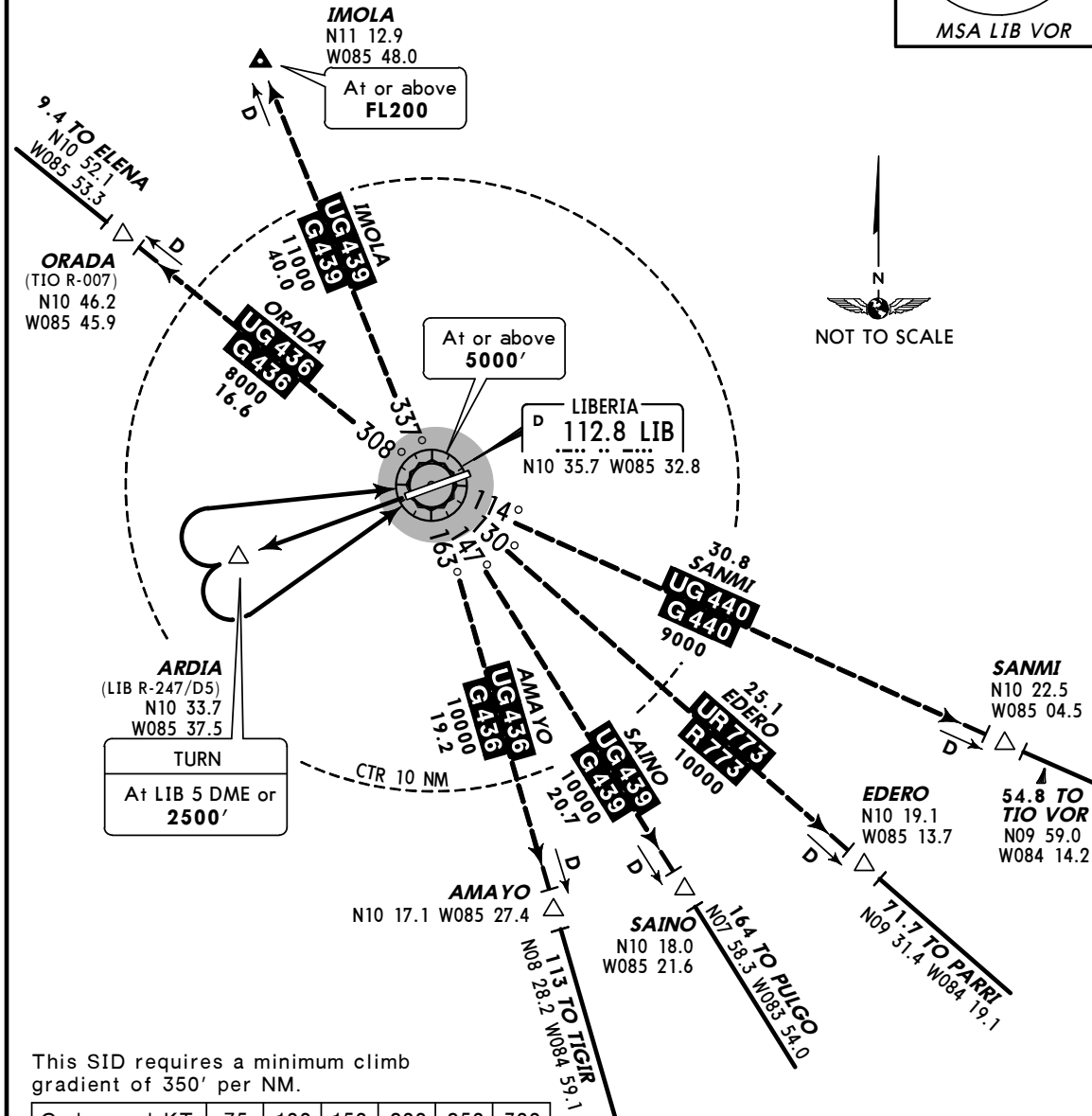
10-3A 26 NOV 10

SID

*LIBERIA Approach (DEP) 119.8	Apt Elev 269'	Trans level: FL200 Trans alt: 19000'
---	-------------------------	---



GUARDIA TWO DEPARTURE
 (RWY 25)



This SID requires a minimum climb gradient of 350' per NM.

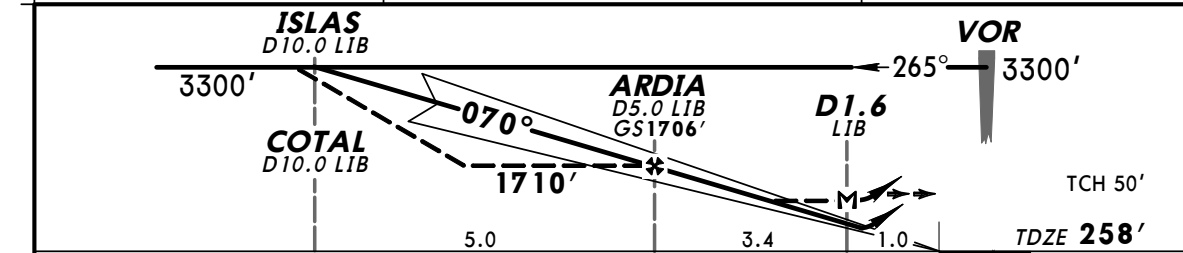
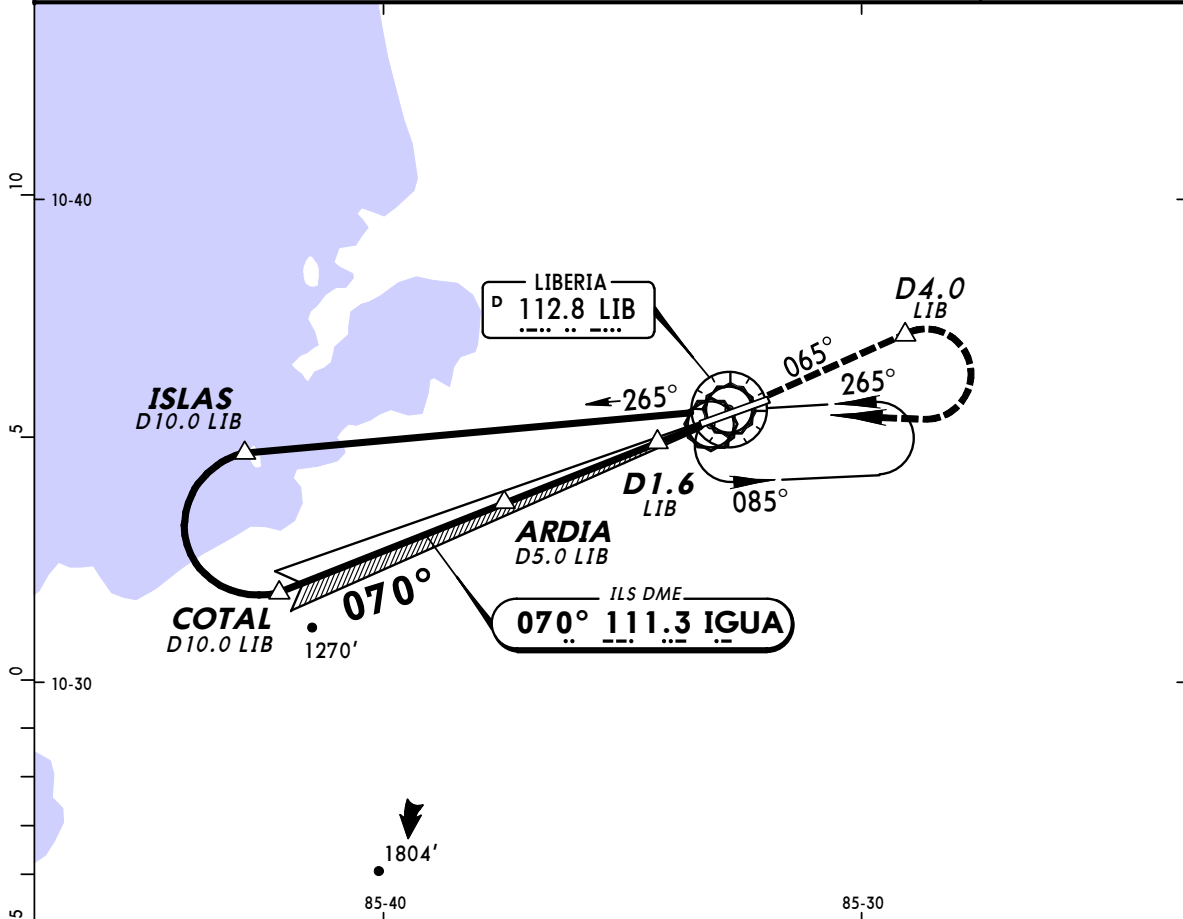
Gnd speed-KT	75	100	150	200	250	300
350' per NM	438	583	875	1167	1458	1750

AIRWAY	INITIAL CLIMB
NORTH G/UG-436, G/UG-439	MAINTAIN runway heading with the maximum climb gradient possible to LIB 5 DME or 2500', then climbing LEFT turn to LIB. Leave LIB on the assigned route.
SOUTH G/UG-436, G/UG-439, G/UG-440, R/UR-773	MAINTAIN runway heading with the maximum climb gradient possible to LIB 5 DME or 2500', then climbing RIGHT turn to LIB. Leave LIB on the assigned route.
TRANSITIONS	
AMAYO (G/UG-436 SOUTH)	Climb and MAINTAIN 10000' , EXPECT higher altitude after AMAYO.
EDERO (R/UR-773)	Climb and MAINTAIN 12000' , EXPECT higher altitude after EDERO.
IMOLA (G/UG-439 NORTH)	Climb and MAINTAIN 18000' , EXPECT higher altitude before IMOLA.
ORADA (G/UG-436 NORTH)	Climb and MAINTAIN 11000' , EXPECT higher altitude after ORADA.
SAINO (G/UG-439 SOUTH)	Climb and MAINTAIN 11000' , EXPECT higher altitude after SAINO.
SANMI (G/UG-440)	Climb and MAINTAIN 9000' , EXPECT higher altitude after SANMI.

MRLB/LIR
DANIEL ODUBER QUIROS INTL 12 JUN 09 (11-1)

LIBERIA, COSTA RICA
ILS DME Rwy 07

*LIBERIA Approach		*LIBERIA Tower		*Ground
119.8		118.8		121.7
LOC IGUA 111.3	Final Apch Crs 070°	GS ARDIA 1706' (1448')	ILS DA(H) 458' (200')	Apt Elev 269' TDZE 258'
MISSED APCH: Climb outbound on LIB VOR R-065 to D4.0 LIB, then turn RIGHT and return to LIB VOR and hold. Cross LIB VOR at 3300'.				
Alt Set: hPa	TDZ Elev: 9 hPa	Trans level: FL 200	Trans alt: 19000'	



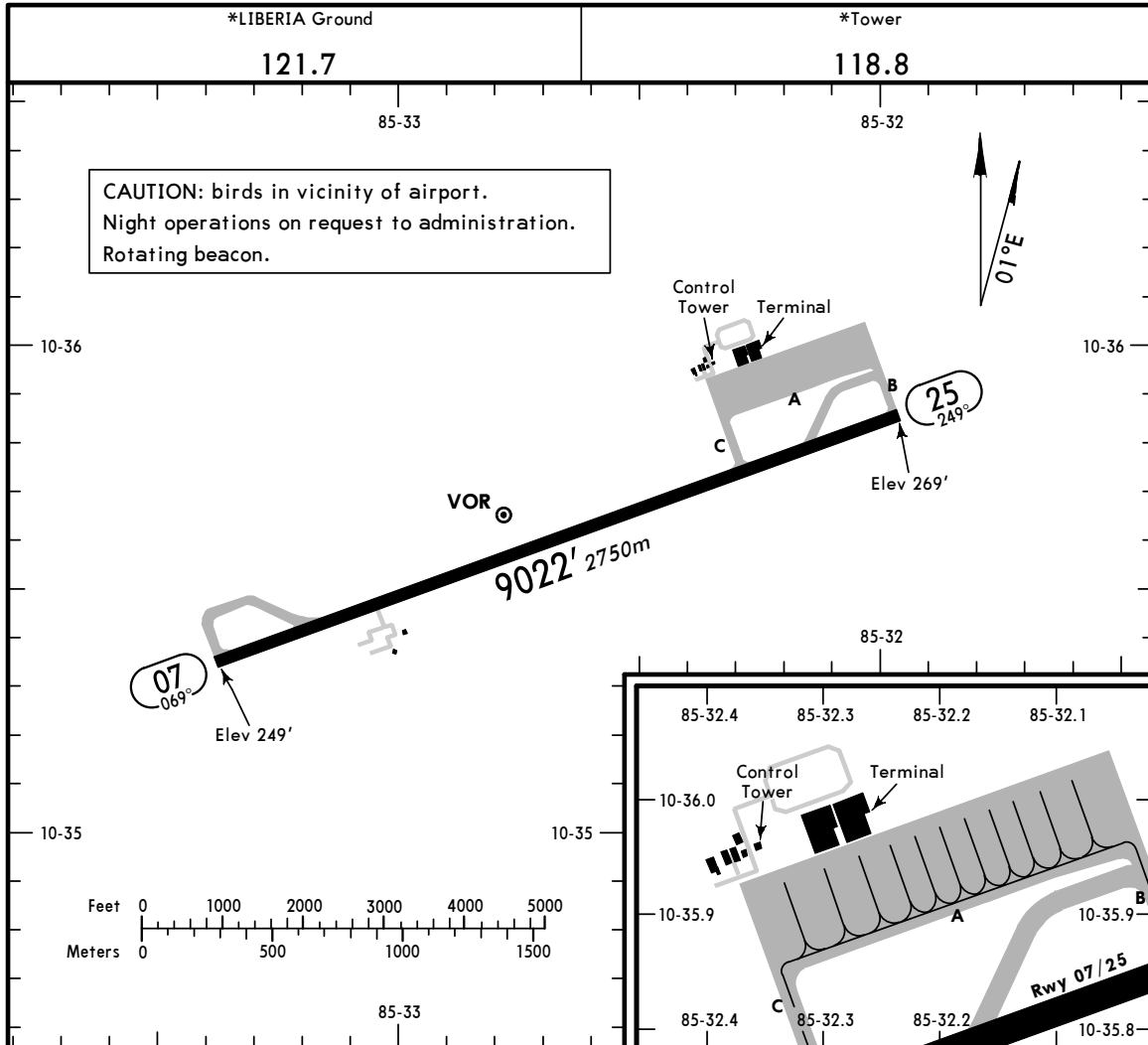
Gnd speed-Kts	70	90	100	120	140	160			
GS	3.00°	377	484	538	646	753	861		
MAP at D1.6 LIB or ARDIA to MAP	3.4	2:55	2:16	2:02	1:42	1:27	1:16	REIL PAPI-L	LIB on 112.8 R-065 D4.0 LIB

STRAIGHT-IN LANDING RWY 07		CEILING REQUIRED	CIRCLE-TO-LAND
ILS DA(H) 458' (200')		LOC (GS out) MDA(H) 660' (402')	
CEILING-VISIBILITY			
A			
B	200' - 1.4 km	400' - 1.9 km	NA
C			
D	200' - 1.6 km	400' - 2.3 km	

MRLB/LIR
 Apt Elev **269'**
 N10 35.6 W085 32.7

JEPPESEN
 12 JUN 09 **(11-1)**

LIBERIA, COSTA RICA
 DANIEL ODUBER QUIROS INTL



ADDITIONAL RUNWAY INFORMATION

RWY	HIRL REIL PAPI-L (angle 3.0°)	USABLE LENGTHS			
		Threshold	Glide Slope	TAKE-OFF	WIDTH
07	HIRL REIL PAPI-L (angle 3.0°)		7797' 2377m		148'
25	HIRL				45m

TAKE-OFF		FOR FILING AS ALTERNATE	
All Rwys		VOR DME ARC Rwy 07 VOR DME Rwy 25	Other
1 & 2 Eng	1000' - 4.0 km	A	900' - 3.2 km
		B	
		C	
3 & 4 Eng		D	

MRLB/LIR



LIBERIA, COSTA RICA

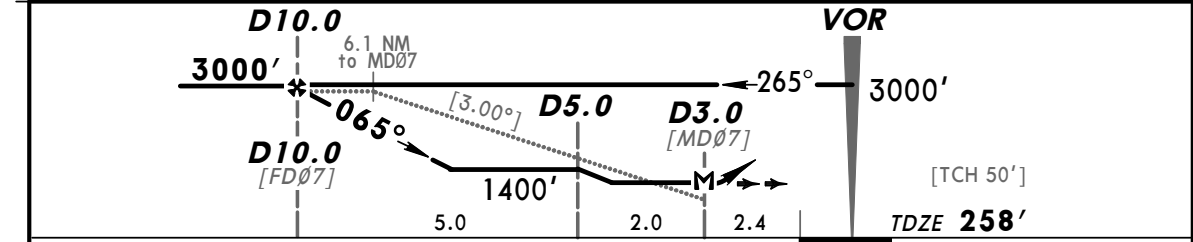
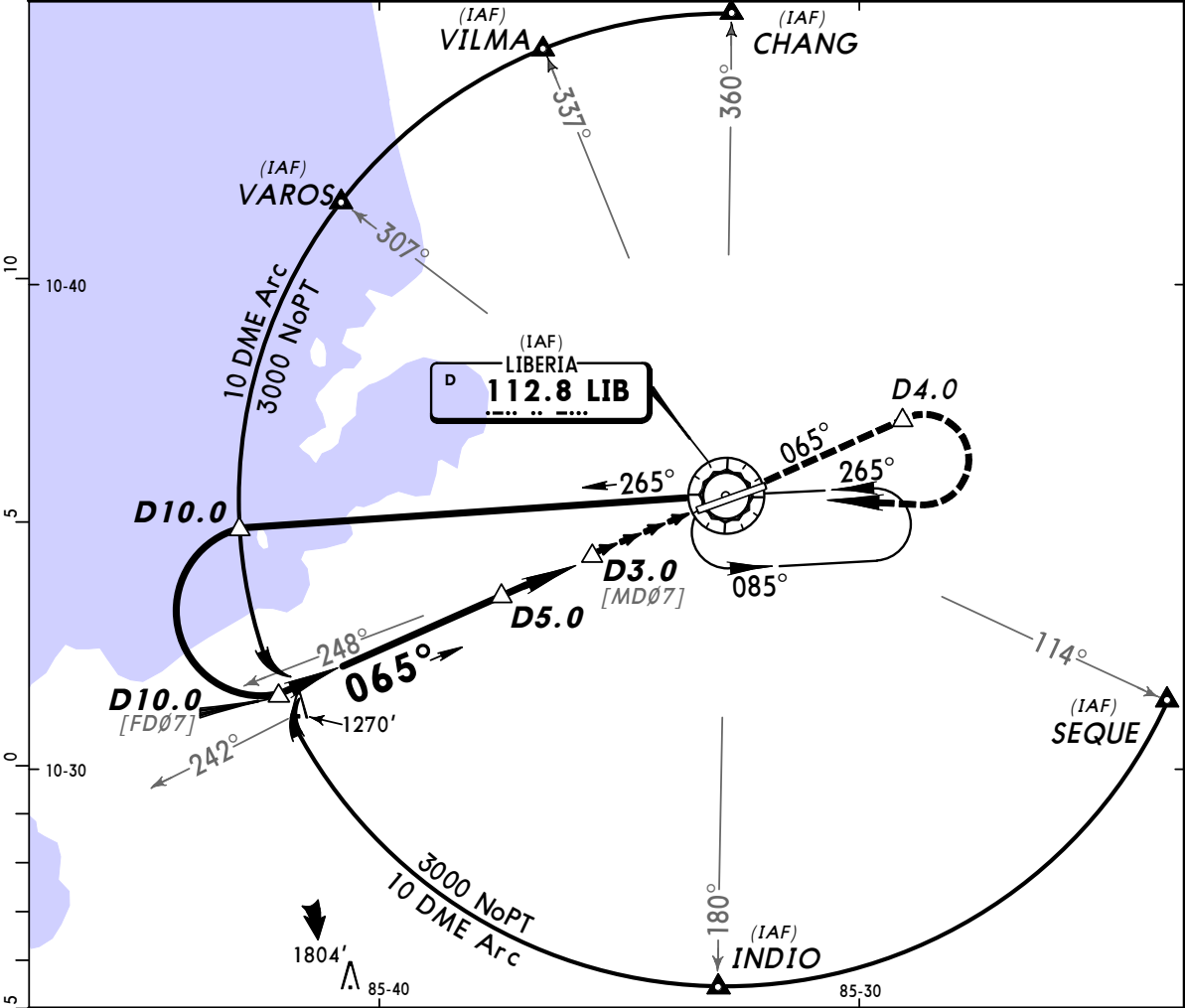
23 JUL 10 (13-1) Eff 29 Jul

VOR DME

DANIEL ODUBER QUIROS INTL

ARC or GPS Rwy 07

*LIBERIA Approach 119.8		*LIBERIA Tower 118.8			*Ground 121.7
VOR LIB 112.8	Final Apch Crs 065°	Minimum Alt D10.0 3000' (2742')	MDA(H) 1070' (812')	Apt Elev 269' TDZE 258'	<p>MSA LIB VOR</p>
MISSED APCH: Climb outbound on LIB VOR R-065 to D4.0, then turn RIGHT and return to LIB VOR and hold. Cross LIB VOR at 3000'.					
Alt Set: hPa		TDZ Elev: 9 hPa	Trans level: FL 200	Trans alt: 19000'	



Gnd speed-Kts	70	90	100	120	140	160	REIL PAPI-L	LIB on 112.8 R-065	D4.0
Descent angle [3.00°]	372	478	531	637	743	849			
MAP at D3.0									
FAF to MAP	7.0	6:00	4:40	4:12	3:30	3:00			

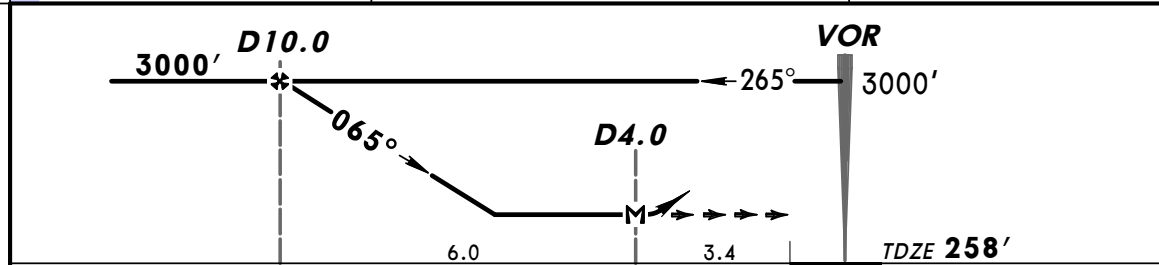
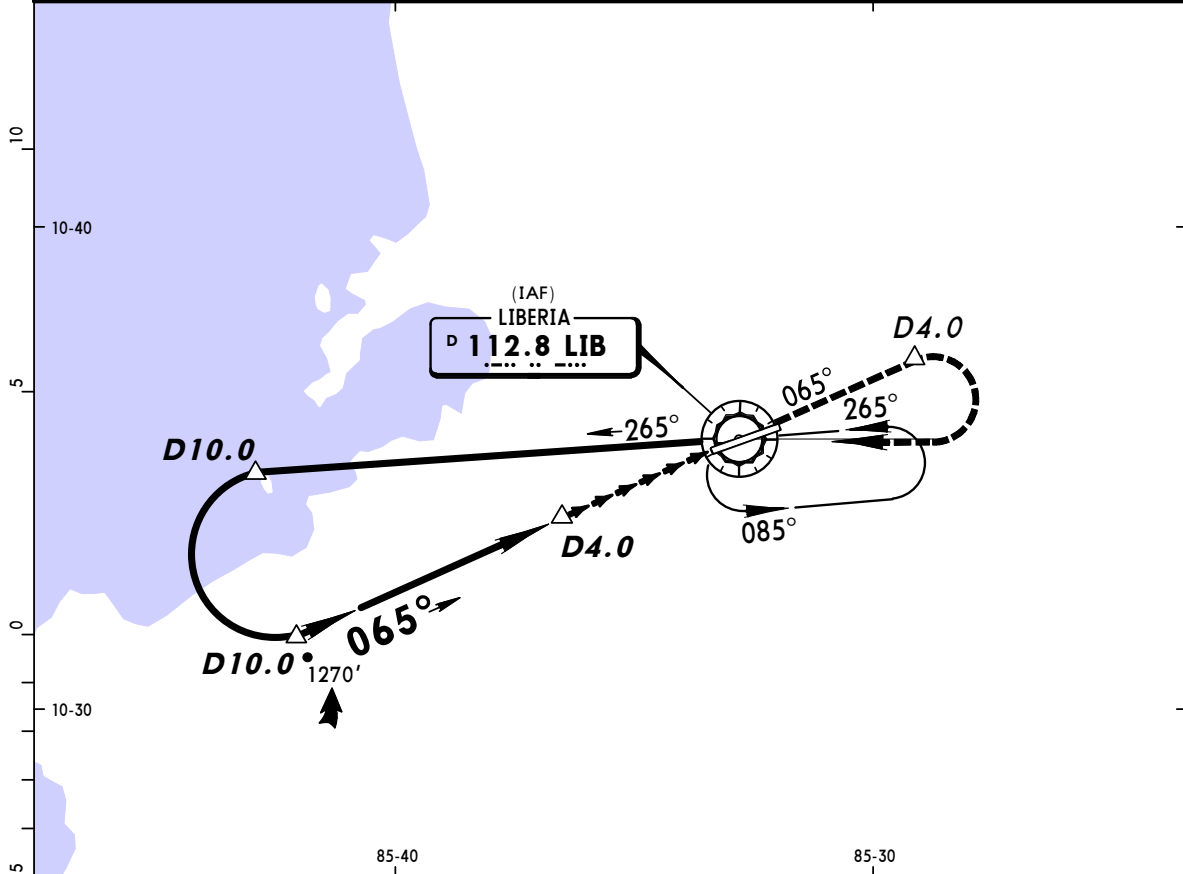
STRAIGHT-IN LANDING RWY 07 MDA(H) 1070' (812')		CIRCLE-TO-LAND	
--	--	----------------	--

PANS OPS	A		A	
	B	3.0 km	B	NA
	C		C	
	D	3.2 km	D	

MRLB/LIR
DANIEL ODUBER QUIROS INTL

JEPPESEN LIBERIA, COSTA RICA
 7 OCT 05 (13-2)
VOR Rwy 07

*LIBERIA Approach 119.8		*LIBERIA Tower 118.8		*Ground 121.7	
VOR LIB 112.8	Final Apch Crs 065°	Minimum Alt D10.0 3000' (2742')	MDA(H) 1580' (1322')	Apt Elev 269' TDZE 258'	
MISSED APCH: Climb outbound on LIB VOR R-065 to D4.0, then turn RIGHT and return to LIB VOR at or above 3000'. Join holding pattern or continue outbound on LIB VOR R-265 to initiate another approach.					
Alt Set: hPa	TDZ Elev: 9 hPa	Trans level: FL 200	Trans alt: 19000'	MSA LIB VOR	



Gnd speed-Kts	70	90	100	120	140	160	REIL PAPI-L	LIB on 112.8 R-065	D4.0
MAP at D4.0									
FAF to MAP	6.0	5:09	4:00	3:36	3:00	2:34			

STRAIGHT-IN LANDING RWY 07				CIRCLE-TO-LAND			
MDA(H) 1580' (1322')							
A	2.0 km			A	NA		
B	2.4 km			B			
C	4.9 km			C			
D				D			

PANS OPS

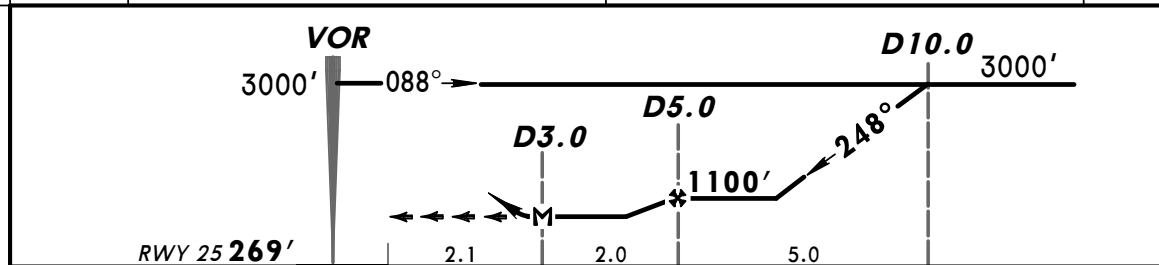
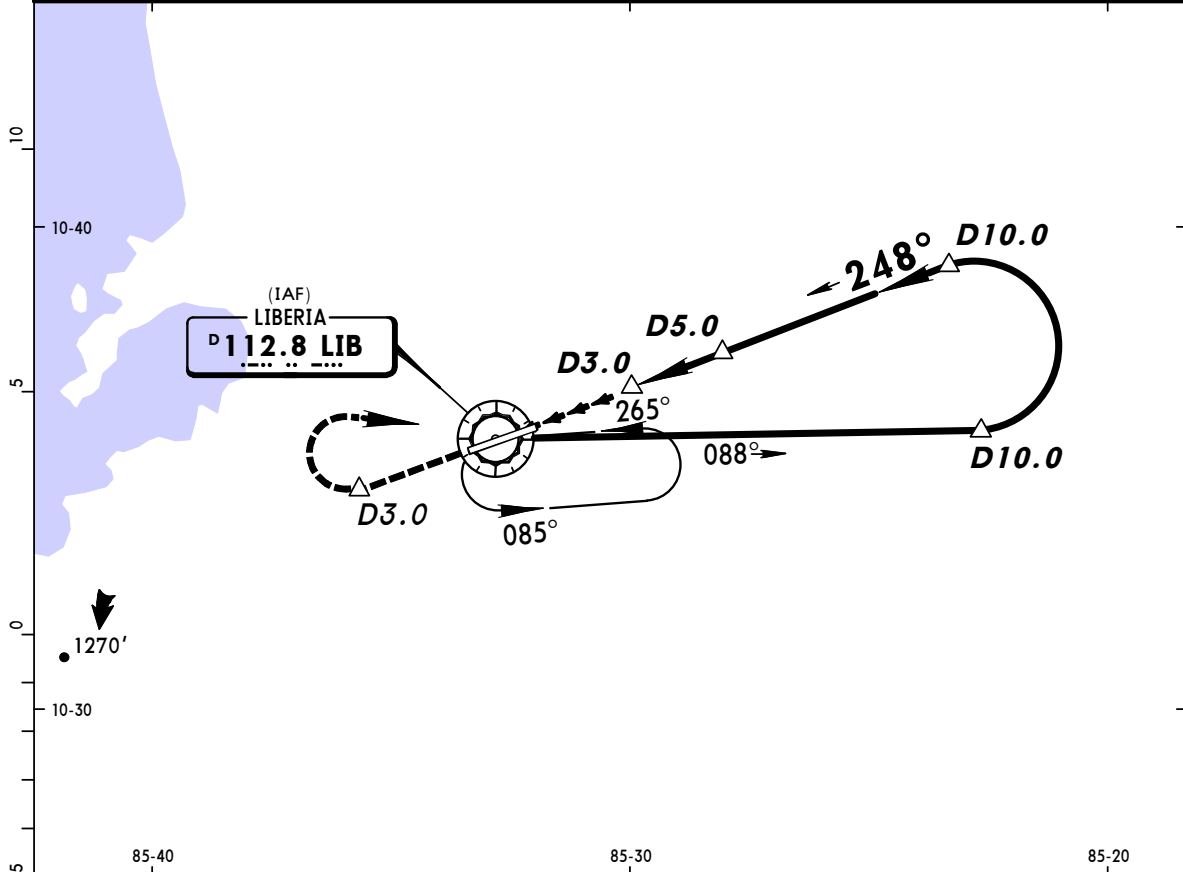
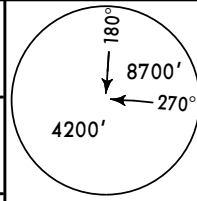
MRLB/LIR
DANIEL ODUBER QUIROS INTL



LIBERIA, COSTA RICA
VOR DME Rwy 25

7 OCT 05 (13-3)

*LIBERIA Approach 119.8		*LIBERIA Tower 118.8		*Ground 121.7	
VOR LIB 112.8	Final Apch Crs 248°	Minimum Alt D5.0 1100' (831')	MDA(H) 870' (601')	Apt Elev 269' Rwy 25 269'	
MISSED APCH: Maintain runway heading until 1000' and D3.0, turn RIGHT climbing to LIB VOR to initiate new approach or remain in the holding. Cross LIB VOR at 3000' or above.					
Alt Set: hPa		Rwy Elev: 10 hPa		Trans level: FL 200	
				Trans alt: 19000'	
					MSA LIB VOR



Gnd speed-Kts	70	90	100	120	140	160	1000' and D3.0 ↑ and RT	LIB 112.8
MAP at D3.0								
D5.0 to MAP	2.0	1:43	1:20	1:12	1:00	0:51		

STRAIGHT-IN LANDING RWY 25		CIRCLE-TO-LAND	
MDA(H) 870' (601')			

A	1.9 km	A	NA
B			
C			
D			

CHANGES: Lighting.