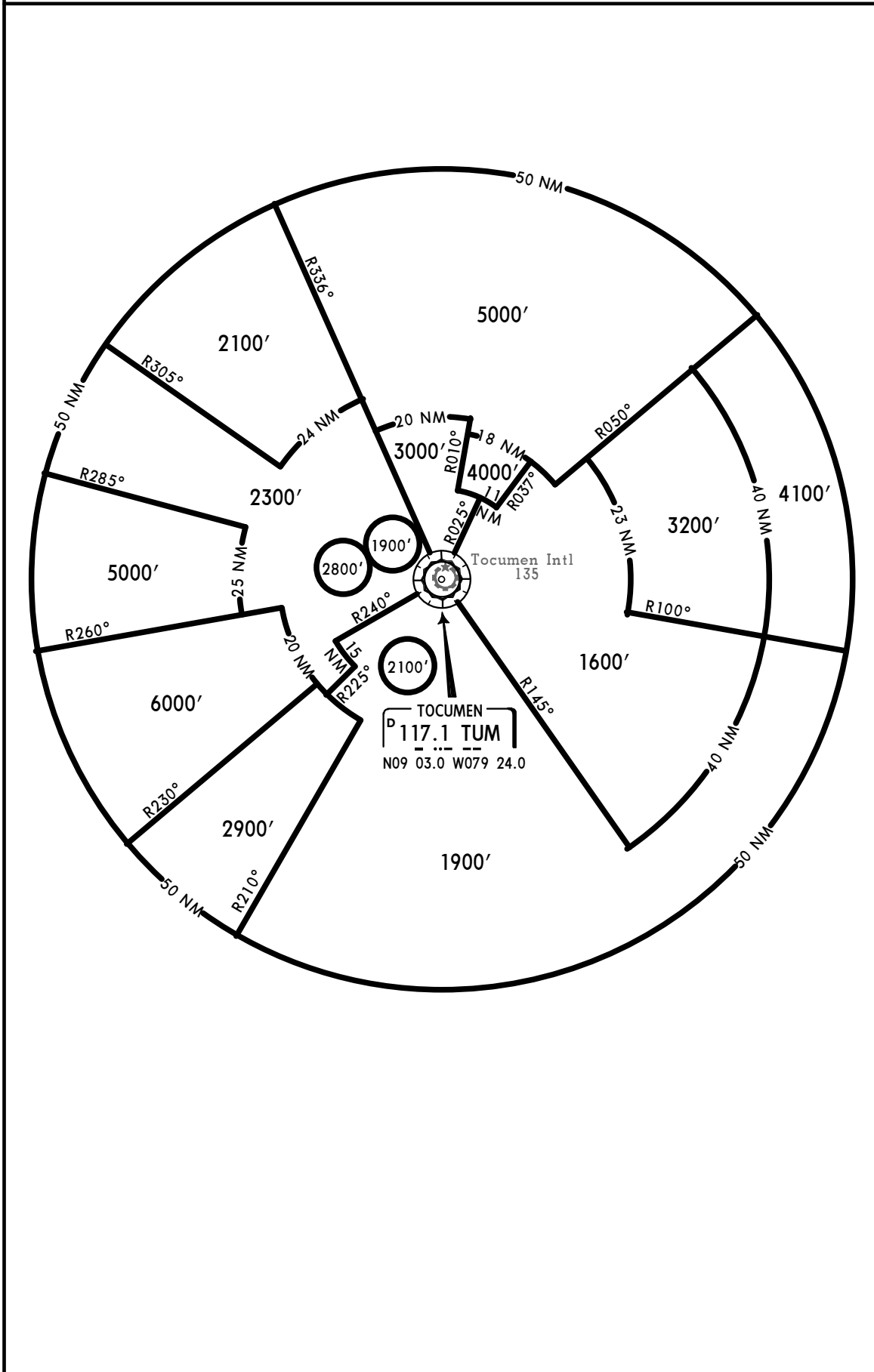


IFR MINIMUM VECTOR ALTITUDE CLEARANCE

(Does not raise Airway MEA)



MPTO/PTY
TOCUMEN INTL

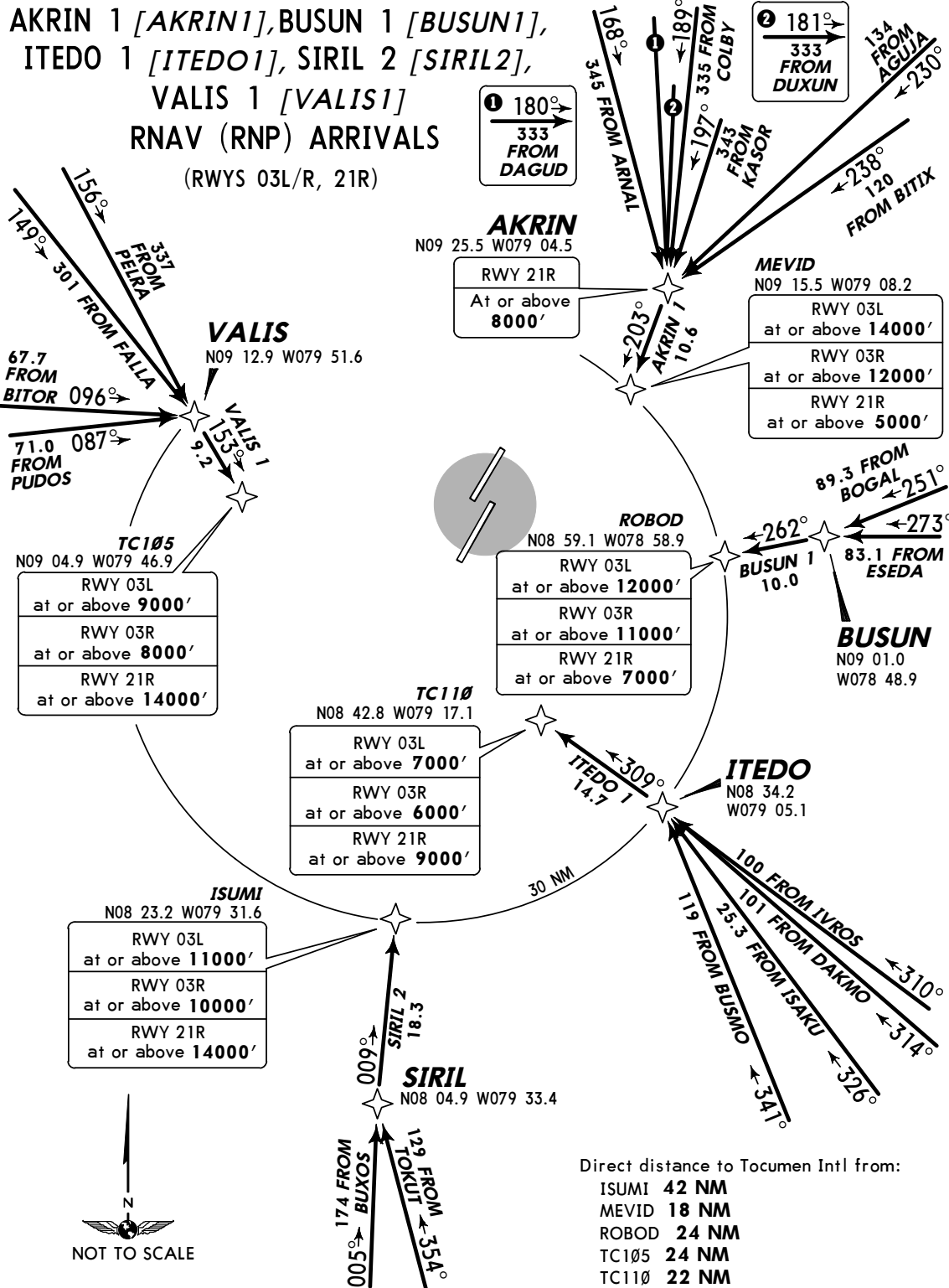


PANAMA CITY, PANAMA

RNAV STAR

1 MAR 13 10-2

ATIS 127.7 Apt Elev 135' Alt Set: hPa Trans level: By ATC Trans alt: 18000'
 Special aircraft and aircrew authorization required.



STAR	ROUTING
AKRIN 1	From AKRIN track 203° to MEVID.
BUSUN 1	From BUSUN track 262° to ROBOD.
ITEDO 1	From ITEDO track 309° to TC110.
SIRIL 2	From SIRIL track 009° to ISUMI.
VALIS 1	From VALIS track 153° to TC105.

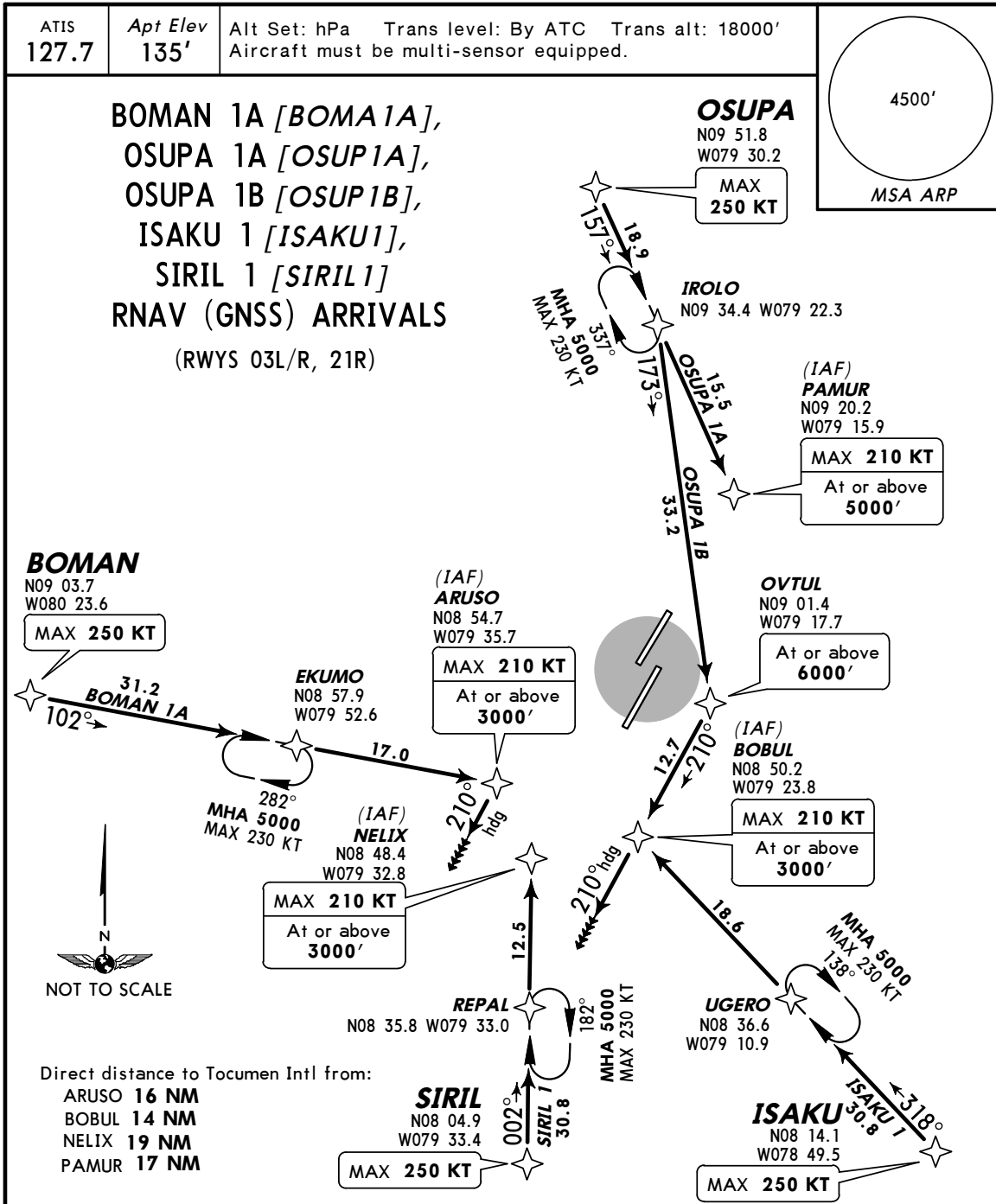
LANDING
 Execute RNAV (RNP) Y RWY 03L or RNAV (RNP) RWY 03R or RNAV (RNP) Z RWY 21R.

MPTO/PTY
TOCUMEN INTL

JEPPESSEN
 1 MAR 13 **(10-2A)**

PANAMA CITY, PANAMA

RNAV STAR



STAR	ROUTING	ALTITUDE
BOMAN 1A	From BOMAN track 102° to ARUSO. Execute RNAV (GNSS) RWY 03L or RNAV (GNSS) ILS TRANSITION RWY 03R procedure. If approach clearance is not received prior to ARUSO, MAINTAIN last altitude then turn RIGHT heading 210° and EXPECT RADAR vectors.	MAINTAIN at or above 3000'
OSUPA 1A	From OSUPA track 157° to PAMUR. Execute RNAV (GNSS) RWY 21R procedure.	MAINTAIN at or above 5000'
OSUPA 1B	From OSUPA track 157° to IROLO then turn RIGHT track 173° to OVTUL, then turn RIGHT track 210° to BOBUL. Execute RNAV (GNSS) RWY 03L or RNAV (GNSS) ILS TRANSITION RWY 03R procedure. If approach clearance is not received prior to BOBUL, MAINTAIN last altitude and heading 210° and EXPECT RADAR vectors.	MAINTAIN at or above 3000'
ISAKU 1	From ISAKU track 318° to BOBUL. Execute RNAV (GNSS) RWY 03L or RNAV (GNSS) ILS TRANSITION RWY 03R procedure. If approach clearance is not received prior to BOBUL, MAINTAIN last altitude and heading 210° and EXPECT RADAR vectors.	MAINTAIN at or above 3000'
SIRIL 1	From SIRIL track 002° to NELIX. Execute RNAV (GNSS) RWY 03L or RNAV (GNSS) ILS TRANSITION RWY 03R procedure.	MAINTAIN at or above 3000'

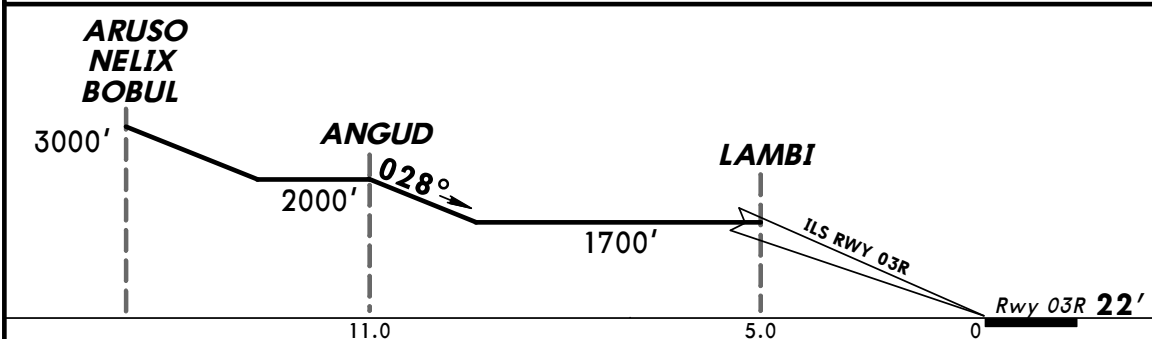
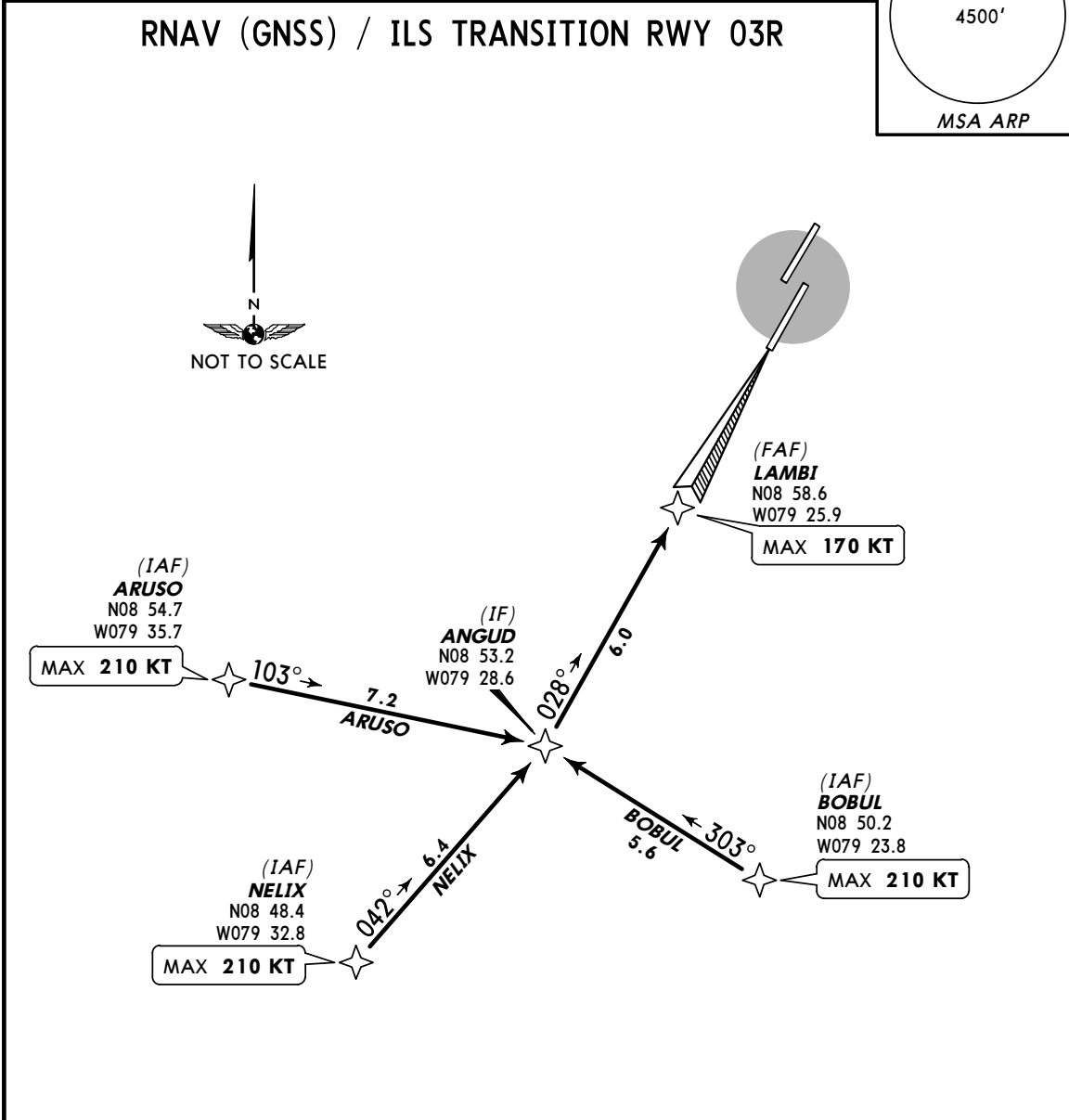
MPTO/PTY
 TOCUMEN INTL

JEPPESEN
 12 OCT 12 (10-2B)

PANAMA CITY, PANAMA

RNAV STAR

ATIS 127.7	Apt Elev 135'	Alt Set: hPa Trans level: By ATC Trans alt: 18000' Aircraft must be multi-sensor equipped.	
RNAV (GNSS) / ILS TRANSITION RWY 03R			



ROUTE DESIGNATOR	ROUTING
ARUSO	Track 103° until ANGUD. Proceed on track 028° direct to LAMBI. Continue ILS 03R approach.
BOBUL	Track 303° until ANGUD. Proceed on track 028° direct to LAMBI. Continue ILS 03R approach.
NELIX	Track 042° until ANGUD. Proceed on track 028° direct to LAMBI. Continue ILS 03R approach.

CHANGES: Chart reindexed.

MPTO/PTY
 TOCUMEN INTL

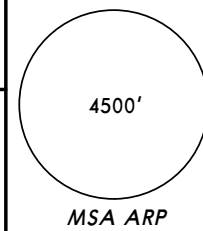
JEPPESEN
 22 JAN 10 (10-3)

PANAMA CITY, PANAMA

RNAV SID

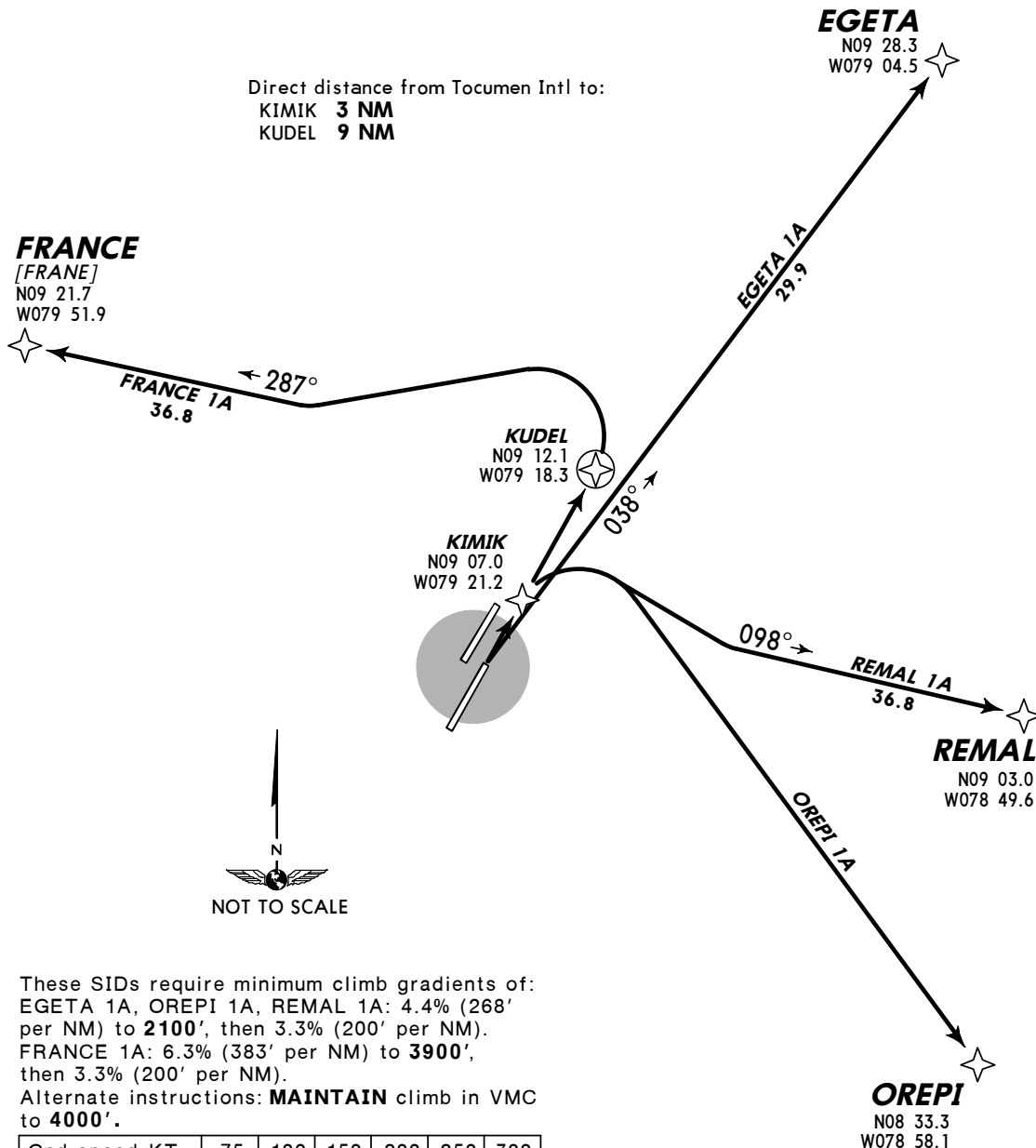
Apt Elev
 135'

Trans level: FL180 Trans alt: 18000'
 Aircraft must be multi-sensor equipped.



EGETA 1A, FRANCE 1A, OREPI 1A,
 REMAL 1A RNAV (GNSS) DEPARTURES
 (RWY 03R)

Direct distance from Tocumen Intl to:
 KIMIK 3 NM
 KUDEL 9 NM



These SIDs require minimum climb gradients of:
 EGETA 1A, OREPI 1A, REMAL 1A: 4.4% (268'
 per NM) to 2100', then 3.3% (200' per NM).
 FRANCE 1A: 6.3% (383' per NM) to 3900',
 then 3.3% (200' per NM).
 Alternate instructions: **MAINTAIN** climb in VMC
 to 4000'.

Gnd speed-KT	75	100	150	200	250	300
3.3% V/V (fpm)	251	334	501	668	835	1003
4.4% V/V (fpm)	334	446	668	891	1114	1337
6.3% V/V (fpm)	479	638	957	1276	1595	1914

SID	INITIAL CLIMB	ALTITUDE
EGETA 1A	Track 038° to EGETA.	MAINTAIN 5000' until instructed by ATC
FRANCE 1A	Direct to KUDEL, then turn LEFT track 287° to FRANCE.	
OREPI 1A	Direct to KIMIK, then turn RIGHT to OREPI.	
REMAL 1A	Direct to KIMIK, then turn RIGHT track 098° to REMAL.	

MPTO/PTY
 TOCUMEN INTL

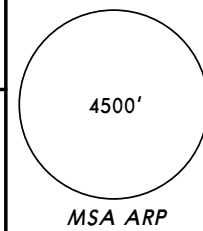
JEPPESEN
 22 JAN 10 (10-3A)

PANAMA CITY, PANAMA

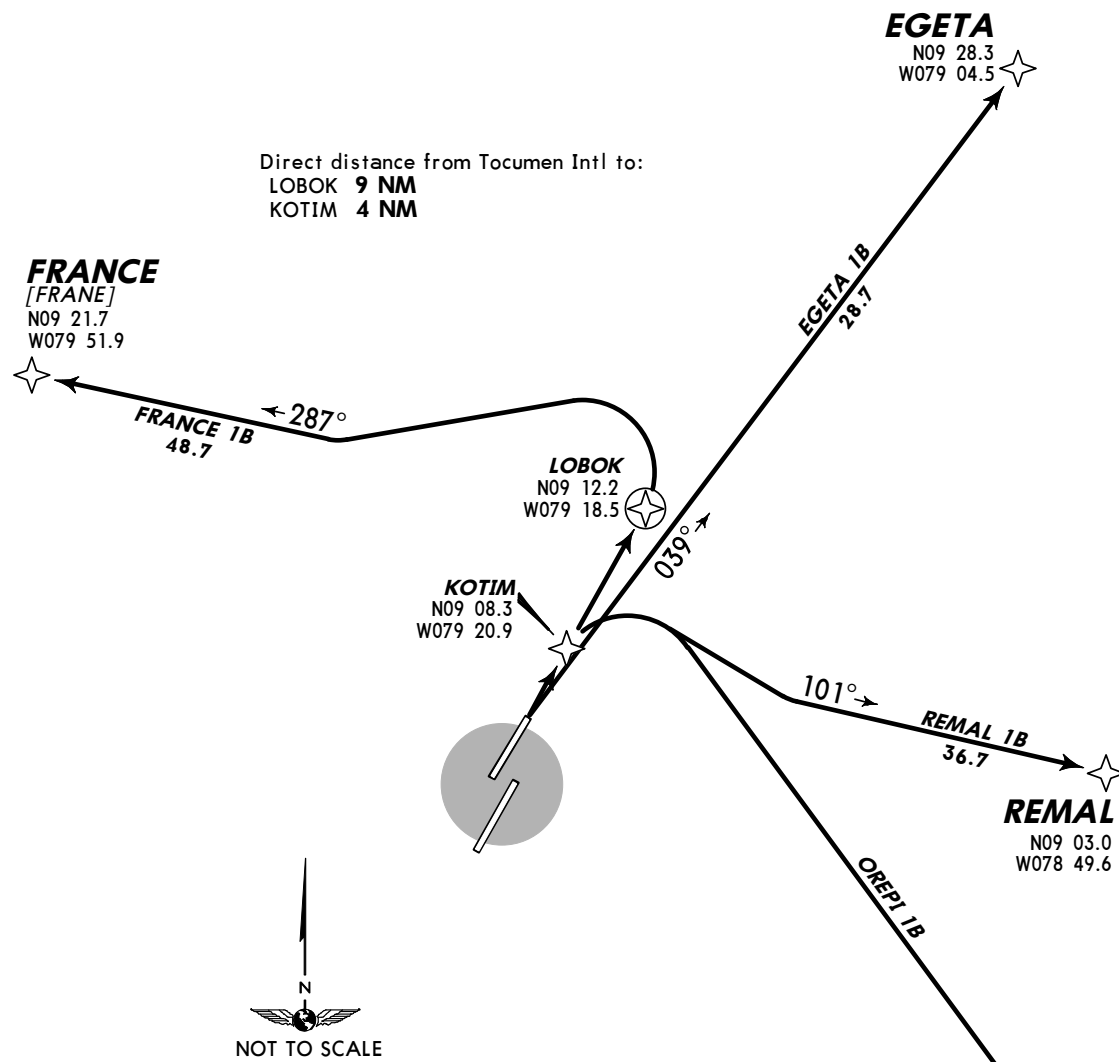
RNAV SID

Apt Elev
 135'

Trans level: FL180 Trans alt: 18000'
 Aircraft must be multi-sensor equipped.



**EGETA 1B, FRANCE 1B, OREPI 1B,
 REMAL 1B RNAV (GNSS) DEPARTURES
 (RWY 03L)**



These SIDs require minimum climb gradients of:
 EGETA 1B, OREPI 1B, REMAL 1B: 4.9% (298'
 per NM) to 2100', then 3.3% (200' per NM).
 FRANCE 1B: 7.0% (426' per NM) to 3900',
 then 3.3% (200' per NM).
 Alternate instructions: **MAINTAIN** climb in VMC
 to 4000'.

Gnd speed-KT	75	100	150	200	250	300
3.3% V/V (fpm)	251	334	501	668	835	1003
4.9% V/V (fpm)	372	496	744	992	1241	1489
7.0% V/V (fpm)	532	709	1063	1418	1772	2127

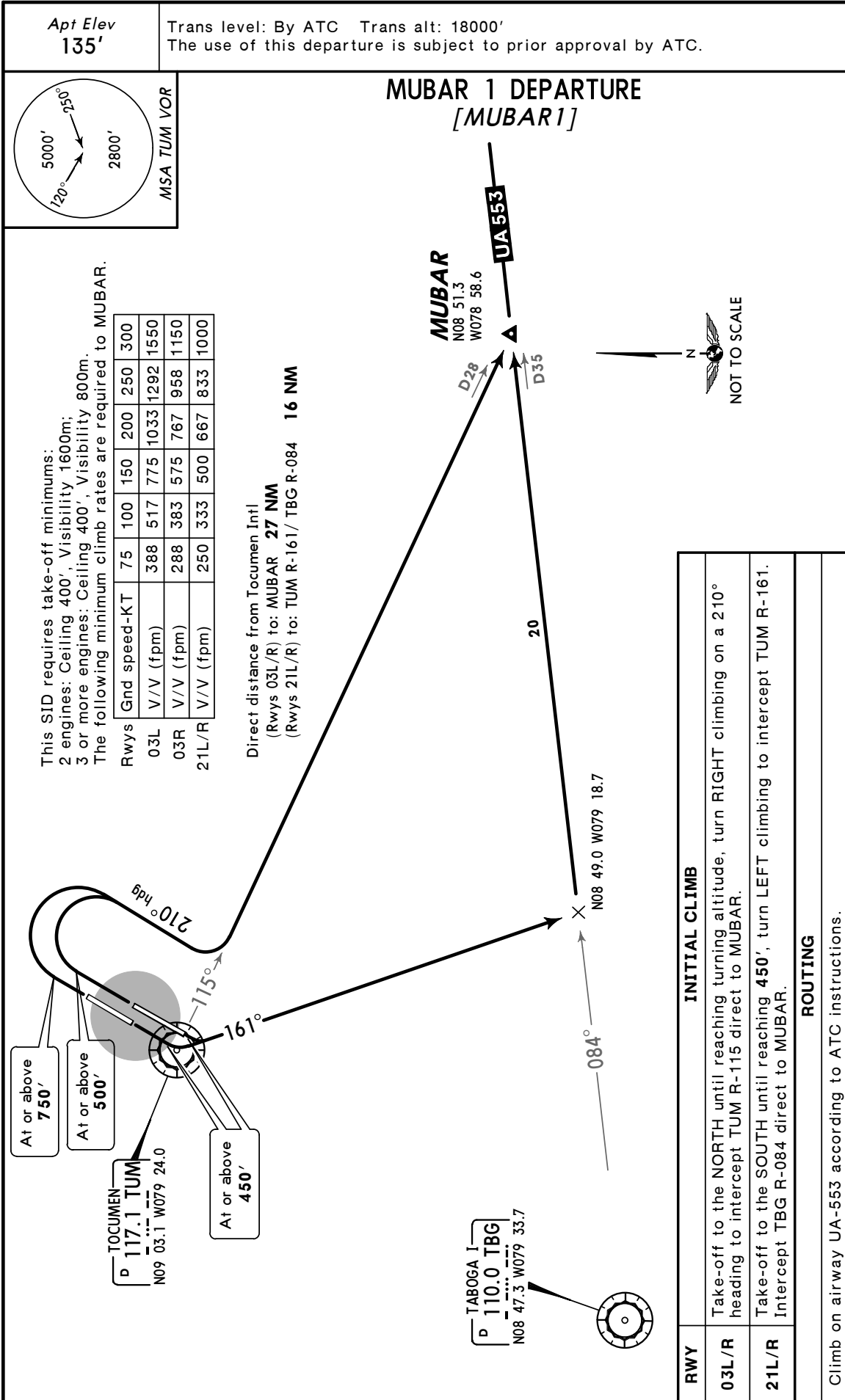
SID	INITIAL CLIMB	ALTITUDE
EGETA 1B	Track 039° to EGETA.	MAINTAIN 5000' until instructed by ATC
FRANCE 1B	Direct to LOBOK, then turn LEFT track 287° to FRANCE.	
OREPI 1B	Direct to KOTIM, then turn RIGHT to OREPI.	
REMAL 1B	Direct to KOTIM, then turn RIGHT track 101° to REMAL.	

MPTO/PTY
TOCUMEN INTL

JEPPESEN
 1 MAR 13 (10-3B)

PANAMA CITY, PANAMA

SID



MPTO/PTY
TOCUMEN INTL

JEPPESEN
 1 MAR 13 **10-3C**

PANAMA CITY, PANAMA

RNAV SID

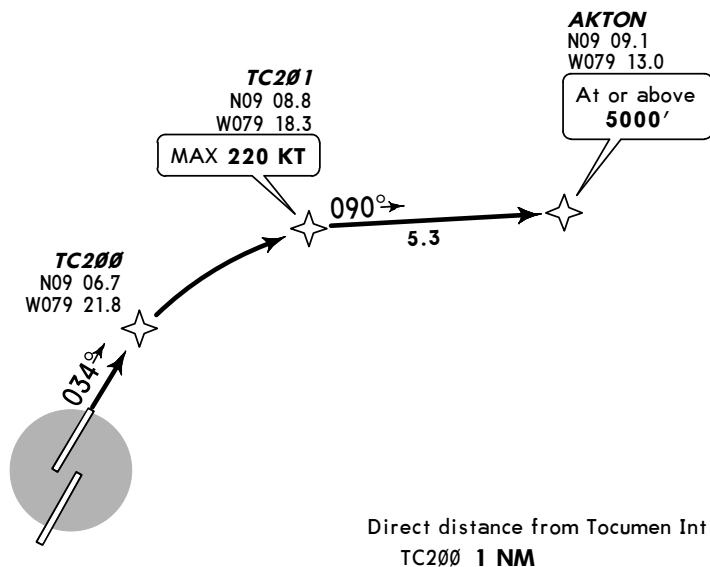
Apt Elev
135'

Trans level: By ATC Trans alt: 18000'
1. RF and GPS required.
2. RNP 0.30.
 3. Special aircraft and aircrew authorization required.

RNAV (RNP) DEPARTURE

[RNP03L]

(RWY 03L)



This SID requires take-off minimums:
 Ceiling 700', Visibility 4000m, with minimum climb
 gradient of 380' per NM to 900', then 329' per NM.

Gnd speed-KT	75	100	150	200	250	300
329' per NM	411	548	822	1095	1370	1644
380' per NM	475	633	950	1267	1583	1900



INITIAL CLIMB

Climb on track 034° to TC200, then via depicted route.

MPTO/PTY
 TOCUMEN INTL

JEPPESEN
 1 MAR 13 (10-3D)

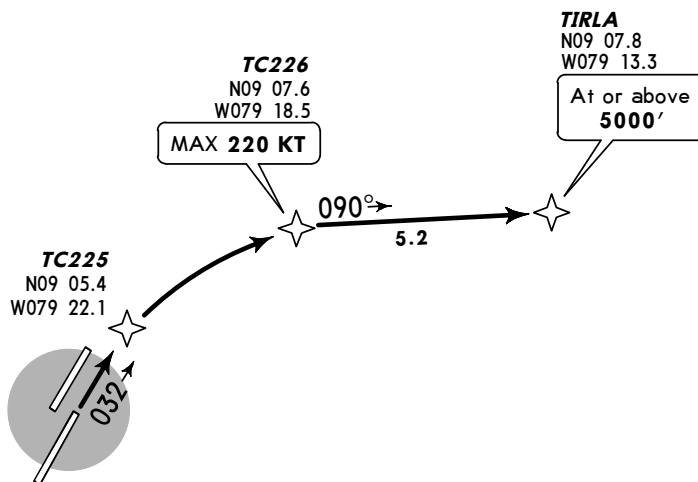
PANAMA CITY, PANAMA

RNAV SID

Apt Elev
 135'

Trans level: By ATC Trans alt: 18000'
 1. RF and GPS required.
 2. RNP 0.30.
 3. Special aircraft and aircrew authorization required.

RNAV (RNP) DEPARTURE
[RNP03R]
 (RWY 03R)



Direct distance from Tocumen Intl to:
 TC225 1 NM

This SID requires take-off minimums:
 Ceiling 300', Visibility 2000m, with minimum climb
 gradient of 384' per NM to 400', then 318' per NM.

Gnd speed-KT	75	100	150	200	250	300
318' per NM	398	530	795	1080	1325	1590
384' per NM	480	630	960	1280	1600	1920



INITIAL CLIMB

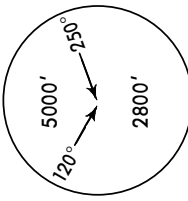
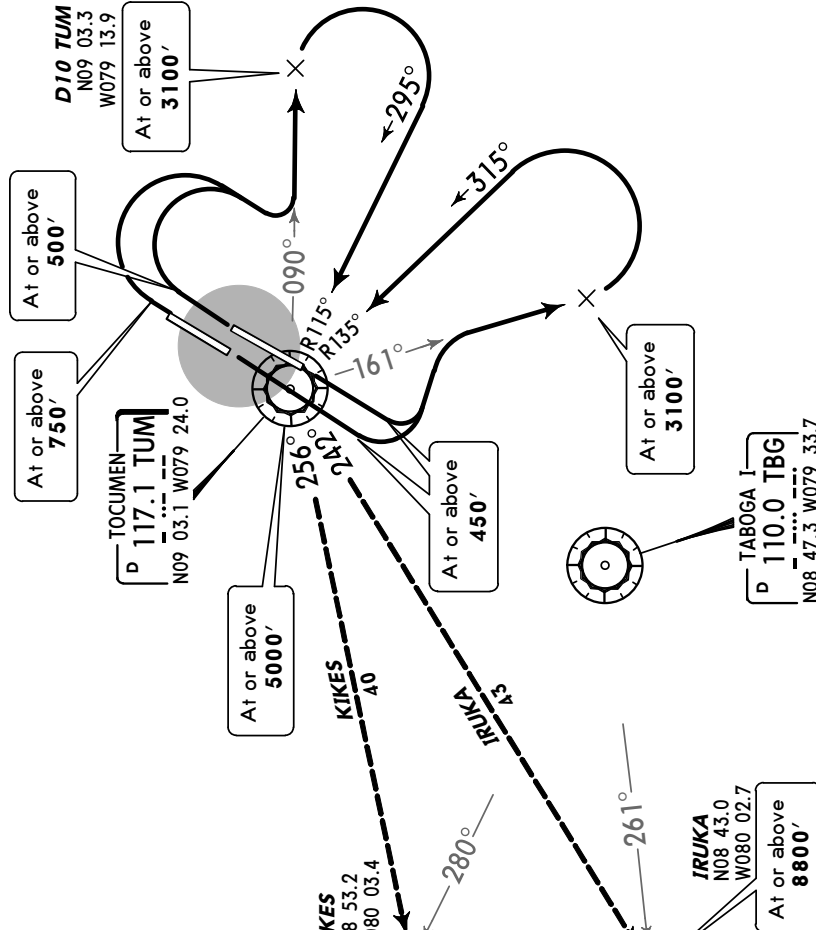
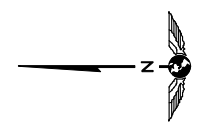
Climb on track 032° to TC225, then via depicted route.

MPTO/PTY
TOCUMEN INTL

JEPPESEN
 1 MAR 13 **(10-3E)**

PANAMA CITY, PANAMA

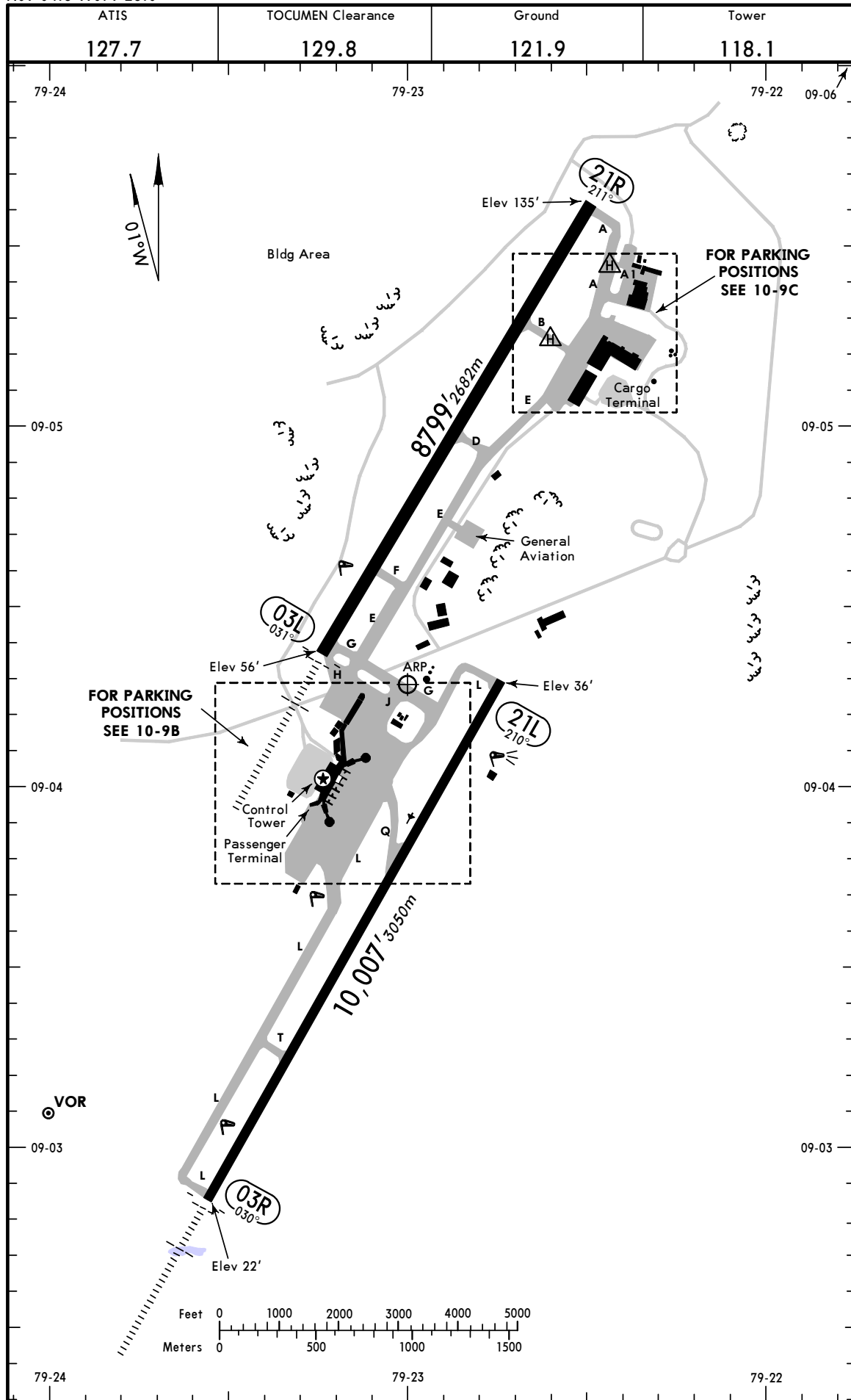
SID

<p><i>Apt Elev</i> 135'</p>	<p>Trans level: By ATC Trans alt: 18000' The use of this departure is subject to prior approval by ATC.</p>																																
 <p>MSA TUM VOR</p>	<p>TOCUMEN 1 DEPARTURE [TUM1]</p>																																
<p>INITIAL CLIMB</p> <p>Take-off to the NORTH until reaching turning altitude, turn RIGHT to intercept TUM R-090 climbing to 3100', then turn RIGHT to intercept TUM R-115 direct to TUM.</p> <p>Take-off to the SOUTH until reaching 450', turn LEFT to intercept TUM R-161 climbing to 3100', then turn LEFT to intercept TUM R-135 direct to TUM.</p>																																	
<p>TRANSITIONS</p> <p>Via TUM R-242 to IRUKA, intercept airway A-502 and climb according to ATC instructions.</p> <p>Via TUM R-256 to KIKES, intercept airway G-440 and climb according to ATC instructions.</p>	<table border="1" style="width: 100%; border-collapse: collapse; margin-bottom: 10px;"> <thead> <tr> <th>Rwys</th> <th>Gnd speed-KT</th> <th>75</th> <th>100</th> <th>150</th> <th>200</th> <th>250</th> <th>300</th> </tr> </thead> <tbody> <tr> <td>03L</td> <td>V/V (fpm)</td> <td>388</td> <td>517</td> <td>775</td> <td>1033</td> <td>1292</td> <td>1550</td> </tr> <tr> <td>03R</td> <td>V/V (fpm)</td> <td>288</td> <td>383</td> <td>575</td> <td>767</td> <td>958</td> <td>1150</td> </tr> <tr> <td>21L/R</td> <td>V/V (fpm)</td> <td>250</td> <td>333</td> <td>500</td> <td>667</td> <td>833</td> <td>1000</td> </tr> </tbody> </table> <p>This SID requires take-off minimums: 2 engines: Ceiling 400', Visibility 1600m; 3 or more engines: Ceiling 400', Visibility 800m. The following minimum climb rates are required: Rws 03L/R to: TUM R-090/D10. Rws 21L/R to: Assigned altitude.</p>	Rwys	Gnd speed-KT	75	100	150	200	250	300	03L	V/V (fpm)	388	517	775	1033	1292	1550	03R	V/V (fpm)	288	383	575	767	958	1150	21L/R	V/V (fpm)	250	333	500	667	833	1000
Rwys	Gnd speed-KT	75	100	150	200	250	300																										
03L	V/V (fpm)	388	517	775	1033	1292	1550																										
03R	V/V (fpm)	288	383	575	767	958	1150																										
21L/R	V/V (fpm)	250	333	500	667	833	1000																										
<p>RWY</p> <p>03L/R</p> <p>21L/R</p>	<p>IRUKA</p> <p>KIKES</p> <p>G440</p> <p>A 502</p> <p>D10 TUM N09 03.3 W079 13.9 At or above 3100'</p> <p>TOCUMEN P 117.1 TUM N09 03.1 W079 24.0 At or above 5000'</p> <p>KIKES N08 53.2 W080 03.4 At or above 5000'</p> <p>IRUKA N08 43.0 W080 02.7 At or above 8800'</p> <p>TABOGA I P 110.0 TBG N08 47.3 W079 33.7 At or above 3100'</p> <p>At or above 750'</p> <p>At or above 500'</p> <p>At or above 450'</p> <p>At or above 3100'</p>																																
<p>CHANGES: None.</p>	<p>NOT TO SCALE</p> 																																

MPTO/PTY
 Apt Elev **135'**
 N09 04.3 W079 23.0

JEPPESEN
 1 MAR 13 (10-9)

PANAMA CITY, PANAMA
TOCUMEN INTL



CHANGES: Runway bearings, taxiways, ramps.

MPTO/PTY



PANAMA CITY, PANAMA
 TOCUMEN INTL

1 MAR 13

10-9A

GENERAL							
Visual circling Northwest of Rwy 03-21 not authorized. Birds in vicinity of airport.							
ADDITIONAL RUNWAY INFORMATION							
RWY					USABLE LENGTHS		WIDTH
					LANDING BEYOND		
				Threshold	Glide Slope	TAKE-OFF	
03R	HIRL	ALSF-I	PAPI-L (angle 3.00°)	RVR	8855'	2699m	148'
21L	HIRL	PAPI-L (angle 3.00°)					45m
03L	HIRL	① HIALS	PAPI-L (angle 3.07°)				148'
21R	HIRL	PAPI-R (angle 3.07°)					45m
① ALSF-I with no flashers.							
TAKE-OFF							
All Rwys							
2 Eng	REFER TO SID FOR TAKE-OFF MINIMUMS						
3 & 4 Eng							

CHANGES: PAPI, Rwy 03L/21R width.

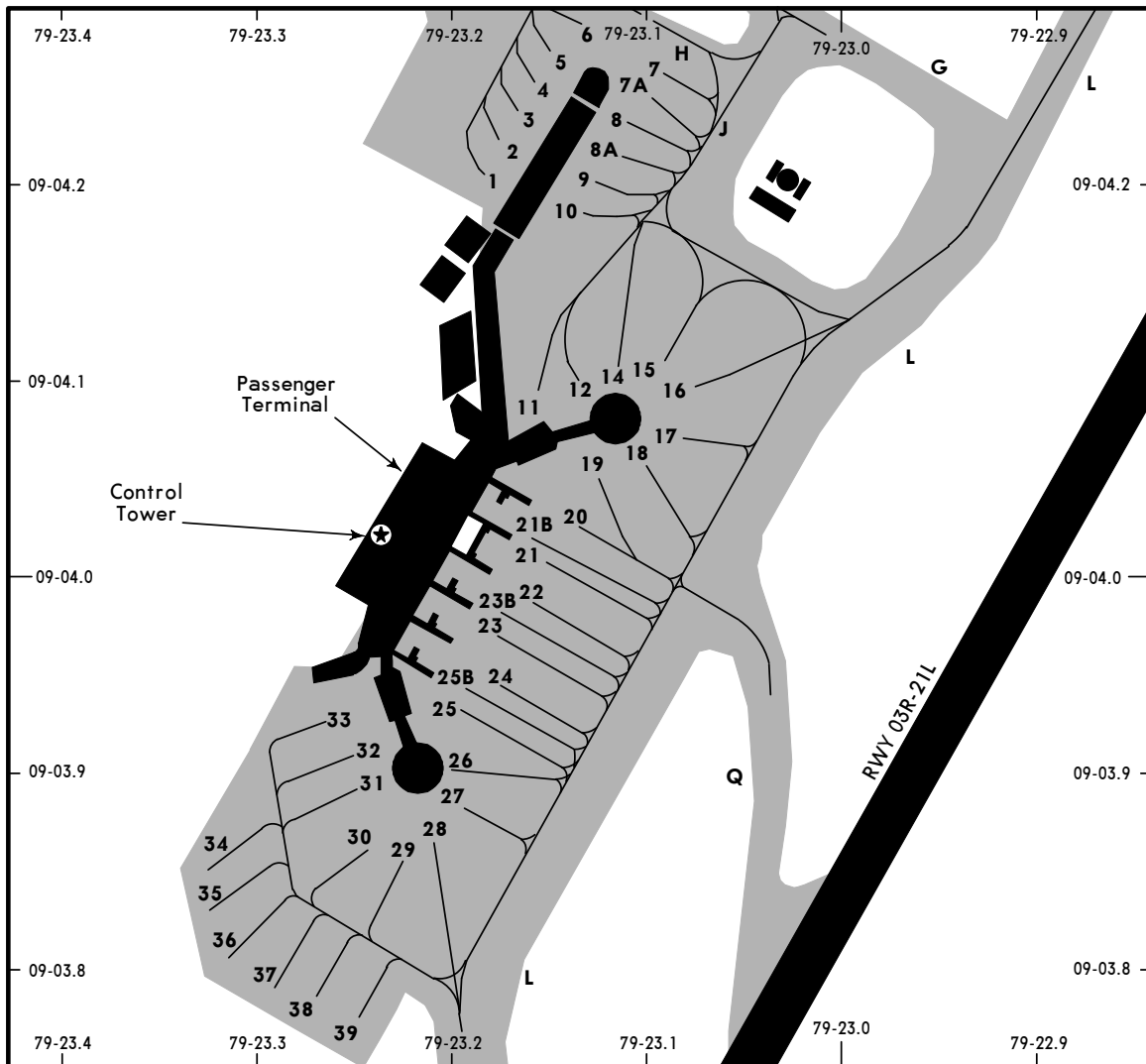
MPTO/PTY



PANAMA CITY, PANAMA

1 MAR 13 (10-9B)

TOCUMEN INTL



PARKING SPOT COORDINATES

SPOT No.	COORDINATES
PASSENGER TERMINAL	
1 thru 3	N09 04.2 W079 23.2
4 thru 7A	N09 04.3 W079 23.1
8 thru 10	N09 04.2 W079 23.1
11	N09 04.1 W079 23.2
12, 14 thru 19	N09 04.1 W079 23.1
20	N09 04.0 W079 23.1
21 thru 24	N09 04.0 W079 23.2
25	N09 03.9 W079 23.2
25B	N09 04.0 W079 23.2
26 thru 31	N09 03.9 W079 23.2
32, 33	N09 03.9 W079 23.3
REMOTE PARKING	
34 thru 36	N09 03.9 W079 23.3
37 thru 39	N09 03.8 W079 23.3

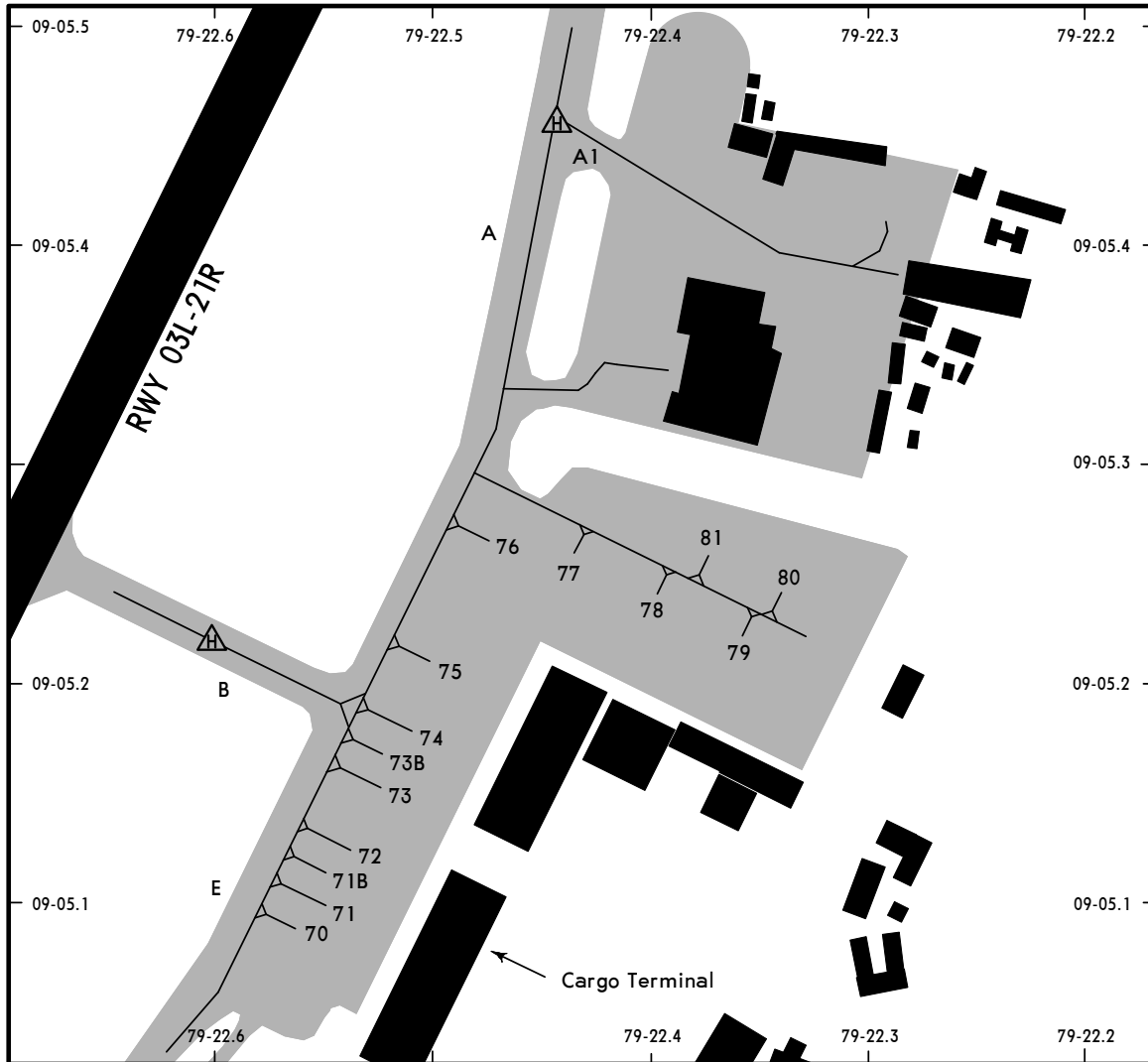
MPTO/PTY



PANAMA CITY, PANAMA

1 MAR 13 (10-9C)

TOCUMEN INTL



PARKING SPOT COORDINATES

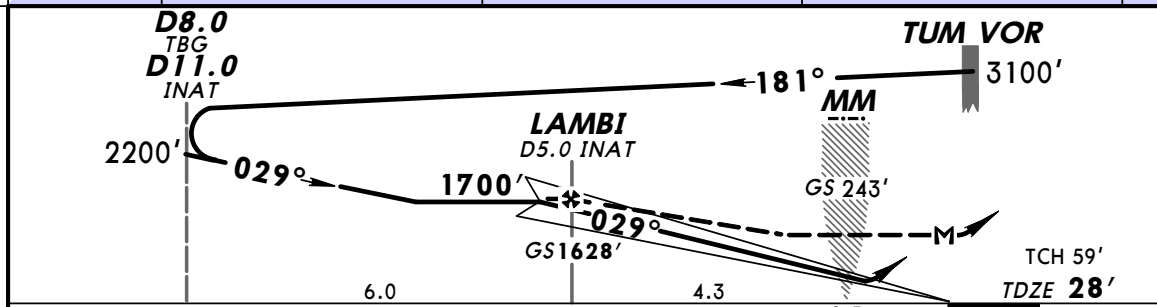
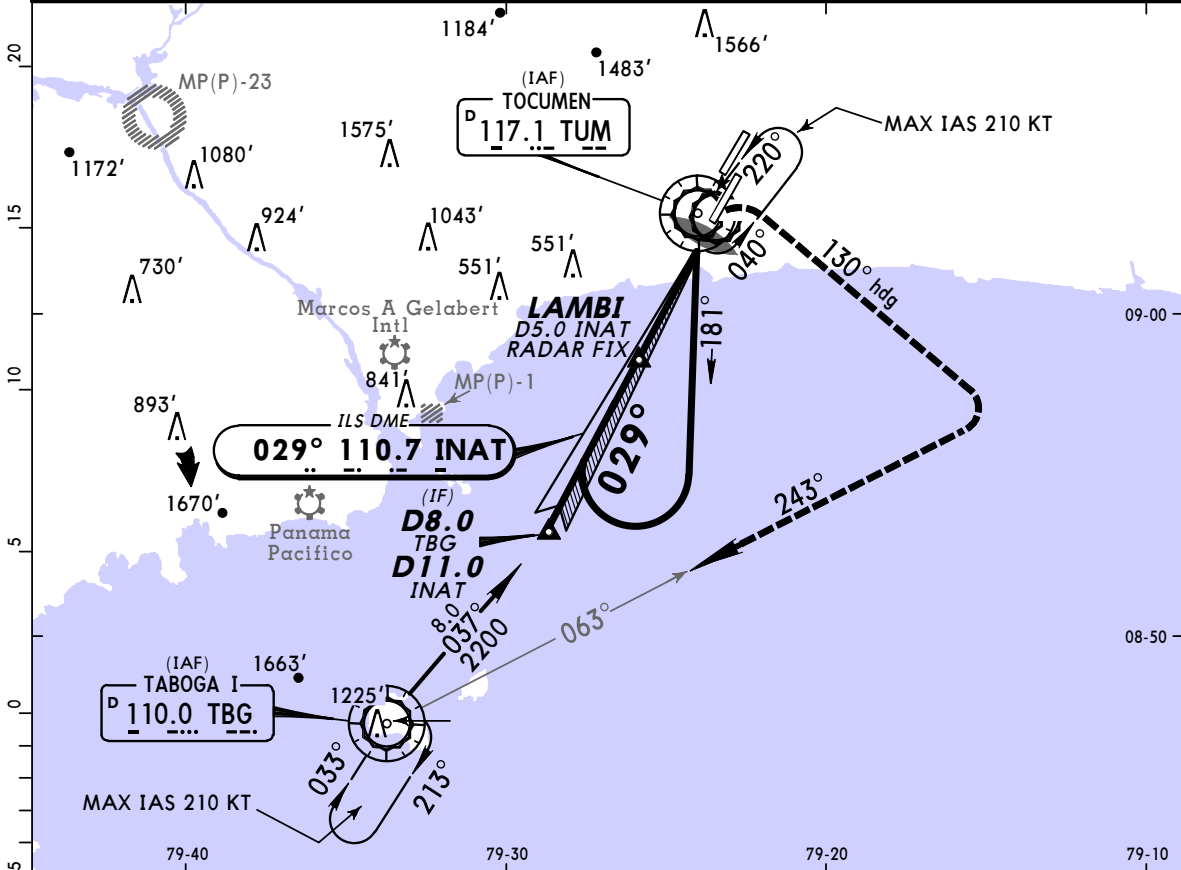
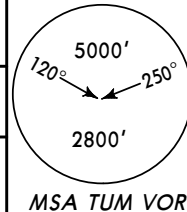
SPOT No.	COORDINATES
CARGO TERMINAL	
70	N09 05.1 W079 22.6
71 thru 72	N09 05.1 W079 22.5
73 thru 76	N09 05.2 W079 22.5
77 thru 79	N09 05.2 W079 22.4
80, 81	N09 05.3 W079 22.3

MPTO/PTY
TOCUMEN INTL

JEPPESEN
 9 NOV 12 **(11-1)**

PANAMA CITY, PANAMA
ILS Rwy 03R

BRIEFING STRIP™	ATIS 127.7	PANAMA Approach (R) 119.7 121.2		TOCUMEN Tower 118.1	Ground 121.9
	LOC INAT 110.7	Final Apch Crs 029°	GS LAMBI 1628' (1600')	ILS DA(H) 228' (200')	Apt Elev 135' TDZE 28'
	MISSED APCH: Climb STRAIGHT ahead to 500', then turn RIGHT to 130° heading to 3100', then inbound via TBG VOR R-063.				
Alt Set: hPa TDZ Elev: 1 hPa Trans level: FL 180 Trans alt: 18000' 1. DME or RADAR required. 2. CAUTION: High terrain to the North and West of airport. 3. DME co-located with glide slope.					



Gnd speed-Kts	60	80	100	120	140	160	ALSF-I PAPI	500'	RT	130°	3100'
GS	3.00°	372	478	531	637	849		↑		↑	hdg
LAMBI to MAP 4.8	4:07	3:12	2:53	2:24	2:03	1:48					

STRAIGHT-IN LANDING RWY 03R				CEILING REQUIRED		CIRCLE-TO-LAND	
ILS DA(H) 228' (200')		LOC (GS out) MDA(H) 360' (332')		Not Authorized Northwest of Rwy 03L-21R			
FULL	ALS out	ALS out		Max Kts	MDA(H)	CEIL-VIS	
A				90	540' (405')	500'-1600m	
B		300'-800m		120	600' (465')	500'-1600m	
C	100'-800m	100'-1200m	300'-1600m	140	600' (465')	500'-2400m	
D		300'-1200m		165	760' (625')	700'-3200m	

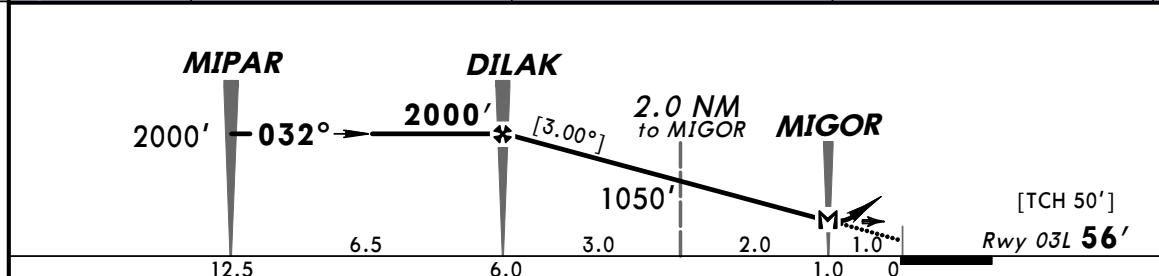
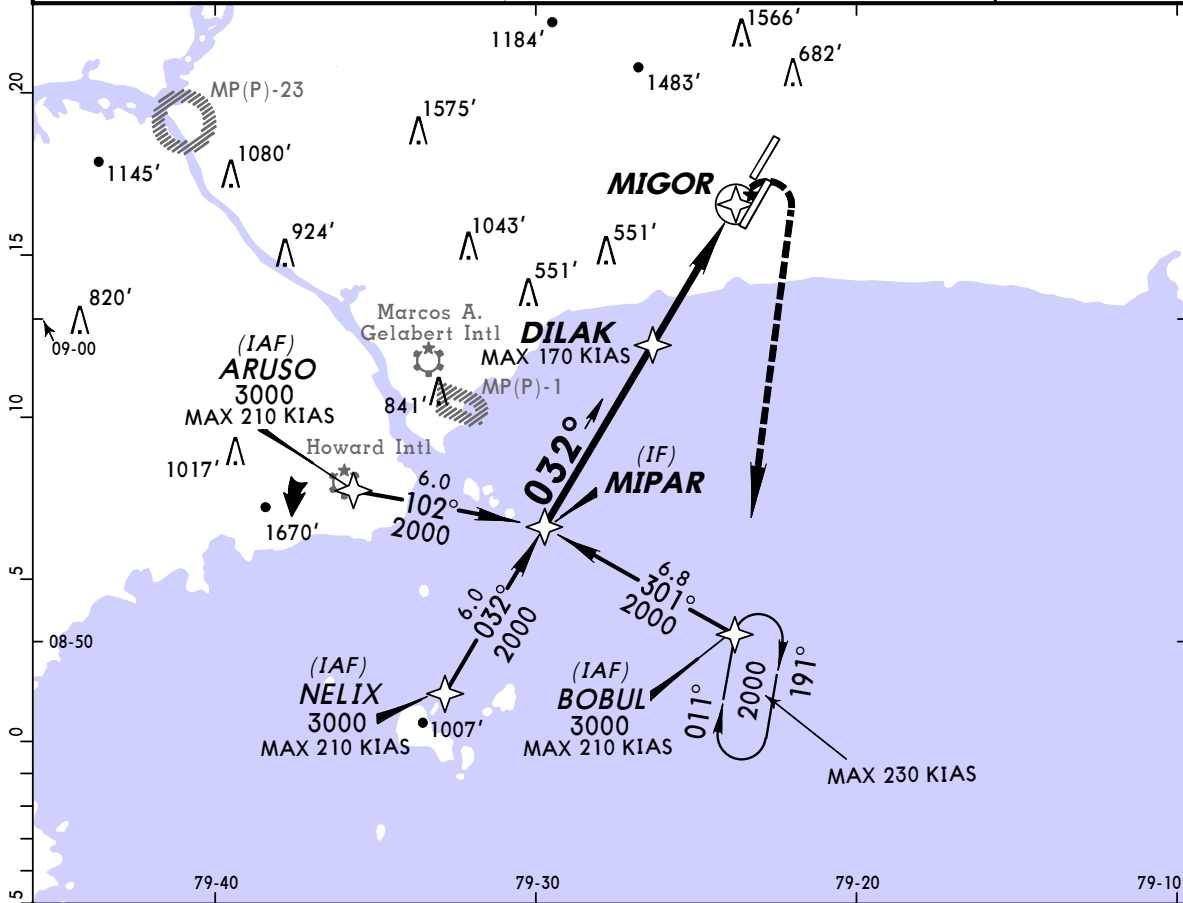
CHANGES: TUM VOR hold.

MPTO/PTY
TOCUMEN INTL

JEPPESEN
 25 NOV 11 (12-1)

PANAMA CITY, PANAMA
RNAV (GNSS) Rwy 03L

ATIS 127.7		PANAMA Approach (R) 119.7 121.2		TOCUMEN Tower 118.1	Ground 121.9
RNAV	Final Apch Crs 032°	Minimum Alt DILAK 2000' (1944')	LNAV MDA(H) 390' (334')	Apt Elev 135' Rwy 03L 56'	4500' MSA ARP
MISSED APCH: Turn RIGHT direct to BOBUL and hold at 2000' or as directed by ATC.					
Alt Set: hPa Rwy Elev: 2 hPa Trans level: FL 180 Trans alt: 18000' 1. Aircraft must be multi sensor equipped.					

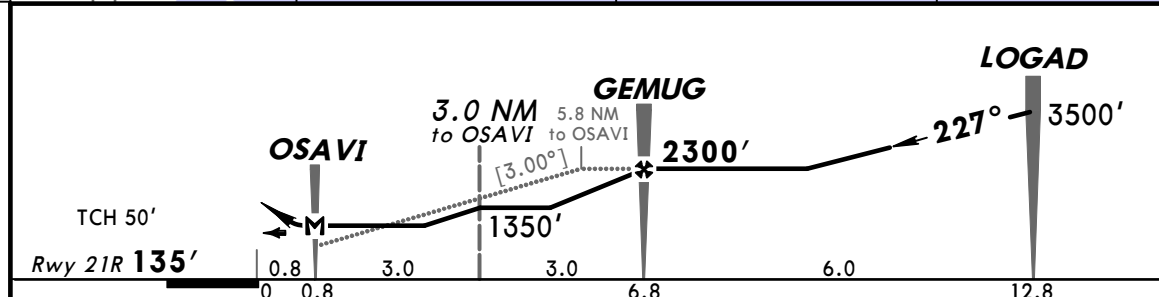
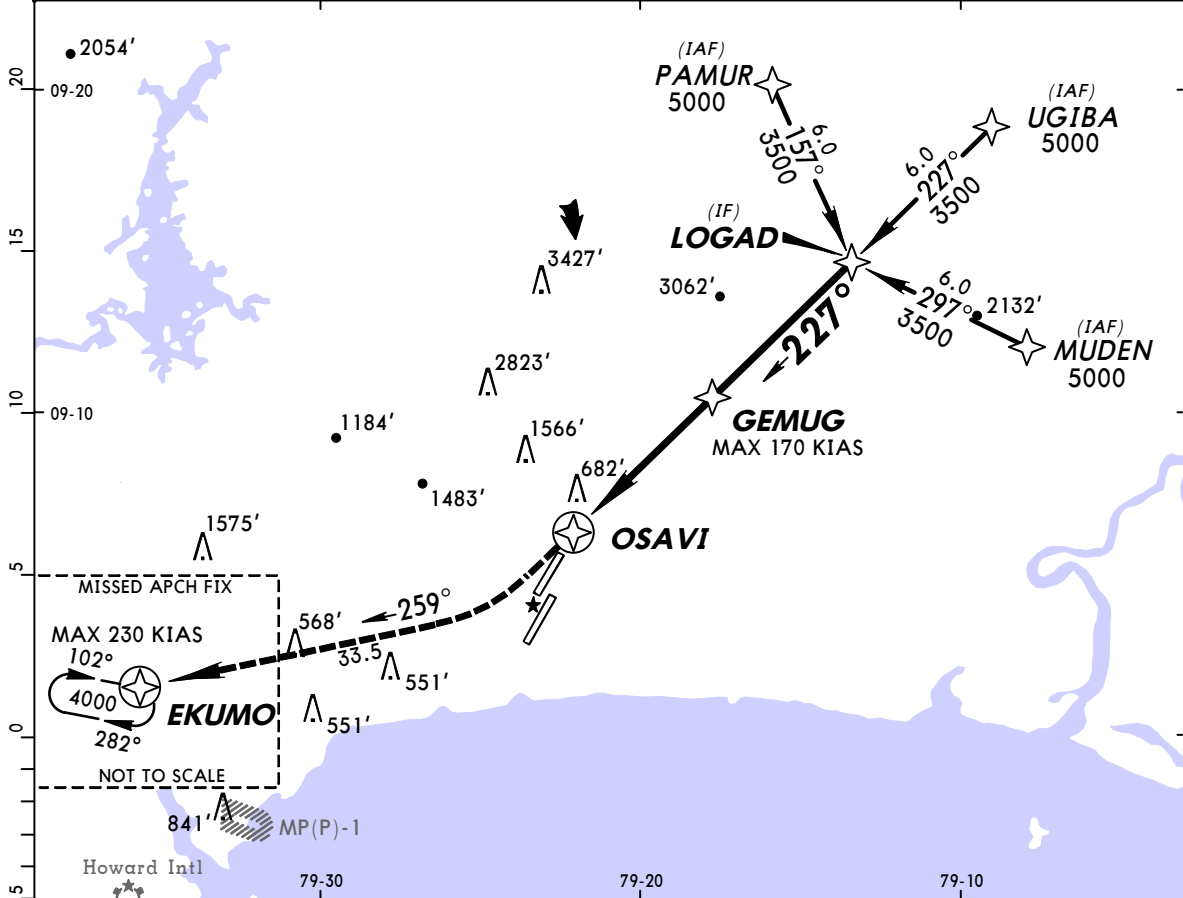


Gnd speed-Kts	60	80	100	120	140	160	HIALS	PAPI	RT	D	BOBUL	
Descent angle	[3.00°]						319					425

STRAIGHT-IN LANDING RWY 03L				CIRCLE-TO-LAND			
LNAV/VNAV		LNAV		LNAV		LNAV	
DA(H) 400' (344')		MDA(H) 390' (334')		MDA(H) 390' (334')		MDA(H) 390' (334')	
ALS out		ALS out		ALS out		ALS out	
A				A	NA		
B	1200m			B			
C		2000m		C			
D	1600m			D			
					1200m	1600m	
					800m	2000m	

MPTO/PTY **JEPPESEN** **PANAMA CITY, PANAMA**
TOCUMEN INTL 25 NOV 11 **(12-2)** **RNAV (GNSS) Rwy 21R**

ATIS 127.7		PANAMA Approach (R) 119.7 121.2		TOCUMEN Tower 118.1	Ground 121.9
RNAV	Final Apch Crs 227°	Minimum Alt GEMUG 2300' (2165')	LNAV MDA(H) 1140' (1005')	Apt Elev 135' Rwy 21R 135'	4500'
MISSED APCH: As soon as possible, turn RIGHT track 259° to EKUMO and hold at 4000' or as directed by ATC.					
Alt Set: hPa Rwy Elev: 5 hPa Trans level: FL 180 Trans alt: 18000' 1. Aircraft must be multi sensor equipped. 2. Max speed 210 KIAS within 20 NM of airport.					MSA ARP



Gnd speed-Kts	60	80	100	120	140	160	PAPI-L	259° RT	EKUMO
Descent angle	[3.00°]	319	425	531	637	743			
MAP at OSAVI									

STRAIGHT-IN LANDING RWY21R		CIRCLE-TO-LAND	
LNAV			
MDA(H) 1140' (1005')			
A	2000m	A	NA
B	2400m	B	
C	4800m	C	
D		D	

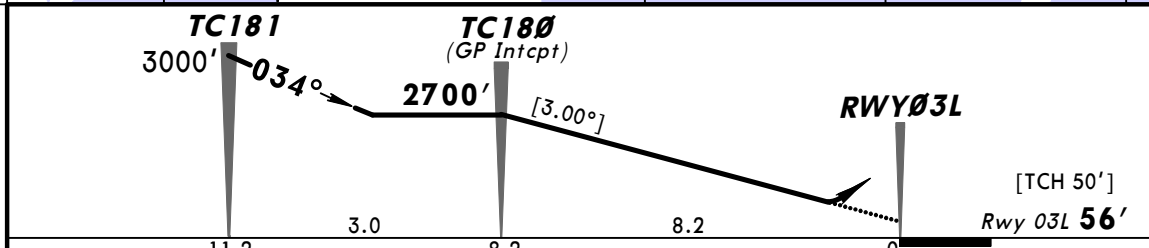
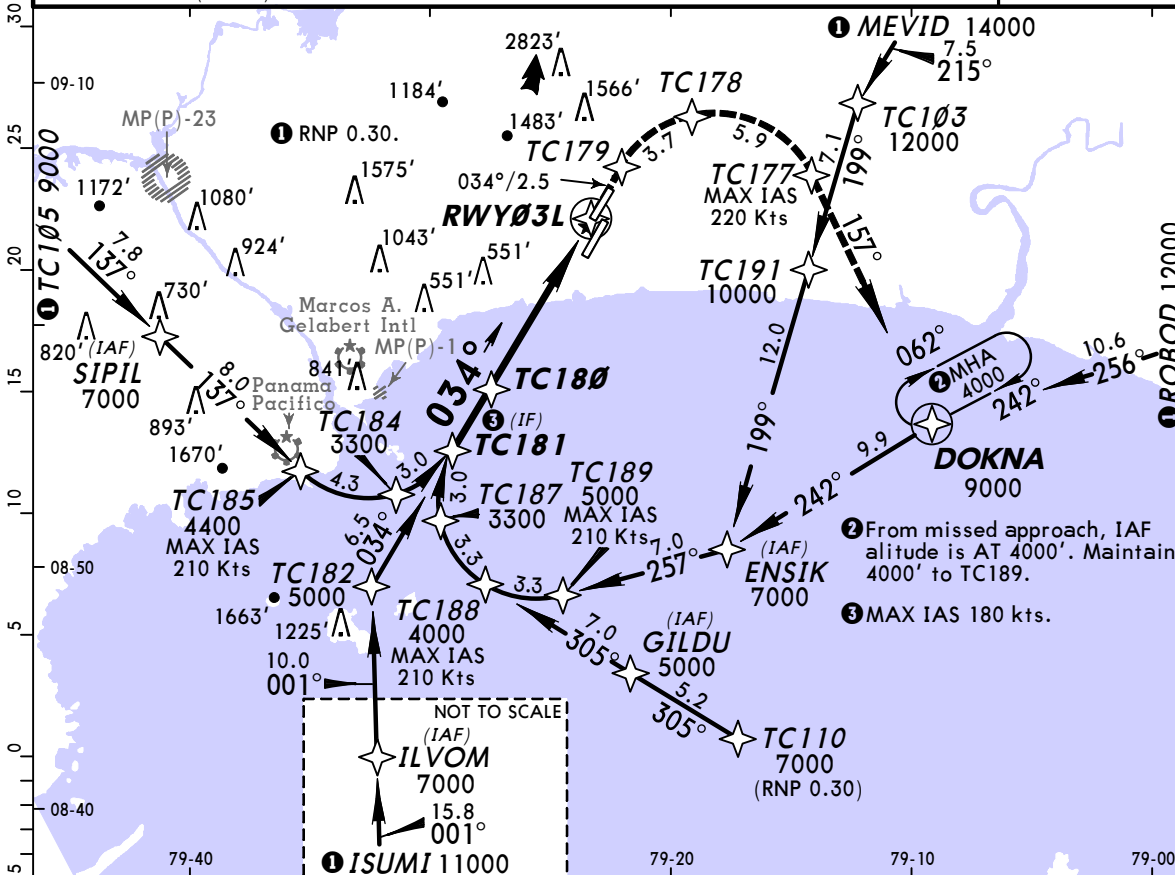
MPTO/PTY
TOCUMEN INTL

1 MAR 13

12-20

PANAMA CITY, PANAMA
RNAV (RNP) Y Rwy 03L

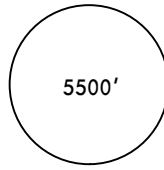
ATIS 127.7		PANAMA Approach (R) 119.7 121.2		TOCUMEN Tower 118.1	Ground 121.9
RNAV	Final Apch Crs 034°	Minimum Alt TC180 2700' (2644')	RNP 0.15 DA(H) 425' (369')	Apt Elev 135' Rwy 03L 56'	5500' MSA RWY03L
MISSED APCH: Climb to 4000' on track 034° to TC179, then on RIGHT turn to TC178, then climbing RIGHT turn to TC177, then on track 157° to DOKNA and hold or as instructed by ATC. ATC may issue alternate missed approach instructions. Missed approach requires RNP level less than 1.0.					
Alt Set: hPa Rwy Elev: 2 hPa Trans level: FL 180 Trans alt: 18000' 1. SPECIAL AIRCRAFT & AIRCREW AUTHORIZATION REQUIRED. 2. RF and GPS required. 3. For uncompensated Baro-VNAV systems, procedure not authorized below 1°C (34°F) or above 49°C (120°F).					

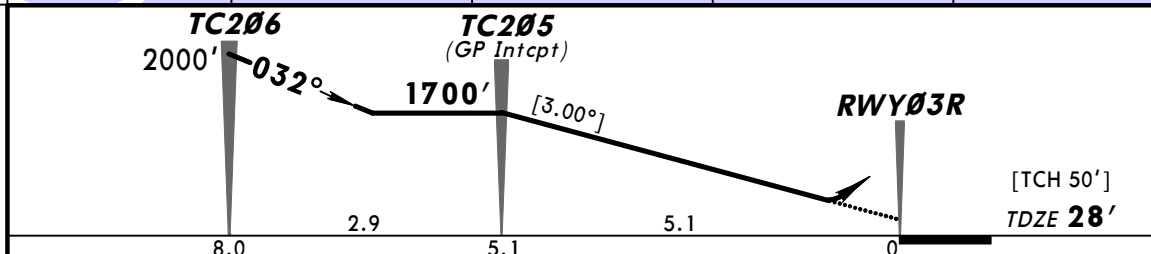
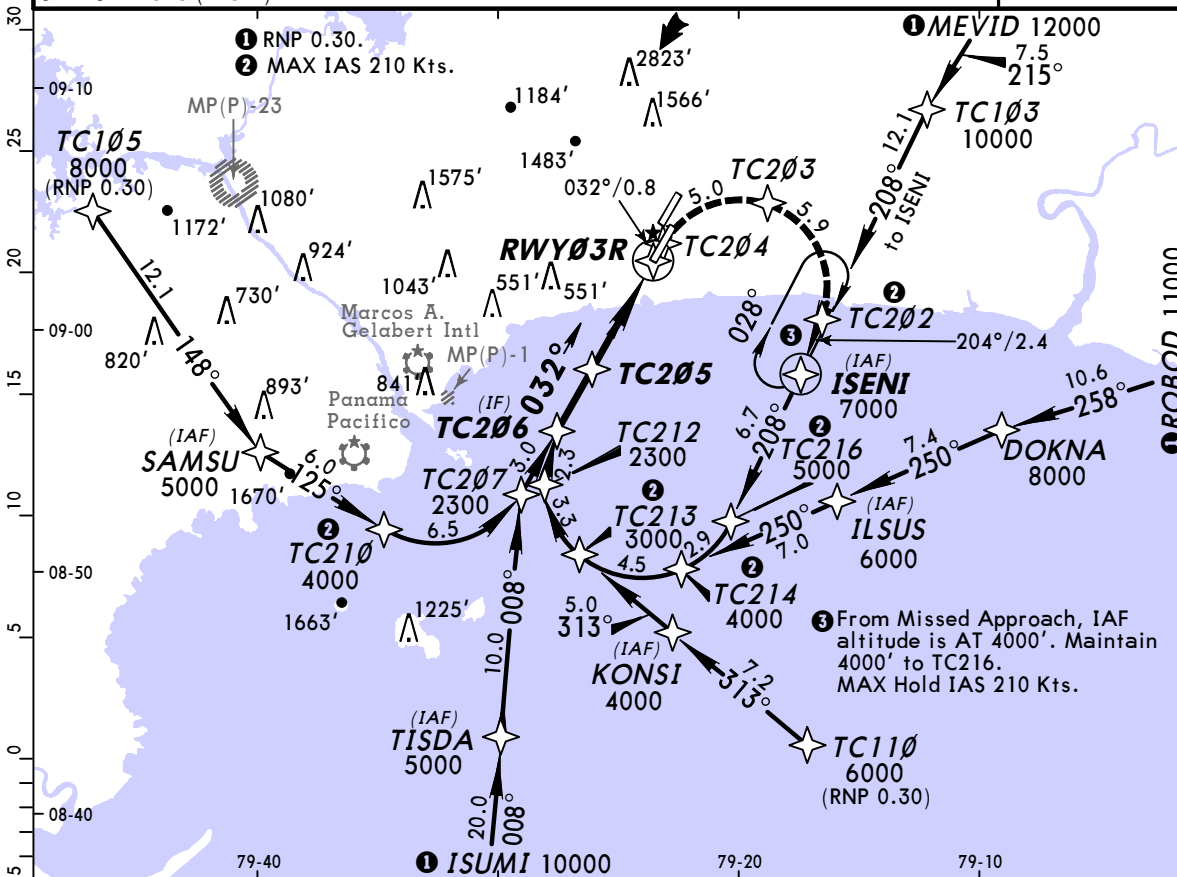


Gnd speed-Kts	70	90	100	120	140	160	HIALS PAPI	4000' ↑ on 034° TC179
Descent Angle	[3.00°]	37.2	47.8	53	63.7	74.5		
MAP at DA								

STRAIGHT-IN LANDING RWY03L			
RNP 0.15 DA(H) 425' (369')		RNP 0.30 DA(H) 462' (406')	
ALS out		ALS out	
A			
B	1200m	2000m	2400m
C			
D			

MPTO/PTY **JEPPESEN** **PANAMA CITY, PANAMA**
TOCUMEN INTL 1 MAR 13 (12-21) **RNAV (RNP) Rwy 03R**

ATIS 127.7	PANAMA Approach (R) 119.7 121.2		TOCUMEN Tower 118.1	Ground 121.9
RNAV	Final Apch Crs 032°	Minimum Alt TC205 1700' (1672')	RNP 0.15 DA(H) 278' (250')	Apt Elev 135' TDZE 28'
MISSED APCH: Climb to 4000' on track 032° to TC204, then continue climbing RIGHT turn to TC203, then climbing RIGHT turn to TC202, then on track 204° to ISENI and hold or as instructed by ATC. ATC may issue alternate missed approach instructions. Missed approach requires RNP level less than 1.0.				 5500' MSA RWY03R
Alt Set: hPa TDZ Elev: 1 hPa Trans level: FL 180 Trans alt: 18000' 1. SPECIAL AIRCRAFT & AIRCREW AUTHORIZATION REQUIRED. 2. RF and GPS required. 3. For uncompensated Baro-VNAV systems, procedure not authorized below 0°C (32°F) or above 48°C (118°F).				
Briefing Strip Text				



Gnd speed-Kts	70	90	100	120	140	160	ALSF-I 4000'	on 032° TC204
Descent Angle	[3.00°]	372	478	531	637	743		
MAP at DA								

STRAIGHT-IN LANDING RWY03R			
RNP 0.15 DA(H) 278' (250')		RNP 0.30 DA(H) 350' (322')	
ALS out		ALS out	
A			
B	800m	1200m	1600m
C			
D			

MPTO/PTY
TOCUMEN INTL

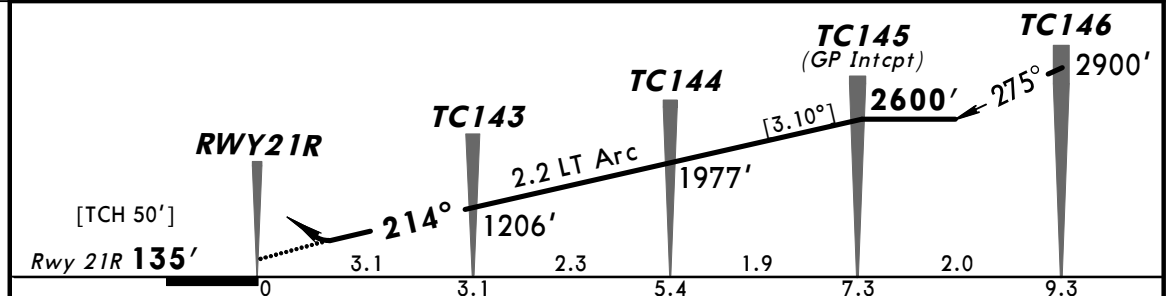
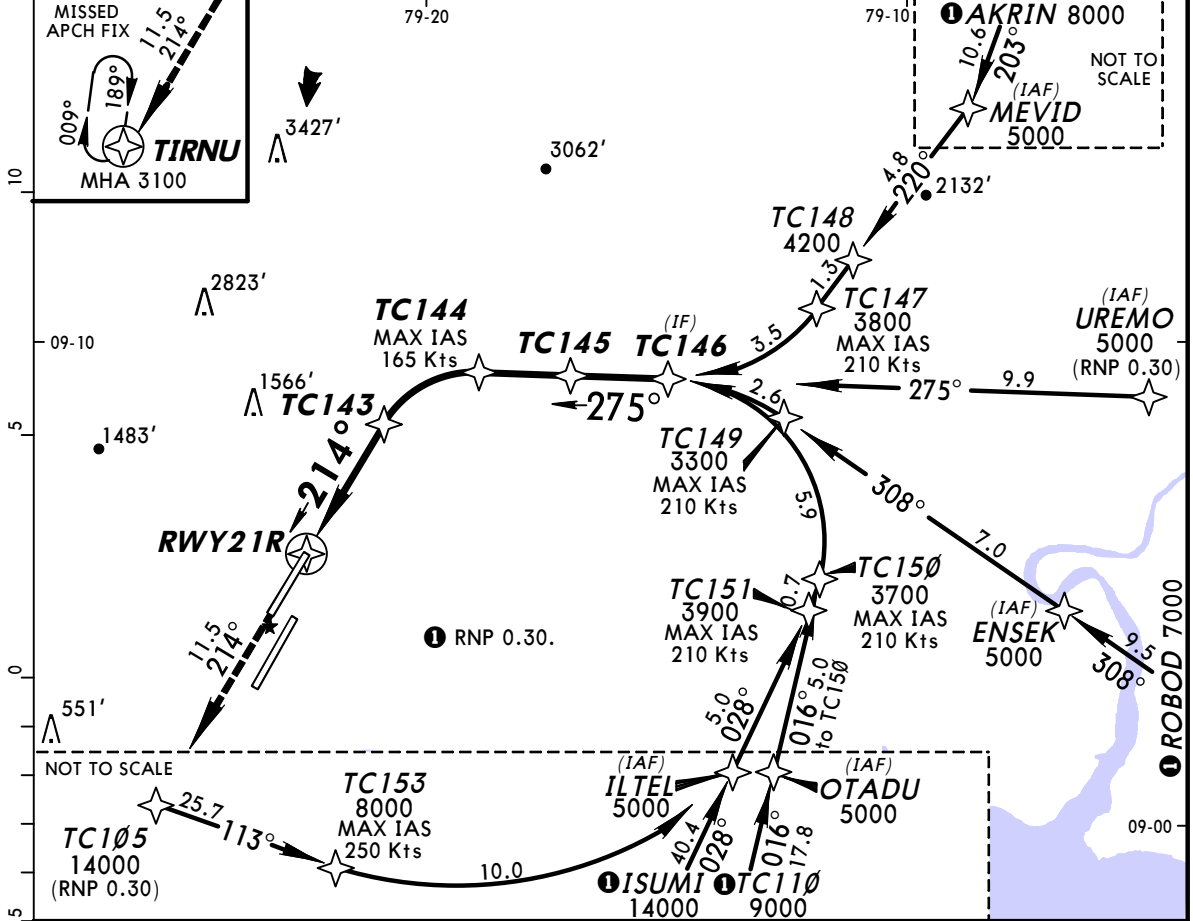
1 MAR 13

12-22



PANAMA CITY, PANAMA
RNAV (RNP) Z Rwy 21R

ATIS 127.7	PANAMA Approach (R) 119.7 121.2		TOCUMEN Tower 118.1		Ground 121.9
RNAV	Final Apch Crs 214°	Minimum Alt TC145 2600' (2465')	RNP 0.10 DA(H) 385' (250')	Apt Elev 135' Rwy 21R 135'	5500'
MISSED APCH: Climb to 3100' on track 214° to TIRNU and hold. ATC may issue alternate missed approach instructions.					
Alt Set: hPa Rwy Elev: 5 hPa Trans level: FL 180 Trans alt: 18000' 1. SPECIAL AIRCRAFT & AIRCREW AUTHORIZATION REQUIRED. 2. RF and GPS required. 3. For uncompensated Baro-VNAV systems, procedure not authorized below 0°C (32°F) or above 39°C (102°F).					MSA RWY21R



Gnd speed-Kts	70	90	100	120	140	160	PAPI-R	3100'	on 214°	TIRNU
Descent Angle	[3.10°]	384	494	548	658	768				
MAP at DA										

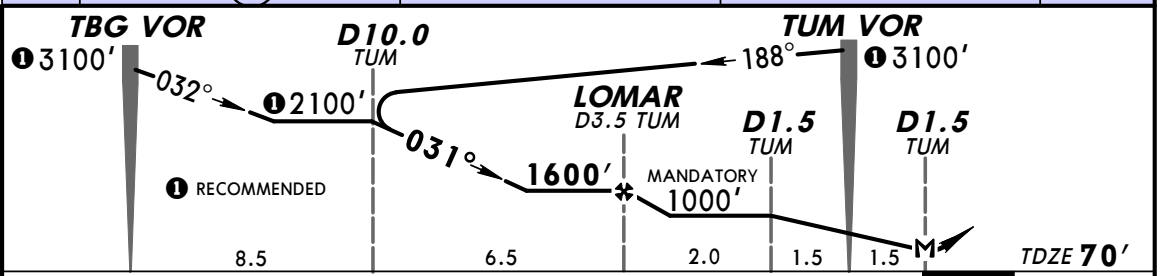
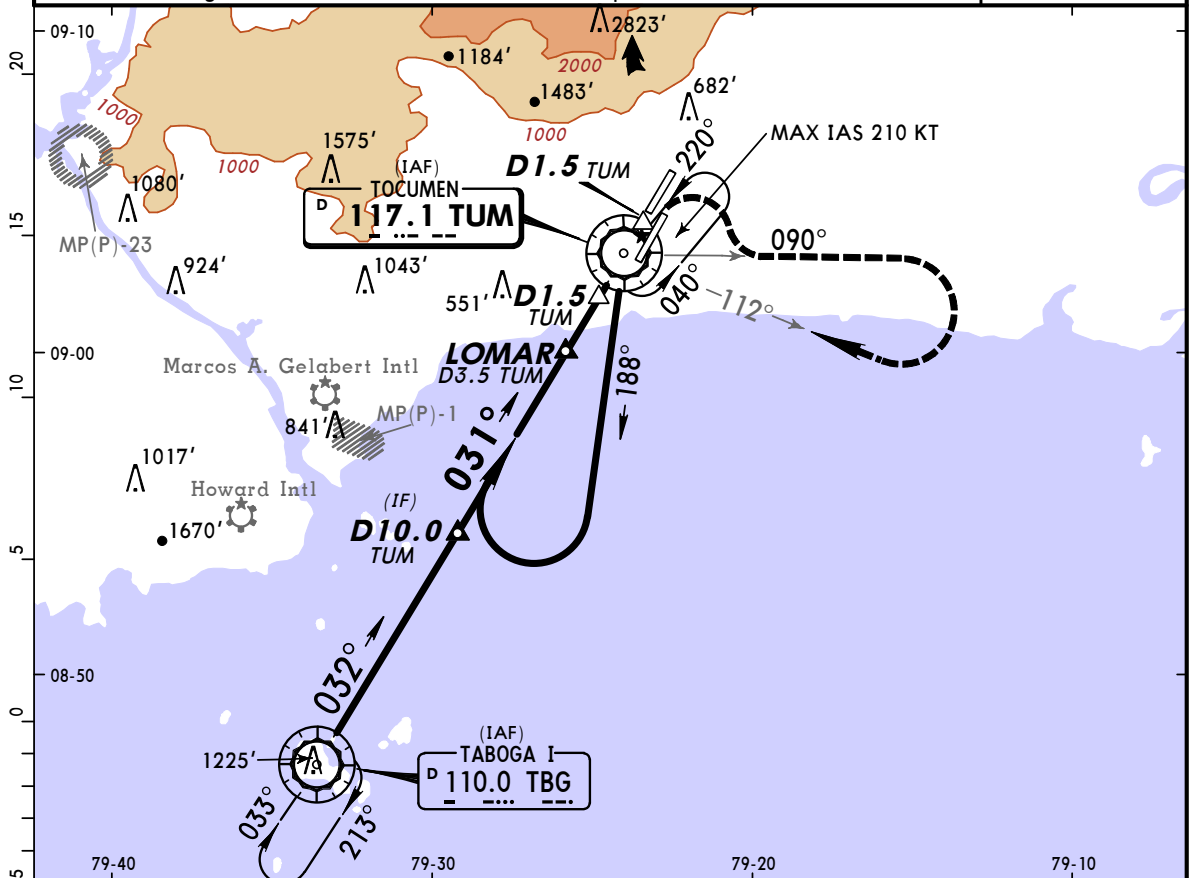
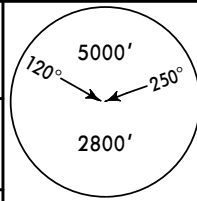
STRAIGHT-IN LANDING RWY 21R		
RNP 0.10 DA(H) 385' (250')	RNP 0.15 DA(H) 455' (320')	RNP 0.30 DA(H) 948' (813')
A		
B	1200m	4400m
C		
D		

MPTO/PTY
TOCUMEN INTL

19 FEB 10 **(13-1)**

JEPPESEN PANAMA CITY, PANAMA
VOR DMÉ Rwy 03L

ATIS 127.7		PANAMA Approach (R) 119.7 121.2		TOCUMEN Tower 118.1	Ground 121.9
BRIEFING STRIP™	VOR TUM 117.1	Final Apch Crs 031°	Minimum Alt LOMAR 1600' (1530')	MDA(H) 420' (350')	Apt Elev 135' TDZE 70'
	MISSED APCH: Turn RIGHT climbing to 3100' outbound on TUM VOR R-090, turn RIGHT inbound on TUM VOR R-112, return to TUM VOR and hold.				
	Alt Set: hPa TDZ Elev: 3 hPa Trans level: FL 180 Trans alt: 18000' 1. CAUTION: High terrain to the North and West of airport.				



Gnd speed-Kts	60	80	100	120	140	160	HIALS PAPI 3100' TUM on 117.1 RT R-090
Rate of descent on final (feet/min)	350	450	550	650	750	850	
MAP at D1.5 TUM or LOMARA to MAP	5.0	5:00	3:45	3:00	2:30	2:09	

STRAIGHT-IN LANDING RWY03L			CEILING REQUIRED		CIRCLE-TO-LAND Not Authorized Northwest of Rwy 03L-21R	
MDA(H) 420' (350')						
	CEILING-VISIBILITY	ALS out	Max Kts	MDA(H)	CEIL-VIS	
A			90	540' (405')	500' - 1600m	
B	300' - 1200m	300' - 1600m	120	600' (465')	500' - 1600m	
C			140	600' (465')	500' - 2400m	
D	300' - 1600m	300' - 2000m	165	760' (625')	700' - 3200m	

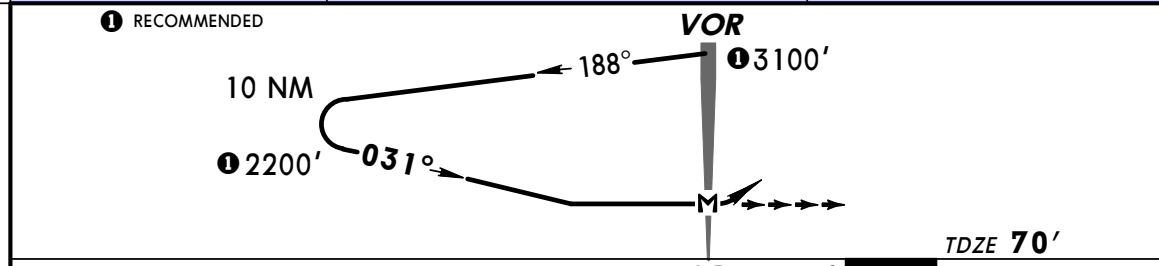
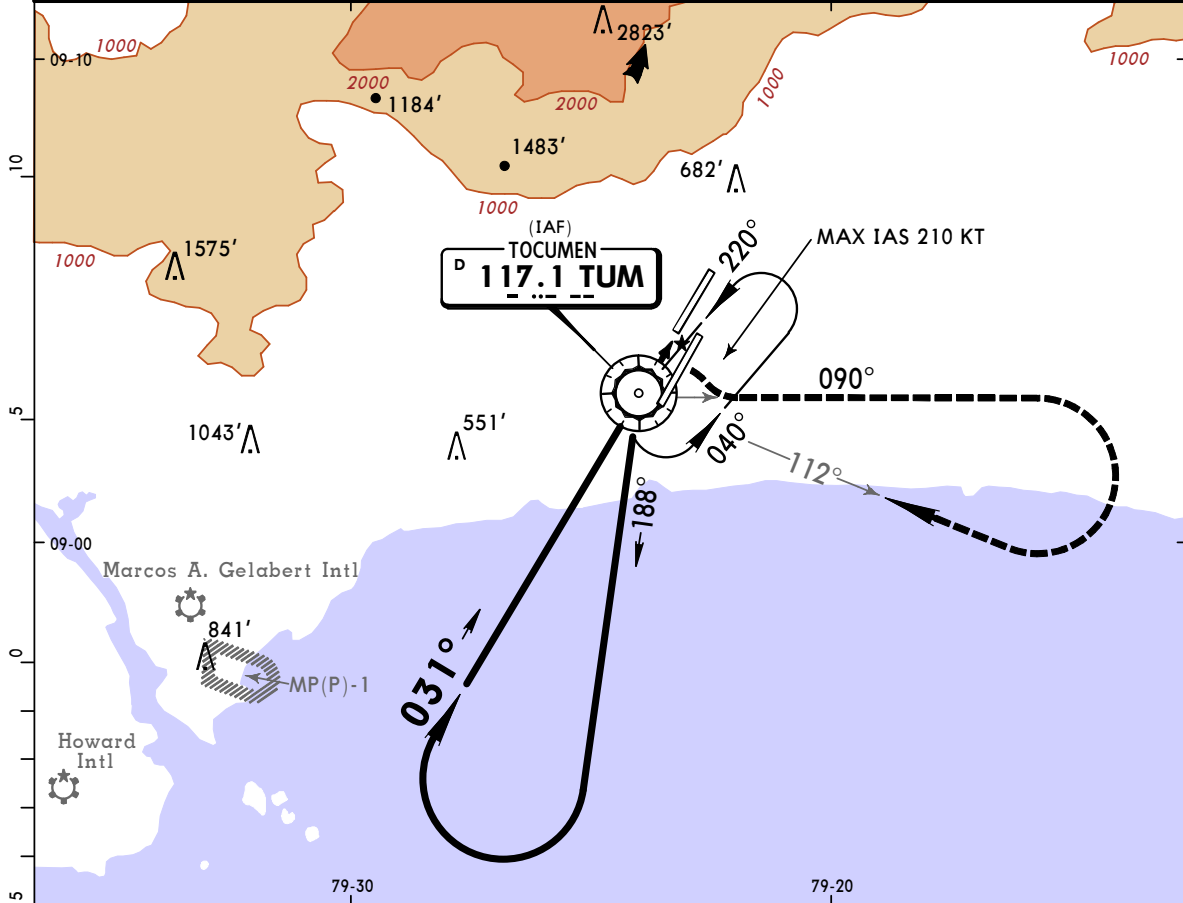
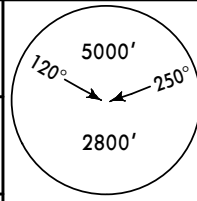
CHANGES: D10.0 waypoint.

MPTO/PTY
TOCUMEN INTL

19 FEB 10 **(13-2)**

JEPPESEN PANAMA CITY, PANAMA
VOR Rwy 03L

ATIS 127.7	PANAMA Approach (R) 119.7 121.2	TOCUMEN Tower 118.1	Ground 121.9
VOR TUM 117.1	Final Apch Crs 031°	No FAF	MDA(H) 680' (610')
MISSED APCH: Turn RIGHT climbing to 3100' outbound on TUM VOR R-090, turn RIGHT inbound on TUM VOR R-112, return to TUM VOR and hold.			Apt Elev 135' TDZE 70'
Alt Set: hPa TDZ Elev: 3 hPa Trans level: FL 180 Trans alt: 18000'			MSA TUM VOR

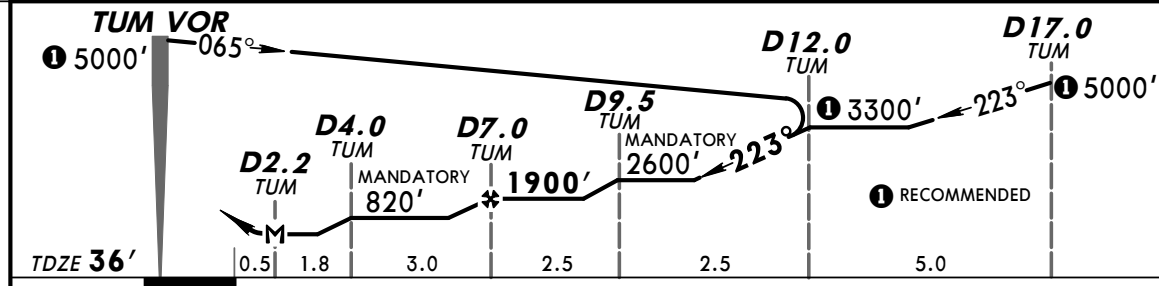
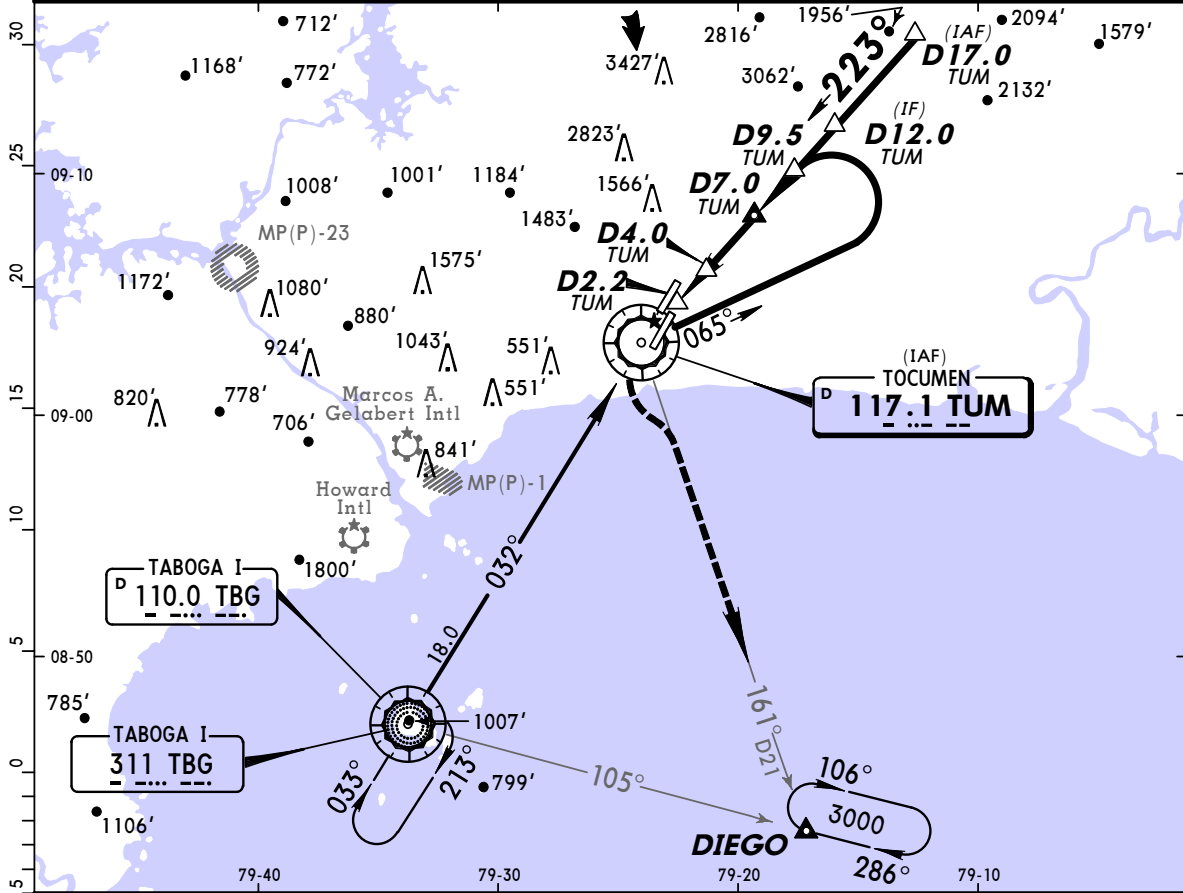


<table border="1" style="width: 100%; border-collapse: collapse;"> <tr> <th>Gnd speed-Kts</th> <td>60</td> <td>80</td> <td>100</td> <td>120</td> <td>140</td> <td>160</td> </tr> <tr> <th>Rate of descent on final (feet/min)</th> <td colspan="5">600</td> <td>750</td> </tr> <tr> <th>MAP at VOR</th> <td colspan="6"></td> </tr> </table>	Gnd speed-Kts	60	80	100	120	140	160	Rate of descent on final (feet/min)	600					750	MAP at VOR							<table border="1" style="width: 100%; border-collapse: collapse;"> <tr> <td style="text-align: center;">HIALS</td> <td style="text-align: center;">3100'</td> <td style="text-align: center;">TUM</td> </tr> <tr> <td style="text-align: center;">PAPI</td> <td style="text-align: center;"> </td> <td style="text-align: center;">on 117.1</td> </tr> <tr> <td colspan="2"></td> <td style="text-align: center;">R-090</td> </tr> </table>	HIALS	3100'	TUM	PAPI		on 117.1			R-090
Gnd speed-Kts	60	80	100	120	140	160																									
Rate of descent on final (feet/min)	600					750																									
MAP at VOR																															
HIALS	3100'	TUM																													
PAPI		on 117.1																													
		R-090																													

STRAIGHT-IN LANDING RWY03L		CEILING REQUIRED	CIRCLE-TO-LAND	
MDA(H) 680' (610')		Max Kts	Not Authorized Northwest of Rwy 03L-21R	
CEILING-VISIBILITY			MDA(H)	CEIL-VIS
A	ALS out	90		
B	600'-2800m	120	680' (545')	600'-2800m
C		140		
D	600'-3200m	165	760' (625')	700'-3200m

MPTO/PTY
TOCUMEN INTL **JEPPESEN PANAMA CITY, PANAMA**
 6 AUG 10 **(13-3)** **VOR DMÉ Rwy 21L**

ATIS 127.7		PANAMA Approach (R) 119.7 121.2		TOCUMEN Tower 118.1	Ground 121.9
VOR TUM 117.1	Final Apch Crs 223°	Minimum Alt D7.0 TUM 1900' (1864')	MDA(H) 480' (444')	Apt Elev 135' TDZE 36'	
MISSED APCH: Direct to TUM VOR climbing to 800', then outbound on TUM VOR R-161 to DIEGO climbing to 3000' and hold.					
Alt Set: hPa TDZ Elev: 1 hPa Trans level: FL 180 Trans alt: 18000' 1. Max holding IAS - 210 kts.					

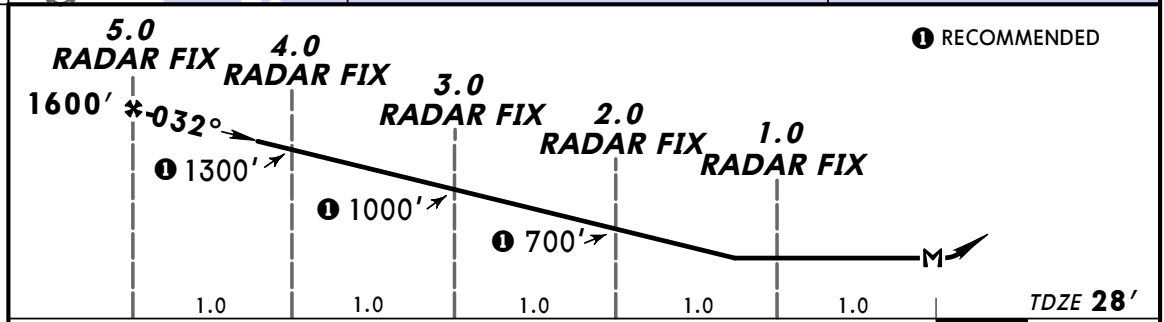
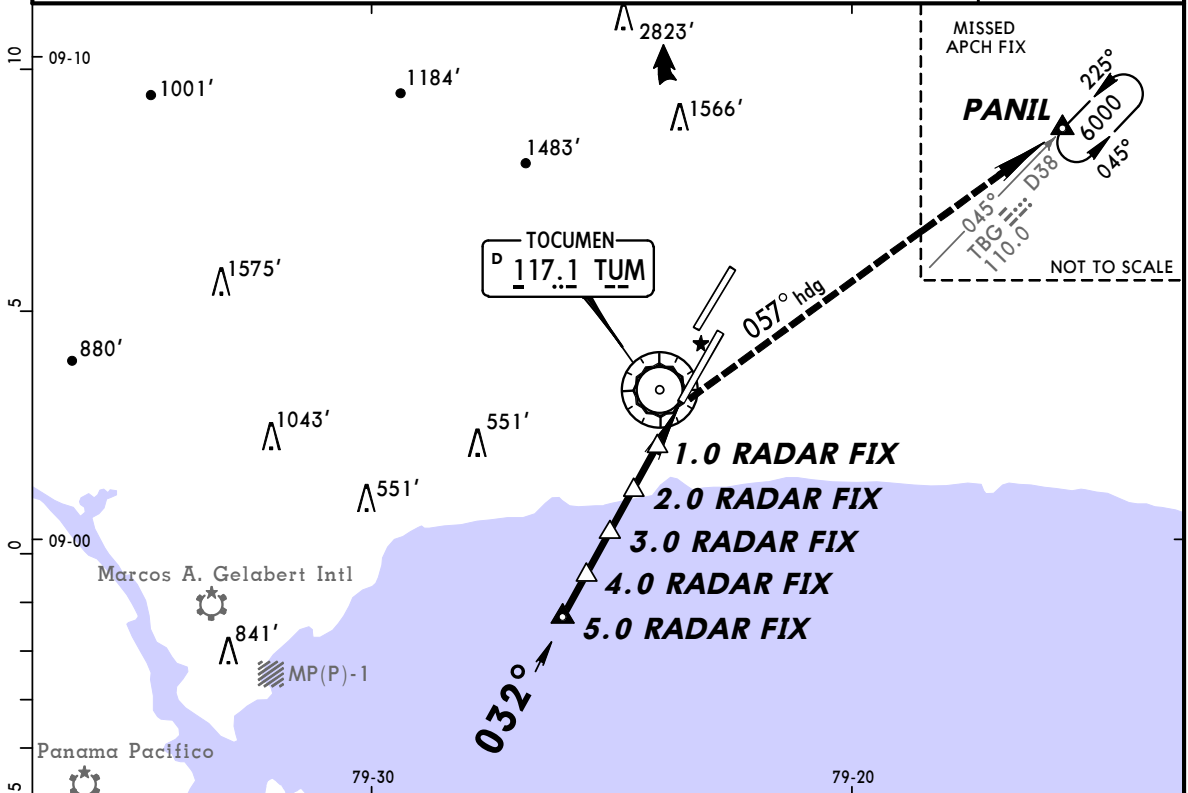


Gnd speed-Kts	60	80	100	120	140	160	PAPI		TUM 117.1	
Rate of descent on final (feet/min)	400	500	600	750	850	1000				
MAP at D2.2 TUM or FAF to MAP	4.8	4:48	3:36	2:53	2:24	2:03				

STRAIGHT-IN LANDING RWY 21L		CEILING REQUIRED		CIRCLE-TO-LAND	
MDA(H) 480' (444')		Not Authorized Northwest of Rwy 03L-21R			
	CEILING-VISIBILITY	Max Kts	MDA(H)	CEIL-VIS	
A	400' - 1600m	90	540' (405')	500' - 1600m	
B	400' - 1600m	120	600' (465')	500' - 1600m	
C	400' - 2000m	140	600' (465')	500' - 2400m	
D	400' - 2400m	165	760' (625')	700' - 3200m	

MPTO/PTY TOCUMEN INTL **JEPPESEN PANAMA CITY, PANAMA**
 8 JUN 12 (18-1) **RADAR ASR Rwy 03R**

ATIS 127.7		PANAMA Approach (R) 119.7 121.2		TOCUMEN Tower 118.1	Ground 121.9
RADAR	Final Apch Crs 032°	Minimum Alt 5.0 RADAR FIX 1600' (1572')	MDA(H) 460' (432')	Apt Elev 135' TDZE 28'	<div style="border: 1px solid black; border-radius: 50%; padding: 10px; width: 100px; margin: auto;"> No MSA Published </div>
MISSED APCH: Climbing RIGHT turn via heading 057° to 6000', direct to PANIL and hold.					
Alt Set: hPa TDZ Elev: 1 hPa Trans level: FL 180 Trans alt: 18000' 1. COMMUNICATIONS FAILURE: If no communications are received for approximately one minute while being vectored to final, 15 seconds while on ASR final approach, call TWR 118.1 and proceed VMC. If unable, proceed with a published IAP assigned by ATC. 2. Holding PANIL: Maximum IAS 210 kts.					

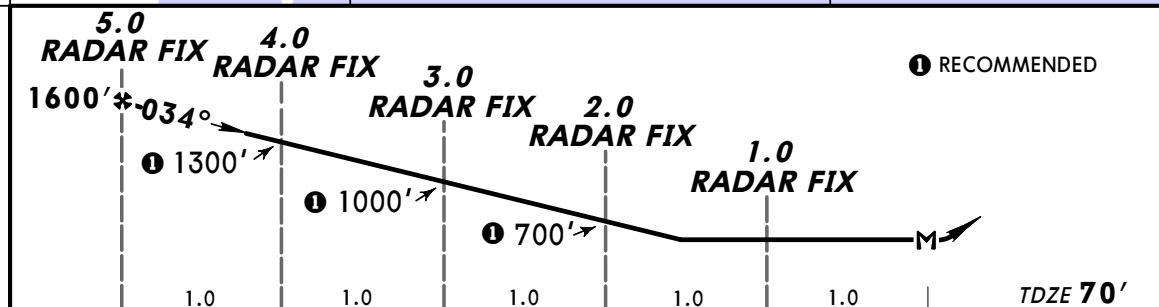
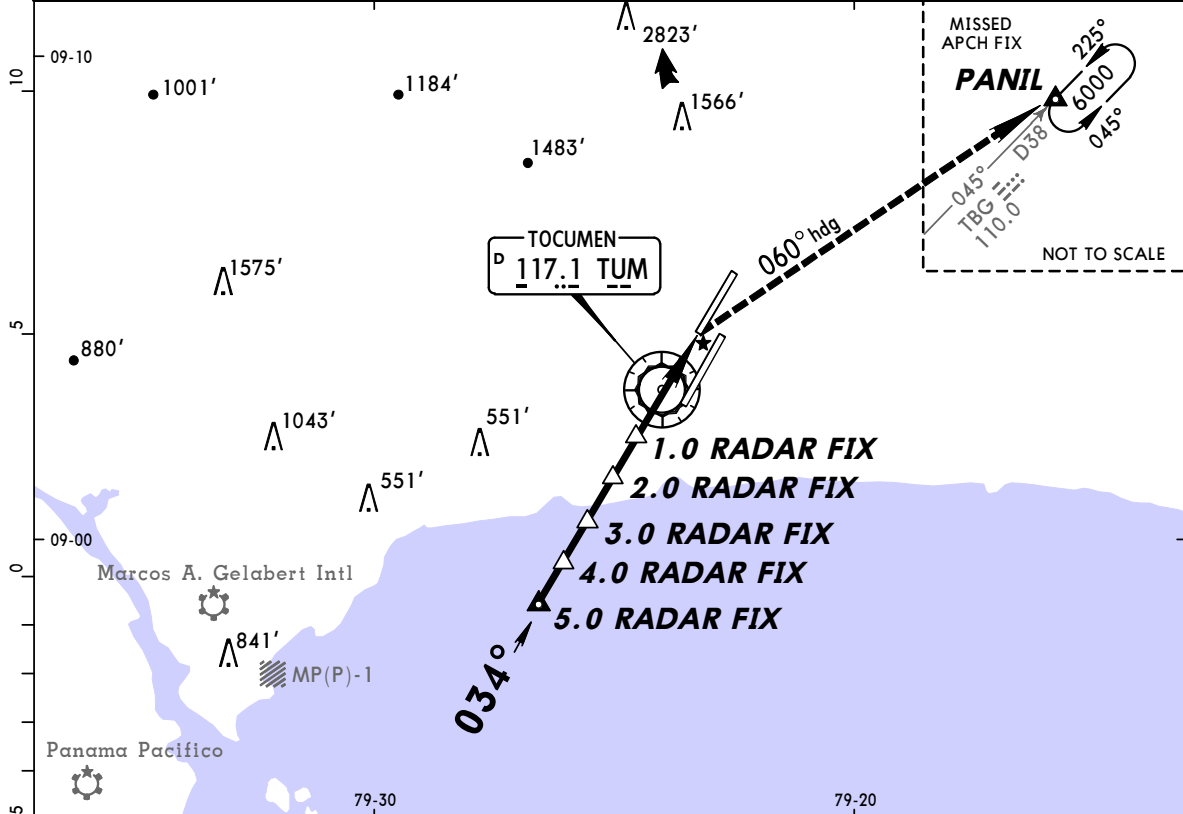


Gnd speed-Kts	60	80	100	120	140	160	ALSIF-I PAPI	6000' via 057° RT hdg	D PANIL
Rate of descent on final (feet/min)	320	420	520	620	720	820			
FAF to MAP	5.0	5:00	3:45	3:00	2:30	2:09	1:53		

STRAIGHT-IN LANDING		CEILING REQUIRED		CIRCLE-TO-LAND	
ASR 03R		ALS out		Max Kts	
MDA(H) 460' (432')					
CEILING-VISIBILITY				MDA(H) CEIL-VIS	
A	400' - 800m	400' - 1600m		90	540' (405') 500' - 1600m
B				120	600' (465') 500' - 1600m
C		400' - 2000m		140	600' (465') 500' - 2400m
D	400' - 1200m	400' - 2400m		165	700' (565') 600' - 3600m

MPTO/PTY TOCUMEN INTL **JEPPESEN PANAMA CITY, PANAMA**
 8 JUN 12 (18-2) **RADAR ASR Rwy 03L**

ATIS 127.7		PANAMA Approach (R) 119.7 121.2		TOCUMEN Tower 118.1	Ground 121.9
RADAR	Final Apch Crs 034°	Minimum Alt 5.0 RADAR FIX 1600' (1530')	MDA(H) 560' (490')	Apt Elev 135' TDZE 70'	<div style="border: 1px solid black; border-radius: 50%; width: 100px; height: 100px; display: flex; align-items: center; justify-content: center;"> No MSA Published </div>
MISSED APCH: Climbing RIGHT turn via heading 060° to 6000', direct to PANIL and hold.					
Alt Set: hPa TDZ Elev: 3 hPa Trans level: FL 180 Trans alt: 18000' 1. COMMUNICATIONS FAILURE: If no communications are received for approximately one minute while being vectored to final, 15 seconds while on ASR final approach, call TWR 118.1 and proceed VMC. If unable, proceed with a published IAP assigned by ATC. 2. Holding PANIL: Maximum IAS 210 kts.					



Gnd speed-Kts	60	80	100	120	140	160	HIALS PAPI 6000' RT via 060° hdg → PANIL
Rate of descent on final (feet/min)	300	400	500	600	700	800	
FAF to MAP	5.0	5:00	3:45	3:00	2:30	2:09	1:53

STRAIGHT-IN LANDING		CEILING REQUIRED		CIRCLE-TO-LAND	
ASR 03L		ALS out		Max Kts	MDA(H) CEIL-VIS
CEILING-VISIBILITY					
A	500' - 800m	500' - 1600m		90	560' (425') 500' - 1600m
B				120	600' (465') 500' - 1600m
C				140	600' (465') 500' - 3200m
D	500' - 1600m	500' - 2800m		165	700' (565') 600' - 3600m