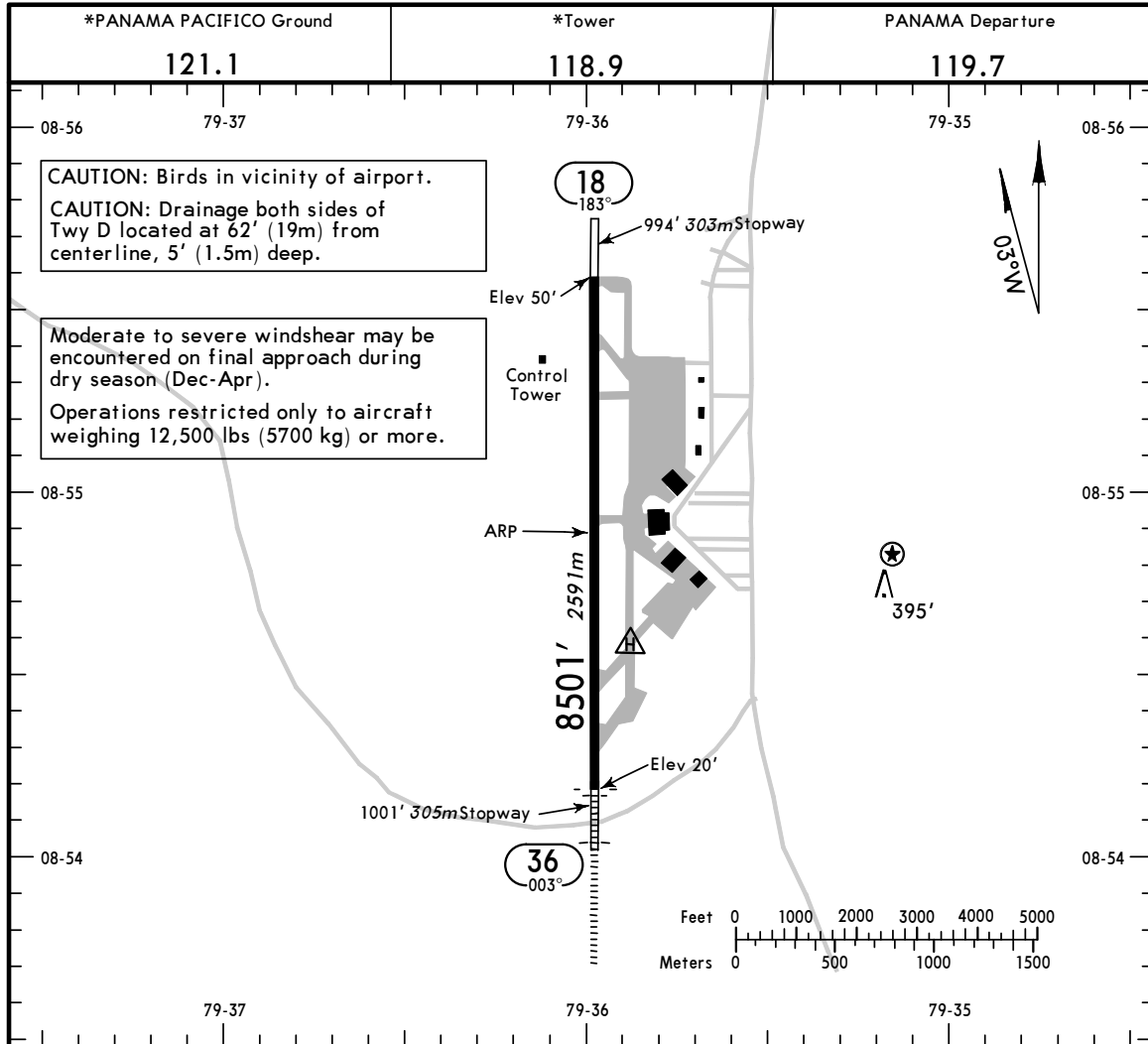


**MPPA/BLB**  
 Apt Elev **52'**  
 N08 54.9 W079 36.0

**JEPPESEN**  
 4 JAN 13 **(10-9)**

**BALBOA, PANAMA**  
 PANAMA PACIFICO



**ADDITIONAL RUNWAY INFORMATION**

RWY	MIRL REIL	ALSF-I	RVR	USABLE LENGTHS			WIDTH
				LANDING BEYOND Threshold	Glide Slope	TAKE-OFF	
18	MIRL REIL						148'
36	MIRL REIL ALSF-I		RVR				45m

**TAKE-OFF**

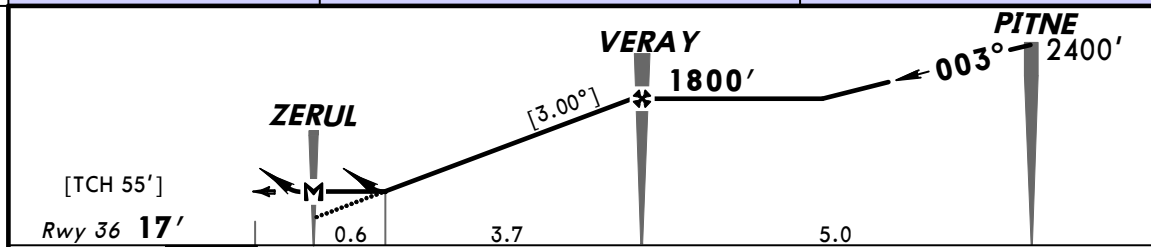
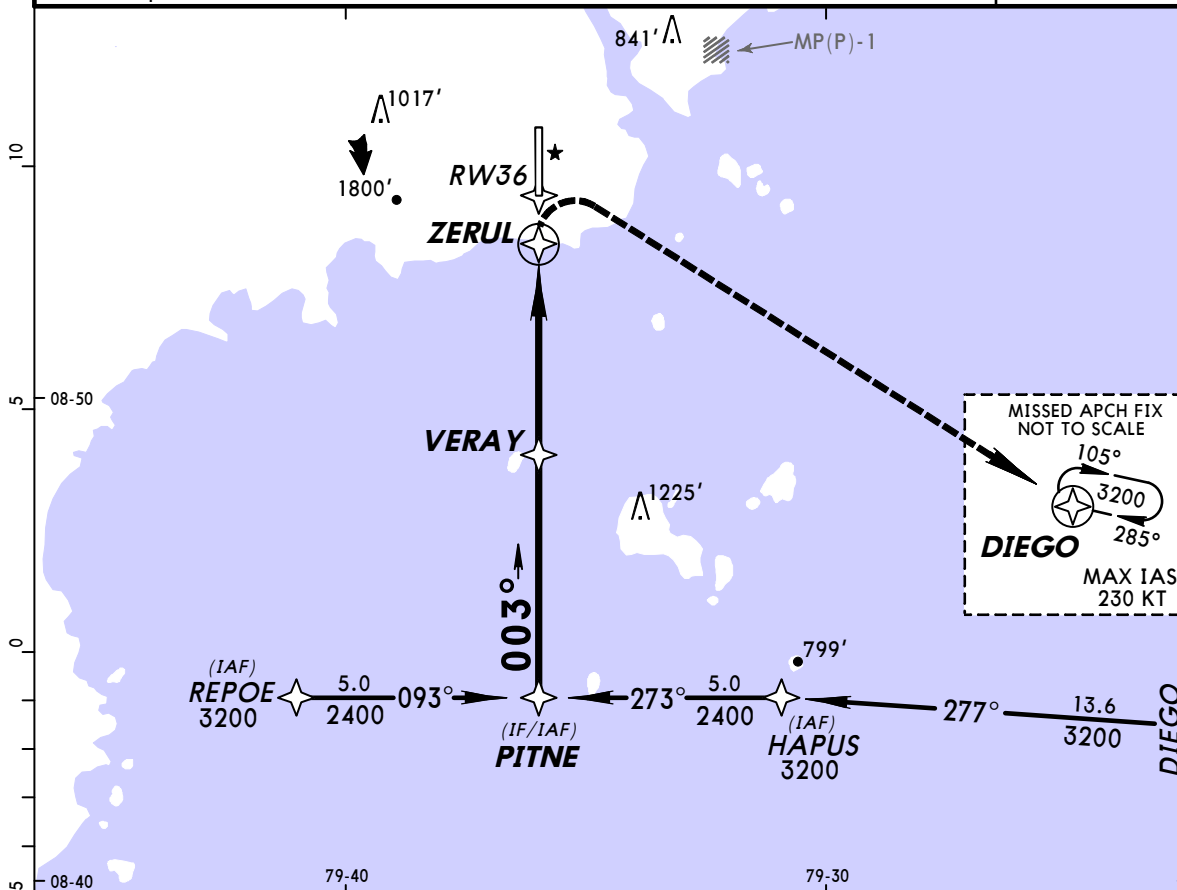
	AIR CARRIER (JAA)		AIR CARRIER (FAR 121)	
	LVP must be in force All Rwys RCLM (Day only) or RL	All Rwys RCLM (Day only) or RL	All Rwys Adequate Vis Ref	
A	RVR 250m	RVR 400m	2 Eng	400m
B			3 & 4 Eng	
C				
D	RVR 300m			

**MPPA/BLB**  
**PANAMA PACIFICO**

17 AUG 12 **(12-1)** Eff 23 Aug

**BALBOA, PANAMA**  
**RNAV (GNSS) Rwy 36**

PANAMA Approach <b>119.7</b>		*PANAMA PACIFICO Tower <b>118.9</b>		*Ground <b>121.1</b>	
RNAV	Final Apch Crs <b>003°</b>	Minimum Alt <b>VERAY</b> <b>1800' (1783')</b>	LNAV/VNAV DA(H) <b>597' (580')</b>	Apt Elev <b>52'</b>	5000'  MSA RW36
<b>MISSED APCH: Climbing RIGHT turn to 3200' direct to DIEGO and hold.</b>					
Alt Set: hPa    Rwy Elev: 1 hPa    Trans level: FL 180    Trans alt: 18000' 1. CAUTION: Concentrated bird activity daily. 2. If local altimeter setting not received, procedure not authorized.					



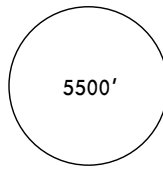
Gnd speed-Kts	60	80	100	120	140	160	REIL	ALSF-I 3200'	D → DIEGO
Descent Angle [3.00°]	320	426	533	640	747	853			
MAP at ZERUL									

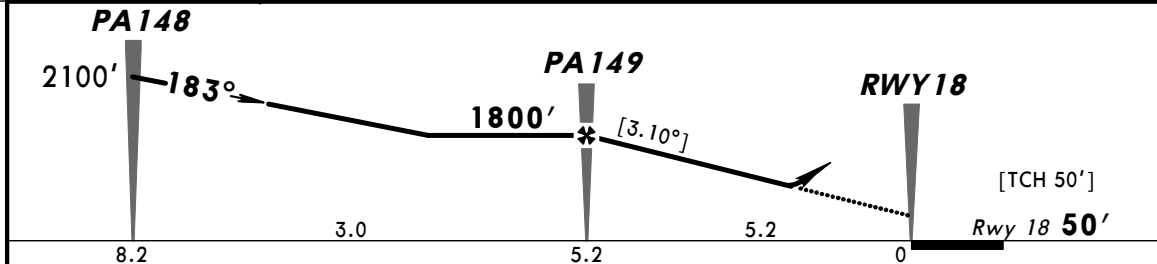
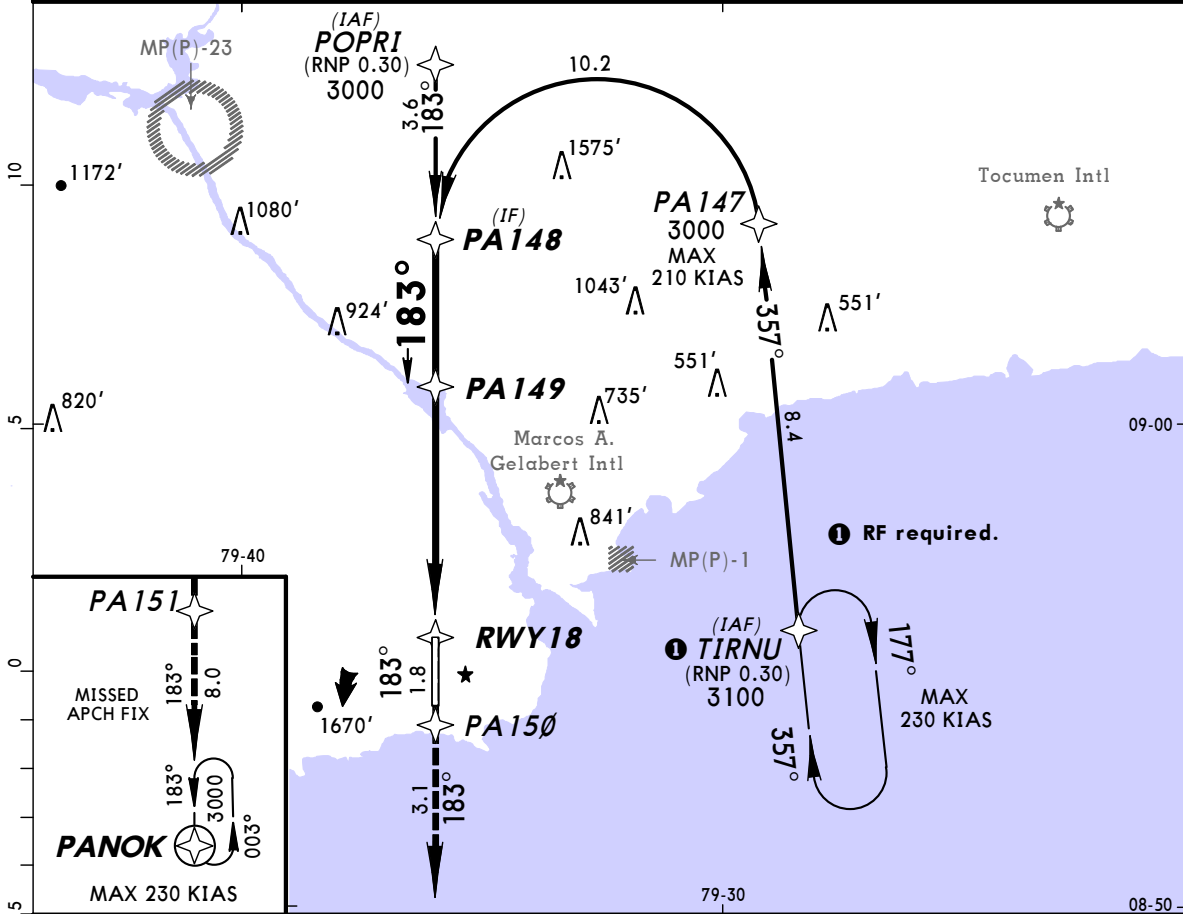
STRAIGHT-IN LANDING RWY36				CEILING REQUIRED	
LNAV/VNAV DA(H) <b>597' (580')</b>		LNAV MDA(H) <b>600' (583')</b>		CIRCLE-TO-LAND	
ALS out		ALS out		Not Authorized West of Rwy 18-36	
				MDA(H)	CEIL-VIS
A	3200m	2000m	Max Kts	90	720' (668') 670' - 2000m
B				120	720' (668') 670' - 2800m
C				140	720' (668') 670' - 3200m
D				165	720' (668') 670' - 3200m

**MPPA/BLB**  
**PANAMA PACIFICO**

**JEPPESEN**  
 1 MAR 13 **(12-20)**

**BALBOA, PANAMA**  
**RNAV (RNP) Rwy 18**

PANAMA Approach <b>119.7</b>		*PANAMA PACIFICO Tower <b>118.9</b>		*Ground <b>121.1</b>	
RNAV	Final Apch Crs <b>183°</b>	Minimum Alt <b>PA 149</b> <b>1800' (1750')</b>	RNP 0.10 DA(H) <b>519' (469')</b>	Apt Elev <b>52'</b> Rwy 18 <b>50'</b>	  MSA RWY18
<b>MISSED APCH:</b> Climb to 3000' on track 183° to PA150 and via track 183° to PA151 and via track 183° to PANOK and hold. ATC may issue alternate missed approach instructions. Missed approach required RNP level less than 1.0.					
Alt Set: hPa      Rwy Elev: 2 hPa      Trans level: By ATC      Trans alt: 18000' <b>1. SPECIAL AIRCRAFT AND AIRCREW AUTHORIZATION REQUIRED. 2. GPS required.</b> 3. For uncompensated Baro-VNAV system, procedure not authorized below 0°C (32°F) or above 39°C (102°F).					



Gnd speed-Kts	70	90	100	120	140	160	REIL	3000'	on 183°	PA150
Descent Angle [3.10°]	384	494	548	658	768	878				
MAP at DA										

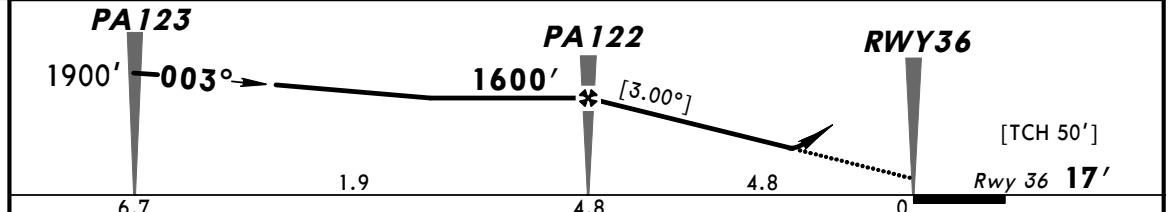
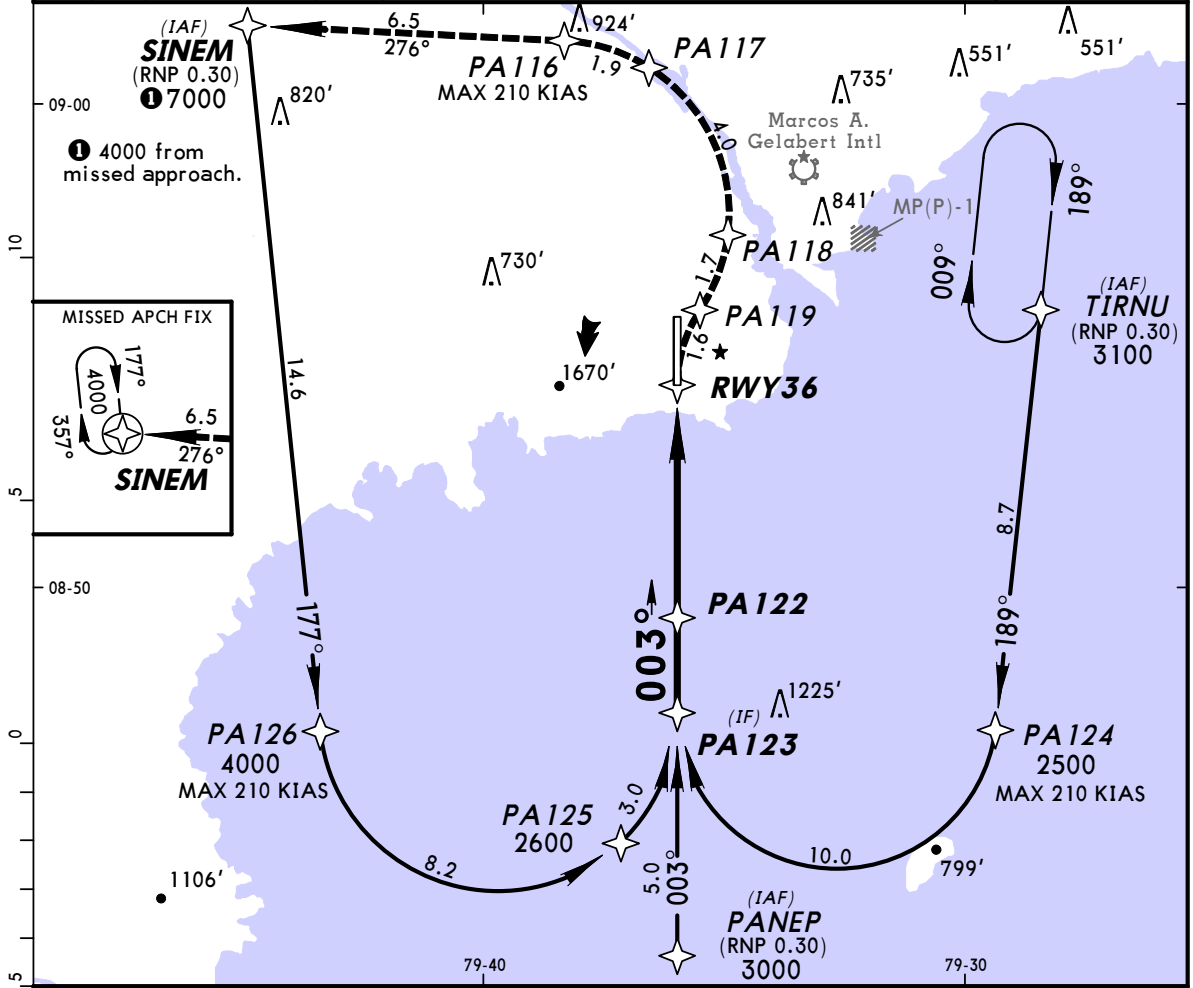
STRAIGHT-IN LANDING RWY 18		
RNP 0.10 DA(H) <b>519' (469')</b>	RNP 0.15 DA(H) <b>577' (527')</b>	RNP 0.30 DA(H) <b>1117' (1067')</b>
A		
B	2400m	6400m
C		
D		

**MPPA/BLB**  
**PANAMA PACIFICO**

**JEPPesen**  
 1 MAR 13 **(12-21)**

**BALBOA, PANAMA**  
**RNAV (RNP) Rwy 36**

PANAMA Approach 119.7		*PANAMA PACIFICO Tower 118.9		*Ground 121.1	
RNAV	Final Apch Crs <b>003°</b>	Minimum Alt <b>PA122</b> 1600' (1583')	RNP 0.15 DA(H) <b>386' (369')</b>	Apt Elev 52' Rwy 36 17'	
<b>MISSED APCH:</b> Climb to 4000' via RIGHT turn to PA119, then climbing LEFT turn to PA118, then LEFT turn to PA117 then LEFT turn to PA116 then on track 276° to SINEM and hold. Missed approach required RNP level less than 1.0.					5500'  MSA RWY36
Alt Set: hPa Rwy Elev: 1 hPa Trans level: By ATC Trans alt: 18000' <b>1. SPECIAL AIRCRAFT AND AIRCREW AUTHORIZATION REQUIRED. 2. RF and GPS required. 3. For uncompensated Baro-VNAV system, procedure not authorized below 0°C (32°F) or above 48°C (118°F).</b>					



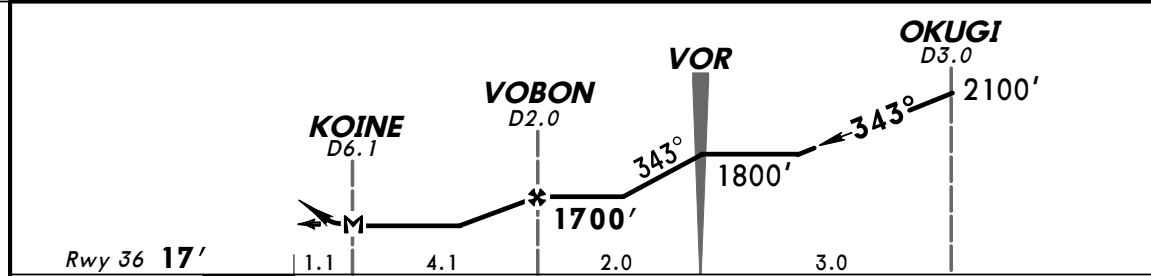
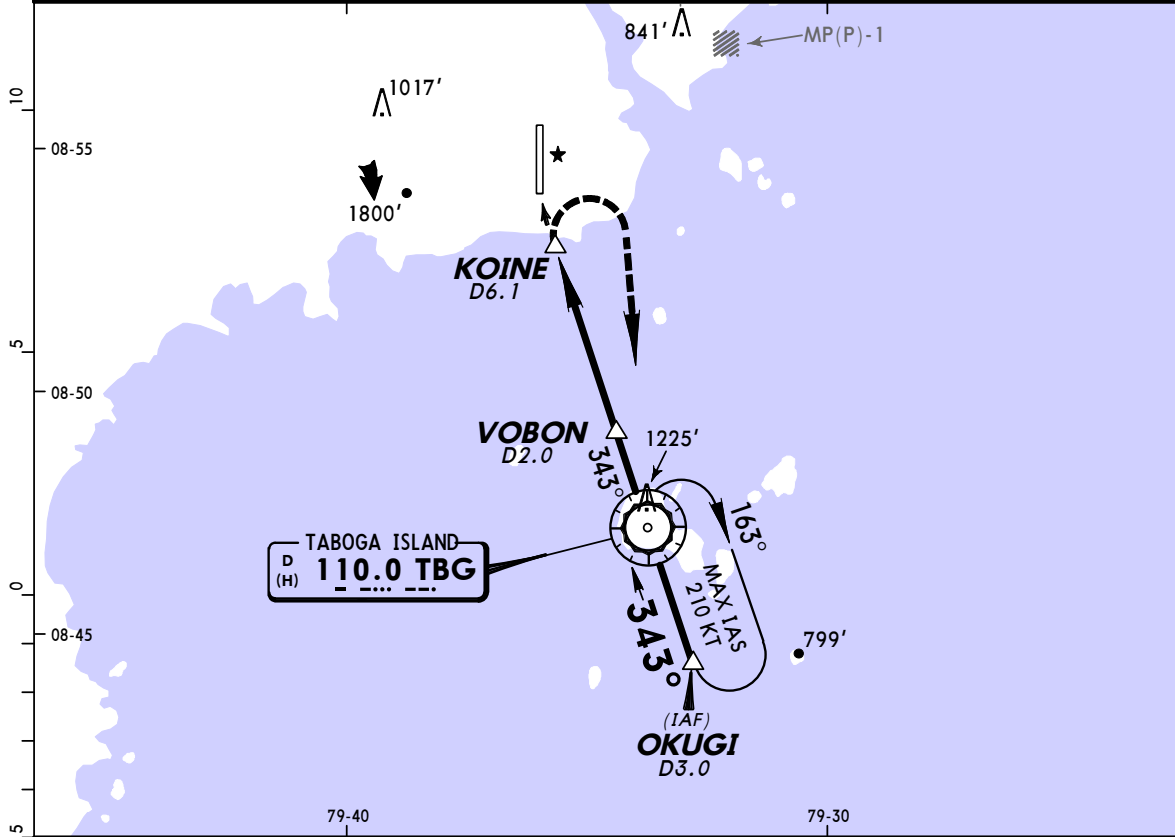
Gnd speed-Kts	70	90	100	120	140	160	ALSF-I REIL 4000' PA119 RT
Descent Angle [3.00°]	372	478	531	637	743	849	
MAP at DA							
RNP 0.15 DA(H) <b>386' (369')</b>				RNP 0.30 DA(H) <b>403' (386')</b>			
ALS out				ALS out			
A							
B	2000m						
C	2000m						
D							

**MPPA/BLB**  
**PANAMA PACIFICO**

**JEPPESEN**  
 17 AUG 12 **(13-1)** **Eff 23 Aug**

**BALBOA, PANAMA**  
**VOR DME Rwy 36**

PANAMA Approach <b>119.7</b>		*PANAMA PACIFICO Tower <b>118.9</b>		*Ground <b>121.1</b>	
VOR TBG <b>110.0</b>	Final Apch Crs <b>343°</b>	Minimum Alt <b>VOBON</b> <b>1700'</b> (1683')	MDA(H) <b>740'</b> (723')	Apt Elev <b>52'</b>	Rwy <b>36 17'</b>
<b>MISSED APCH: Climbing RIGHT turn to 3000' direct TBG VOR and hold.</b>					
Alt Set: hPa    Rwy Elev: 1 hPa    Trans level: FL 180    Trans alt: 18000' 1. CAUTION: Concentrated bird activity daily. 2. CAUTION: High terrain North and West of airport. 3. If local altimeter setting not received, procedure not authorized.					



Gnd Speed-Kts	60	80	100	120	140	160	ALSF-I REIL	3000'	D →	TBG 110.0
Rate of descent on final (feet/min)	316	421	527	632	737	843				
MAP at KOINE or FAF to MAP	4.1	4:06	3:05	2:28	2:03	1:45	1:32			

STRAIGHT-IN LANDING RWY 36		CEILING REQUIRED	CIRCLE-TO-LAND	
MDA(H) <b>740'</b> (723')		ALS out	Not Authorized West of Rwy 18-36	
	CEILING-VISIBILITY	Max Kts	MDA(H)	CEIL-VIS
A	710' - 2800m	90	740' (688')	710' - 2800m
B	710' - 3800m	120	740' (688')	710' - 3800m
C	710' - 4200m	140	740' (688')	710' - 4200m
D	710' - 4200m	165	740' (688')	710' - 4200m