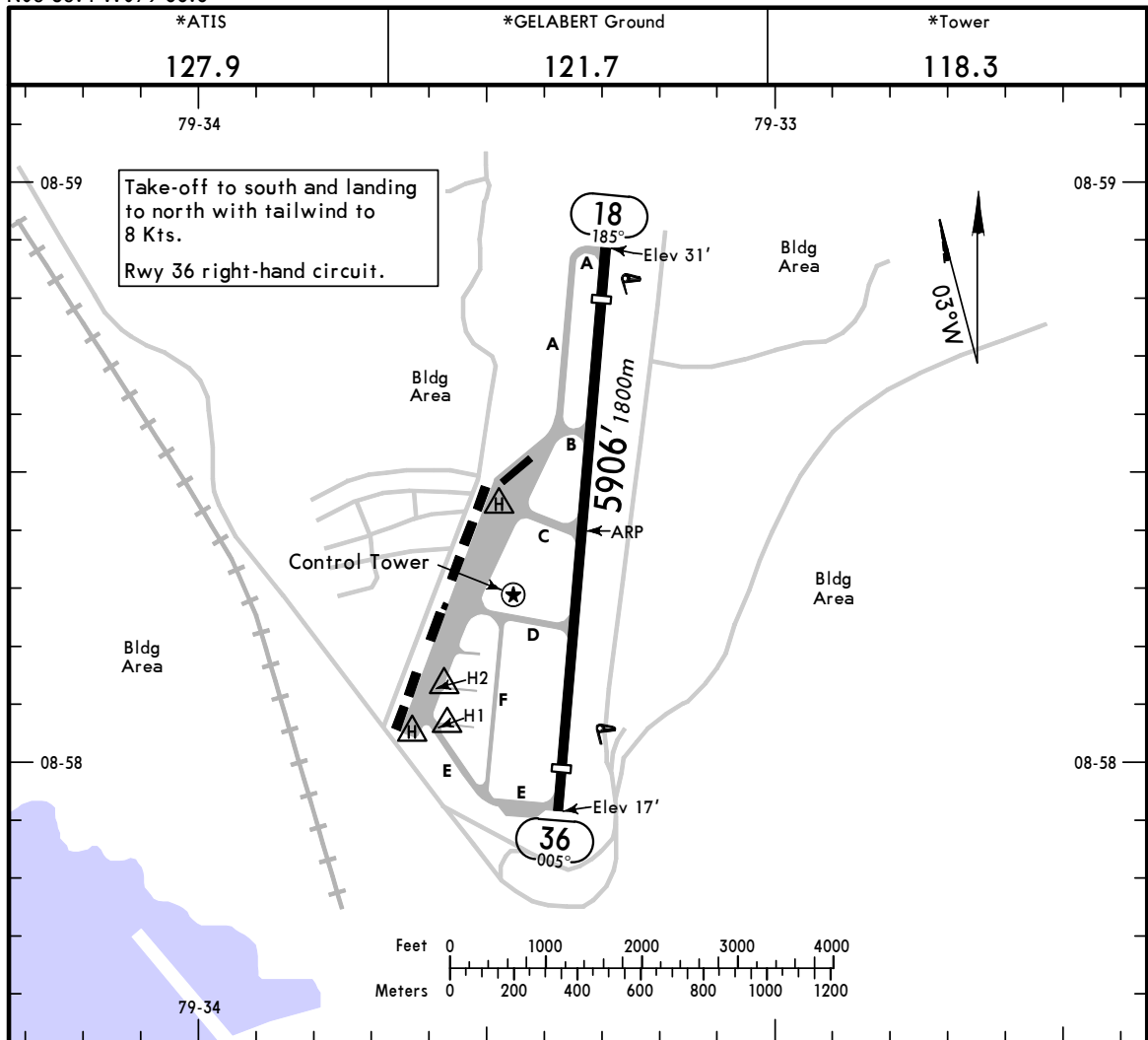


MPMG

Apt Elev **31'**
 N08 58.4 W079 33.3

JEPPESEN
 23 JUL 10
 Eff 29 Jul (20-9)

PANAMA CITY, PANAMA
 MARCOS A. GELABERT INTL



Take-off to south and landing to north with tailwind to 8 Kts.
 Rwy 36 right-hand circuit.

ADDITIONAL RUNWAY INFORMATION

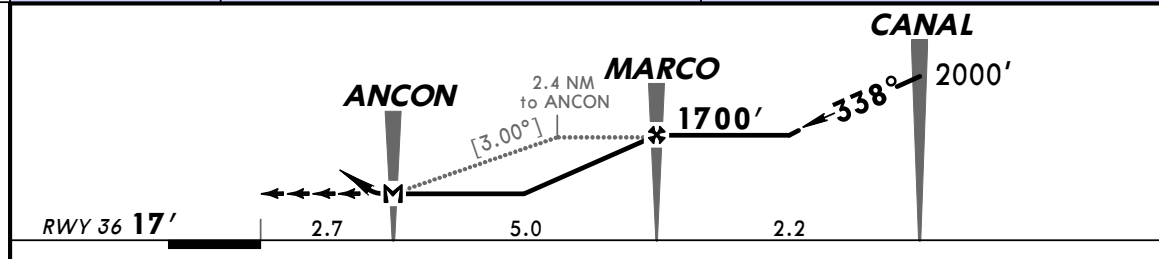
RWY		USABLE LENGTHS		TAKE-OFF	WIDTH
		LANDING BEYOND Threshold	Glide Slope		
18	MIRL PAPI-L (angle 4.33°)	5364'	1635m		98'
36	MIRL PAPI-L (angle 3.0°)	5463'	1665m		30m

TAKE-OFF

	AIR CARRIER (JAA)		AIR CARRIER (FAR 121)	
	LVP must be in force All Rwys RCLM (Day only) or RL	All Rwys RCLM (Day only) or RL	All Rwys Adequate Vis Ref	
A			2 Eng	400m
B	RVR 250m	RVR 400m	3 & 4 Eng	
C				
D	RVR 300m			

MPMG **JEPPESEN PANAMA CITY, PANAMA**
MARCOS A. GELABERT INTL 10 DEC 10 (22-1) **CAT A & B** **RNAV (GNSS) Rwy 36**

*ATIS 127.9		PANAMA Approach (R) 119.7 121.2		*GELABERT Tower 118.3	*Ground 121.7
RNAV	Final Apch Crs 338°	Minimum Alt MARCO 1700' (1683')	LNAV MDA(H) 780' (763')	Apt Elev 31' RWY 36 17'	5000'
MISSED APCH: Direct to FARFN at or above 1000', track 359° to MADEN climbing to 3500' and hold.					
Alt Set: hPa		TDZ Elev: 1 hPa		Trans level: By ATC	
				Trans alt: 18000'	
					MSA RW36

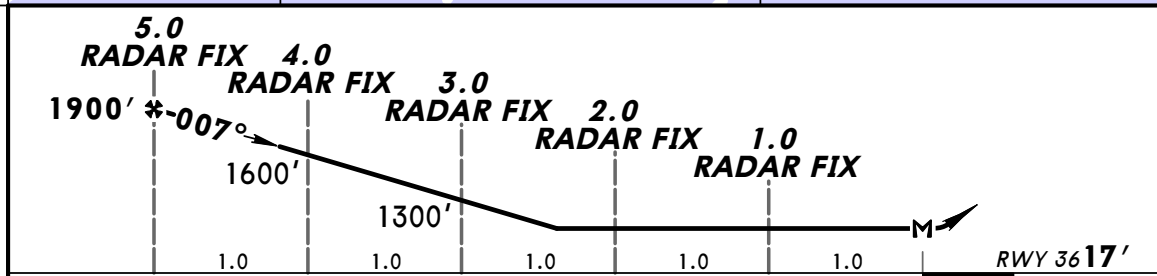
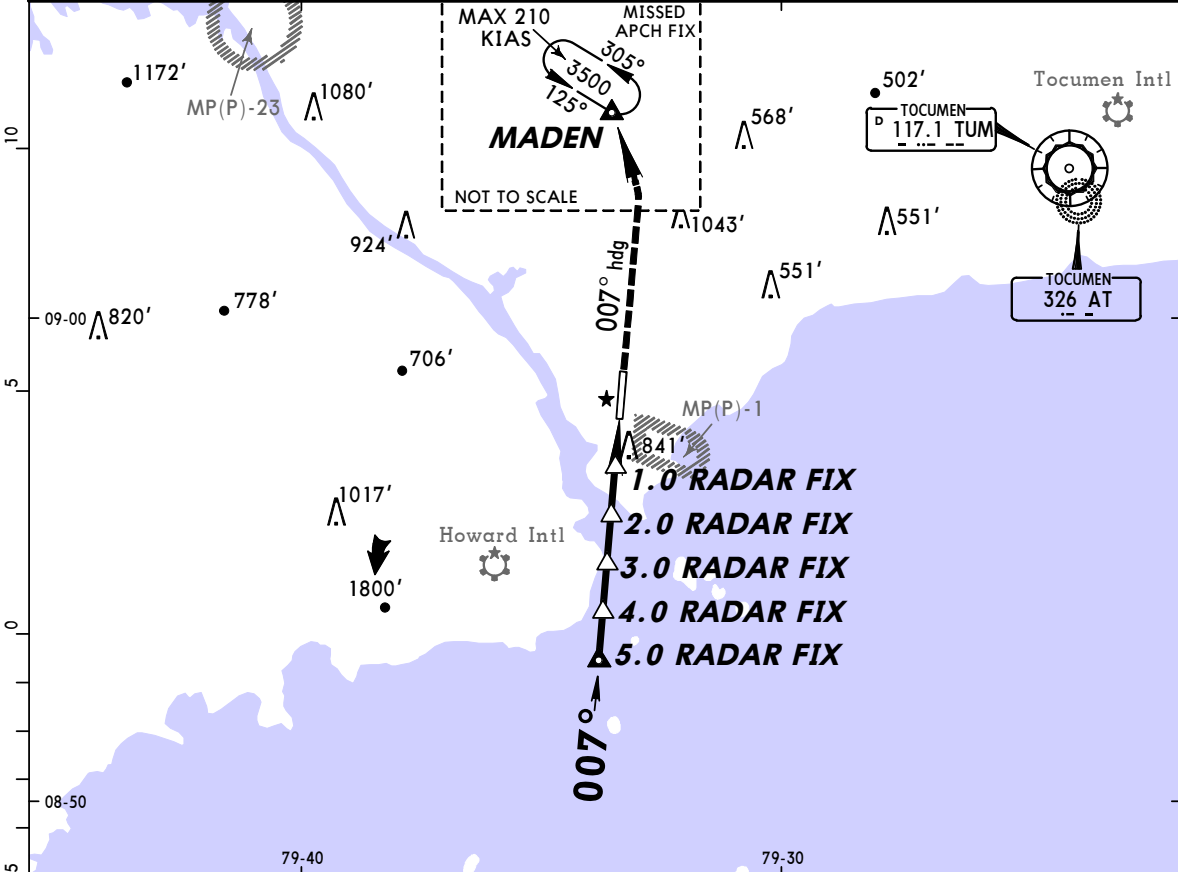


Gnd speed-Kts	60	80	100	120	PAPI-L	D → FARFN
Descent Angle	[3.00°]	319	425	531		
MAP at ANCON						

STRAIGHT-IN LANDING RWY 36		CEILING REQUIRED		CIRCLE-TO-LAND	
LNAV		MDA(H) 780' (763')			
CEILING-VISIBILITY		800'-3600m			
A		A		NA	
B		B			
C		C			
D	NA	D			

MPMG **JEPPESEN PANAMA CITY, PANAMA**
MARCOS A. GELABERT INTL 10 DEC 10 (28-1) **CAT A & B** **RADAR-1 ASR Rwy 36**

*ATIS 127.9	PANAMA Approach (R) 119.7 121.2		*GELABERT Tower 118.3	*Ground 121.7
RADAR	Final Apch Crs 007°	Minimum Alt 5.0 RADAR FIX 1900' (1883')	MDA(H) 1100' (1083')	Apt Elev 31' RWY 36 17'
MISSED APCH: Climb on 007° heading to 3500', direct to MADEN and hold.				<div style="border: 1px solid black; border-radius: 50%; padding: 10px; width: 100px; margin: auto;"> No MSA Published </div>
Alt Set: hPa TDZ Elev: 1 hPa Trans level: By ATC Trans alt: 18000' 1.COMMUNICATIONS FAILURE: If no transmission received for 15 seconds on final approach, call TWR 118.3 and proceed VFR.				



Gnd speed-Kts	60	80	100	120	PAPI-L	3500' on 007° hdg	D →	MADEN
Rate of descent on final (feet/min)	380	500	640	760				
FAF to MAP	5.0	5:00	3:45	3:00	2:30			

STRAIGHT-IN LANDING		CEILING REQUIRED	CIRCLE-TO-LAND	
ASR 36				
MDA(H) 1100' (1083')				
A	CEILING-VISIBILITY	Max Kts	MDA(H)	CEIL-VIS
B	1100'-2400m	90	1140' (1109')	1200'-2400m
C	NA	C	NA	
D	NA	D	NA	