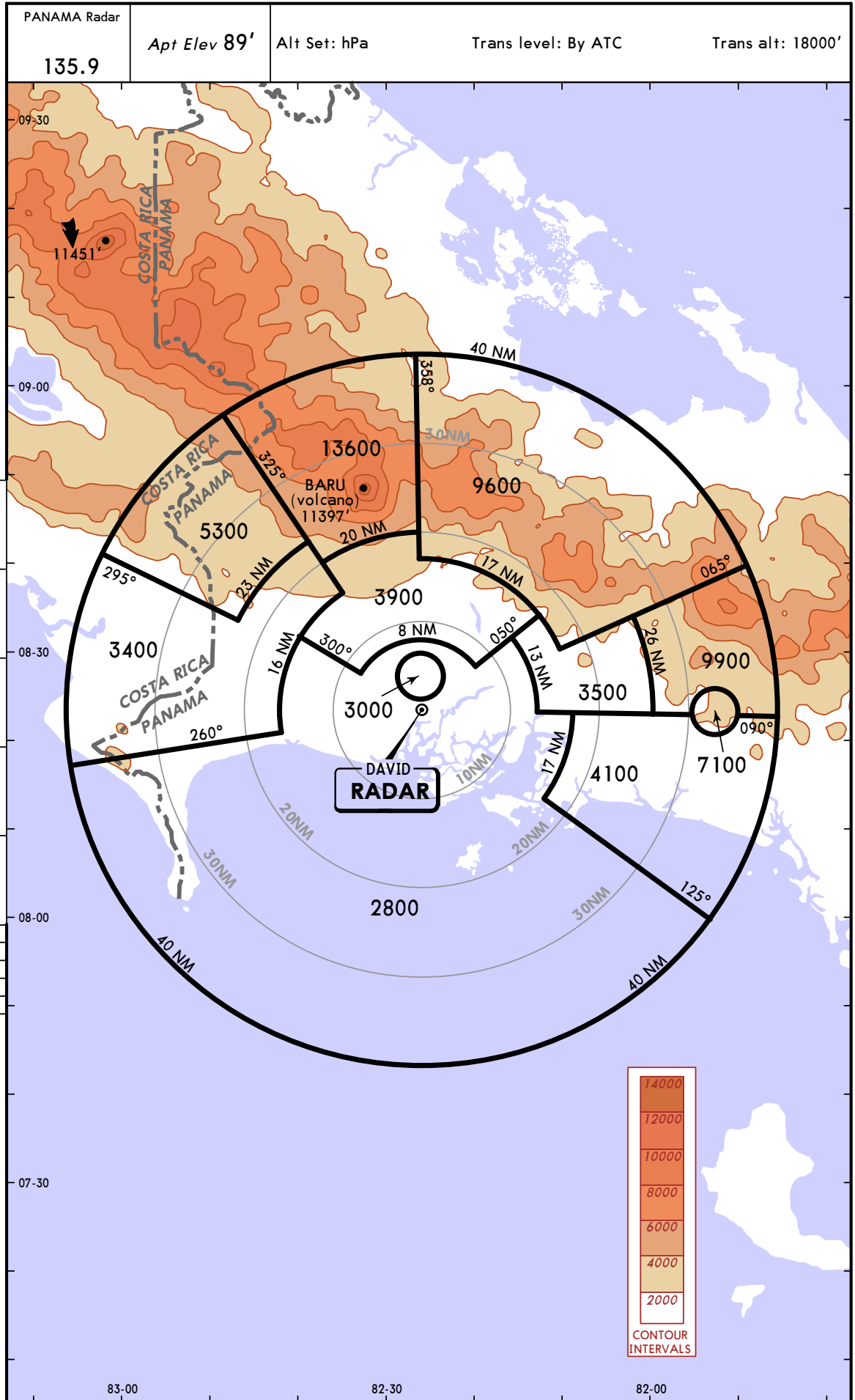


MPDA/DAV
ENRIQUE MALEK INTL

JEPPESEN
22 JUN 12 (10-1R)

DAVID, PANAMA
RADAR MINIMUM ALTITUDES

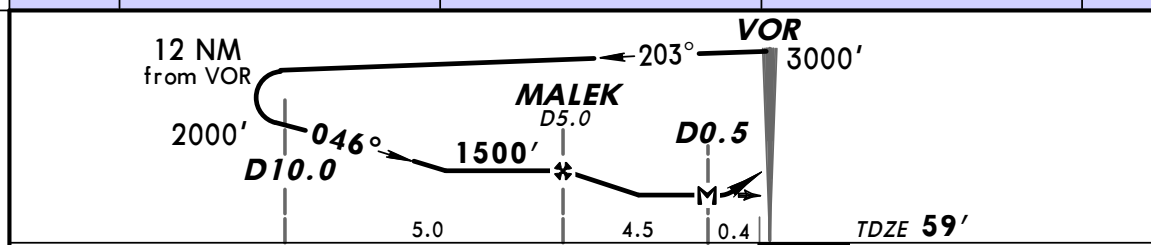
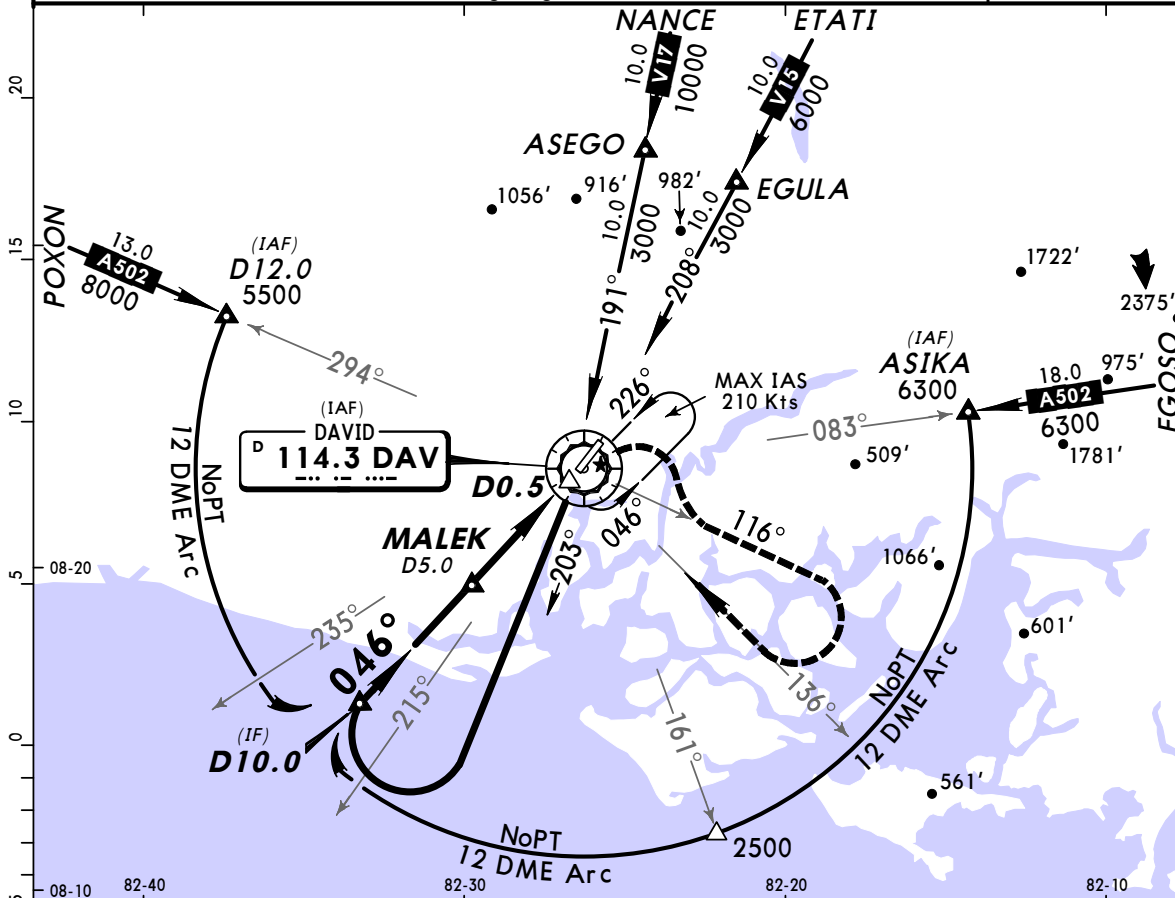
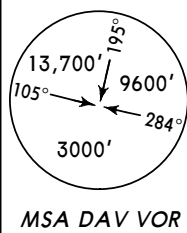


MPDA/DAV
ENRIQUE MALEK INTL

JEPPESEN
 13 APR 12 **(13-1)** **CAT A, B & C**

DAVID, PANAMA
VOR DME Rwy 04

PANAMA Approach		*MALEK Tower		*Ground	
119.7		118.7		121.7	
VOR DAV 114.3	Final Apch Crs 046°	Minimum Alt MALEK 1500' (1441')	MDA(H) 460' (401')	Apt Elev 89' TDZE 59'	
MISSED APCH: Climbing RIGHT turn outbound via DAV VOR R-116 to 3000', then direct to DAV VOR inbound via R-136 and hold.					
Alt Set: hPa TDZ Elev: 2 hPa Trans level: By ATC Trans alt: 18000' 1. If altimeter setting not available procedure not authorized. 2. In case of communications failure initiate procedure according to published chart and ATC instructions. 3. Pilot controlled lighting 133.5.					



Gnd speed-Kts	60	80	100	120	140	160	PAPI-R	3000' DAV via 114.3 RT R-116
Rate of descent on final (feet/min)	320	420	520	620	720	820		
MAP at D0.5								
MALEK to MAP	4.5	4:30	3:23	2:42	2:15	1:56	1:41	

STRAIGHT-IN LANDING RWY04		CEILING REQUIRED		CIRCLE-TO-LAND	
MDA(H) 460' (401')		Not Authorized Northwest of Rwy 04-22 Centerline			
	CEILING-VISIBILITY	Max Kts	MDA(H)	CEIL-VIS	
A	400' - 1600m	90	600' (511')	600' - 1600m	
B	400' - 1600m	120	640' (551')	600' - 1600m	
C	400' - 2000m	140	640' (551')	600' - 2400m	
D	NA	D	NA	NA	

CHANGES: Lighting note.

MPDA/DAV

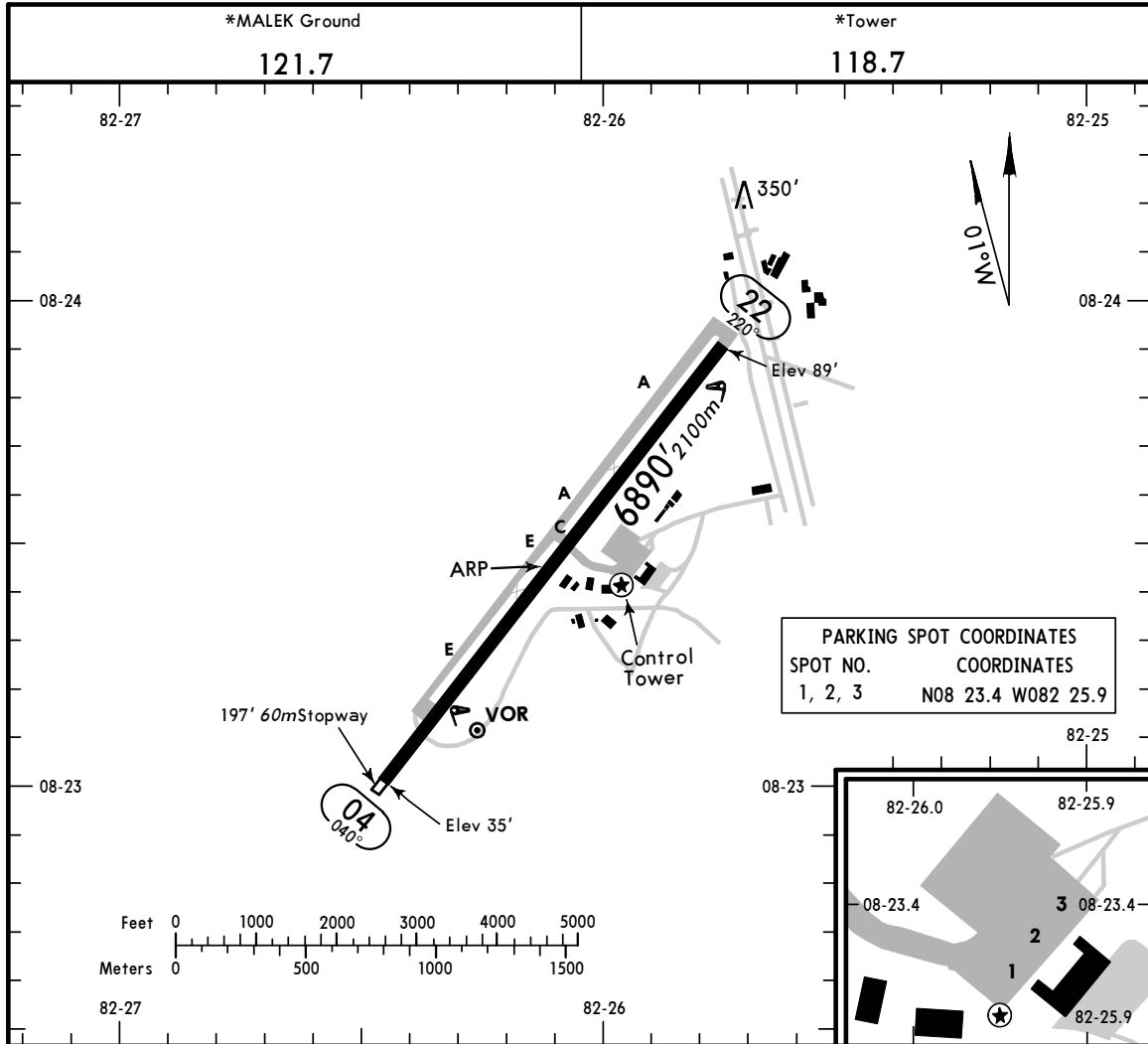
Apt Elev **89'**
 N08 23.5 W082 26.1



13 APR 12 **(13-1)**

DAVID, PANAMA

ENRIQUE MALEK INTL



ADDITIONAL RUNWAY INFORMATION

RWY		USABLE LENGTHS			WIDTH
		Threshold	Landing Beyond Glide Slope	TAKE-OFF	
04	1 RL 1 PAPI-R (angle 3.0°)				148'
22	1 RL 1 PAPI-L (angle 3.0°)				45m

1 Activate on 133.5 after 0300Z.

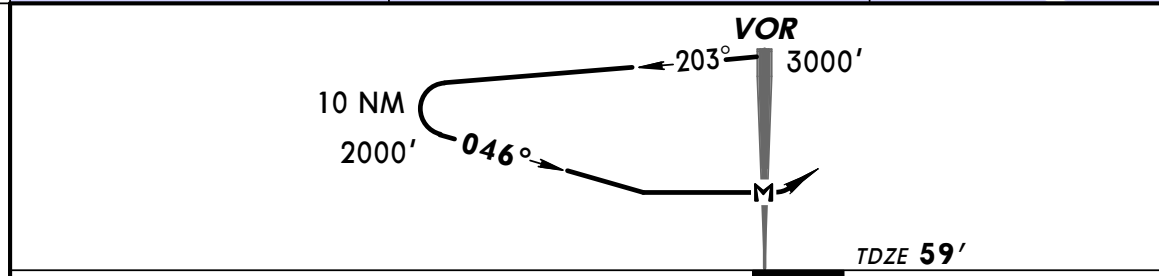
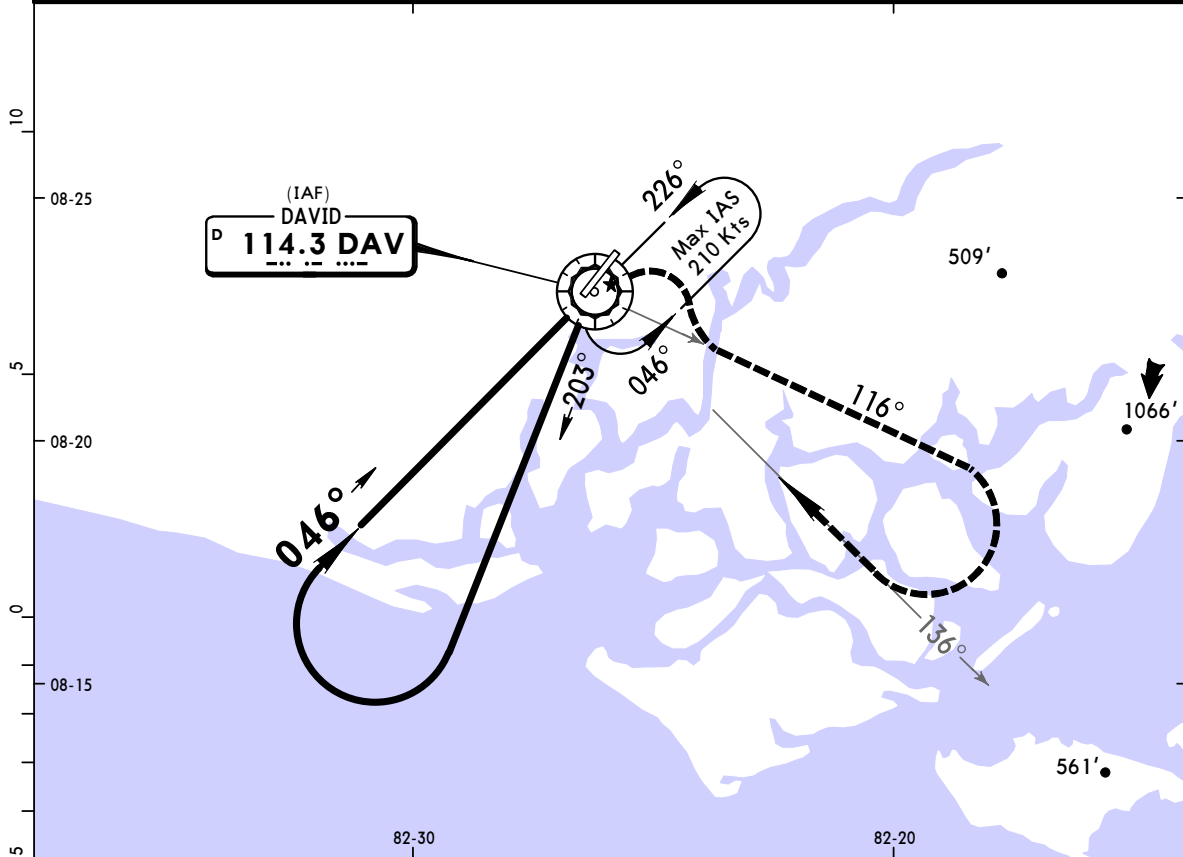
	TAKE-OFF			
	AIR CARRIER (JAA)		AIR CARRIER (FAR 121)	
	LVP must be in Force All Rwys RCLM (Day only) or RL	All Rwys RCLM (Day only) or RL	All Rwys Adequate Vis Ref	
A			2 Eng	400m
B	250m	400m	3 & 4 Eng	
C				
D	300m			

MPDA/DAV
ENRIQUE MALEK INTL

JEPPESEN
 13 APR 12 **(13-2)**

DAVID, PANAMA
VOR Rwy 04
CAT A, B & C

PANAMA Approach 119.7		*MALEK Tower 118.7		*Ground 121.7	
VOR DAV 114.3	Final Apch Crs 046°	No FAF	MDA(H) 560' (501')	Apt Elev 89' TDZE 59'	<p>MSA DAV VOR</p>
<p>MISSED APCH: Climbing RIGHT turn outbound via DAV VOR R-116 to 3000', then direct to DAV VOR inbound via R-136 and hold.</p> <p>Alt Set: hPa TDZ Elev: 2 hPa Trans level: By ATC Trans alt: 18000'</p> <p>1. If altimeter setting not available procedure not authorized. 2. In case of communications failure initiate procedure according to published chart and ATC instructions. 3. Pilot controlled lighting 133.5.</p>					



MAP at VOR					PAPI-R	3000' DAV via 114.3 RT R-116
------------	--	--	--	--	--------	---

STRAIGHT-IN LANDING RWY04		CEILING REQUIRED		CIRCLE-TO-LAND	
MDA(H) 560' (501')		Not Authorized Northwest of Rwy 04-22 Centerline			
CEILING-VISIBILITY		Max Kts	MDA(H)	CEIL-VIS	
A	500' - 1600m	90	600' (511')	600' - 1600m	
B	500' - 1600m	120	640' (551')	600' - 1600m	
C	500' - 2400m	140	640' (551')	600' - 2400m	
D	NA	D	NA	NA	

CHANGES: Lighting note.