

SID

JEPPESEN

2 JAN 98

10-3

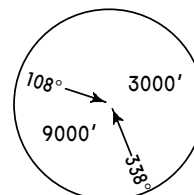
BOCAS DEL TORO, PANAMA
 BOCAS DEL TORO INTL

TRANS LEVEL: BY ATC
 TRANS ALT: 18000'

GEMER ONE DEPARTURE
 (RWYS 08, 26)

This SID requires take-off minimums of:
 Rwy 08: 2 engines: 400' ceiling, 1600m visibility;
 3 or more engines: 400' ceiling, 800m visibility.
 Rwy 26: 2 engines: 200' ceiling, 1600m visibility;
 3 or more engines: 200' ceiling, 800m visibility.
 and the following minimum climb rate from
 take-off to:
 Rwy 08: 200'.
 Rwy 26: Crossing BDT VOR.

Gnd speed-Kts	75	100	150	200	250	300
Rwy 08 V/V (fpm)	438	583	875	1167	1458	1750
Rwy 26 V/V (fpm)	263	350	525	700	875	1050

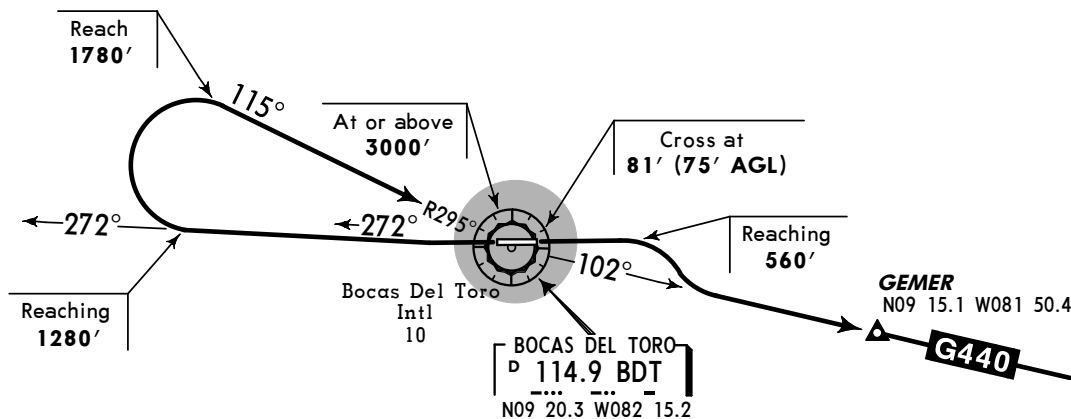


MSA
 BDT VOR

DEPARTURE

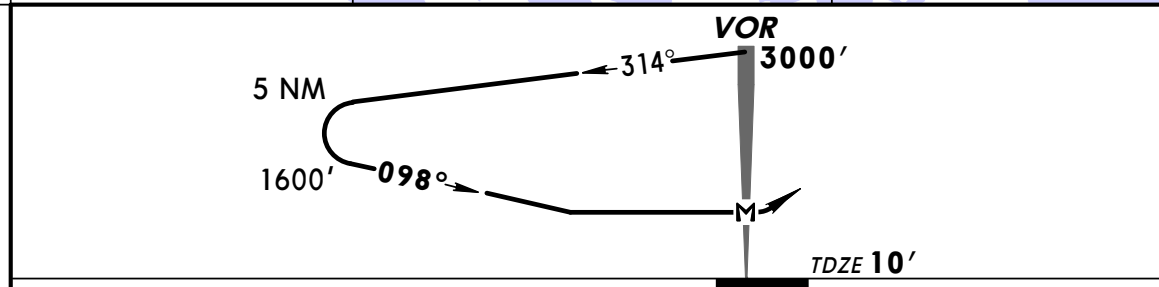
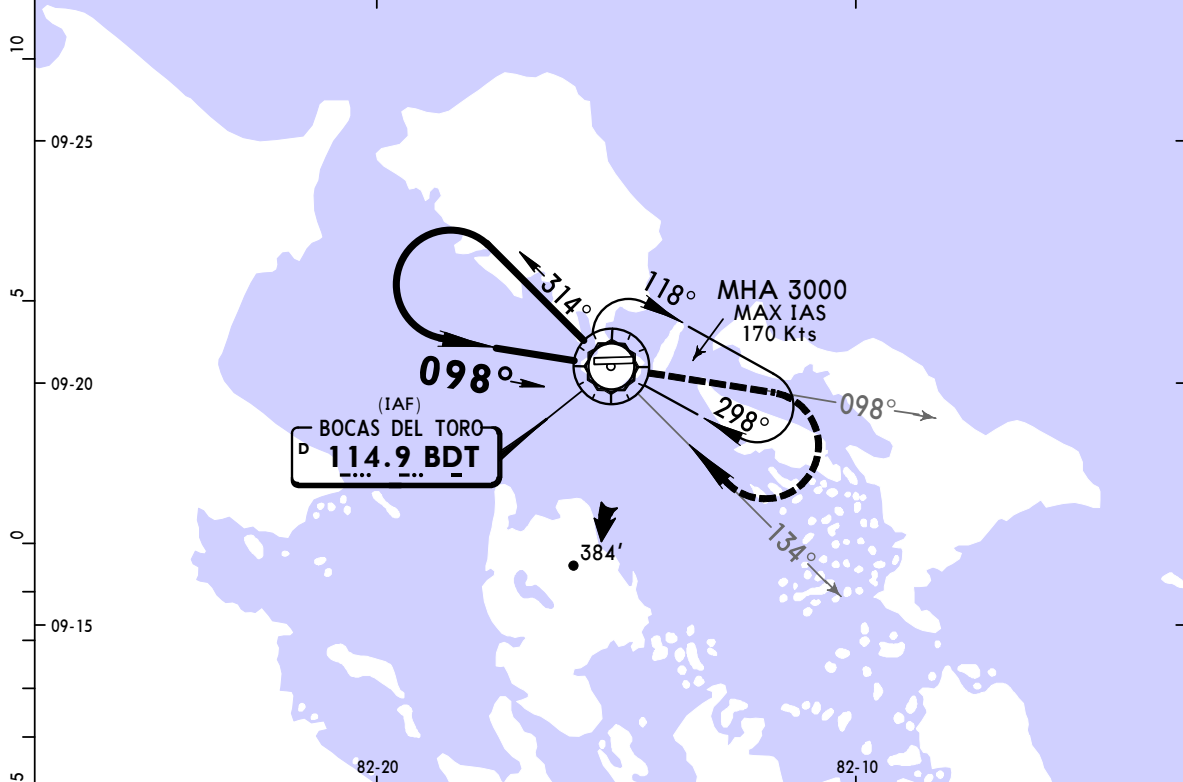
Rwy 08: Cross Rwy threshold at 81' (75' AGL), MAINTAIN runway heading and climb until reaching 560', turn RIGHT to intercept BDT R-102 (G440), then continue in accordance with ATC instructions.

Rwy 26: MAINTAIN runway heading until intercepting BDT R-272 and proceed climb until reaching 1280', turn RIGHT via BDT R-295 direct to BDT VOR, cross BDT VOR at or above 3000', continue in accordance with ATC instructions.



MPBO/BOC **JEPPESEN BOCAS DEL TORO, PANAMA**
BOCAS DEL TORO INTL 2 MAR 12 (13-1) **CAT A & B** **VOR Rwy 08**

BRIEFING STRIP™	PANAMA Control		*BOCAS Tower		*Ground
	NORTH 125.5	SOUTH 133.0	118.4		121.6
	VOR BDT 114.9	Final Apch Crs 098°	No FAF	MDA(H) 580' (570')	Apt Elev 10' TDZE 10'
MISSED APCH: Climb outbound via BDT VOR R-098 until reaching 1500', turn RIGHT inbound via BDT VOR R-134 climbing to 3000' direct BDT VOR and hold.					
Alt Set: hPa TDZ Elev: 0 hPa Trans level: By ATC Trans alt: 18000' 1. If altimeter setting not available, procedure not authorized. 2. In case of communications failure continue with instructions from ATC and published procedure.					



				1500'	BDT	3000'	BDT
				↑	via 114.9	RT	via 114.9
					R-098		R-134

STRAIGHT-IN LANDING RWY 08				CEILING REQUIRED		CIRCLE-TO-LAND	
MDA(H) 580' (570')							
CEILING-VISIBILITY				Max Kts	MDA(H)	CEIL-VIS	
A	600' - 1600m			90	580' (570')	600' - 1600m	
B				120			
C	NA			C	NA		
D				D			

MPBO/BOC

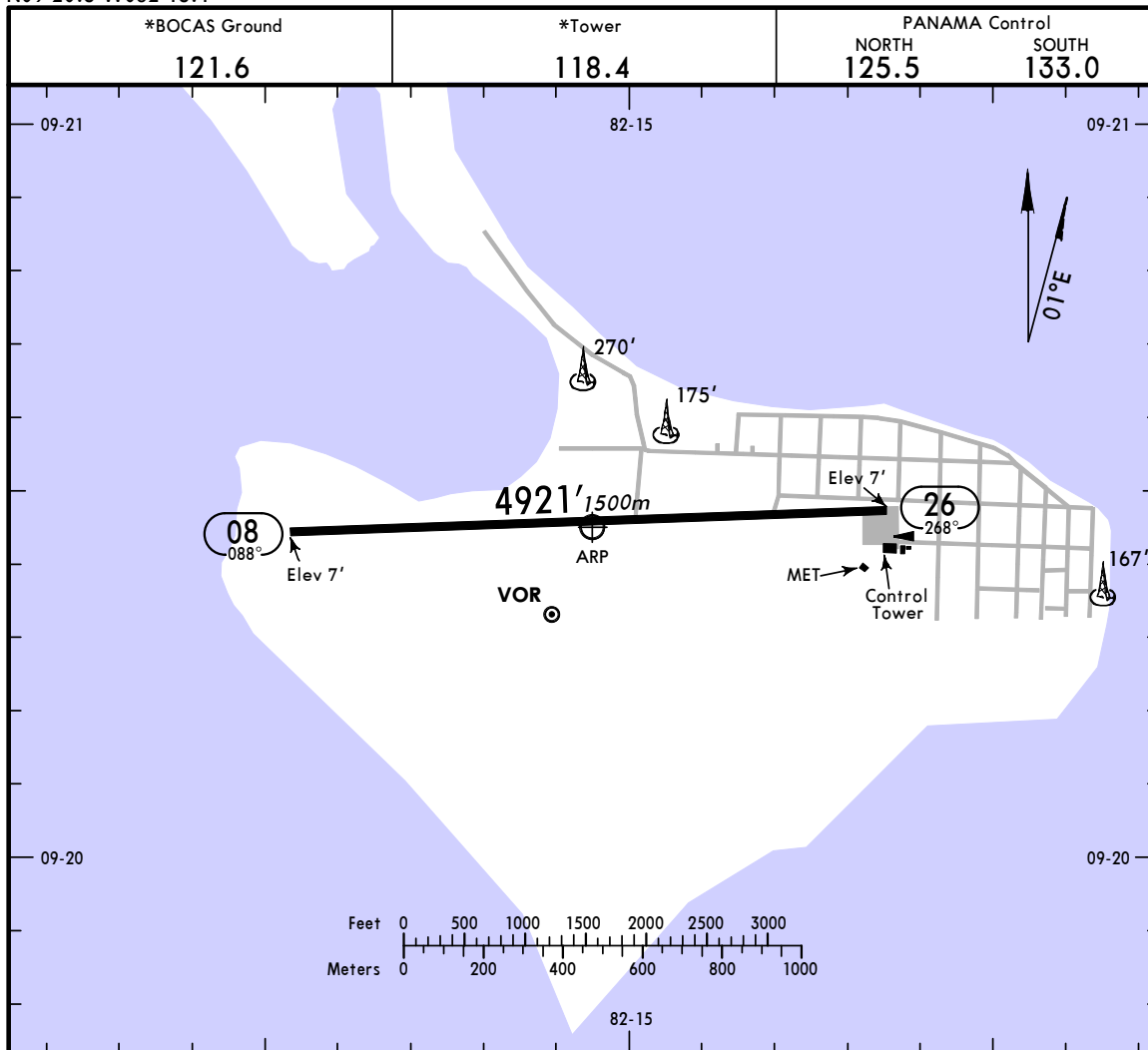
Apt Elev **10'**
 N09 20.5 W082 15.1



JEPPESEN BOCAS DEL TORO, PANAMA

2 MAR 12 **(13-1)**

BOCAS DEL TORO INTL



ADDITIONAL RUNWAY INFORMATION

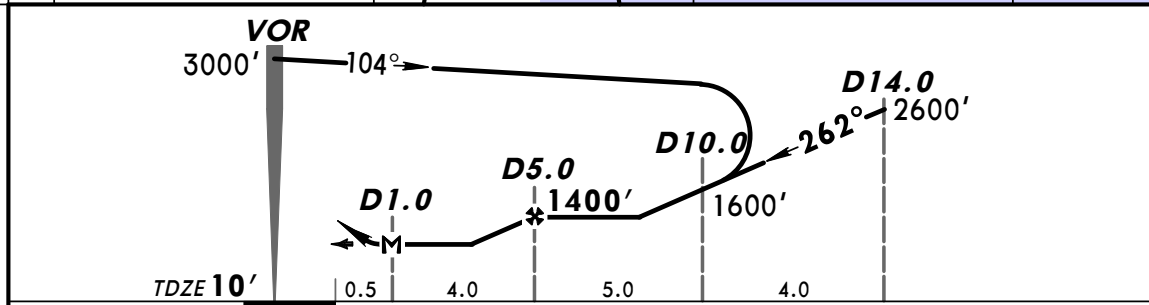
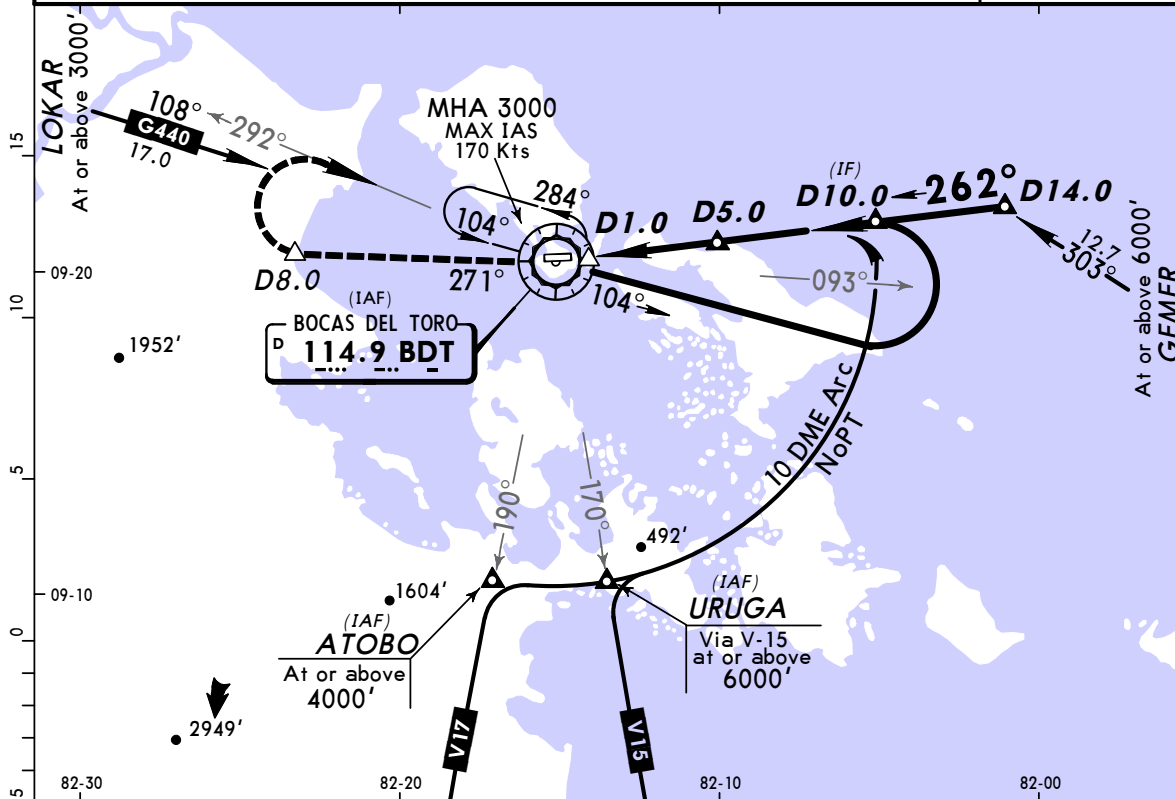
RWY	USABLE LENGTHS	LANDING BEYOND		TAKE-OFF	WIDTH
		Threshold	Glide Slope		
08 26	RL				66' 20m

TAKE-OFF

	Rwy 26	Rwy 08
2 Eng	200' - 1600m	400' - 1600m
3 & 4 Eng	200' - 800m	400' - 800m

MPBO/BOC **JEPPESEN BOCAS DEL TORO, PANAMA**
BOCAS DEL TORO INTL 2 MAR 12 **(13-2)** **CAT A & B** **VOR DME Rwy 26**

BRIEFING STRIP™	PANAMA Control		*BOCAS Tower		*Ground
	NORTH 125.5	SOUTH 133.0	118.4		121.6
	VOR BDT 114.9	Final Apch Crs 262°	Minimum Alt D5.0 1400' (1390')	MDA(H) 600' (590')	Apt Elev 10' TDZE 10'
<p>MISSED APCH: Climb outbound via BDT VOR R-271 until reaching at or above 1500' at D8.0, turn RIGHT and climb to 3000' via BDT VOR R-292 direct BDT VOR and hold.</p>					
<p>Alt Set: hPa TDZ Elev: 0 hPa Trans level: By ATC Trans alt: 18000' 1. If altimeter setting not available, procedure not authorized. 2. In case of communications failure continue with instructions from ATC and published procedure.</p>					

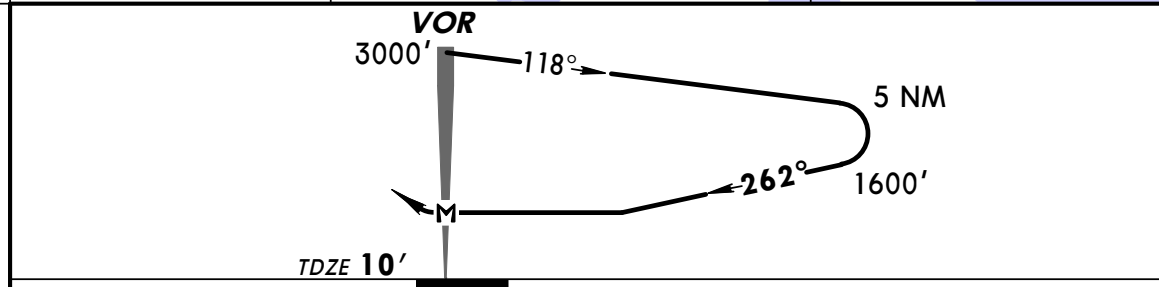
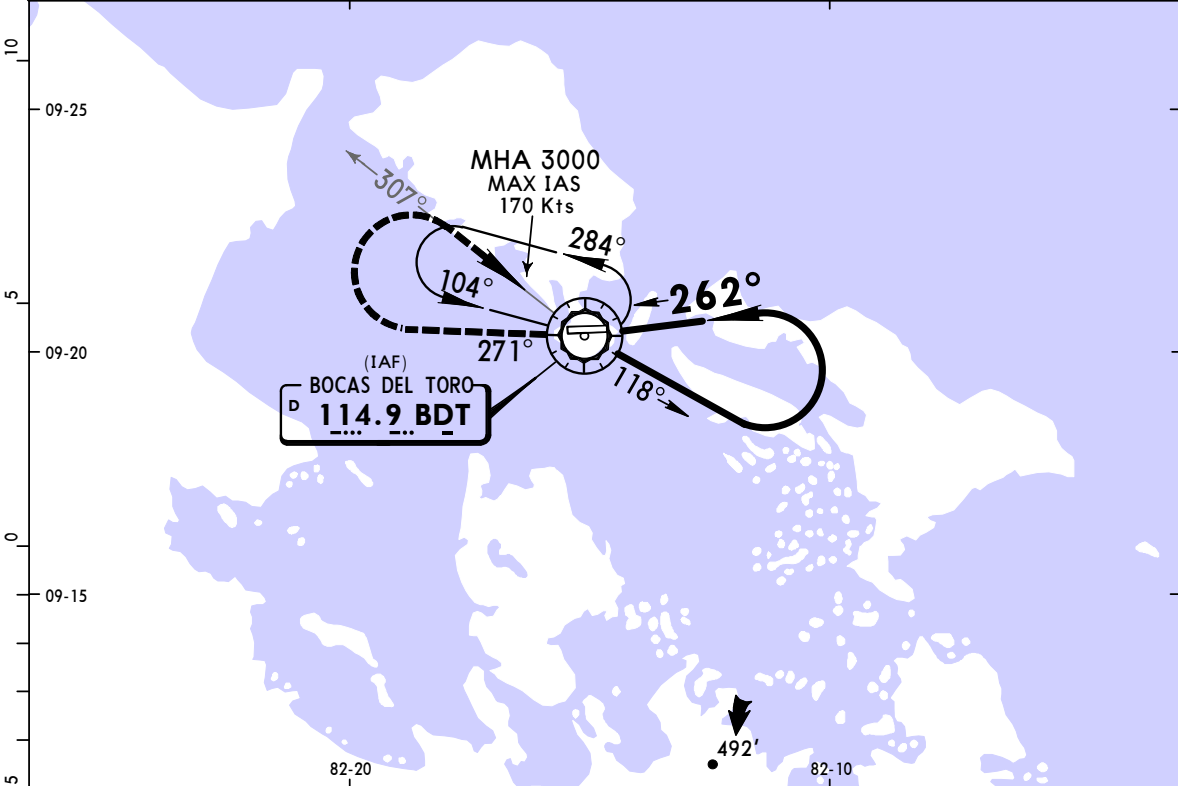
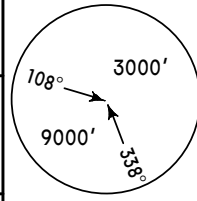


Gnd speed-Kts	60	80	100	120	1500' BDT ↑ via 114.9 R-271 D8.0	
Rate of descent on final (feet/min)	320	420	520	620		
MAP at D1.0 or D5.0 to MAP	4.0	4:00	3:00	2:24		2:00

STRAIGHT-IN LANDING RWY 26		CEILING REQUIRED	CIRCLE-TO-LAND	
MDA(H) 600' (590')		Max Kts	MDA(H)	CEIL-VIS
A	CEILING-VISIBILITY	90	600' (590')	600' - 1600m
B	600' - 1600m	120		
C	NA	C	NA	
D		D		

MPBO/BOC **JEPPESEN BOCAS DEL TORO, PANAMA**
BOCAS DEL TORO INTL 2 MAR 12 (13-3) **CAT A & B** **VOR Rwy 26**

BRIEFING STRIP™	PANAMA Control NORTH 125.5 SOUTH 133.0		*BOCAS Tower 118.4		*Ground 121.6
	VOR BDT 114.9	Final Apch Crs 262°	No FAF	MDA(H) 600' (590')	Apt Elev 10' TDZE 10'
	<p>MISSED APCH: Climb outbound via BDT VOR R-271 until reaching at or above 1500', turn RIGHT inbound via BDT VOR R-307 and climb to 3000' direct to BDT VOR and hold.</p> <p>Alt Set: hPa TDZ Elev: 0 hPa Trans level: By ATC Trans alt: 18000' 1. If altimeter setting not available, procedure not authorized. 2. In case of communications failure continue with instructions from ATC and published procedure.</p>				



MAP at VOR	1500' BDT via 114.9 R-271	3000' BDT via 114.9 RT R-307
------------	---------------------------	------------------------------

STRAIGHT-IN LANDING RWY 26		CEILING REQUIRED	CIRCLE-TO-LAND	
MDA(H) 600' (590')		Max Kts	MDA(H)	CEIL-VIS
A	CEILING-VISIBILITY	90	600' (590')	600' - 1600m
B	600' - 1600m	120		
C	NA	C	NA	
D		D		