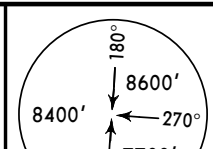


MHTG/TGU
TONCONTIN INTL

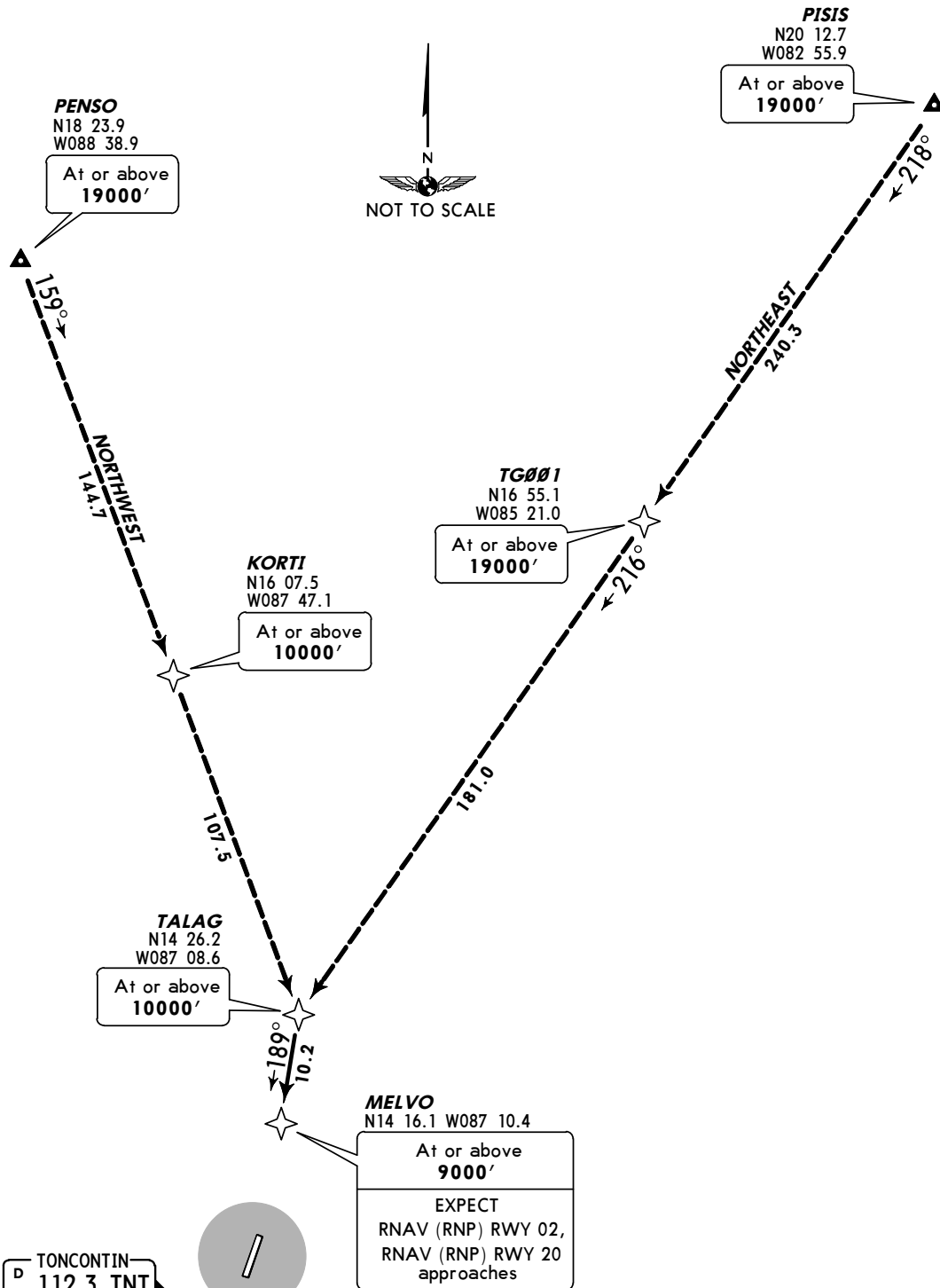
JEPPESEN
 25 NOV 11 **10-2**

TEGUCIGALPA, HONDURAS

RNAV STAR

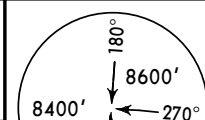
<p>*ATIS 127.75</p>	<p>Apt Elev 3297'</p>	<p>Alt Set: hPa Trans level: FL200 Trans alt: 19500' 1. GPS required. 2. RNP 2.0. 3. RADAR required. 4. DME/DME not required.</p>	
---------------------------------	-----------------------------------	---	---

NORTH RNAV ARRIVAL [NORTH]
 (RWYS 02/20)



MHTG/TGU
TONCONTIN INTL

JEPPESEN TEGUCIGALPA, HONDURAS
25 NOV 11 (10-2A) **RNAV STAR**

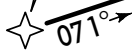
*ATIS 127.75	Apt Elev 3297'	Alt Set: hPa Trans level: FL200 Trans alt: 19500' 1. GPS required. 2. RNP 2.0. 3. DME/DME not required.	
-----------------	-------------------	--	---

WEST RNAV ARRIVAL [WEST]



VITAN
N13 51.7
W087 45.0

At or above
10000'



32.0

TONCONTIN
P 112.3 TNT
N14 01.7 W087 13.7
(FLY OVER)

At or above
8000'



Direct distance from TNT to:
Toncontin Intl **2 NM**

MHTG/TGU
 TONCONTIN INTL

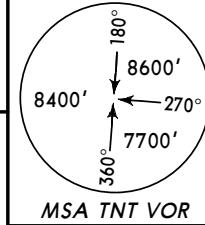
JEPPESEN
 3 APR 09 10-3

TEGUCIGALPA, HONDURAS

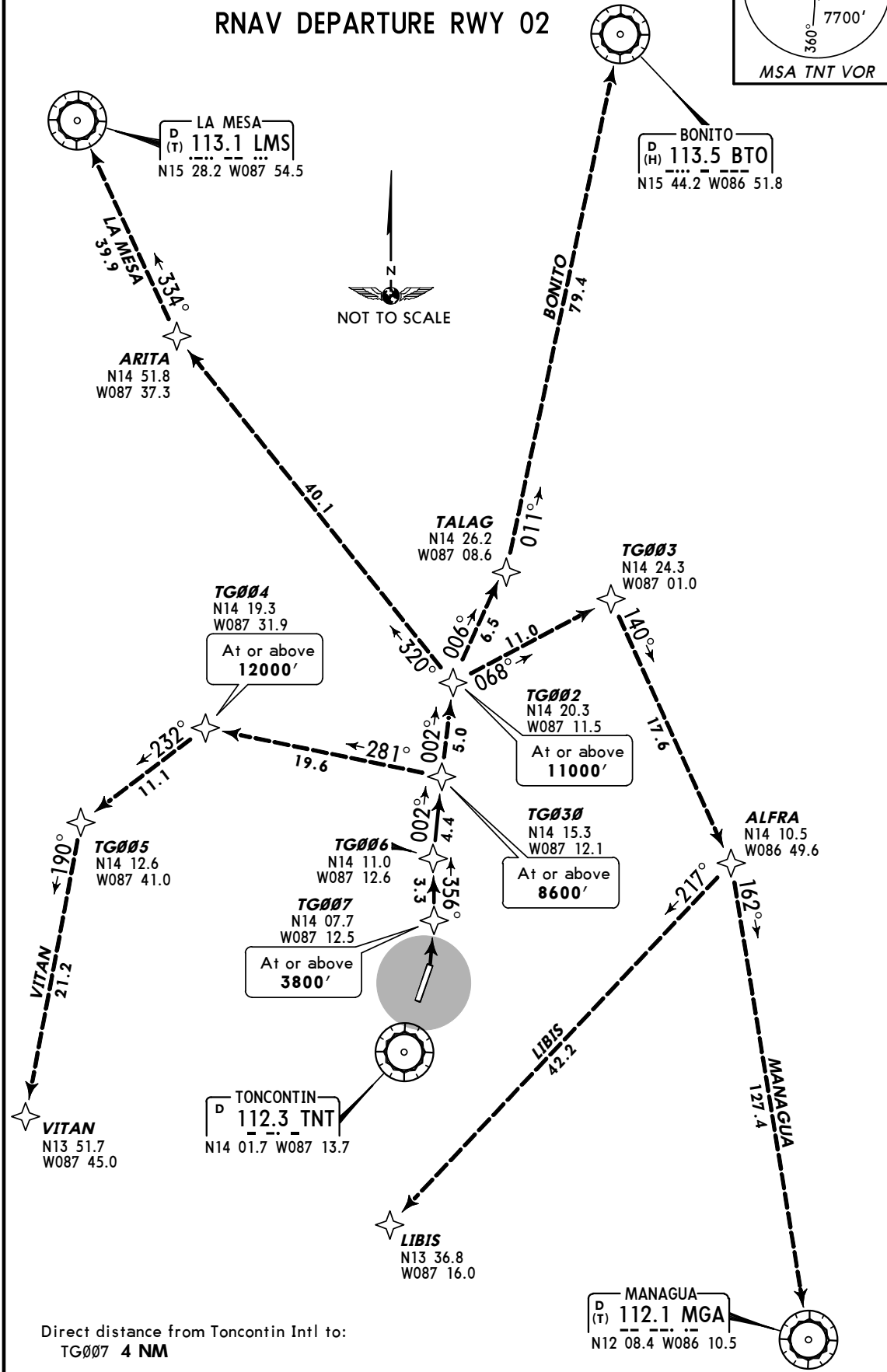
RNAV SID

Apt Elev
 3297'

Trans level: FL200 Trans alt: 19500'
 1. GPS required.
 2. DME/DME not required.
 3. RNP 2.0.



RNAV DEPARTURE RWY 02



MHTG/TGU

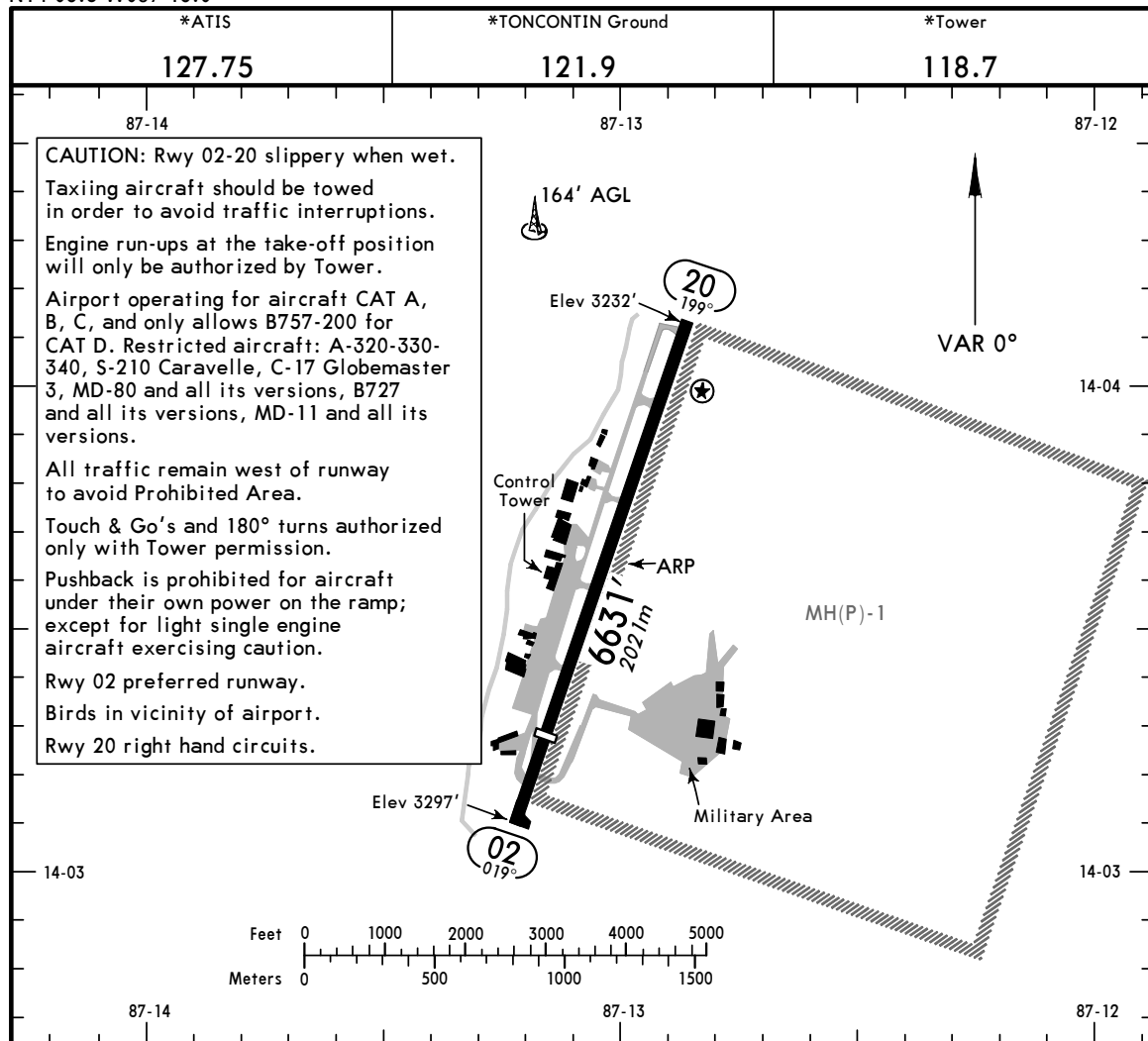
Apt Elev **3297'**
 N14 03.6 W087 13.0



JEPPESEN TEGUCIGALPA, HONDURAS

17 FEB 12 (10-9)

TONCONTIN INTL



ADDITIONAL RUNWAY INFORMATION					
RWY		USABLE LENGTHS		TAKE-OFF	WIDTH
		LANDING BEYOND			
		Threshold	Glide Slope		
02	RL ① REIL ② PAPI-R (angle 5.3°)	5459'	1664m		148'
20	RL ① REIL PAPI-R (angle 5.0°)				45m

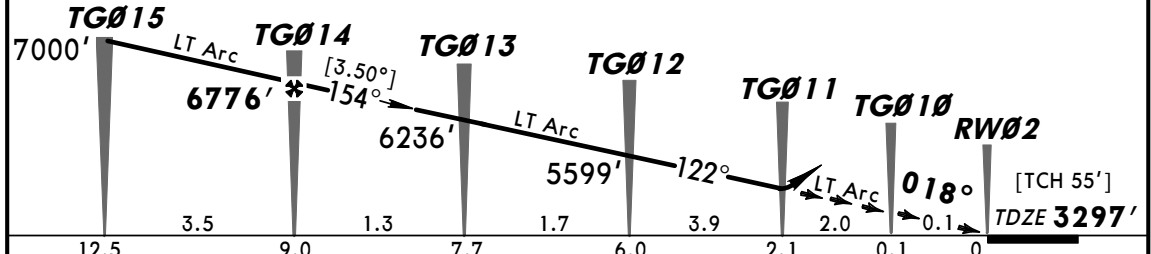
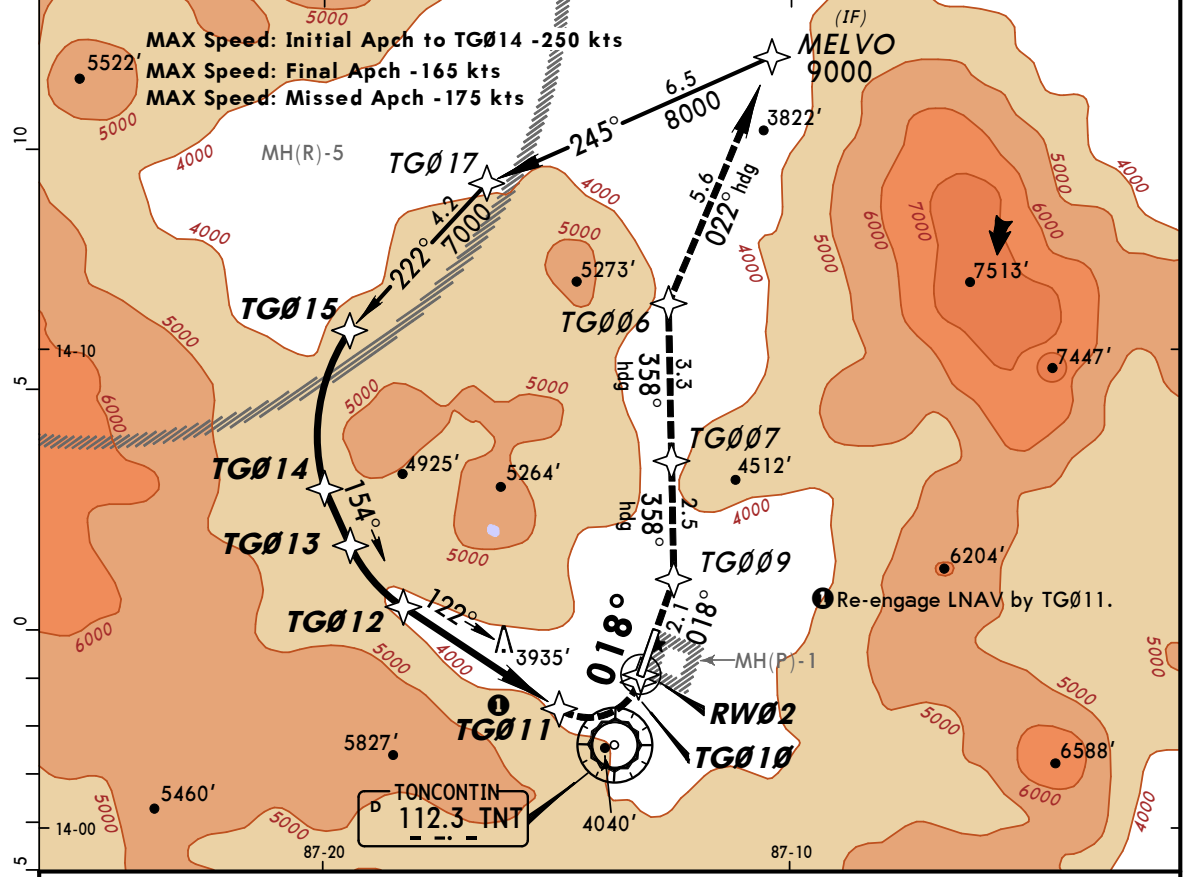
- ① Activate on 118.7
- ② Cat A, B only.

TAKE-OFF	
	All Rwys
1 & 2 Eng	1200' - 2800m
3 & 4 Eng	1200' - 2800m

MHTG/TGU **JEPPESEN** **TEGUCIGALPA, HONDURAS**
TONCONTIN INTL 17 AUG 12 **12-20** **CAT C & D** **NORTH RNAV (RNP) Rwy 02**

*ATIS 127.75	*TONCONTIN Approach 119.1	*TONCONTIN Tower 118.7	*Ground 121.9																					
RNAV	Final Apch Crs 018°	Minimum Alt TGØ14 6776' (3479')	RNP 0.30 DA(H) 4429' (1132')																					
Apt Elev 3297' TDZE 3297'																								
MISSED APCH: Climb and continue on radius leg to TGØ1Ø then Rwy heading to TNT VOR R-018 to TGØØ9 then proceed on heading 358° climbing to TGØØ6 then heading 022° climbing to 9000' to MELVO and request ATC instructions. Missed approach requires RNP less than 1.00.																								
MSA TNT VOR <table border="1"> <tr> <th colspan="7">Missed Approach Climb Gradient</th> </tr> <tr> <th>Gnd speed-Kts</th> <th>75</th> <th>100</th> <th>150</th> <th>200</th> <th>250</th> <th>300</th> </tr> <tr> <td>260'/NM</td> <td>325</td> <td>433</td> <td>650</td> <td>867</td> <td>1083</td> <td>1300</td> </tr> </table>				Missed Approach Climb Gradient							Gnd speed-Kts	75	100	150	200	250	300	260'/NM	325	433	650	867	1083	1300
Missed Approach Climb Gradient																								
Gnd speed-Kts	75	100	150	200	250	300																		
260'/NM	325	433	650	867	1083	1300																		

Alt Set: hPa TDZ Elev: 115 hPa Trans level: FL 200 Trans alt: 19500'
 1. **SPECIAL AIRCRAFT & AIRCREW AUTHORIZATION REQUIRED.** 2. **RF and GPS capability required.**
 3. CAUTION: High terrain all quadrants. Do not exceed distance limits in the holding pattern and procedure turns. 4. Procedure not authorized if temperature is below 14°C (57°F) or above 52°C (126°F).
 5. DME/DME not authorized. 6. VGSI and descent angle not coincident.



Gnd speed-Kts	70	90	100	120	140	160	REIL PAPI-R	↑ and continue on Radius leg TGØ1Ø
Descent angle [3.50°]	434	557	619	743	867	991		
MAP at DA								

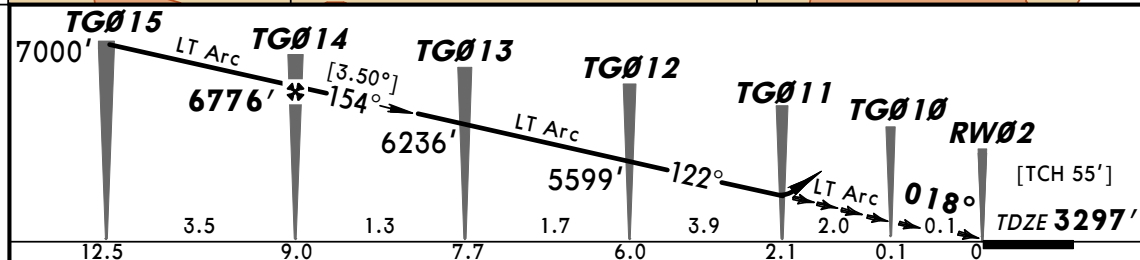
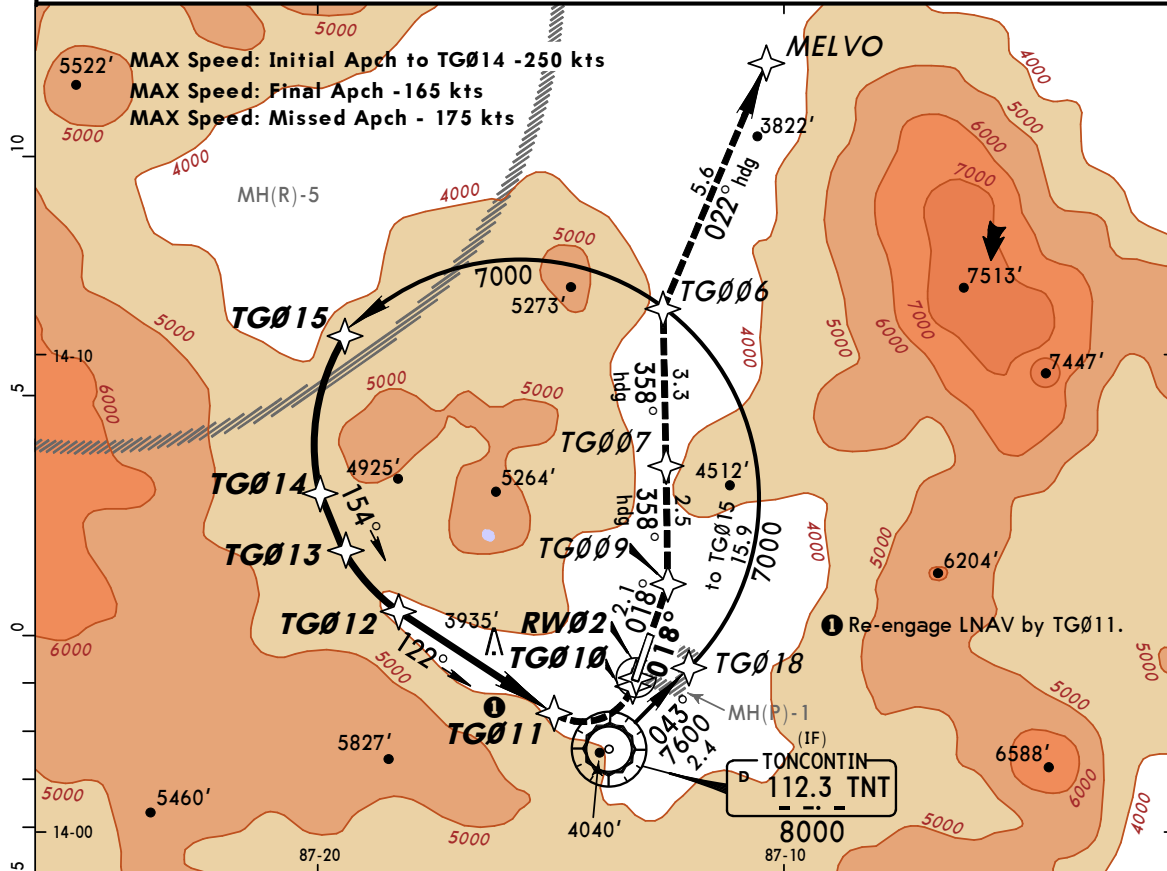
STRAIGHT-IN LANDING RWY 02
 RNP 0.30
 DA(H) **4429' (1132')**

A	NA
B	
C	2.6 km
D	

MHTG/TGU **JEPPESEN** **TEGUCIGALPA, HONDURAS**
TONCONTIN INTL 17 AUG 12 **(12-21)** **CAT C & D** **SOUTH RNAV (RNP) Rwy 02**

*ATIS 127.75	*TONCONTIN Approach 119.1	*TONCONTIN Tower 118.7	*Ground 121.9																					
RNAV	Final Apch Crs 018°	Minimum Alt TG014 6776' (3479')	RNP 0.30 DA(H) 4429' (1132')																					
Apt Elev 3297' TDZE 3297'																								
MISSED APCH: Climb and continue on radius leg to TG010 then Rwy heading to TNT VOR R-018 to TG009 then proceed on heading 358° climbing to TG006 then heading 022° climbing to 9000' to MELVO and request ATC instructions. Missed approach requires RNP less than 1.00.																								
MSA TNT VOR <table border="1"> <tr> <th colspan="7">Missed Approach Climb Gradient</th> </tr> <tr> <th>Gnd speed-Kts</th> <td>75</td> <td>100</td> <td>150</td> <td>200</td> <td>250</td> <td>300</td> </tr> <tr> <th>260'/NM</th> <td>325</td> <td>433</td> <td>650</td> <td>867</td> <td>1083</td> <td>1300</td> </tr> </table>				Missed Approach Climb Gradient							Gnd speed-Kts	75	100	150	200	250	300	260'/NM	325	433	650	867	1083	1300
Missed Approach Climb Gradient																								
Gnd speed-Kts	75	100	150	200	250	300																		
260'/NM	325	433	650	867	1083	1300																		

Alt Set: hPa TDZ Elev: 115 hPa Trans level: FL 200 Trans alt: 19500'
1. SPECIAL AIRCRAFT & AIRCREW AUTHORIZATION REQUIRED. **2. RF and GPS capability required.**
3. CAUTION: High terrain all quadrants. Do not exceed distance limits in the holding patterns and procedure turns. **4.** Procedure not authorized if temperature is below 14°C (57°F) or above 52°C (126°F). **5.** DME/DME not authorized. **6.** VGSI and descent angle not coincident.



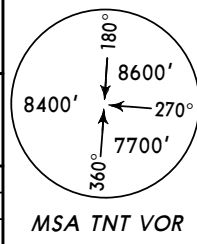
Gnd speed-Kts	70	90	100	120	140	160	REIL PAPI-R	↑ and continue on Radius leg TG010
Descent angle [3.50°]	434	557	619	743	867	991		
MAP at DA								

STRAIGHT-IN LANDING RWY02
RNP 0.30
 DA(H) **4429' (1132')**

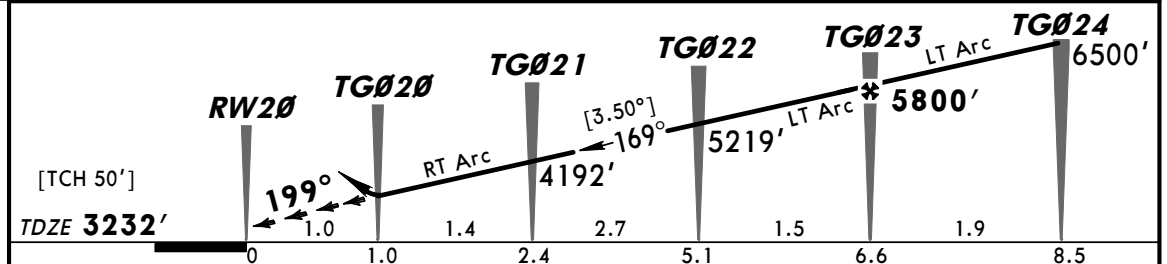
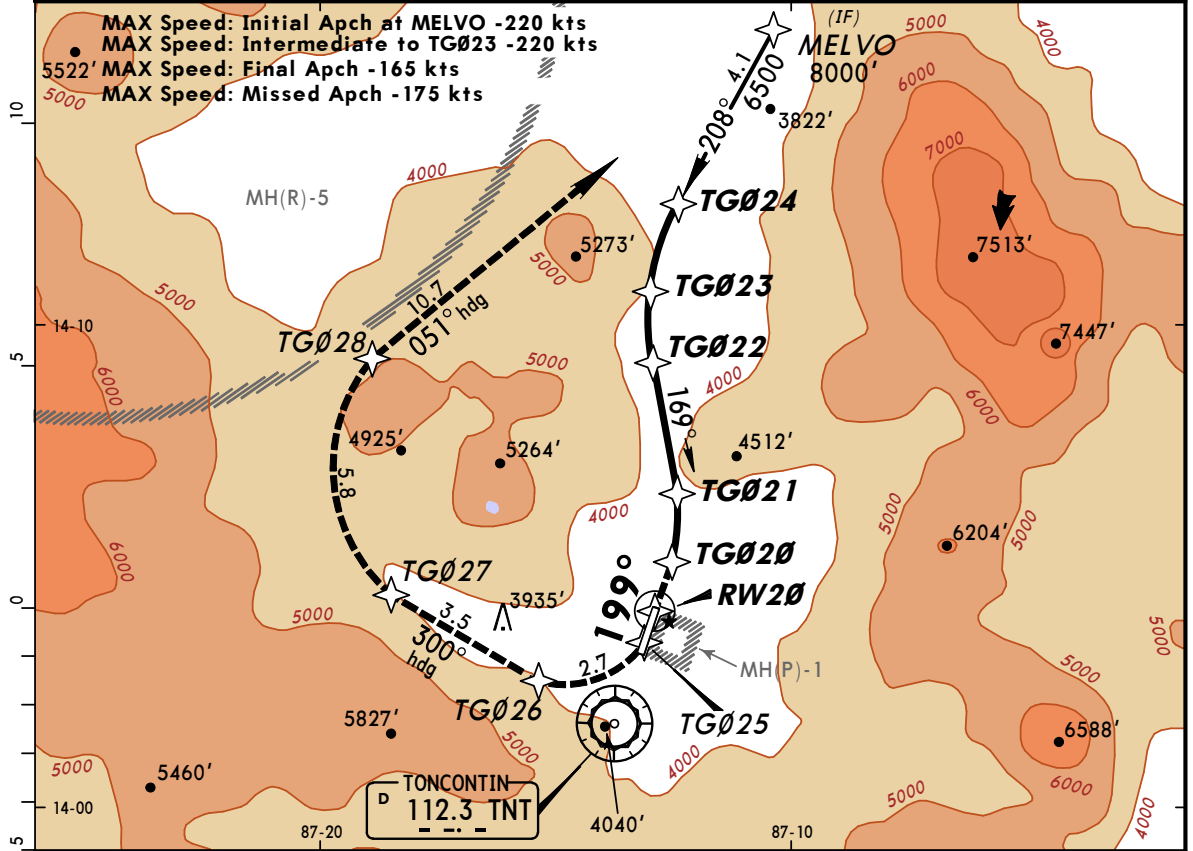
A	NA
B	
C	2.6 km
D	

MHTG/TGU **JEPPESEN** **TEGUCIGALPA, HONDURAS**
TONCONTIN INTL 17 AUG 12 (12-22) **CAT C & D** **RNAV (RNP) Rwy 20**

*ATIS 127.75	*TONCONTIN Approach 119.1		*TONCONTIN Tower 118.7		*Ground 121.9		
RNAV	Final Apch Crs 199°	Minimum Alt TG023 5800' (2568')	RNP 0.30 DA(H) 3932' (700')	Apt Elev 3297'	TDZE 3232'		
BRIEFING STRIP™	MISSED APCH: Climb on Rwy heading to TG025 then climbing RIGHT turn on radius leg to TG026 then proceed on heading 300° climbing to TG027, TG028 then heading 051° climbing to 8000' to MELVO and request ATC instructions. Missed approach requires RNP less than 1.00.						
	Missed Approach Climb Gradient						
	Gnd speed-Kts	75	100	150	200	250	300
	260'/NM	325	433	650	867	1083	1300



Alt Set: hPa TDZ Elev: 113 hPa Trans level: FL 200 Trans alt: 19500'
 1. **SPECIAL AIRCRAFT & AIRCREW AUTHORIZATION REQUIRED.** 2. **RF and GPS capability required.**
 3. **CAUTION:** High terrain all quadrants. Do not exceed distance limits in the holding patterns and procedure turns. 4. Procedure not authorized if temperature is below 14°C (57°F) or above 52°C (126°F).
 5. DME/DME not authorized. 6. VGSI and descent angle not coincident.



Gnd speed-Kts	70	90	100	120	140	160				
Descent angle [3.50°]	434	557	619	743	867	991				
MAP at DA										
							REIL PAPI-R	8000'	Rwy hdg	TG025

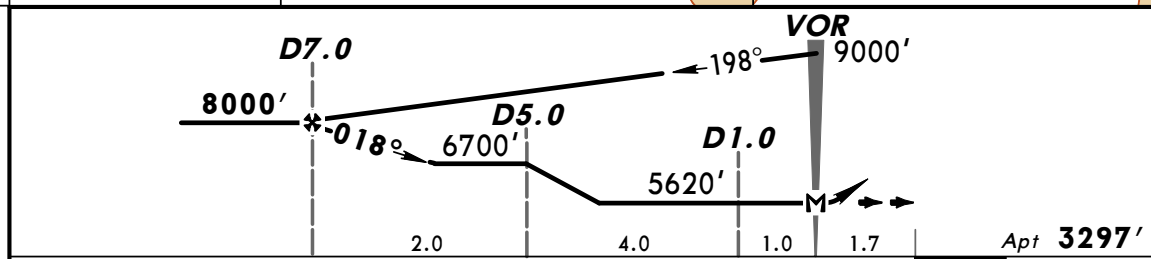
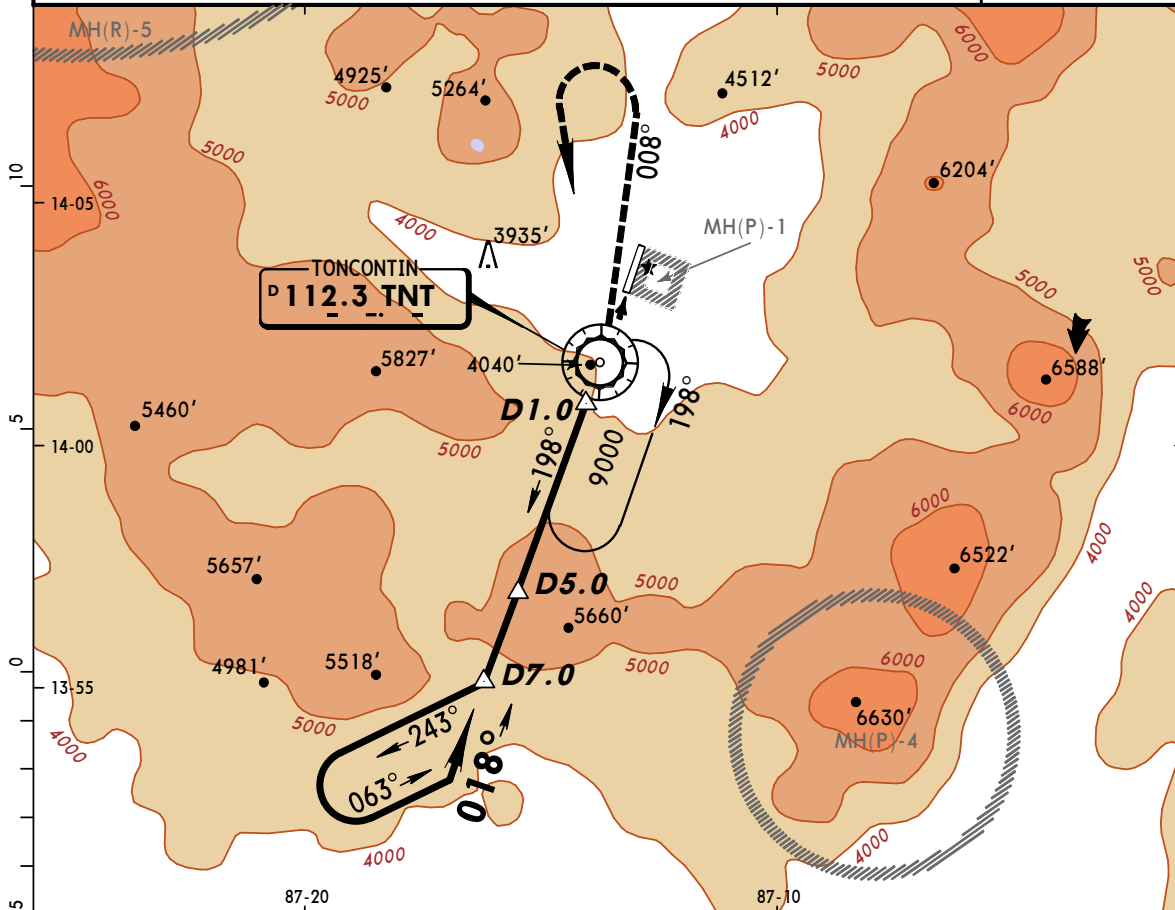
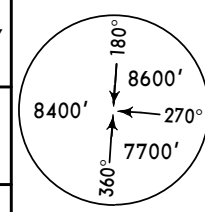
STRAIGHT-IN LANDING RWY 20										
RNP 0.30										
DA(H) 3932' (700')										
PANS OPS	NA									
2.6 km										

MHTG/TGU
TONCONTIN INTL

JEPPESEN
 3 FEB 12 (13-1)

TEGUCIGALPA, HONDURAS
VOR DME Rwy 02

BRIEFING STRIP™	*ATIS 127.75	*TONCONTIN Approach 119.1	*TONCONTIN Tower 118.7	*Ground 121.9
	VOR TNT 112.3	Final Apch Crs 018°	Minimum Alt D7.0 8000' (4703')	MDA(H) Refer to Minimums Apt Elev 3297'
	MISSED APCH: Climb outbound on TNT VOR R-008 to 6500' within 6.5 NM, then turn LEFT climbing to a minimum of 9000'. Then return to TNT VOR. Request instructions from ATC.			
Alt Set: hPa Apt Elev: 115 hPa Trans level: FL 200 Trans alt: 19500' 1. CAUTION: High terrain all quadrants. Do not exceed distance limits in the holding patterns and procedure turns.				



Gnd speed-Kts	70	90	100	120	140	160	REIL PAPI-R 6500' ↑ TNT on 112.3 within 6.5 NM R-008
Rate of descent on final (feet/min)	397	510	567	680	793	907	
MAP at VOR							
D7.0 to MAP	7.0	6:00	4:40	4:12	3:30	2:38	

STRAIGHT-IN LANDING		CIRCLE-TO-LAND	
NA		Not Authorized East of Rwy	
		MDA(H)	
A		100	5620' (2323') - 3.7 km
B		135	
C		180	5620' (2323') - 5.6 km
D		205	

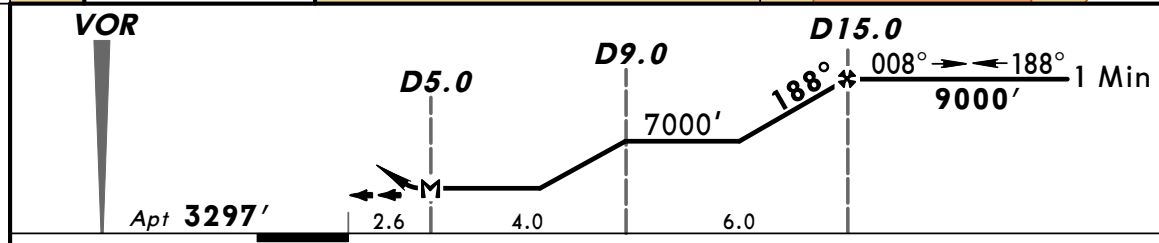
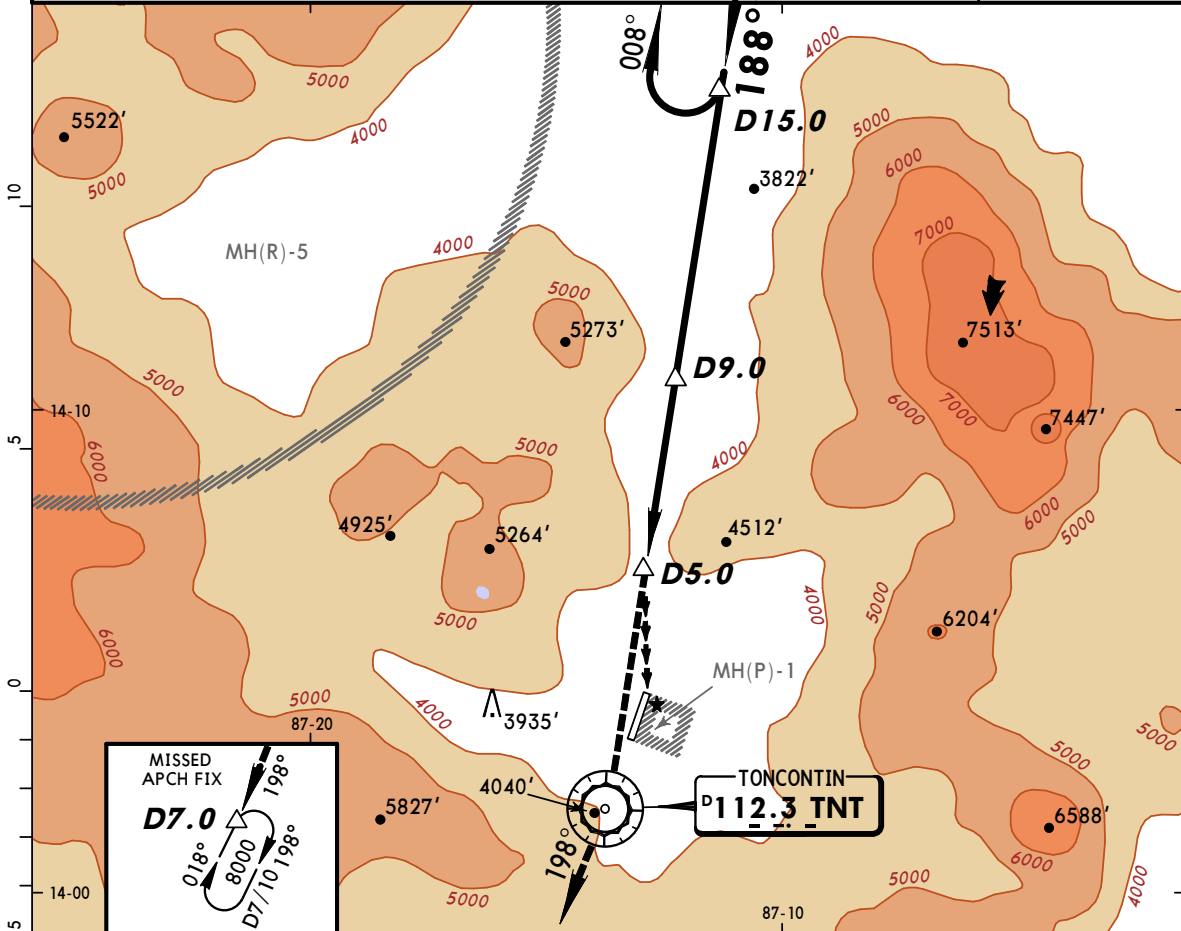
PANS OPS

MHTG/TGU
TONCONTIN INTL

JEPPESEN
 3 FEB 12 (13-2)

TEGUCIGALPA, HONDURAS
VOR DME Rwy 20

BRIEFING STRIP™	*ATIS 127.75		*TONCONTIN Approach 119.1		*TONCONTIN Tower 118.7		*Ground 121.9	
	VOR TNT 112.3	Final Apch Crs 188°	Minimum Alt D15.0 9000' (5703')		MDA(H) Refer to Minimums	Apt Elev 3297'		
	<p>MISSED APCH: Climb direct TNT VOR, then continue climb outbound on TNT VOR R-198 to 8000', enter holding pattern. Call APPROACH for instructions.</p> <p>Alt Set: hPa Apt Elev: 115 hPa Trans level: FL 200 Trans alt: 19500'</p> <p>1. CAUTION: High terrain all quadrants. Do not exceed distance limits in the holding patterns and procedure turns.</p>							<p>MSATNT VOR</p>



MAP at D5.0				REIL PAPI-R	↑	→	TNT 112.3
-------------	--	--	--	----------------	---	---	---------------------

PANS OPS	CIRCLE-TO-LAND	
	Not Authorized East of Rwy	
	Max Kts	MDA(H)
	A 100	6000' (2703') -3.7 km
B 135		
C 180		
D 205	6000' (2703') -5.6 km	