

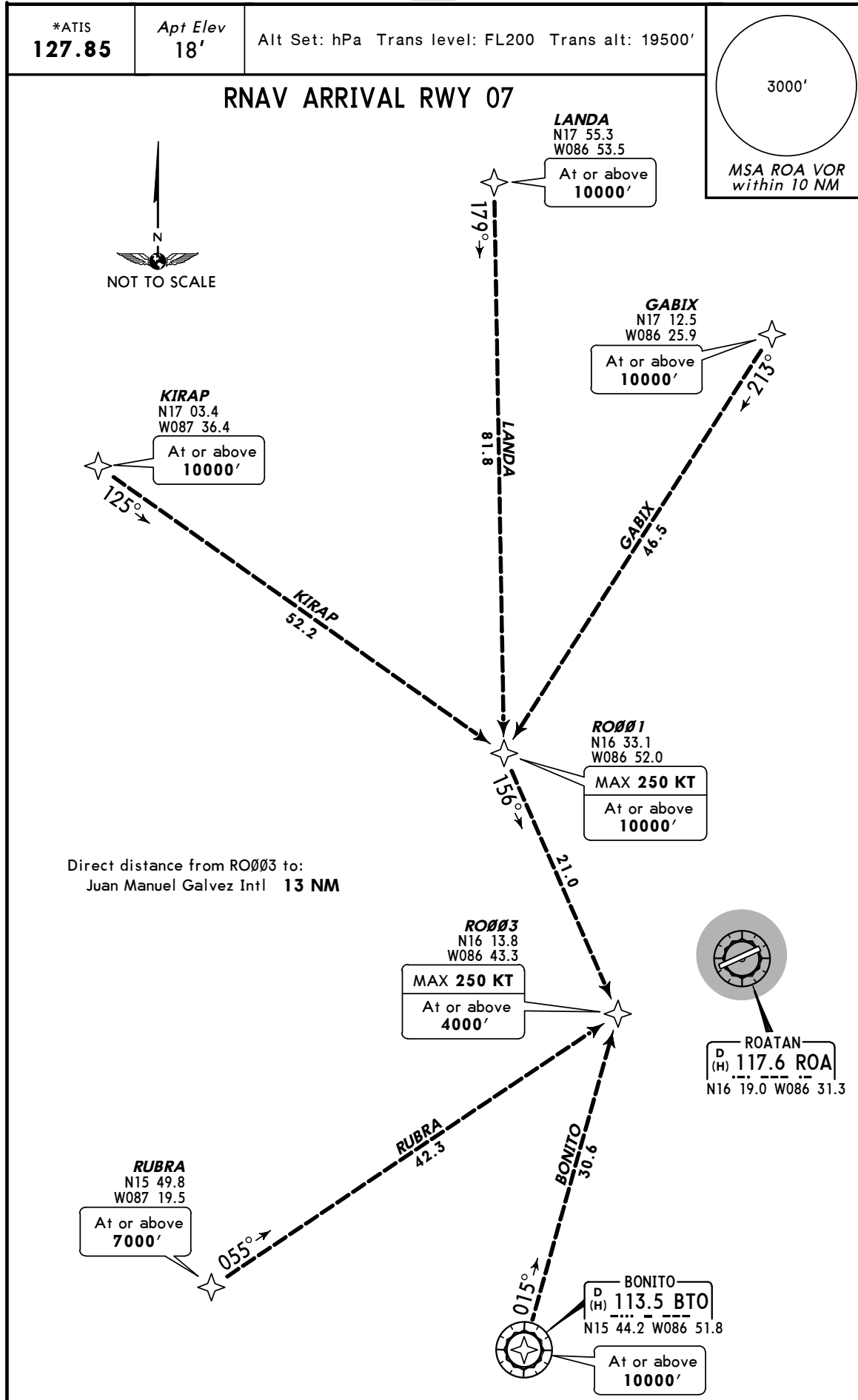
MHRO/RTB
JUAN MANUEL
GALVEZ INTL

JEPPESEN

25 NOV 11 **10-2**

ROATAN, HONDURAS

RNAV STAR

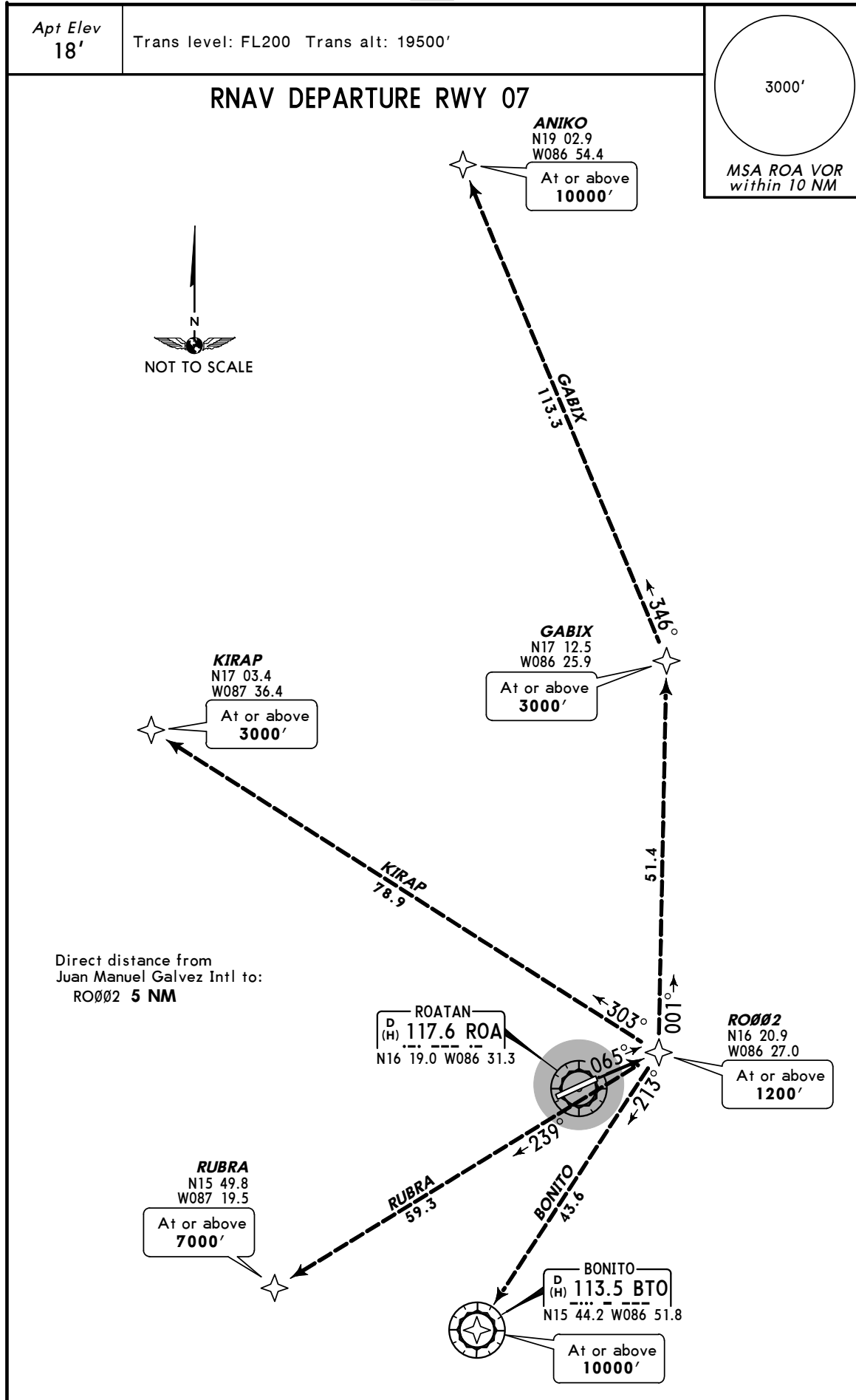


CHANGES: ATIS frequency added.

MHRO/RTB
JUAN MANUEL
GALVEZ INTL

JEPPESEN
25 NOV 11 10-3

ROATAN, HONDURAS
RNAV SID



CHANGES: GABIX coordinates.

© JEPPESEN, 2008, 2011. ALL RIGHTS RESERVED.

MHRO/RTB

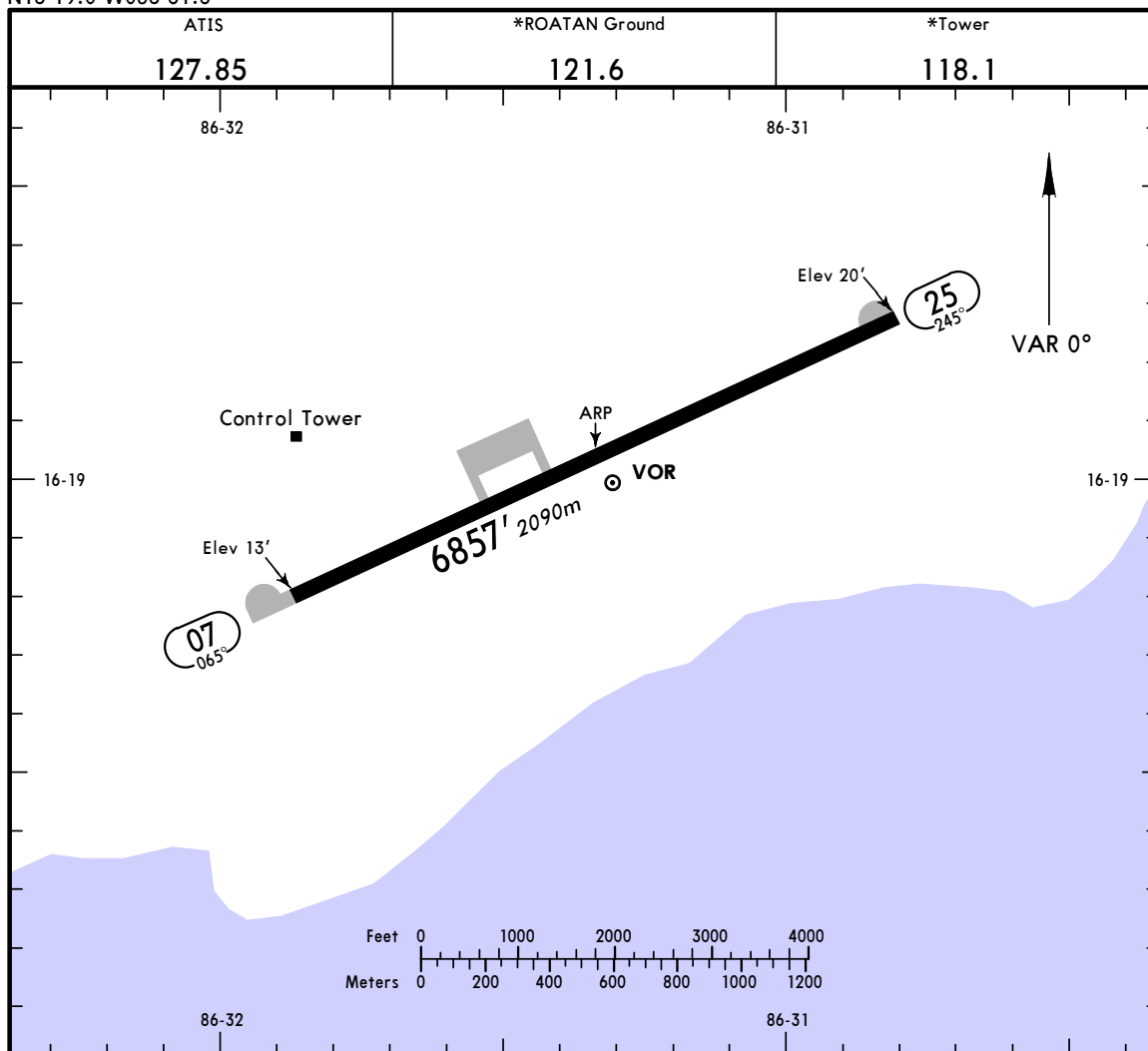
Apt Elev **20'**
 N16 19.0 W086 31.3



6 JAN 12 (10-9)

ROATAN, HONDURAS

JUAN MANUEL GALVEZ INTL



ADDITIONAL RUNWAY INFORMATION

RWY		USABLE LENGTHS		TAKE-OFF	WIDTH
		LANDING BEYOND Threshold	Glide Slope		
07	RL REIL PAPI-L (angle 3.0°)	grooved			148'
25	RL REIL PAPI-L (angle 3.5°)	grooved			45m

TAKE-OFF

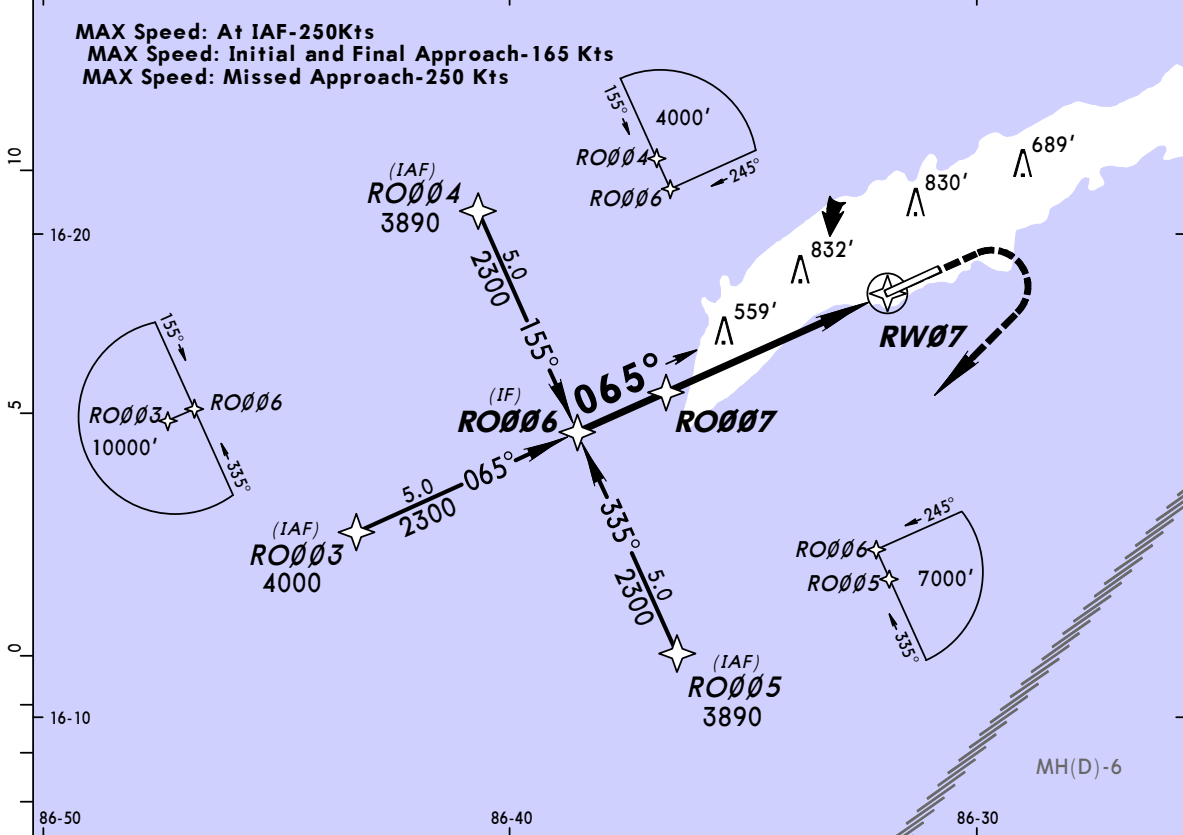
	AIR CARRIER All Rwys		AIR CARRIER (FAR 121)	
	LVP must be in Force RCLM (DAY only) or RL	RCLM (DAY only) or RL	All Rwys Adequate Vis Ref	
A	250m	400m	2 Eng	400m
B			3 & 4 Eng	
C	300m	400m		400m
D				

MHRO/RTB
JUAN MANUEL GALVEZ INTL 25 NOV 11 **(12-1)**

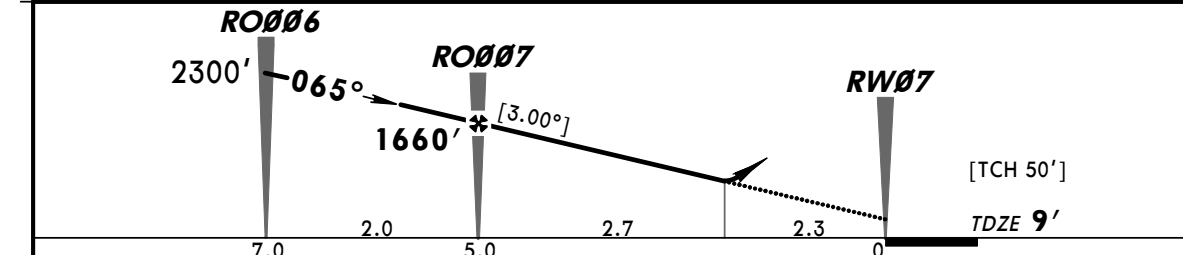
ROATAN, HONDURAS
RNAV (GPS) Rwy 07

ATIS 127.85		*ROATAN Tower 118.1		*Ground 121.6	
RNAV	Final Apch Crs 065°	Minimum Alt RO007 1660' (1651')	LNAV/VNAV DA(H) 810' (801')	Apt Elev 18'	TAA 30 NM IAF
MISSED APCH: Climb to 1200' then turn RIGHT direct to RO005 at 4000'. Request instructions from ATC.					
Alt Set: hPa		TDZ Elev: 0 hPa		Trans Level: FL 200	

1. GPS required. 2. DME/DME not authorized.



DIST to THR	12.0	7.0	5.0	3.9	2.3
ALTITUDE	3884'	2292'	1655'	1318'	810'



Gnd speed-Kts	70	90	100	120	140	160	REIL	1200'	4000'	D → RO005
Descent angle [3.00°]	372	478	531	637	743	849	PAPI-L	↑	→ RT	
MAP at DA										

STRAIGHT-IN LANDING RWY07		CEILING REQUIRED		CIRCLE-TO-LAND	
LNAV/VNAV					
DA(H) 810' (801')					
CEILING-VISIBILITY			Max Kts	MDA(H)	CEIL-VIS
A	800' - 1600m		100	810' (792')	800' - 1600m
B	800' - 2000m		135	810' (792')	800' - 2000m
C	800' - 3600m		180	810' (792')	800' - 3600m
D	800' - 4000m		205	810' (792')	800' - 4000m

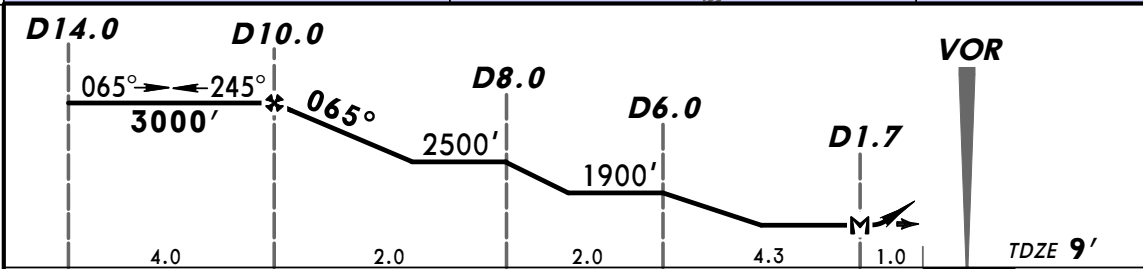
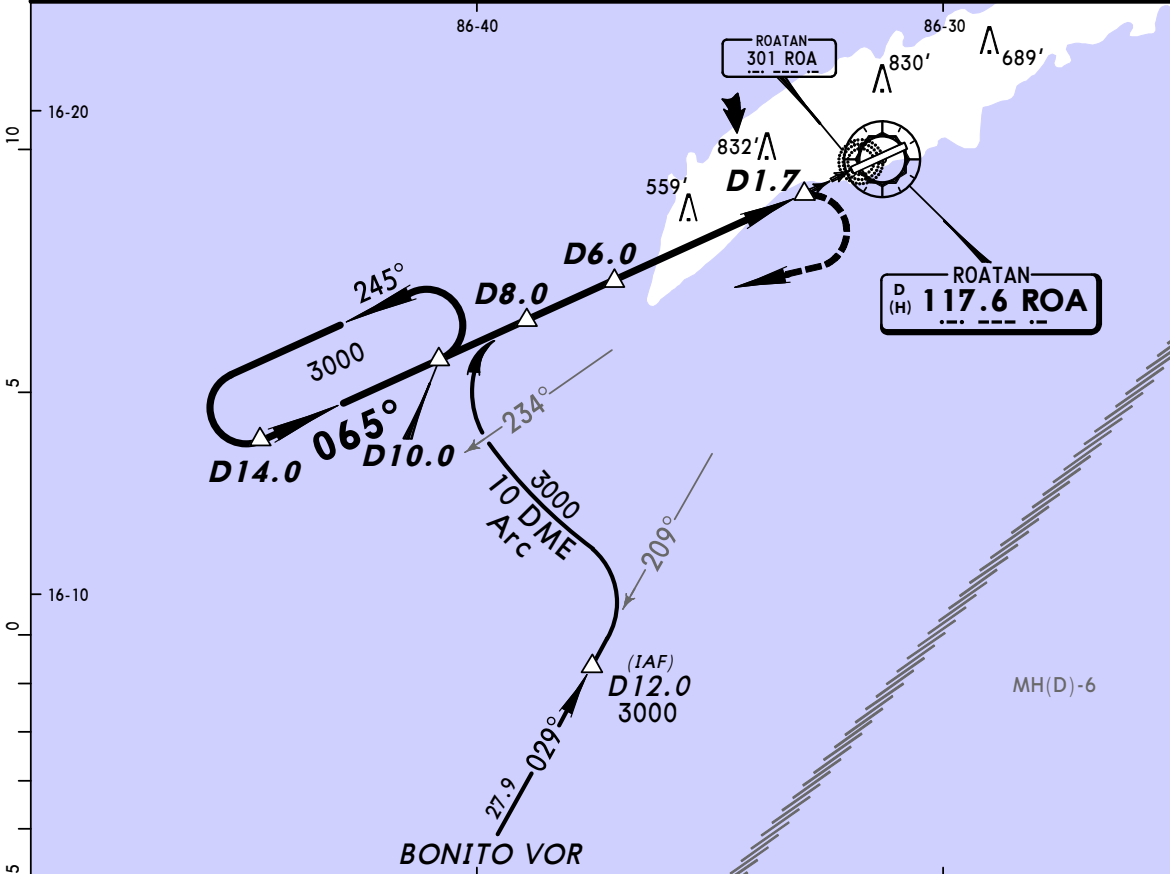
CHANGES: ATIS frequency added.

MHRO/RTB
JUAN MANUEL GALVEZ INTL

JEPPESEN
 3 FEB 12 (13-1)

ROATAN, HONDURAS
VOR DME 1 Rwy 07

ATIS 127.85		*ROATAN Tower 118.1		*Ground 121.6	
VOR ROA 117.6	Final Apch Crs 065°	Minimum Alt D10.0 3000' (2991')	MDA(H) 500' (491')	Apt Elev 20' TDZE 9'	3000' MSA ROA VOR within 10 NM
MISSED APCH: Climbing RIGHT turn to 3000' then return to the holding pattern and request instructions from ATC.					
Alt Set: hPa		TDZ Elev: 0 hPa	Trans level: FL 200	Trans alt: 19500'	



Gnd speed-Kts	70	90	100	120	140	160	REIL PAPI-L	3000' RT	D10.0 HOLDING PATTERN
Rate of descent on final (feet/min)	351	452	502	602	703	803			
MAP at D1.7 or FAF to MAP	8.3	7:07	5:32	4:59	4:09	3:33			

STRAIGHT-IN LANDING RWY 07		CEILING REQUIRED	CIRCLE-TO-LAND
MDA(H) 500' (491')			

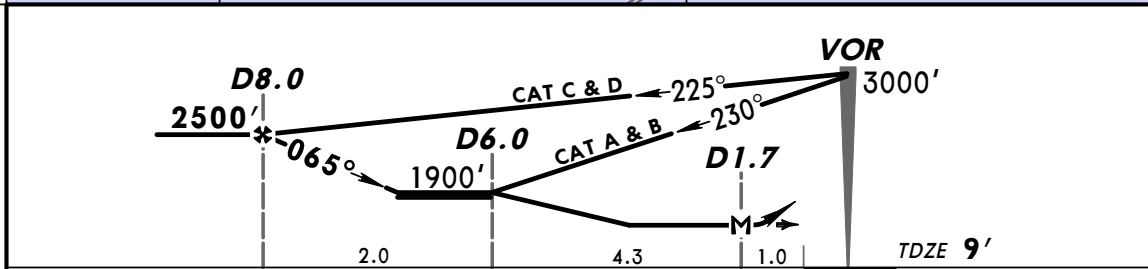
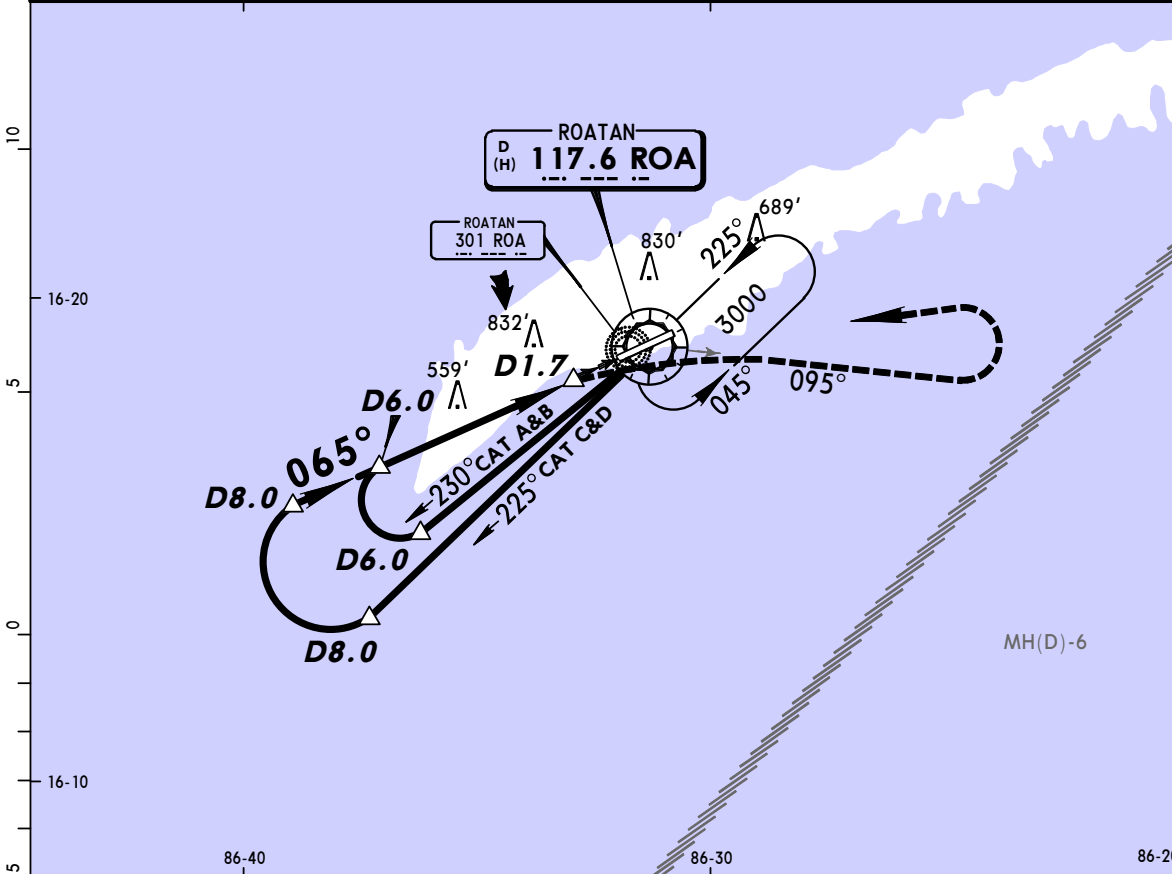
A	500' - 1.9 Km	A	NOT APPLICABLE
B		B	
C	500' - 3.2 Km	C	
D	500' - 3.7 Km	D	

MHRO/RTB
 JUAN MANUEL GALVEZ INTL

JEPPESEN
 3 FEB 12 (13-2)

ROATAN, HONDURAS
 VOR DME 2 Rwy 07

ATIS 127.85		*ROATAN Tower 118.1			*Ground 121.6
VOR ROA 117.6	Final Apch Crs 065°	Minimum Alt D8.0 (CONDITIONAL) 2500' (2491')	MDA(H) 500' (491')	Apt Elev 20' TDZE 9'	3000' MSA ROA VOR within 10 NM
MISSED APCH: Turn RIGHT and climb outbound on ROA VOR R-095 to 3000' then turn LEFT within 10 NM to ROA VOR and hold.					
Alt Set: hPa	TDZ Elev: 0 hPa	Trans level: FL 200	Trans alt: 19500'		



Gnd speed-Kts	70	90	100	120	140	160	REIL PAPI-L 3000' on 117.6 RT on R-095
Rate of descent on final (feet/min)	370	476	529	635	740	846	
MAP at D1.7 or FAF to MAP	6.3	5:24	4:12	3:47	3:09	2:42	

STRAIGHT-IN LANDING RWY 07		CEILING REQUIRED	CIRCLE-TO-LAND
MDA(H) 500' (491')			

A	500' - 1.9 Km	A	NOT APPLICABLE
B		B	
C	500' - 3.2 Km	C	
D	500' - 3.7 Km	D	