

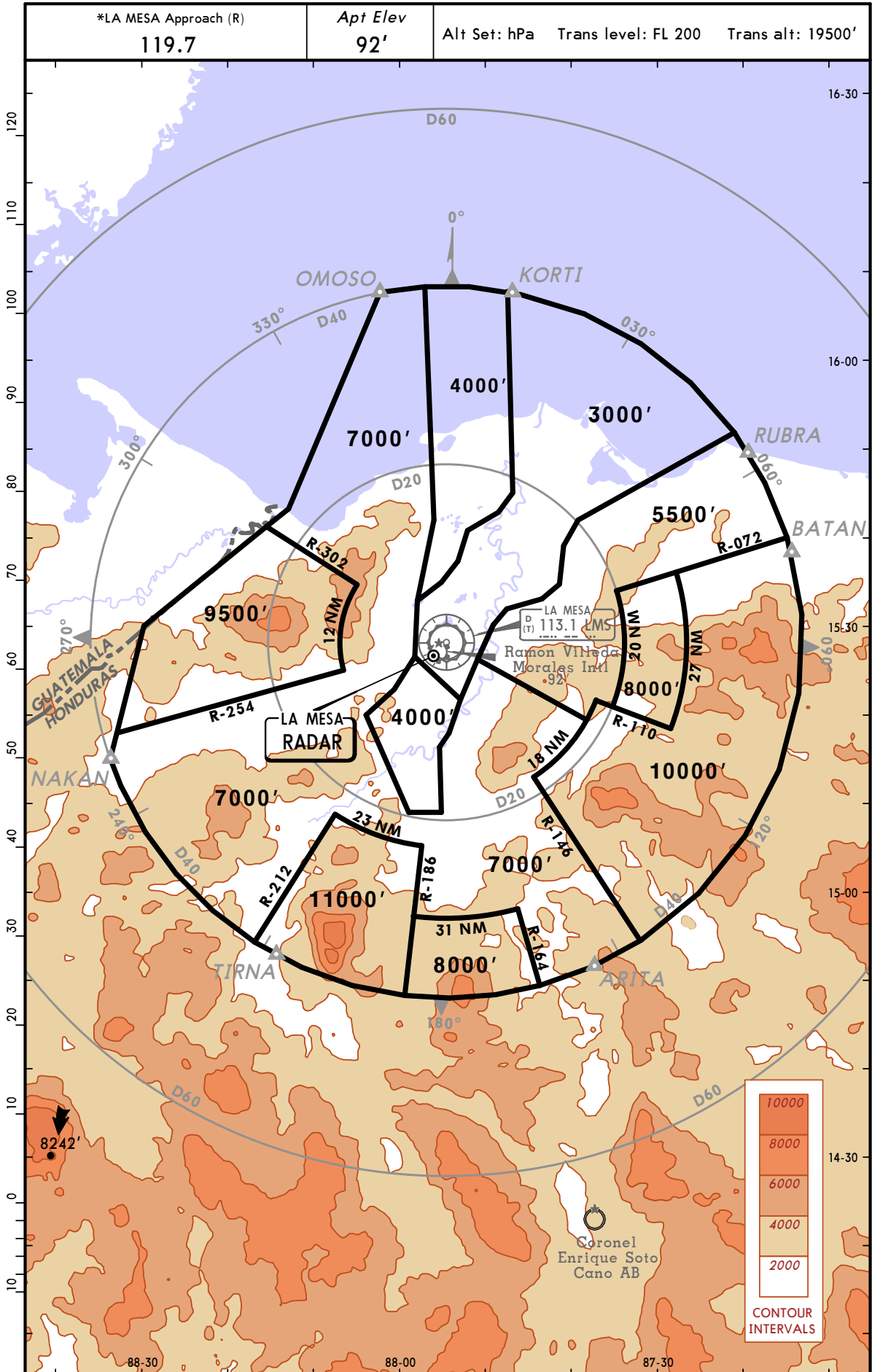
MHLM/SAP
 RAMON VILLEDA
 MORALES INTL

22 JUN 12

10-1R

JEPPESEN SAN PEDRO SULA, HONDURAS

RADAR MINIMUM ALTITUDES

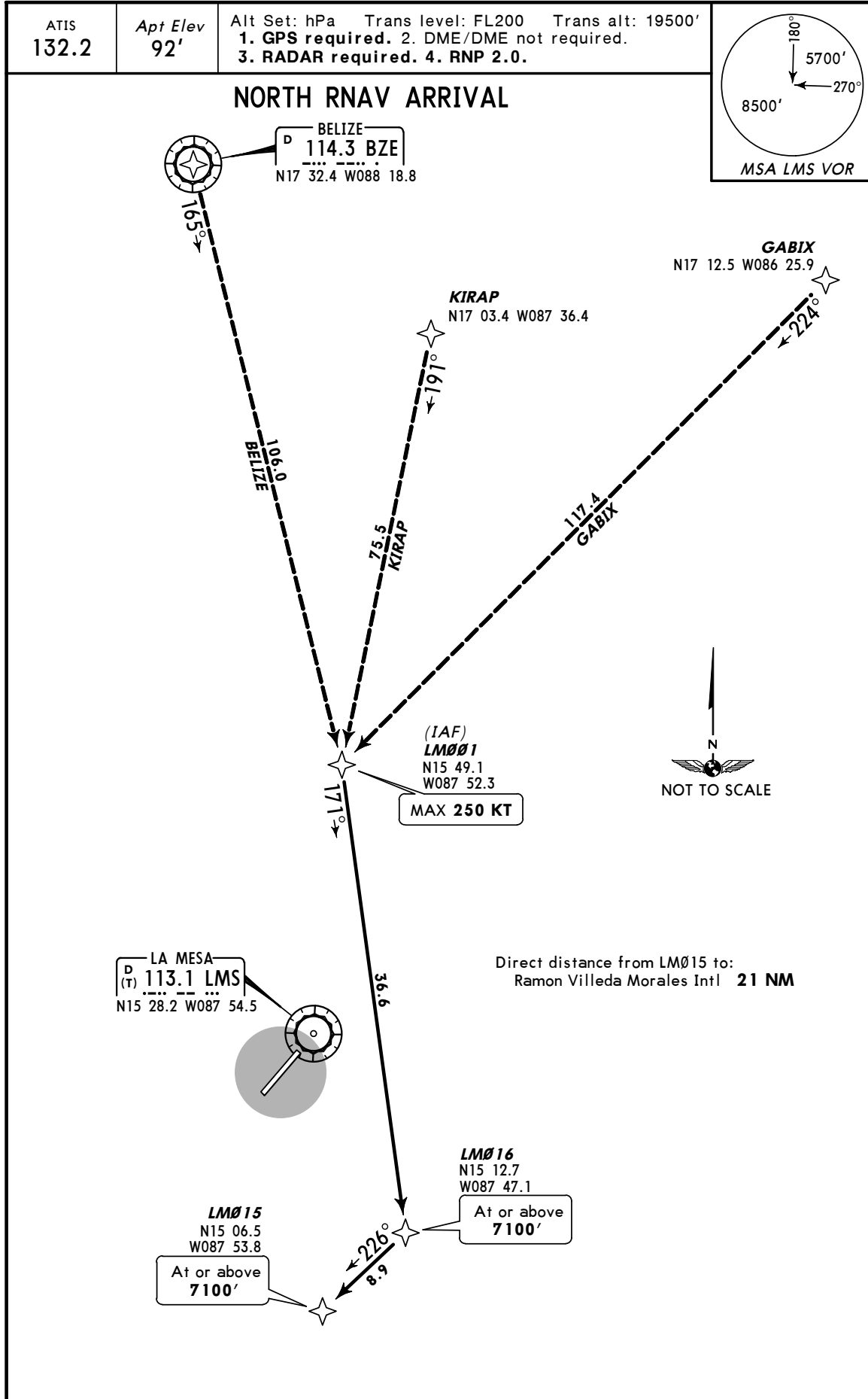


© JEPPESEN, 2005, 2012. ALL RIGHTS RESERVED.

MHLM/SAP
 RAMON VILLEDA
 MORALES INTL

JEPPESEN
 25 NOV 11 (10-2)

SAN PEDRO SULA,
 HONDURAS
RNAV STAR



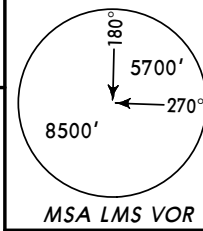
CHANGES: Airport elevation, ATIS frequency added.

MHLM/SAP
 RAMON VILLEDA
 MORALES INTL

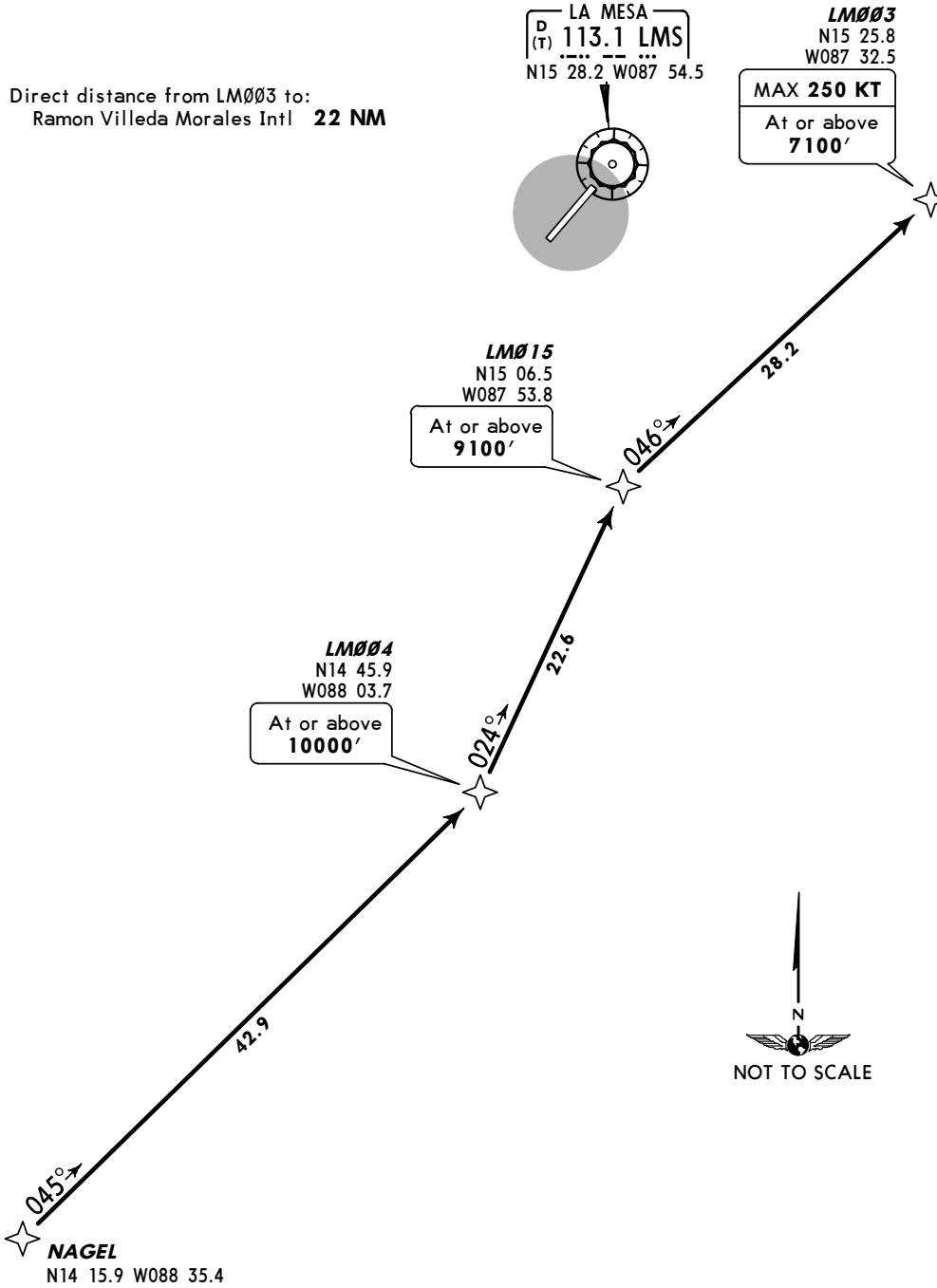
JEPPESEN
 25 NOV 11 (10-2A)

SAN PEDRO SULA,
 HONDURAS
RNAV STAR

ATIS 132.2	Apt Elev 92'	Alt Set: hPa Trans level: FL200 Trans alt: 19500' 1. GPS required. 2. DME/DME not required. 3. RADAR required. 4. RNP 2.0.
---------------	-----------------	---



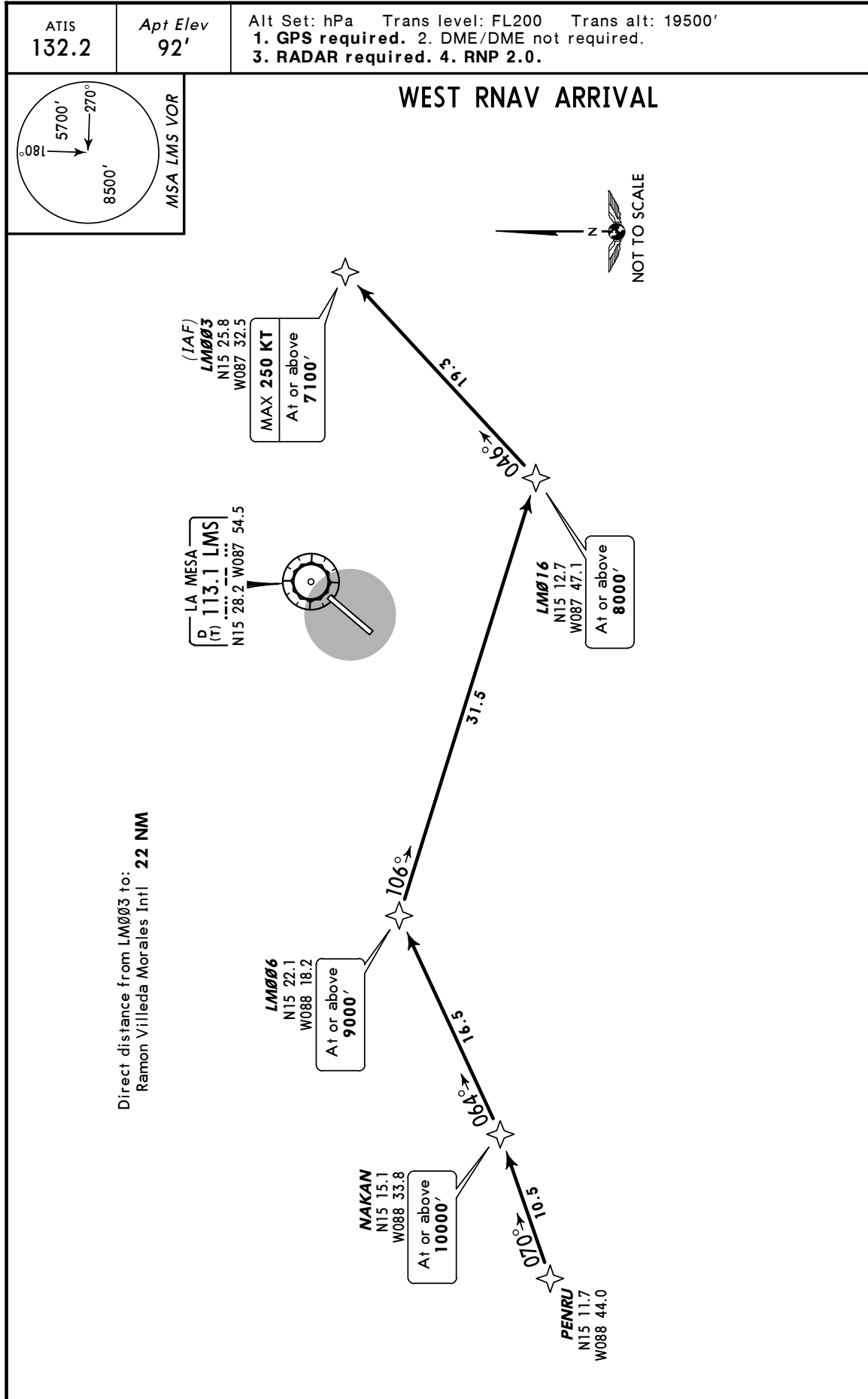
SOUTH RNAV ARRIVAL



MHLM/SAP
 RAMON VILLEDA
 MORALES INTL

JEPPESEN
 25 NOV 11 (10-2B)

SAN PEDRO SULA,
 HONDURAS
RNAV STAR



CHANGES: Airport elevation, ATIS frequency added.

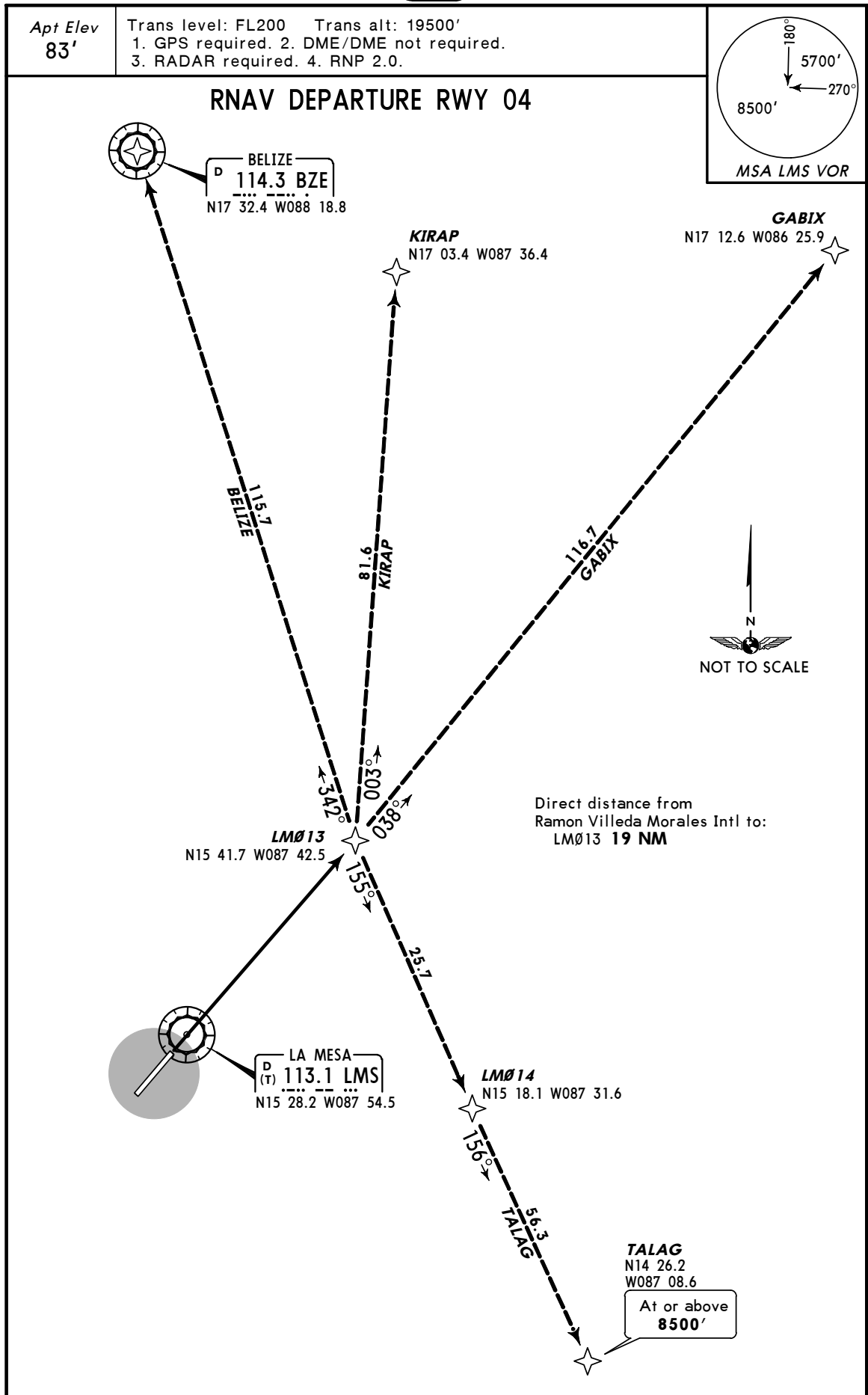
MHLM/SAP
 RAMON VILLEDA
 MORALES INTL



3 APR 09 10-3

SAN PEDRO SULA,
 HONDURAS

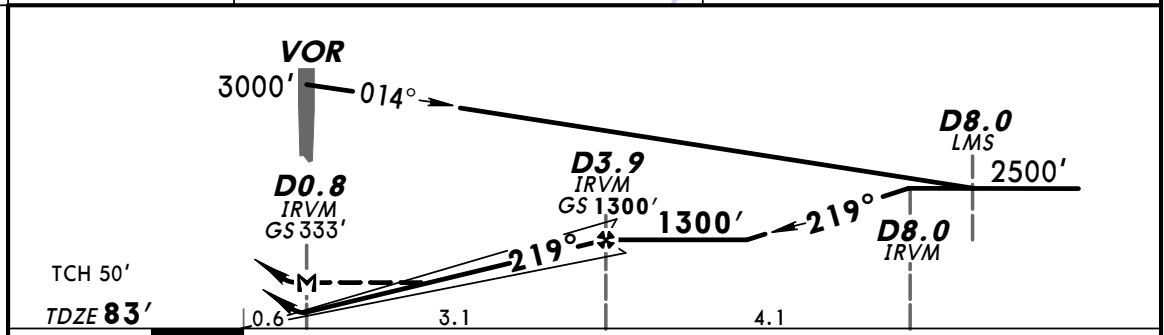
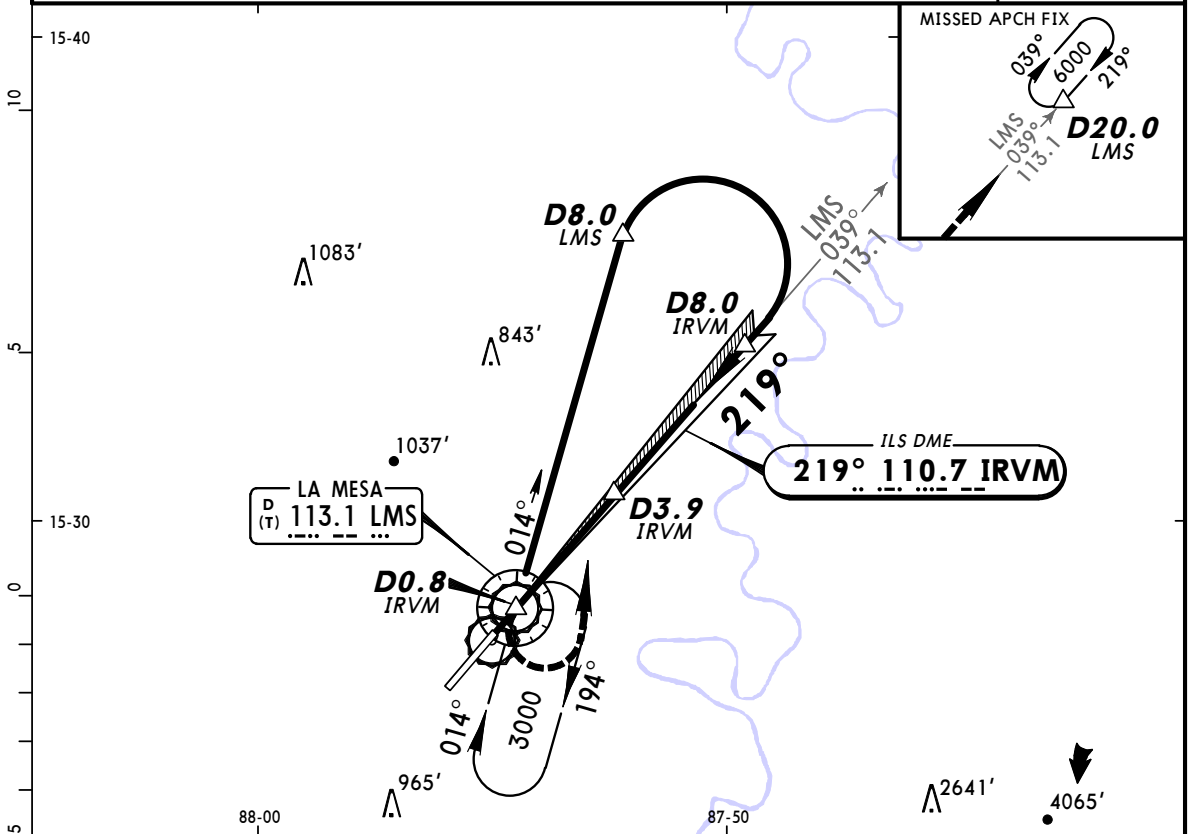
RNAV SID



CHANGES: LM013 to BZE bearing.

MHLM/SAP **JEPPESEN SAN PEDRO SULA, HONDURAS**
RAMON VILLEDA MORALES INTL (11-1) 15 FEB 13 **ILS DME VOR Rwy 22**

*LA MESA Approach (R) 119.7		*LA MESA Tower 118.2		*Ground 121.9	
LOC IRVM 110.7	Final Apch Crs 219°	GS D3.9 IRVM 1300' (1217')	ILS DA(H) 333' (250')	Apt Elev 92' TDZE 83'	
MISSED APCH: Climbing LEFT turn to 6000' outbound via LMS VOR R-039 to D20.0 LMS and expect instructions from ATC.					
Alt Set: hPa		TDZ Elev: 3 hPa	Trans level: FL 200	Trans alt: 19500'	
					MSA LMS VOR



Gnd speed-Kts	70	90	100	120	140	160	ALSF-I REIL PAPI	6000' LT	LMS via 113.1 R-039	D20.0 LMS	
GS	3.00°	372	478	531	637	743					849
MAP at D0.8 IRVM or FAF to MAP 3.1		2:39	2:04	1:52	1:33	1:20					1:10

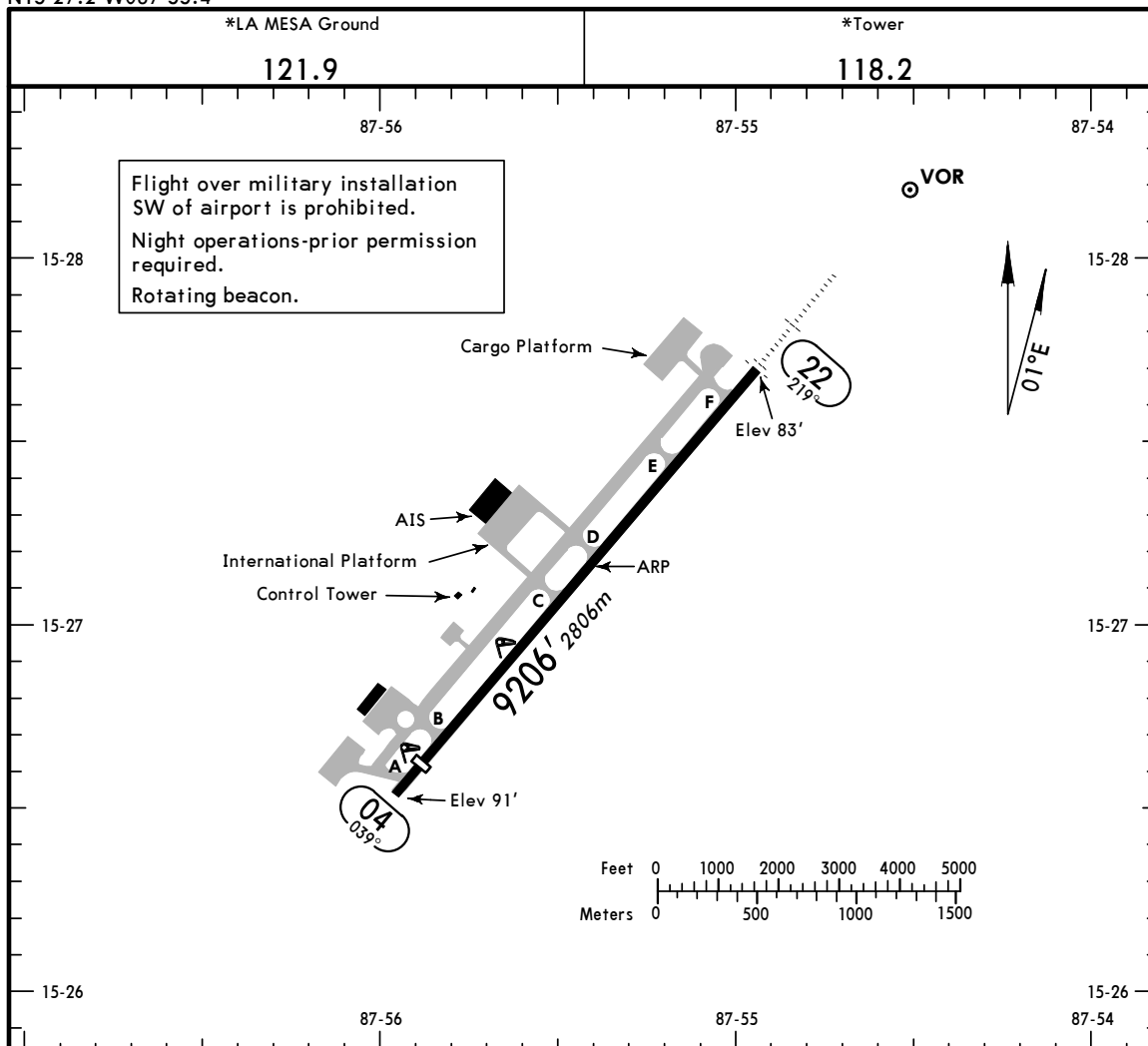
STRAIGHT-IN LANDING RWY22		CEILING REQUIRED		CIRCLE-TO-LAND (TERPS)	
ILS DA(H) 333' (250')		LOC (GS out) MDA(H) 500' (417')		Not Authorized at Night To Rwy 04	
ALS out CEILING-VISIBILITY		ALS out		Max Kts	MDA(H) CEIL-VIS
A	250'- $\frac{3}{4}$	500'-1		90	550'(458') 500'-1
B				120	550'(458') 500'-1
C				140	550'(458') 500'-1½
D				165	650'(558') 500'-2¼

PANS OPS

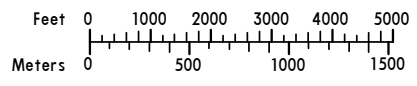
MHLM/SAP

Apt Elev **92'**
 N15 27.2 W087 55.4

JEPPESEN SAN PEDRO SULA, HONDURAS
 15 FEB 13 **(11-1)** **RAMON VILLEDA MORALES INTL**



Flight over military installation SW of airport is prohibited.
 Night operations-prior permission required.
 Rotating beacon.



ADDITIONAL RUNWAY INFORMATION

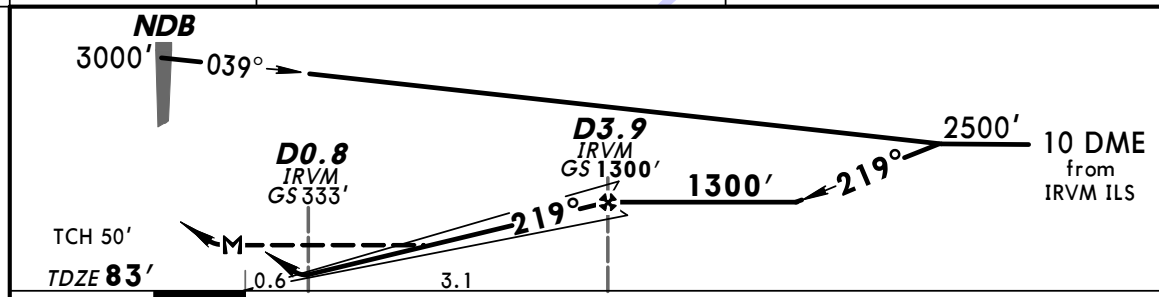
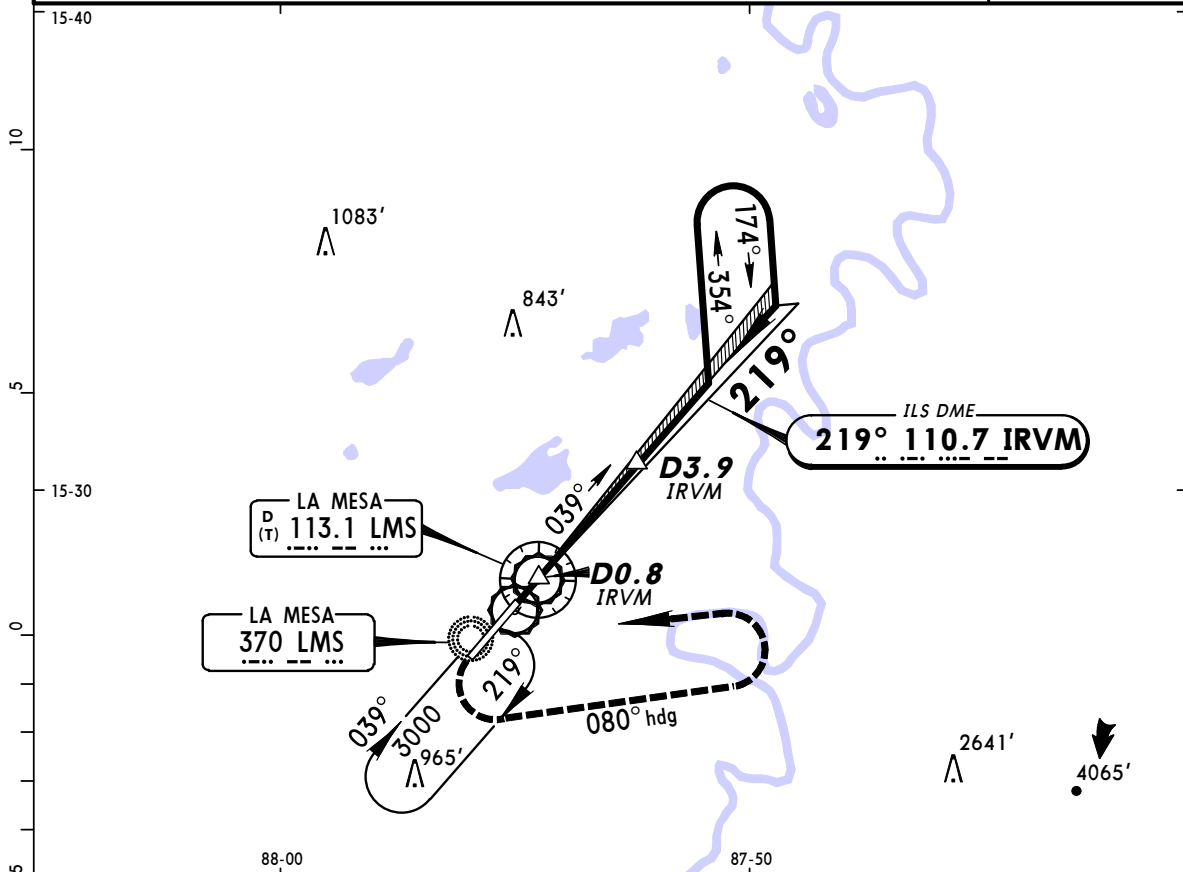
RWY		USABLE LENGTHS			
		Threshold	Landing Beyond Glide Slope	TAKE-OFF	WIDTH
04	RL REIL PAPI-L (angle 3.0°)	8537'	2602m		148' 45m
22	RL ALSF-1 REIL PAPI-L (angle 3.0°)		8129'	2478m	

TAKE-OFF

	AIR CARRIER (JAA)		AIR CARRIER (FAR 121)	
	LVP must be in Force All Rwys RCLM (Day only) or RL	All Rwys RCLM (Day only) or RL	All Rwys Adequate Vis Ref	
A			2 Eng	400m
B	RVR 250m	RVR 400m	3 & 4 Eng	
C				
D	RVR 300m			

MHLM/SAP **JEPPESEN SAN PEDRO SULA, HONDURAS**
RAMON VILLEDA MORALES INTL (11-2) 11 NOV 11
Eff 17 Nov **ILS DME Rwy 22**

*LA MESA Approach (R) 119.7		*LA MESA Tower 118.2		*Ground 121.9	
LOC IRVM 110.7	Final Apch Crs 219°	GS D3.9 IRVM 1300' (1217')	ILS DA(H) 333' (250')	Apt Elev 92' TDZE 83'	
MISSED APCH: Climb within 6 NM, turn LEFT to a heading of 080° climbing to 3000', return to LMS NDB, then request instructions from ATC.					
Alt Set: hPa		TDZ Elev: 3 hPa		Trans level: FL 200	
				Trans alt: 19500'	
					MSA LMS VOR



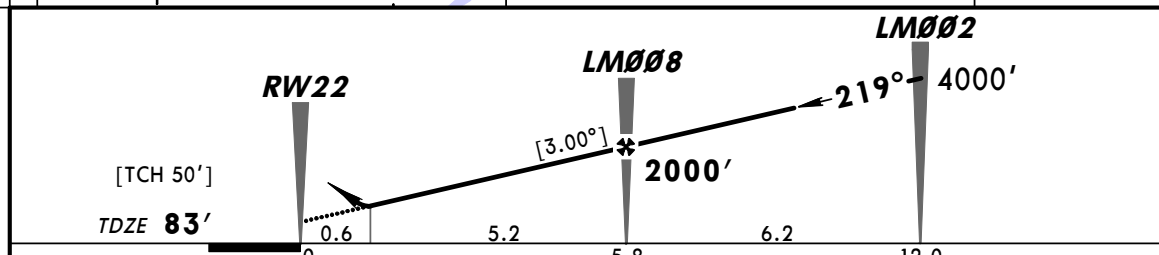
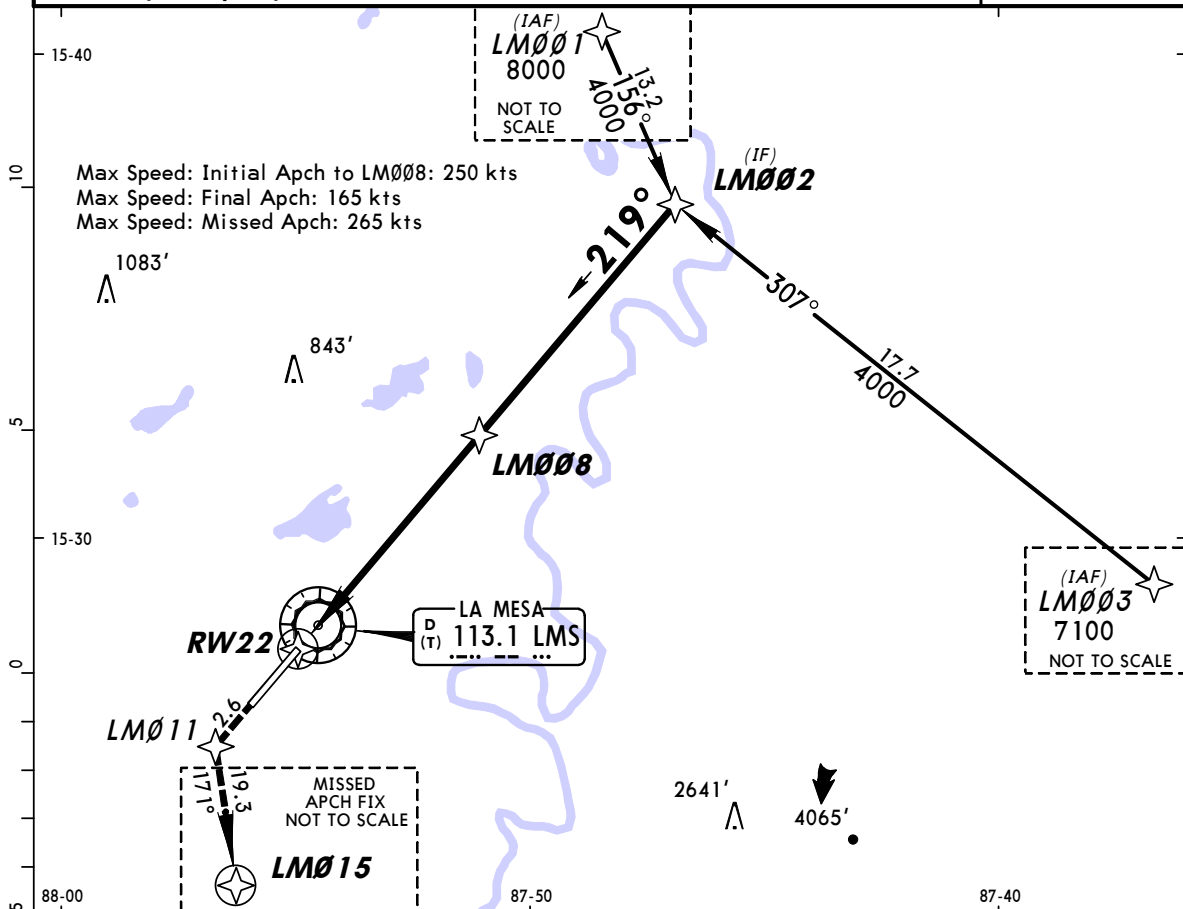
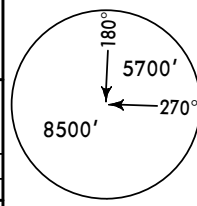
Gnd speed-Kts	70	90	100	120	140	160	ALSIF-1	REIL PAPI	↑ within 6 NM	LT	080° hdg
GS	3.00°	372	478	531	637	743					
FAF to MAP	3.9	3:21	2:36	2:20	1:57	1:40	1:28				

STRAIGHT-IN LANDING RWY22		CEILING REQUIRED		CIRCLE-TO-LAND (TERPS)	
ILS DA(H) 333' (250')		LOC (GS out) MDA(H) 500' (417')		Not Authorized at Night To Rwy 04	
ALS out CEILING-VISIBILITY		ALS out		Max Kts	MDA(H) CEIL-VIS
A	250'- 3/4	500'- 1		90	550' (458') 500'- 1
B				120	550' (458') 500'- 1 1/2
C				140	550' (458') 500'- 1 1/2
D				165	650' (558') 500'- 2 1/4

PANS OPS

MHLM/SAP 11 NOV 11 **JEPPESEN SAN PEDRO SULA, HONDURAS**
RAMON VILLEDA MORALES INTL (12-1) CAT C & D RNAV (GPS) Rwy 22

*LA MESA Approach (R) 119.7		*LA MESA Tower 118.2		*Ground 121.9				
RNAV	Final Apch Crs 219°	Minimum Alt LM008 2000' (1917')	LNAV/VNAV DA(H) 333' (250')	Apt Elev 92' TDZE 83'				
MISSED APCH: Climb to 5600' to LM011 then climbing LEFT turn heading 171° to LM015 and request instructions from ATC.								
		Gnd Spd (KTS)	75	100	150	200	250	300
		Climb Gradient: 260'/NM	325'	433'	650'	867'	1083'	1300'
Alt Set: hPa		TDZ Elev: 3 hPa	Trans level: FL 200		Trans alt: 19500'			
1. GPS capability required. 2. DME/DME not authorized.						MSA LMS VOR		



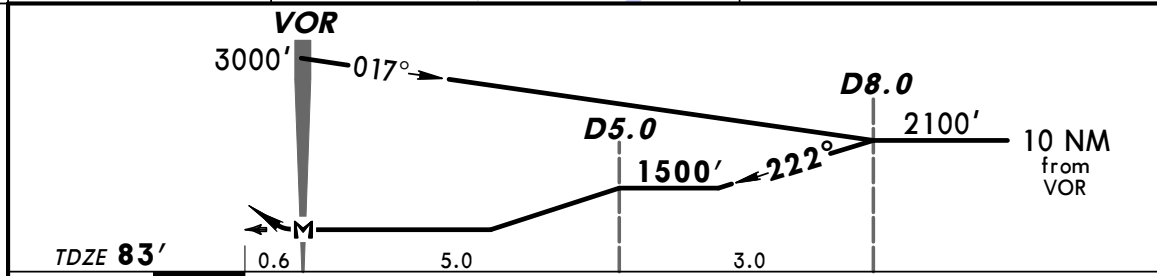
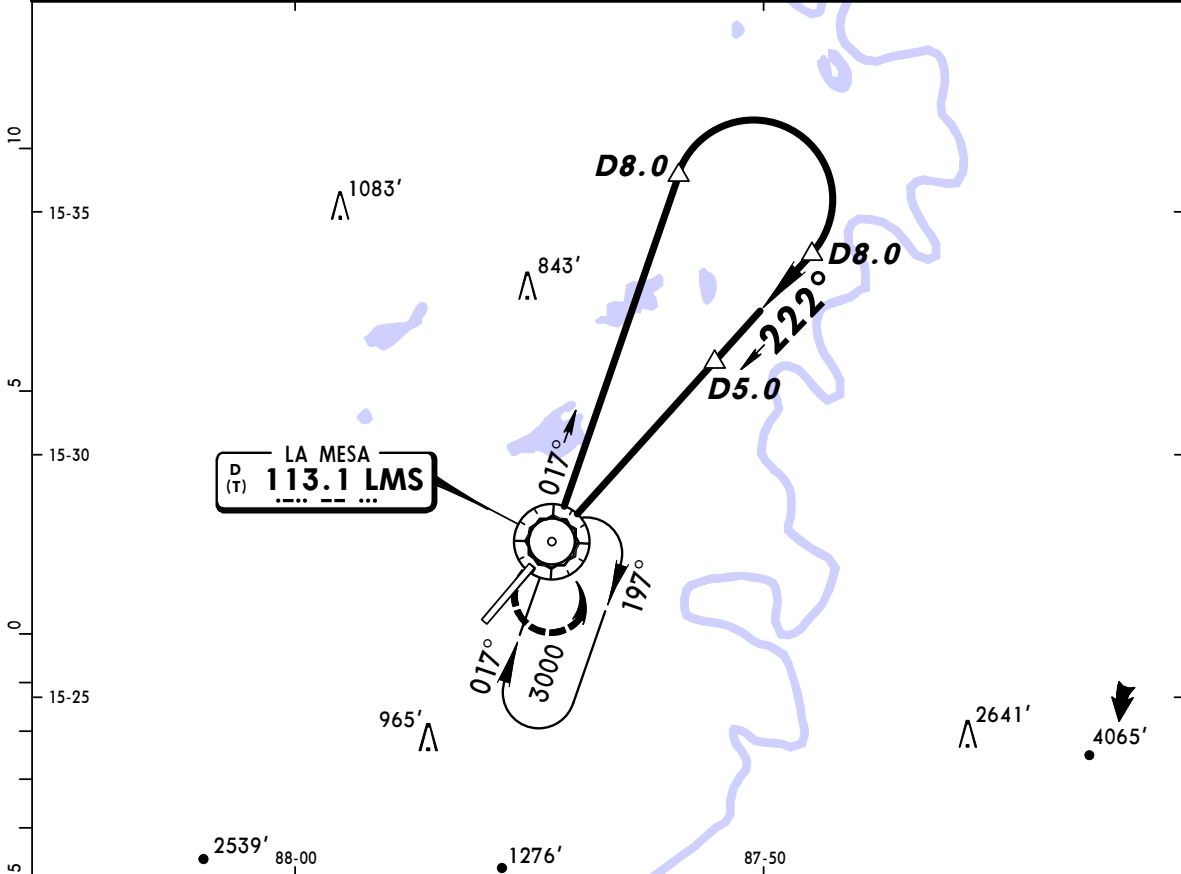
Gnd speed-Kts	70	90	100	120	140	160	ALSF-1 REIL PAPI	5600'	D	LM011
Descent angle [3.00°]	372	478	531	637	743	849				
MAP at DA										

STRAIGHT-IN LANDING RWY 22
 LNAV/VNAV
 DA(H) 333' (250')

A	NA
B	
C	
D	2.6 km

MHLM/SAP **JEPPESEN SAN PEDRO SULA, HONDURAS**
RAMON VILLEDA MORALES INTL (13-1) **11 NOV 11** **VOR DME Rwy 22**
Eff 17 Nov

*LA MESA Approach (R) 119.7		*LA MESA Tower 118.2		*Ground 121.9	
VOR LMS 113.1	Final Apch Crs 222°	Minimum Alt D5.0 1500' (1417')	MDA(H) 860' (777')	Apt Elev 92'	TDZE 83'
MISSED APCH: Climbing LEFT turn to 3000', then return to LMS VOR and hold. Request instructions from ATC.					
Alt Set: hPa		TDZE Elev: 3 hPa	Trans level: FL 200	Trans alt: 19500'	MSA LMS VOR



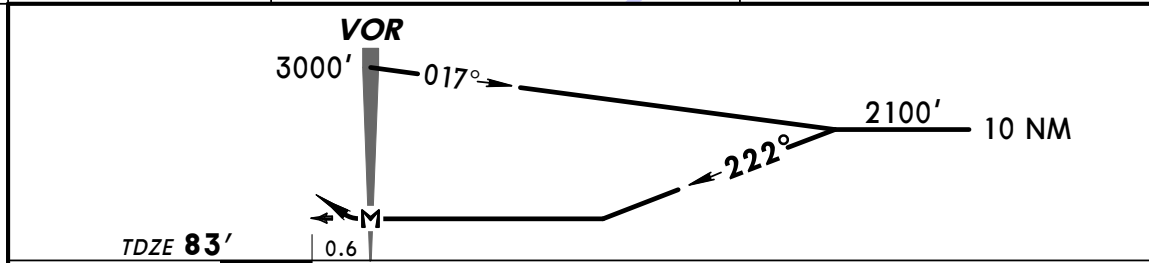
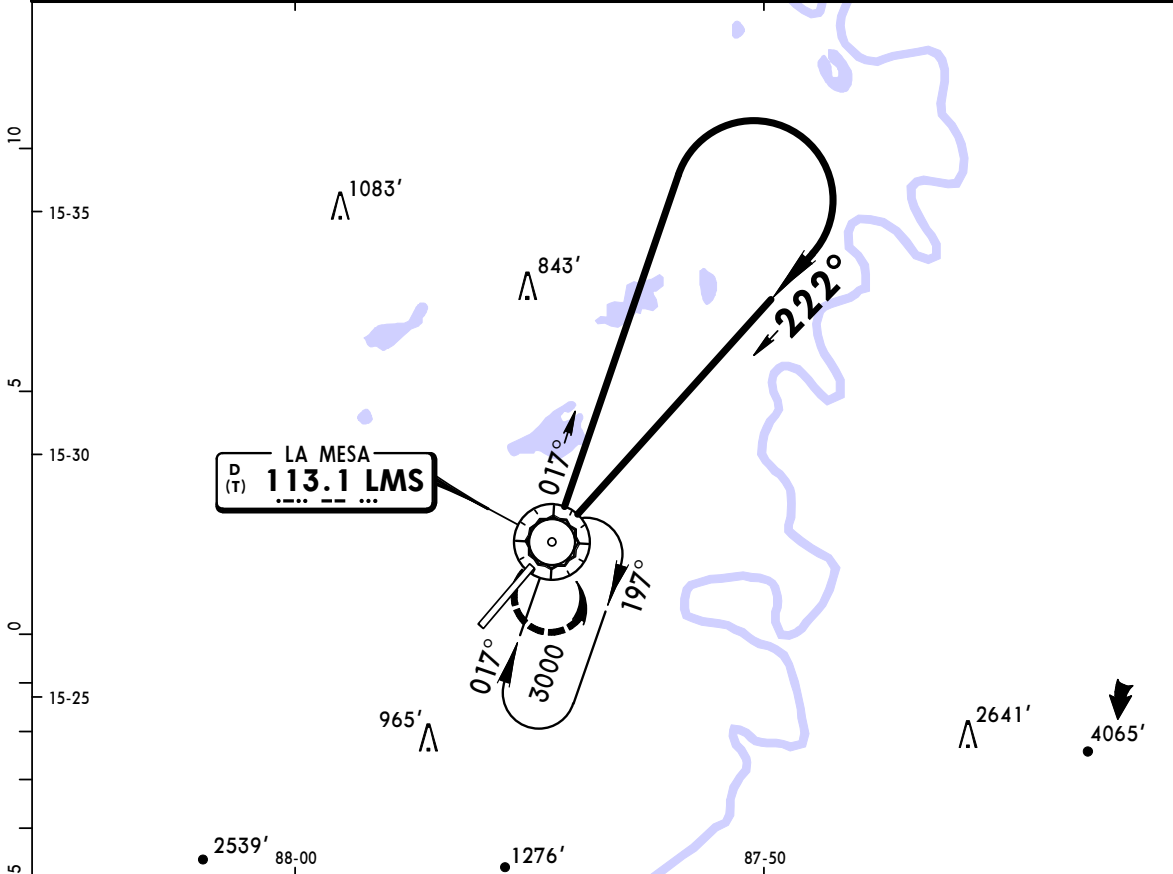
MAP at VOR				ALSF-I REIL PAPI 3000' LT LMS 113.1
------------	--	--	--	---

STRAIGHT-IN LANDING RWY 22			CEILING REQUIRED		CIRCLE-TO-LAND (TERPS)	
MDA(H) 860' (777')			Max Kts		Not Authorized at Night to Rwy 04	
A	CEILING-VISIBILITY	ALS out	90	MDA(H)	CEIL-VIS	
B	800'-1		120	860' (768')	800'-1 1/2	
C			140	860' (768')	800'-2	
D	800'-2		165			

PANS OPS

MHLM/SAP **JEPPESEN SAN PEDRO SULA, HONDURAS**
RAMON VILLEDA MORALES INTL (13-2) 11 NOV 11 **VOR Rwy 22**
Eff 17 Nov

*LA MESA Approach (R) 119.7		*LA MESA Tower 118.2		*Ground 121.9	
VOR LMS 113.1	Final Apch Crs 222°	No FAF	MDA(H) 860' (777')	Apt Elev 92' TDZE 83'	
MISSED APCH: Climbing LEFT turn to 3000', then return to LMS VOR and hold. Request instructions from ATC.					
Alt Set: hPa	TDZ Elev: 3 hPa	Trans level: FL 200	Trans alt: 19500'	MSA LMS VOR	



MAP at VOR				ALSF-I REIL PAPI 3000' LT LMS 113.1
------------	--	--	--	--

STRAIGHT-IN LANDING RWY 22			CEILING REQUIRED	CIRCLE-TO-LAND (TERPS)	
MDA(H) 860' (777')			Not Authorized at Night to Rwy 04		
	CEILING-VISIBILITY	ALS out	Max Kts	MDA(H)	CEIL-VIS
A	800'-1		90	860' (768')	800'-1 1/2
B	800'-1		120		
C	800'-2		140	860' (768')	800'-2
D	800'-2		165		

PANS OPS