

MGMM/FRS
 MUNDO MAYA INTL

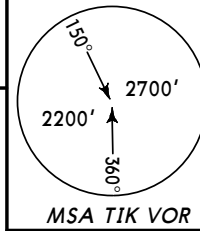
JEPPESEN
 12 APR 13 10-3

FLORES, GUATEMALA

SID

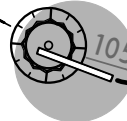
Apt Elev
 427'

Trans level: FL200 Trans alt: 19500'

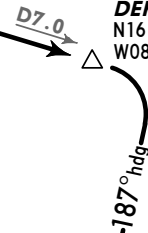


ACTUN DEPARTURE
 [ACTUN]
 (RWY 10)

TIKAL
 D 113.3 TIK
 N16 55.1 W089 52.6



DEROS
 N16 53.0
 W089 45.6



TUCAN
 N16 31.1
 W090 00.1

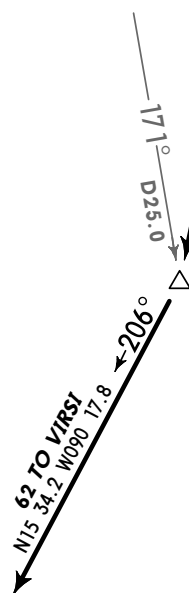
At or above
 5000'



G757
 5000

MADEL
 N16 30.3
 W089 49.6

At or above
 5000'



INITIAL CLIMB

Climb on TIK R-105 to D7.0 TIK, turn RIGHT to heading 187° to MADEL, then according to ATC instructions.

MGMM/FRS
MUNDO MAYA INTL

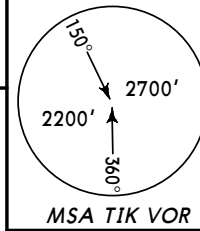
JEPPESEN
 12 APR 13 **(10-3A)**

FLORES, GUATEMALA

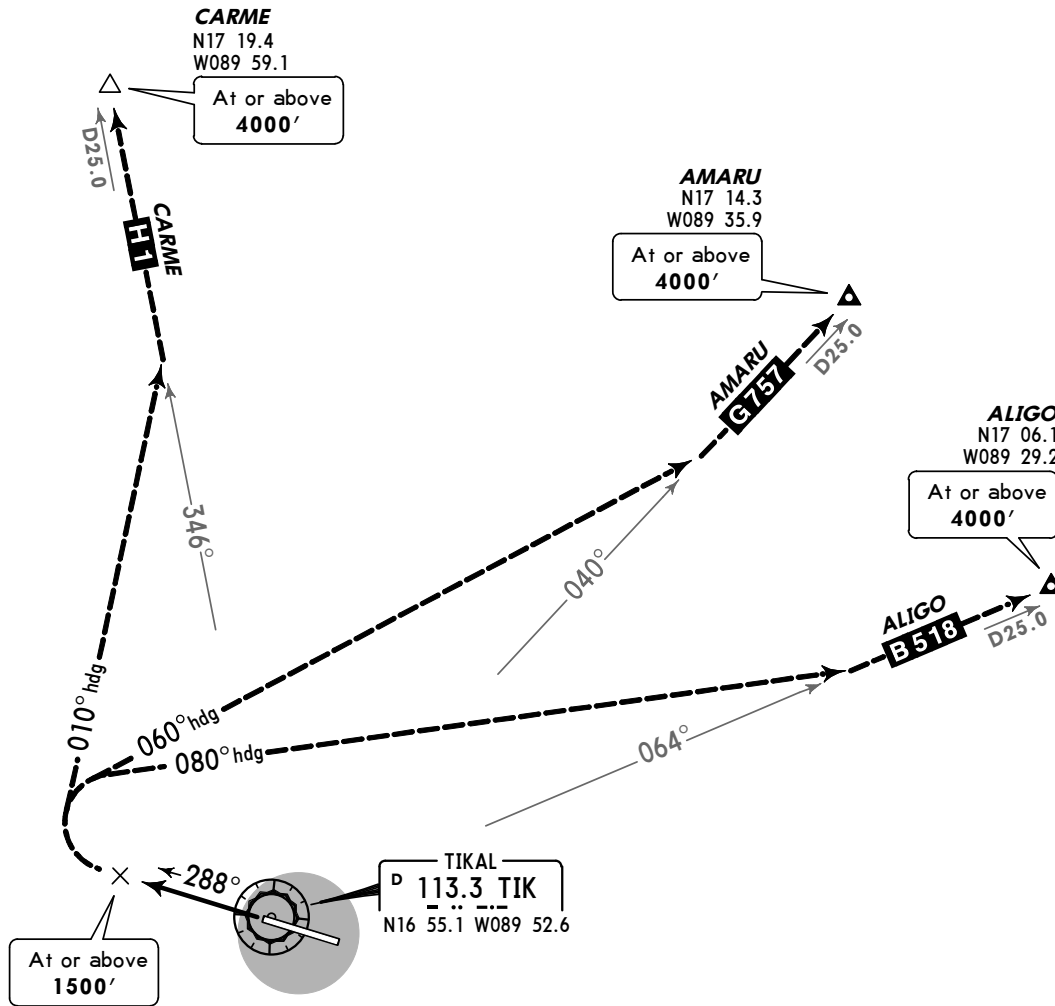
SID

Apt Elev
 427'

Trans level: FL200 Trans alt: 19500'



BENIT DEPARTURE
 (RWY 28)



INITIAL CLIMB

Climb on runway heading.

TRANSITIONS

ALIGO	Reaching 1500' or above turn RIGHT on 080° heading to intercept B-518, then according to ATC instructions.
AMARU	Reaching 1500' or above turn RIGHT on 060° heading to intercept G-757, then according to ATC instructions.
CARME	Reaching 1500' or above turn RIGHT on 010° heading to intercept H-1, then according to ATC instructions.

MGMM/FRS
 MUNDO MAYA INTL

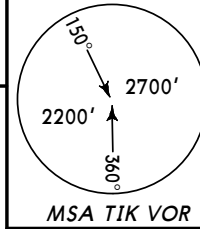
JEPPESEN
 12 APR 13 (10-3B)

FLORES, GUATEMALA

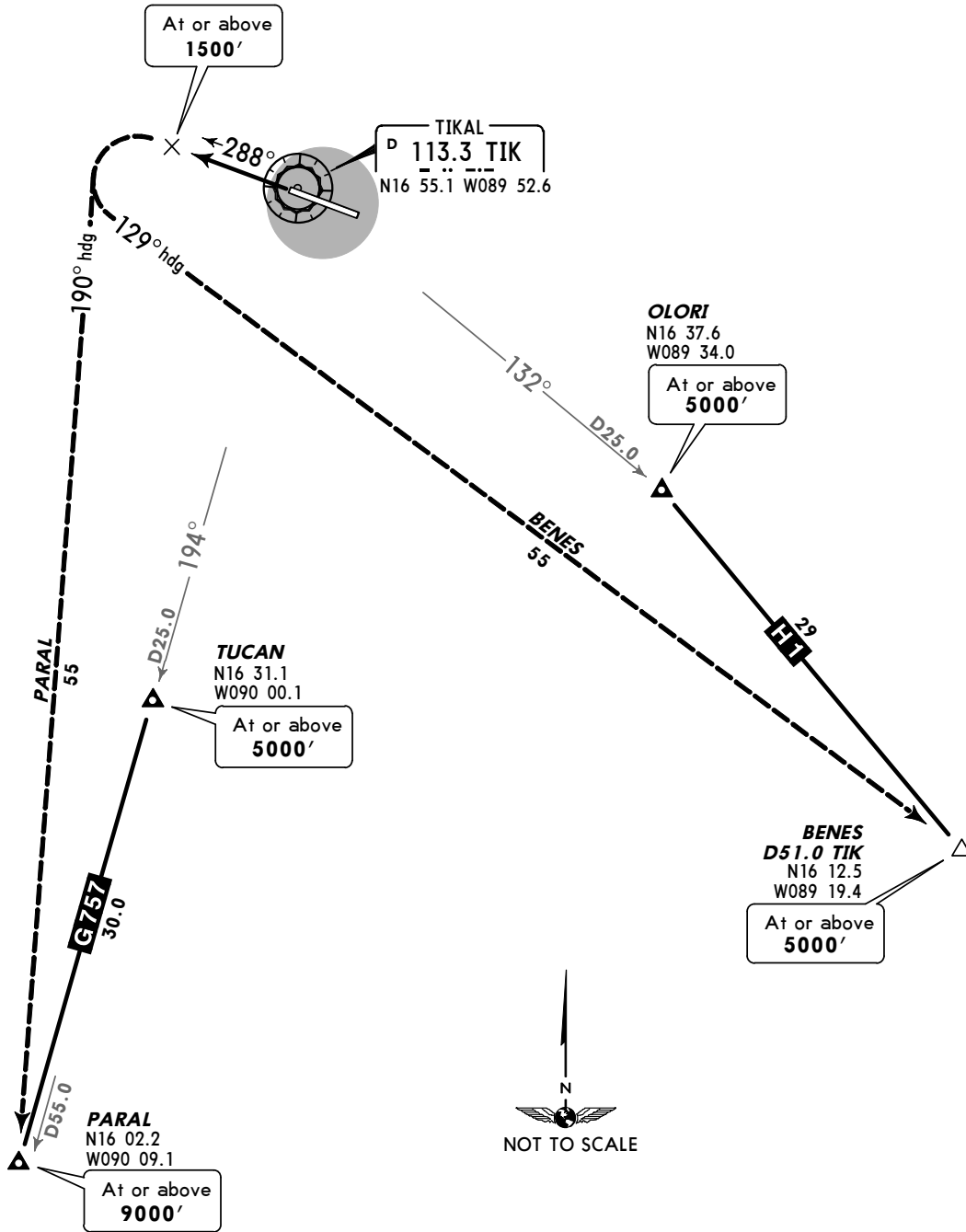
SID

Apt Elev
 427'

Trans level: FL200 Trans alt: 19500'



ITZAS DEPARTURE
 (RWY 28)



INITIAL CLIMB

Climb on runway heading.

TRANSITIONS

BENES	Reaching 1500' or above turn LEFT on 129° heading to intercept BENES , then according to ATC instructions.
PARAL	Reaching 1500' or above turn LEFT on 190° heading to intercept PARAL , then according to ATC instructions.

MGMM/FRS
MUNDO MAYA INTL

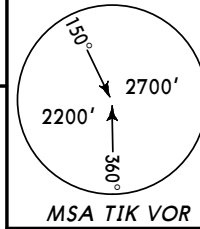
JEPPESEN
 12 APR 13 **10-3C**

FLORES, GUATEMALA

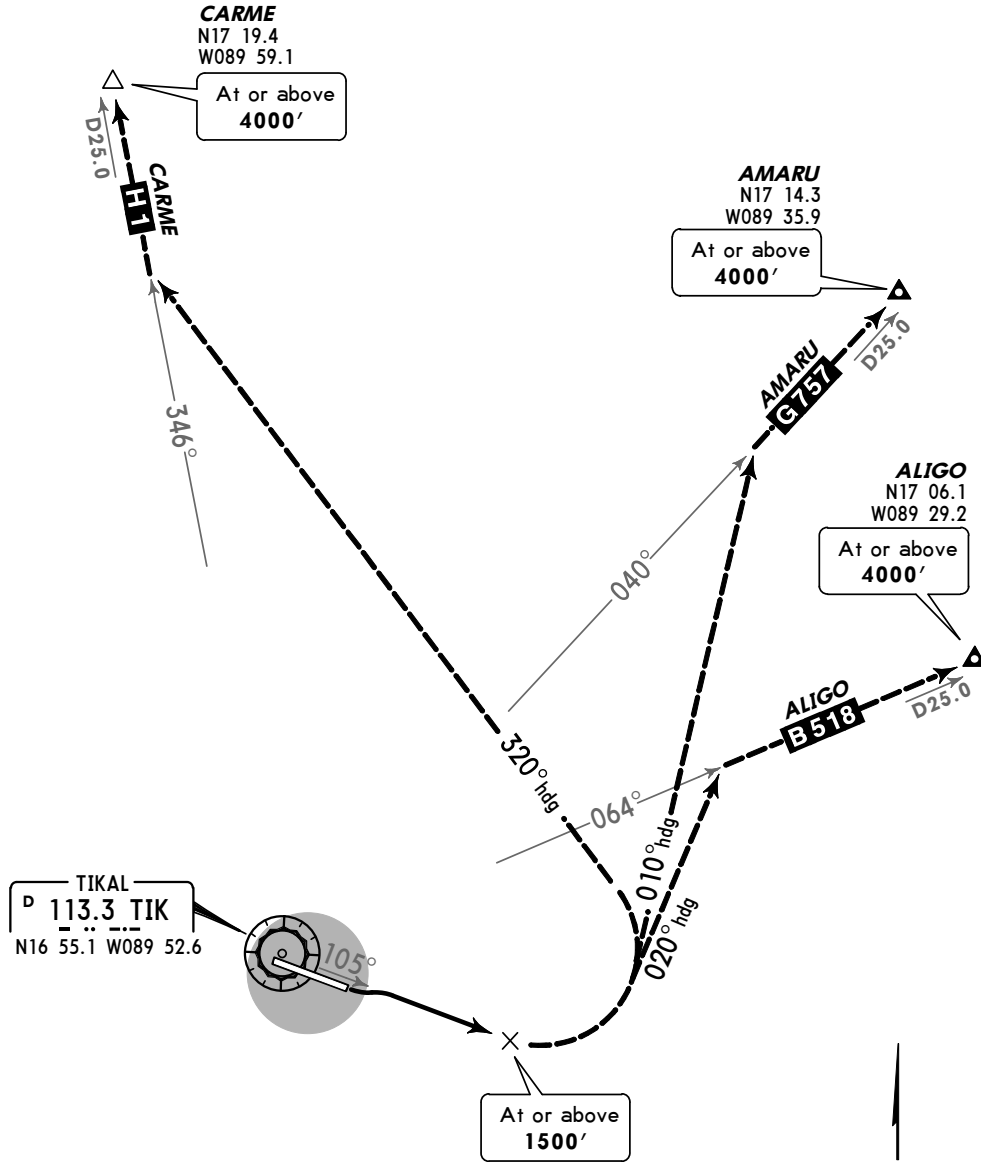
SID

Apt Elev
 427'

Trans level: FL200 Trans alt: 19500'



MAYAS DEPARTURE
 (RWY 10)



INITIAL CLIMB

Climb on TIK R-105.

TRANSITIONS

ALIGO	Reaching 1500' or above turn LEFT on 020° heading to intercept B-518 , then according to ATC instructions.
AMARU	Reaching 1500' or above turn LEFT on 010° heading to intercept G-757 , then according to ATC instructions.
CARMÉ	Reaching 1500' or above turn LEFT on 320° heading to intercept H-1 , then according to ATC instructions.

MGMM/FRS
MUNDO MAYA INTL

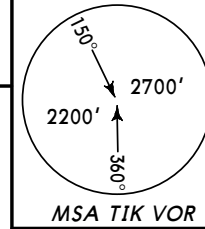
JEPPESEN
 12 APR 13 (10-3D)

FLORES, GUATEMALA

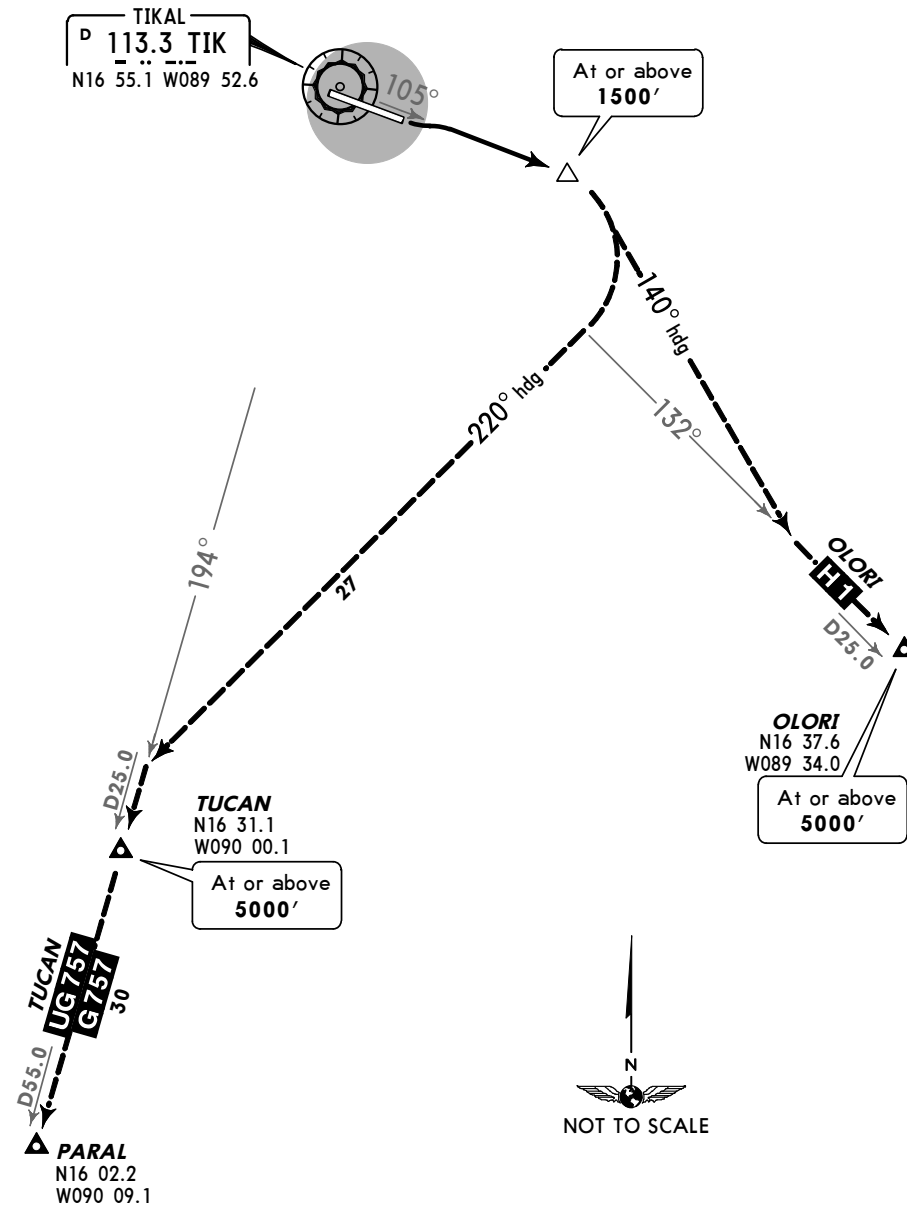
SID

Apt Elev
 427'

Trans level: FL200 Trans alt: 19500'



PETEN DEPARTURE
 (RWY 10)



INITIAL CLIMB

Climb on TIK R-105.

TRANSITIONS

OLORI	Reaching 1500' or above turn RIGHT on 140° heading to intercept H-1, then according to ATC instructions.
TUCAN	Reaching 1500' or above turn RIGHT on 220° heading to intercept G-757, then according to ATC instructions.

MGMM/FRS
 MUNDO MAYA INTL

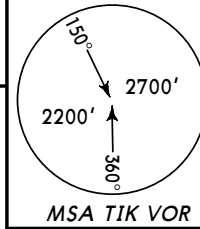
JEPPESEN
 12 APR 13 (10-3E)

FLORES, GUATEMALA

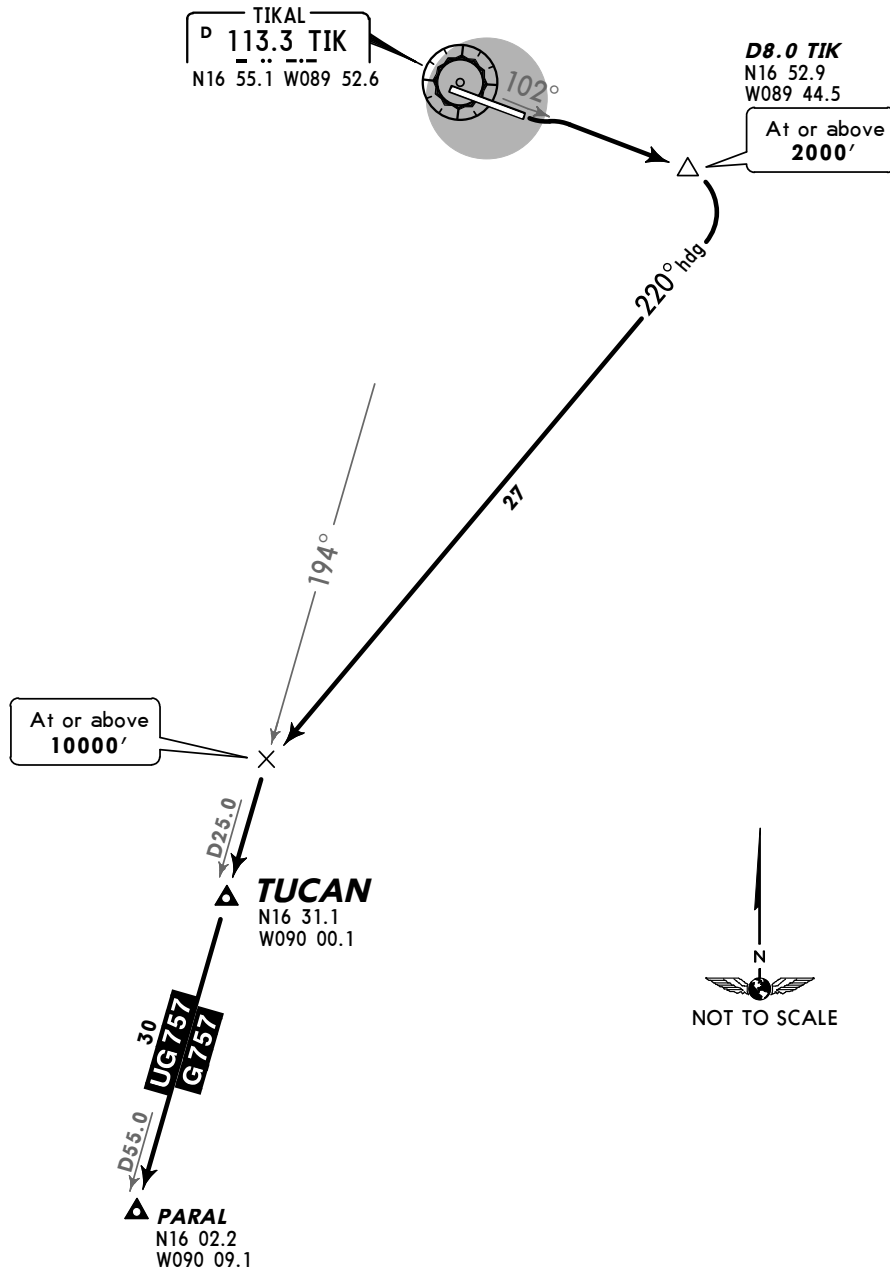
SID

Apt Elev
 427'

Trans level: FL200 Trans alt: 19500'



TUCAN DEPARTURE
 [TUCAN]
 (RWY 10)



This SID requires a minimum climb gradient of 400' per NM.

Gnd speed-KT	75	100	150	200	250	300
400' per NM	500	667	1000	1333	1667	2000

INITIAL CLIMB

Climb on TIK R-102 to cross D8.0 TIK at or above 2000', then turn RIGHT heading 220° climbing to at or above 10000' to intercept TIK R-194 in accordance with ATC instructions.

MGMM/FRS
MUNDO MAYA INTL

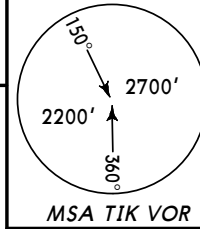
JEPPESEN
 12 APR 13 **(10-3F)**

FLORES, GUATEMALA

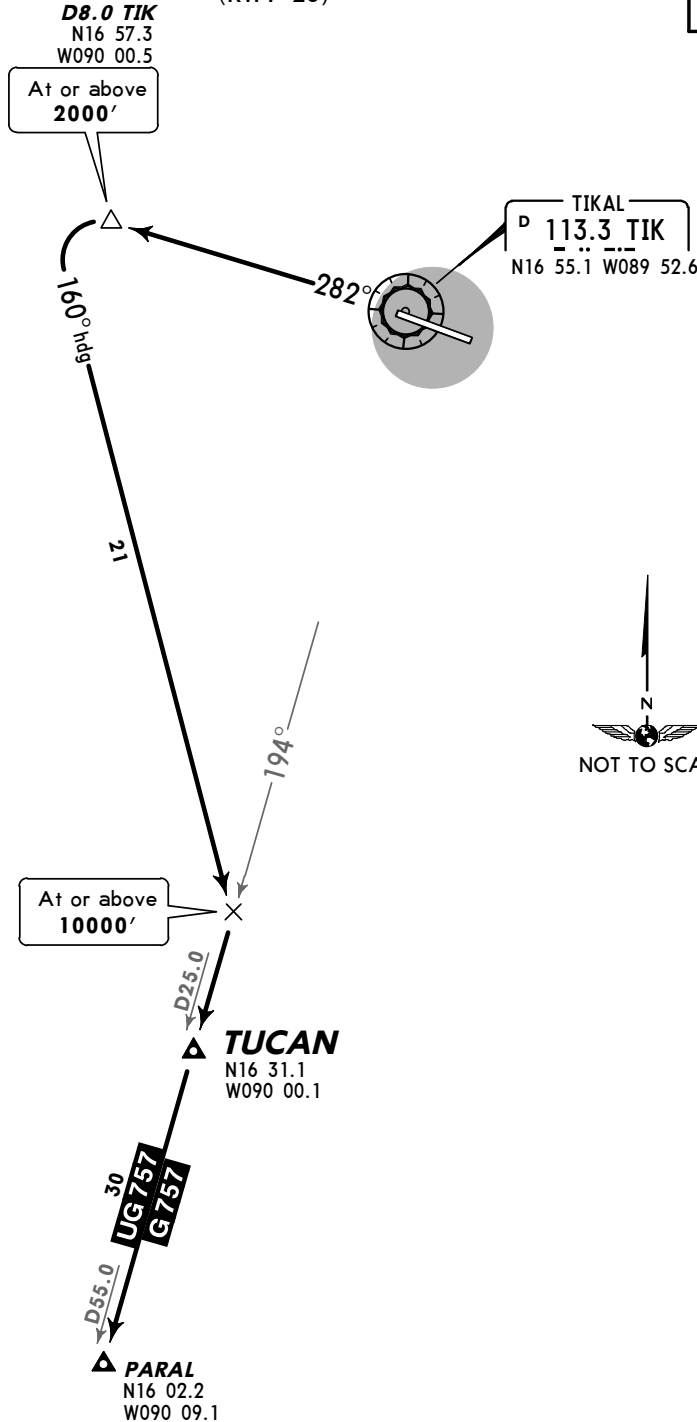
SID

Apt Elev
 427'

Trans level: FL200 Trans alt: 19500'



TUCAN DEPARTURE
[TUCAN]
 (RWY 28)



This SID requires a minimum climb gradient of 300' per NM.

Gnd speed-KT	75	100	150	200	250	300
300' per NM	375	500	750	1000	1250	1500

INITIAL CLIMB

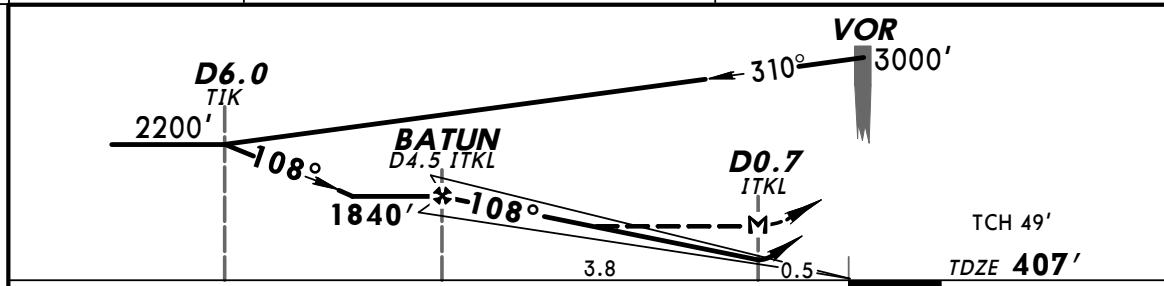
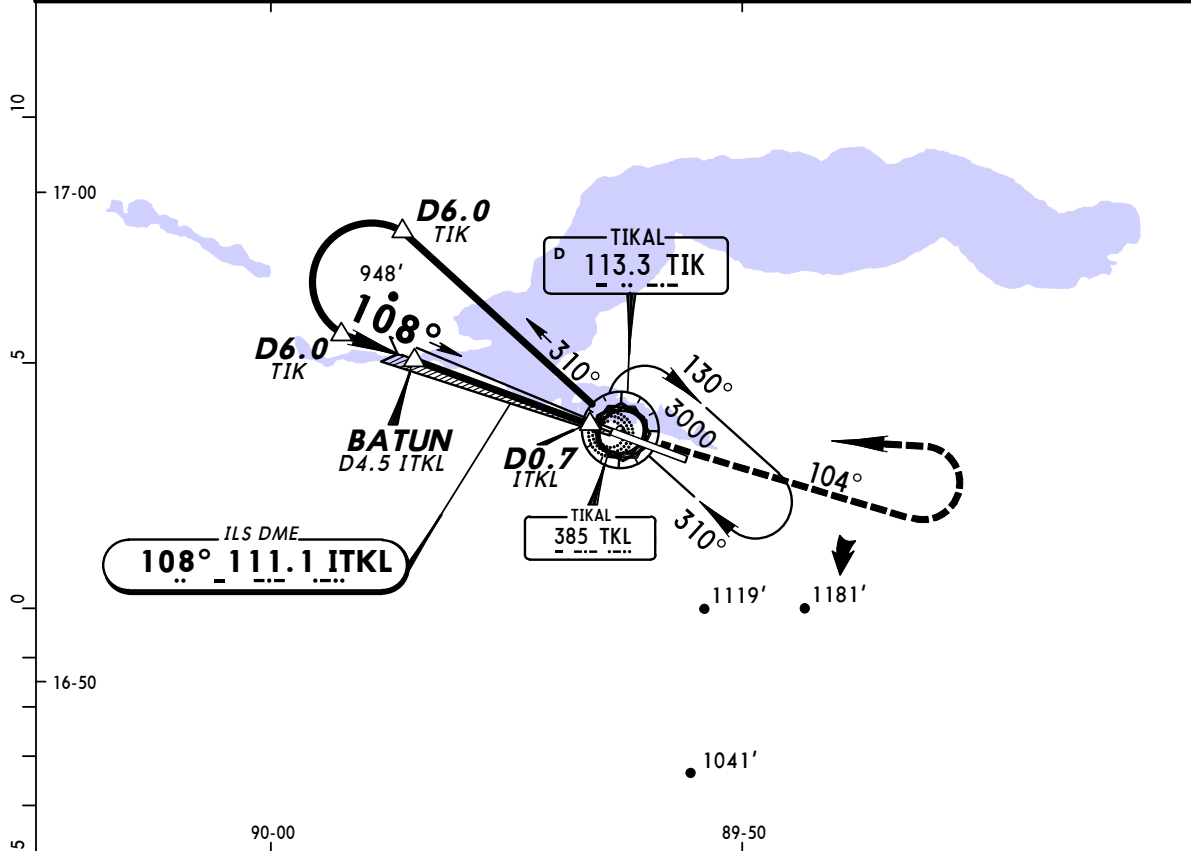
Climb on TIK R-282 to cross D8.0 TIK at or above **2000'**, then turn LEFT to 160° heading climbing to at or above **10000'** to intercept TIK R-194 in accordance with ATC instructions.

MGMM/FRS
MUNDO MAYA INTL

JEPPESEN
 12 APR 13 **(11-1)**

FLORES, GUATEMALA
ILS DME 1 Rwy 10

TIKAL Approach (R)		TIKAL Tower		Ground	
121.4		118.3		121.9	
LOC ITKL 111.1	Final Apch Crs 108°	Minimum Alt BATUN 1840' (1433')	ILS DA(H) 607' (200')	Apt Elev 427'	TDZE 407'
MISSED APCH: Climb outbound on TIK VOR R-104 until reaching 2500' then LEFT turn to TIK VOR. Request instructions from APPROACH.					
Alt Set: IN (hPa on req)		Trans level: FL 200		Trans alt: 19000'	



Gnd speed-Kts	70	90	100	120	140	160	SALS REIL PAPI	2500' on	TIK 113.3 R-104	LT	TIK 113.3
GS	3.00°	372	478	531	637	743					
MAP at D0.7 ITKL											

STRAIGHT-IN LANDING RWY 10				CEILING REQUIRED		CIRCLE-TO-LAND	
ILS DA(H) 607' (200')		LOC (GS out) MDA(H) 840' (433')		Not Authorized South of Rwy			
FULL		ALS out		Max Kts		MDA(H) CEIL-VIS	
200' - 3/4		500' - 3/4		90		1400' (973') 1000' - 1 1/4	
		500' - 1		120		1600' (1173') 1200' - 1 1/2	
		500' - 1 1/4		140		1700' (1273') 1300' - 3	
		500' - 1		165			

MGMM/FRS

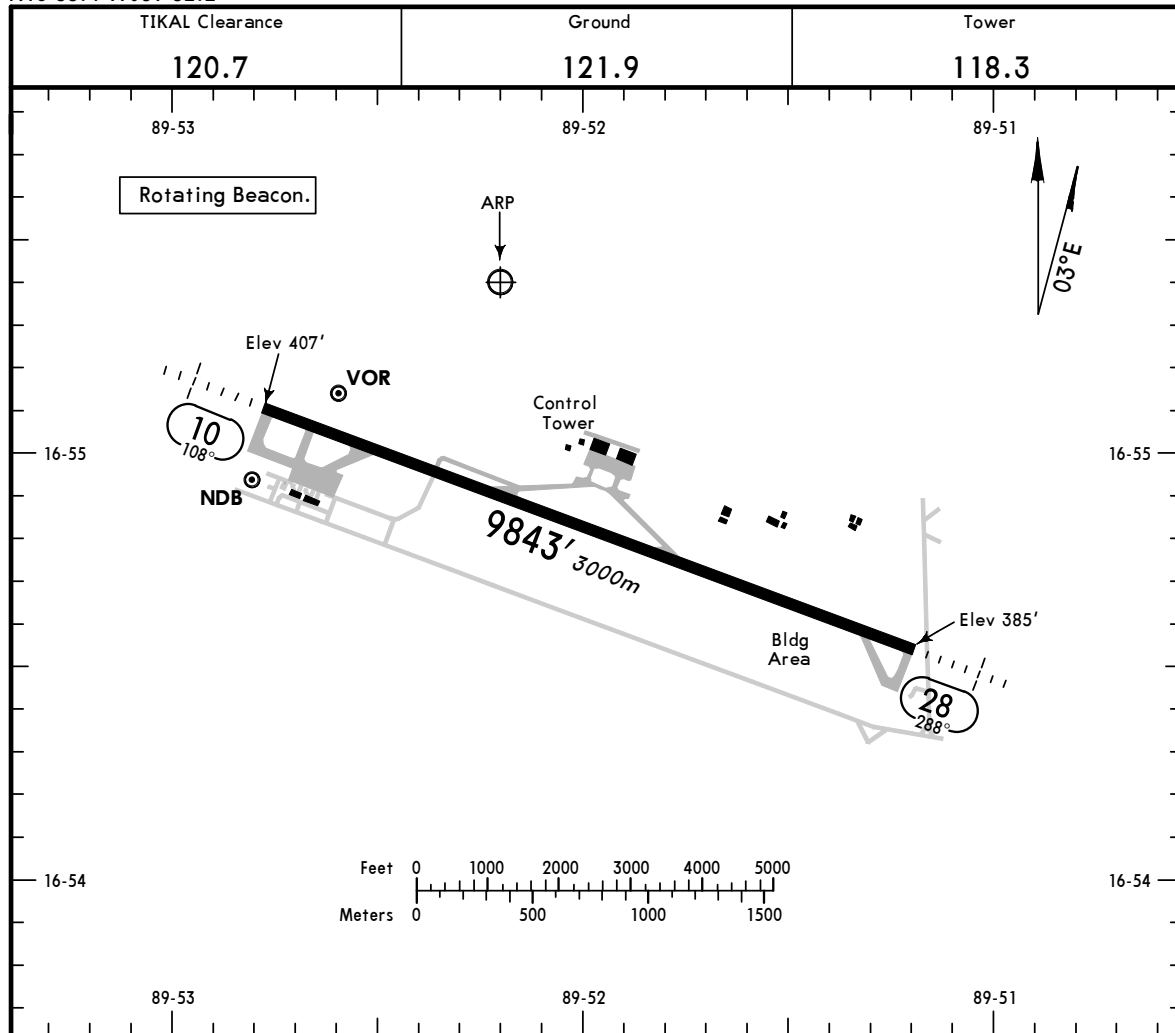
Apt Elev **427'**
 N16 55.4 W089 52.2

JEPPESEN

12 APR 13 **(11-1)**

FLORES, GUATEMALA

MUNDO MAYA INTL



ADDITIONAL RUNWAY INFORMATION

RWY	HIRL	SALS	REIL	PAPI-L	USABLE LENGTHS		TAKE-OFF	WIDTH
					Threshold	Glide Slope		
10						8775'	2675m	148'
28								45m

TAKE-OFF

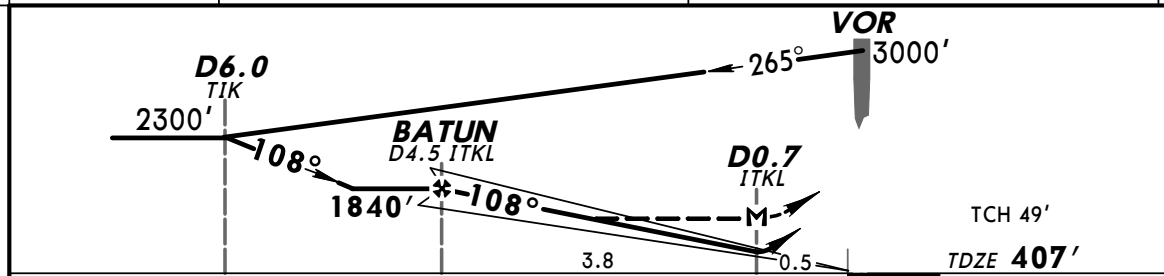
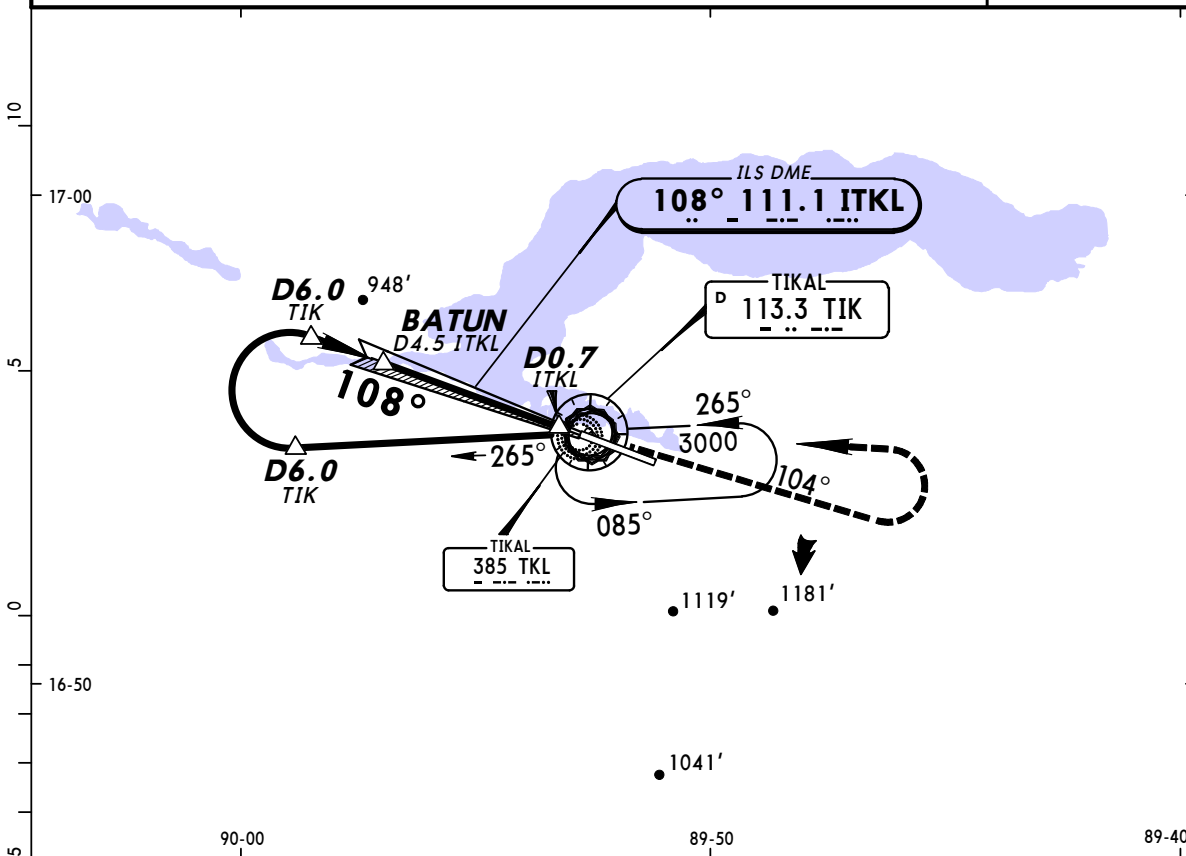
	AIR CARRIER (JAA) All Rwys RCLM (Day only) or RL		AIR CARRIER (FAR 121) All Rwys Adequate Vis Ref	
	A	1/4	2 Eng	1/4
B				
C				
D				

MGMM/FRS
MUNDO MAYA INTL



FLORES, GUATEMALA
ILS DME 2 Rwy 10

TIKAL Approach (R)		TIKAL Tower			Ground
121.4		118.3			121.9
LOC ITKL 111.1	Final Apch Crs 108°	Minimum Alt BATUN 1840' (1433')	ILS DA(H) 607' (200')	Apt Elev 427' TDZE 407'	
MISSED APCH: Climb outbound on TIK VOR R-104 until reaching 2500', then LEFT turn to TIK VOR. Request instructions from APPROACH.					
Alt Set: IN (hPa on req)		Trans level: FL 200		Trans alt: 19000'	
					MSA TIK VOR



Gnd speed-Kts	70	90	100	120	140	160	SALS REIL PAPI	2500'	TIK 113.3 R-104	LT	TIK 113.3
GS	3.00°	372	478	531	637	849					
MAP at D0.7 ITKL											

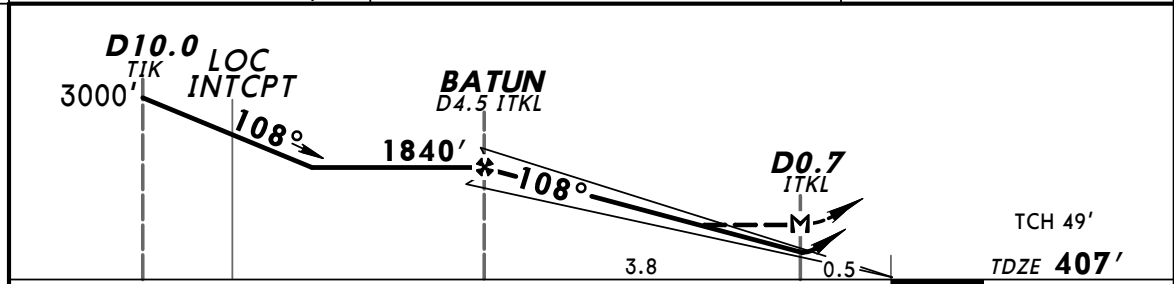
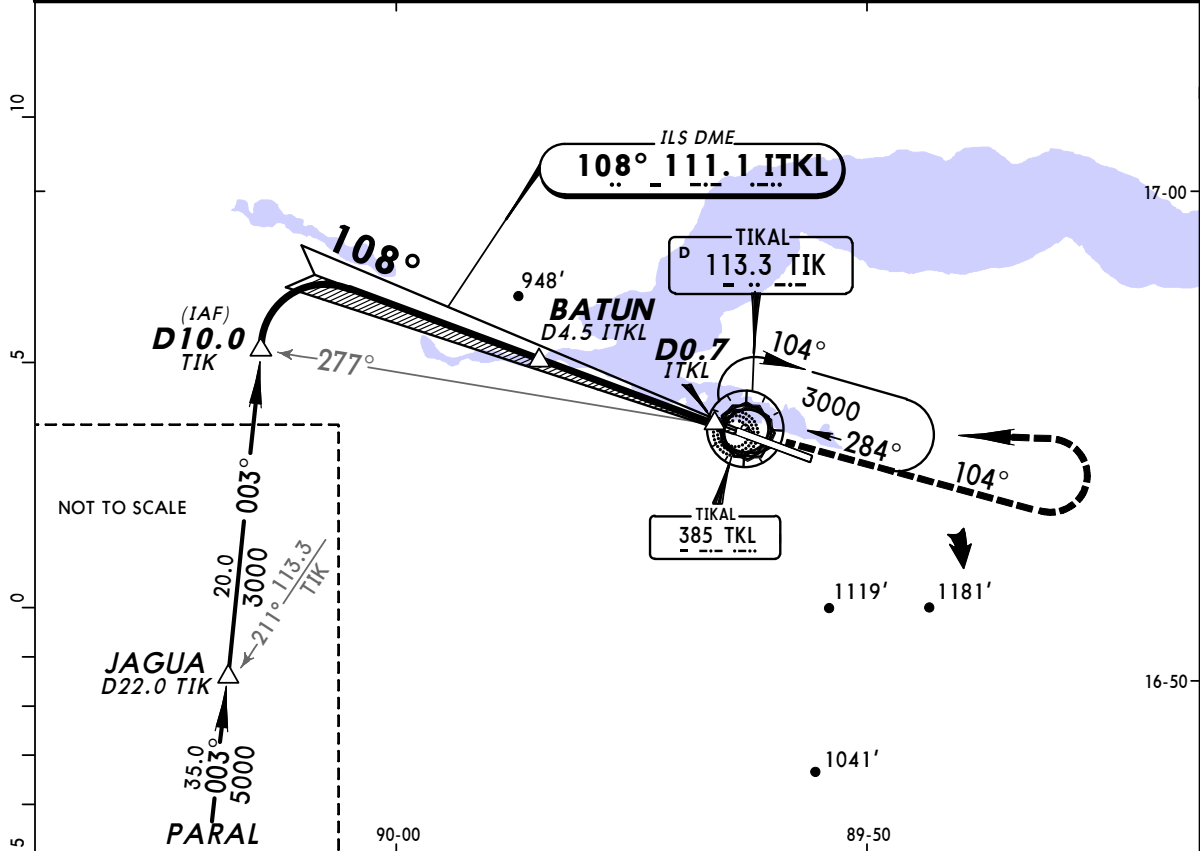
STRAIGHT-IN LANDING RWY 10				CEILING REQUIRED		CIRCLE-TO-LAND	
ILS DA(H) 607' (200')		LOC (GS out) MDA(H) 840' (433')		Not Authorized South of Rwy			
FULL	ALS out	ALS out		Max Kts	MDA(H)	CEIL-VIS	
A		500' - 1		90	1400' (973')	1000' - 1¼	
B		500' - ¾		120	1600' (1173')	1200' - 1½	
C	200' - ¾	500' - 1¼		140	1700' (1273')	1300' - 3	
D		500' - 1		165			

MGMM/FRS
MUNDO MAYA INTL

JEPPESEN
 12 APR 13 **(11-3)**

FLORES, GUATEMALA
ILS DME 3 Rwy 10

TIKAL Approach(R)		TIKAL Tower			Ground
21.4		118.3			121.9
LOC ITKL 111.1	Final Apch Crs 108°	Minimum Alt BATUN 1840' (1433')	ILS DA(H) 607' (200')	Apt Elev 427' TDZE 407'	
MISSED APCH: Climb outbound on TIK VOR R-104 until reaching 2500', then LEFT turn to TIK VOR. Request instructions from APPROACH.					
Alt Set: IN (hPa on req)		Trans level: FL 200		Trans alt: 19000'	
					MSA TIK VOR



Gnd speed-Kts	70	90	100	120	140	160	SALS REIL PAPI	2500' on ↑	TIK 113.3 R-104	← LT	TIK 113.3
GS	3.00°	372	478	531	637	743					
MAP at D0.7 ITKL											

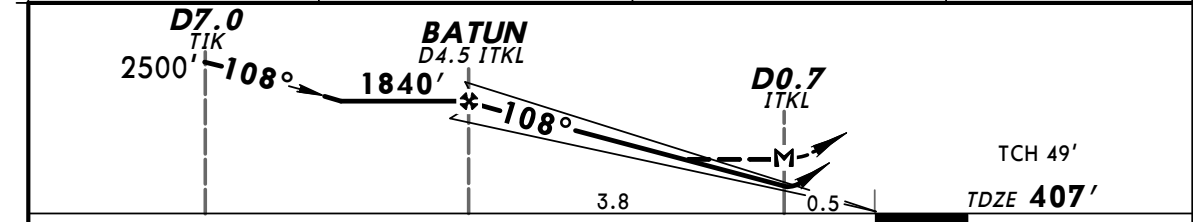
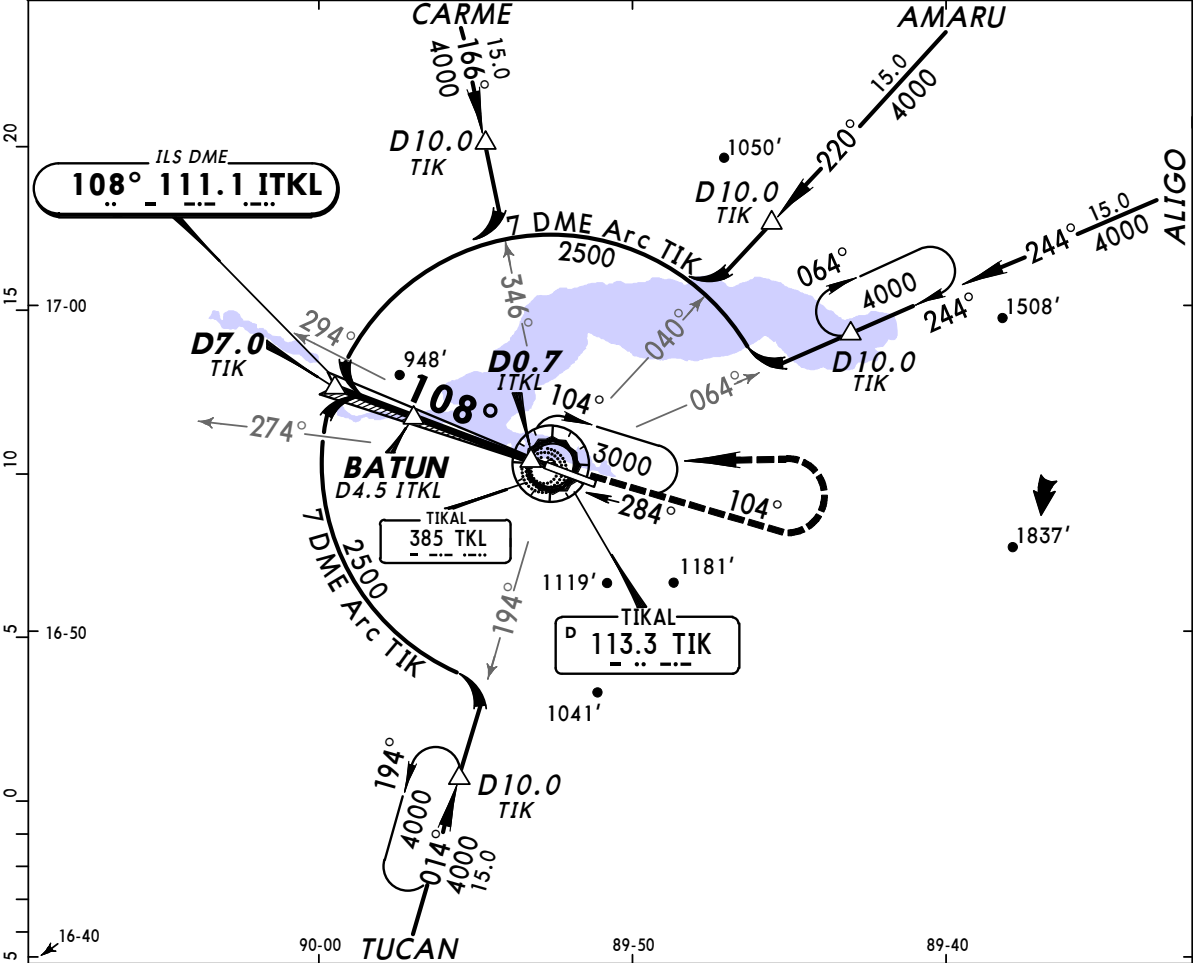
STRAIGHT-IN LANDING RWY 10				CEILING REQUIRED		CIRCLE-TO-LAND	
ILS DA(H) 607' (200')		LOC (GS out) MDA(H) 840' (433')		Not Authorized South of Rwy			
FULL	ALS out	ALS out		Max Kts	MDA(H)	CEIL-VIS	
A		500' - 1		90	1400' (973')	1000' - 1 1/4	
B		500' - 3/4		120	1600' (1173')	1200' - 1 1/2	
C	200' - 3/4	500' - 1 1/4		140	1700' (1273')	1300' - 3	
D		500' - 1		165			

MGMM/FRS
MUNDO MAYA INTL

JEPPESEN
 12 APR 13 **(11-4)**

FLORES, GUATEMALA
ILS 7 DME Arc Rwy 10

TIKAL Approach (R) 121.4		TIKAL Tower 118.3		Ground 121.9	
LOC ITKL 111.1	Final Apch Crs 108°	Minimum Alt BATUN 1840' (1433')	ILS DA(H) 607' (200')	Apt Elev 427' TDZE 407'	
MISSED APCH: Climb outbound on TIK VOR R-104 until reaching 2500', then LEFT turn to TIK VOR. Request instructions from APPROACH.					
Alt Set: IN (hPa on req)		Trans level: FL 200		Trans alt: 19000'	



Gnd speed-Kts	70	90	100	120	140	160	SALS REIL PAPI	2500' ↑ on TIK 113.3 R-104	LT TIK 113.3
GS	3.00°	372	478	531	637	743			
MAP at D0.7 ITKL									

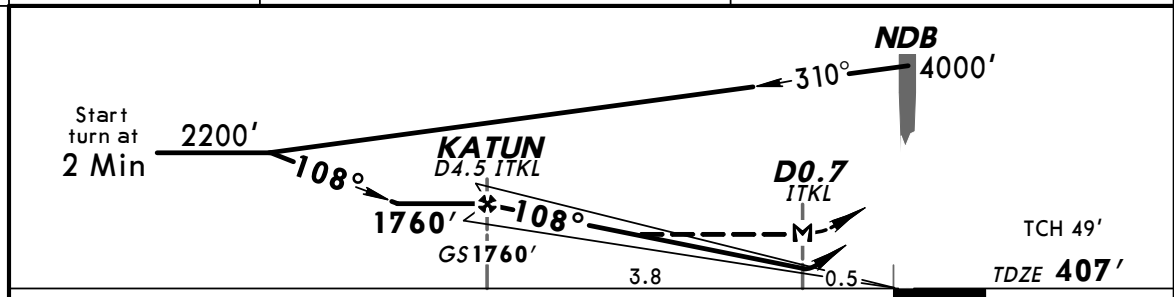
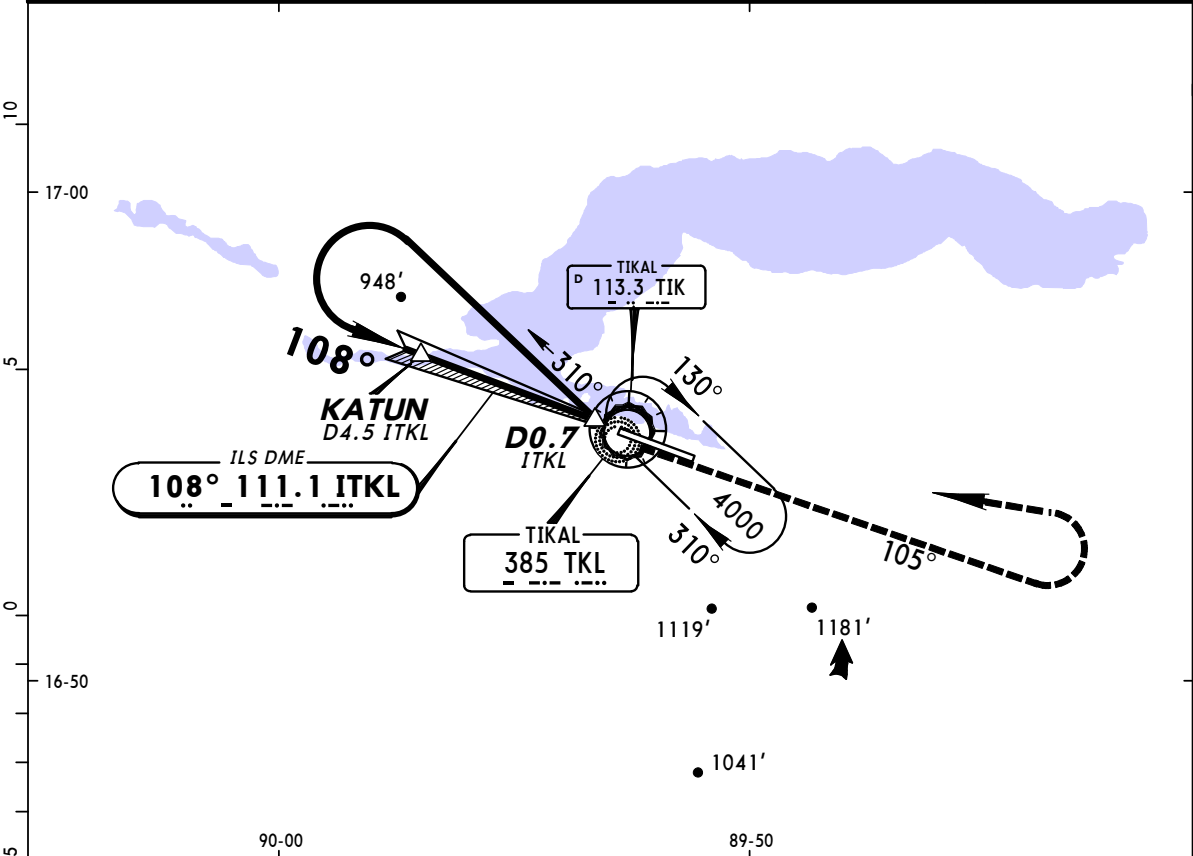
STRAIGHT-IN LANDING RWY 10				CEILING REQUIRED		CIRCLE-TO-LAND	
ILS DA(H) 607' (200')		LOC (GS out) MDA(H) 840' (433')		Not Authorized South of Rwy			
FULL		ALS out		Max Kts	MDA(H)	CEIL-VIS	
200' - 3/4		500' - 3/4		90	1400' (973')	1000' - 1 1/4	
				120	1600' (1173')	1200' - 1 1/2	
				140	1700' (1273')	1300' - 3	
				165			

MGMM/FRS
MUNDO MAYA INTL

JEPPESEN
 12 APR 13 (11-5)

FLORES, GUATEMALA
NDB ILS Rwy 10

TIKAL Approach (R) 121.4		TIKAL Tower 118.3		Ground 121.9	
LOC ITKL 111.1	Final Apch Crs 108°	GS KATUN 1760' (1353')	ILS DA(H) 607' (200')	Apt Elev 427' TDZE 407'	
MISSED APCH: Climb to 2500' on TKL NDB 105° bearing, then LEFT turn climbing to 4000' to TKL NDB.					
Alt Set: IN (hPa on req)		Trans level: FL 200		Trans alt: 19000'	



Gnd speed-Kts	70	90	100	120	140	160	SALS REIL PAPI	2500' ↑ on	TKL 385 105°	4000' ← LT	TKL 385
GS	3.00°	372	478	531	637	743					
MAP at D0.7 ITKL											

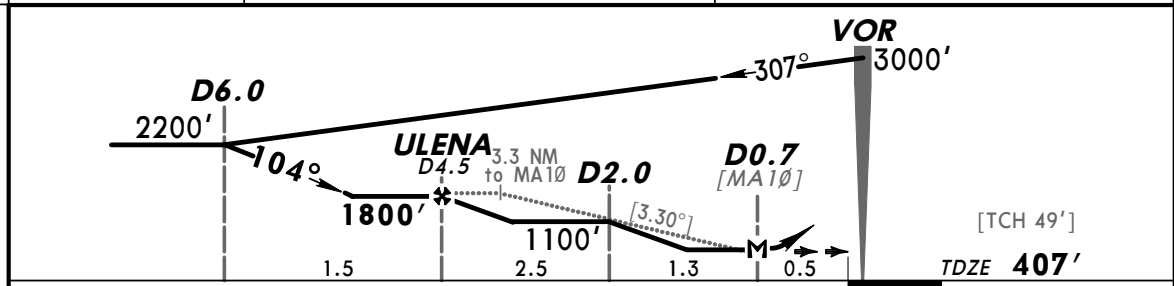
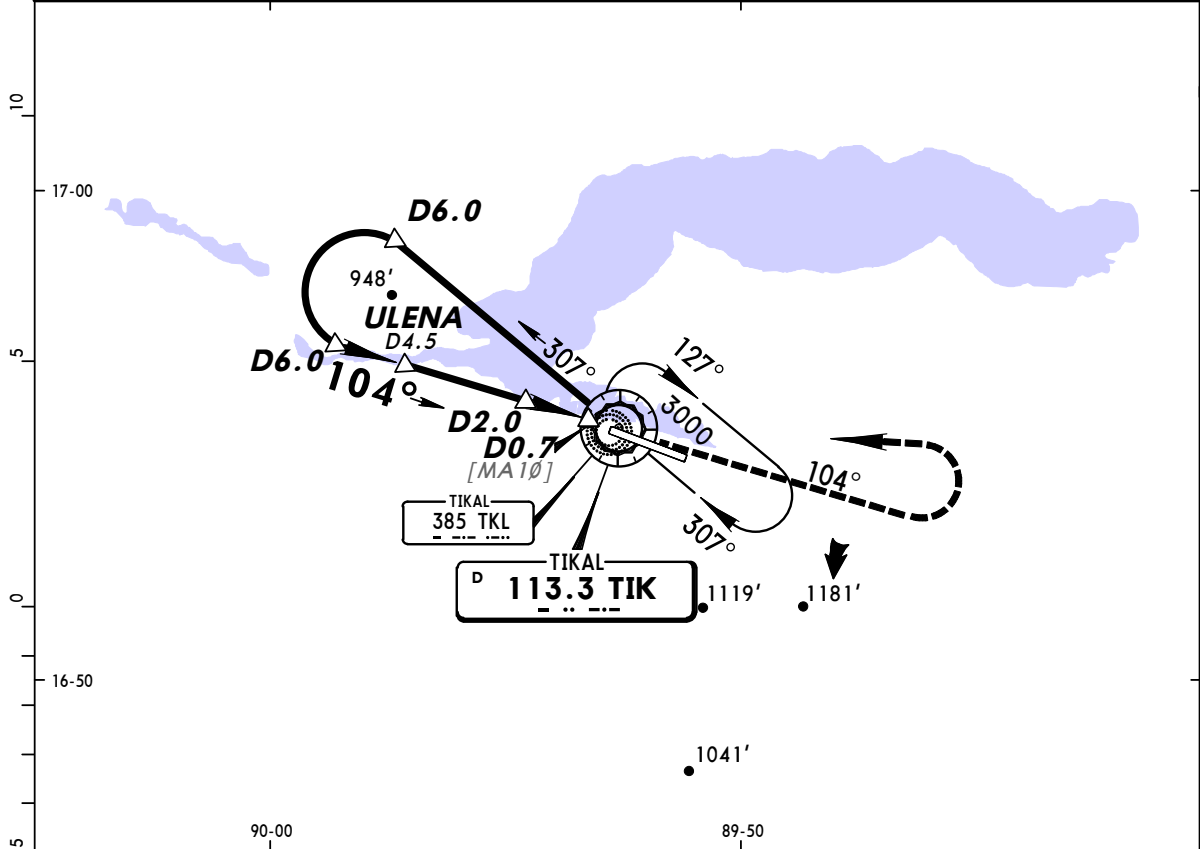
STRAIGHT-IN LANDING RWY 10				CEILING REQUIRED		CIRCLE-TO-LAND	
ILS DA(H) 607' (200')		LOC (GS out) MDA(H) 840' (433')		Not Authorized South of Rwy			
FULL		ALS out		Max Kts	MDA(H)	CEIL-VIS	
A	500' - 1			90	1300' (873')	900' - 1	
B	500' - 1			120	1400' (973')	1000' - 1¼	
C	250' - ¾	500' - 1	500' - 1¼	140	1600' (1173')	1200' - 3	
D		500' - 1½		165	1700' (1273')	1300' - 3	

MGMM/FRS
MUNDO MAYA INTL



FLORES, GUATEMALA
VOR DME 1 Rwy 10

TIKAL Approach (R)		TIKAL Tower			Ground
121.4		118.3			121.9
VOR TIK 113.3	Final Apch Crs 104°	Minimum Alt ULENA 1800' (1393')	MDA(H) 840' (433')	Apt Elev 427' TDZE 407'	
MISSED APCH: Climb outbound on TIK VOR R-104 until reaching 2500', then LEFT turn to TIK VOR. Request instructions from CONTROL.					
Alt Set: IN (hPa on req)		Trans level: FL 200		Trans alt: 19000'	
					MSA TIK VOR



Gnd speed-Kts	70	90	100	120	140	160	SALS REIL PAPI	2500' on TIK 113.3 R-104	← LT	TIK 113.3
Descent Angle [3.30°]	409	526	584	701	817	934				
MAP at D0.7										

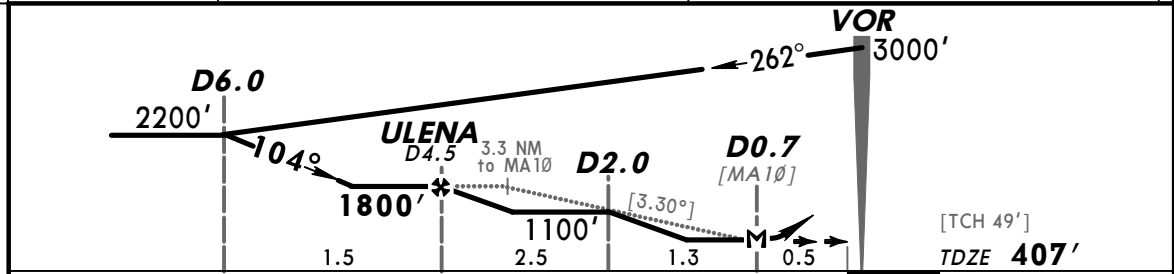
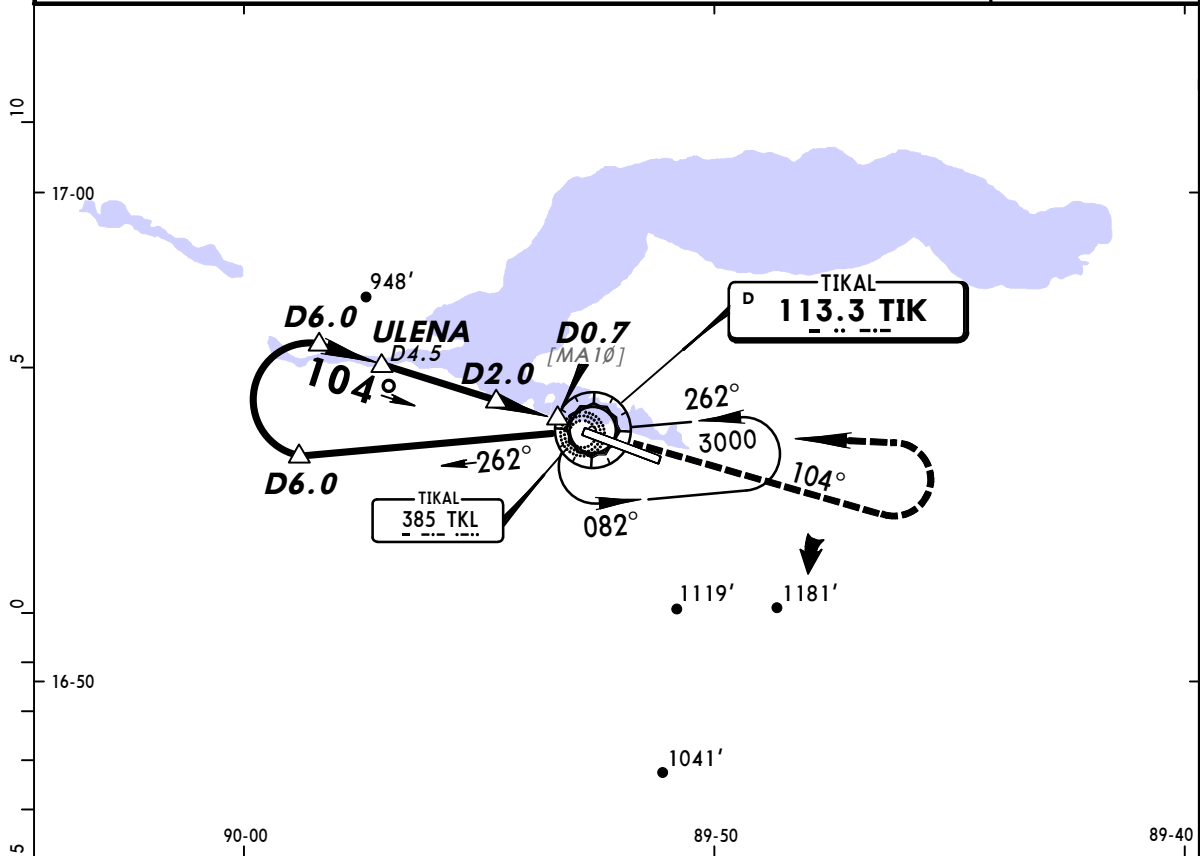
STRAIGHT-IN LANDING RWY 10				CEILING REQUIRED		CIRCLE-TO-LAND	
MDA(H) 840' (433')						Not Authorized South of Rwy	
	CEILING-VISIBILITY		ALS out		Max Kts	MDA(H)	CEIL-VIS
A			500' - 1		90	1400' (973')	1000' - 1¼
B	500' - ¾				120	1600' (1173')	1200' - 1½
C			500' - ¼		140	1700' (1273')	1300' - 3
D	500' - 1		500' - ½		165		

MGMM/FRS
MUNDO MAYA INTL

JEPPESEN
 12 APR 13 **(13-2)**

FLORES, GUATEMALA
VOR DME 2 Rwy 10

TIKAL Approach (R)		TIKAL Tower			Ground
121.4		118.3			121.9
VOR TIK 113.3	Final Apch Crs 104°	Minimum Alt ULENA 1800' (1393')	MDA(H) 840' (433')	Apt Elev 427' TDZE 407'	
MISSED APCH: Climb outbound on TIK VOR R-104 until reaching 2500', then LEFT turn to TIK VOR. Request instructions from CONTROL.					
Alt Set: IN (hPa on req)		Trans level: FL 200		Trans alt: 19000'	



Gnd speed-Kts	70	90	100	120	140	160	SALS REIL PAPI	2500' on ↑	TIK 113.3 R-104	LT	TIK 113.3
Descent Angle [3.30°]	409	526	584	701	817	934					
MAP at D0.7											

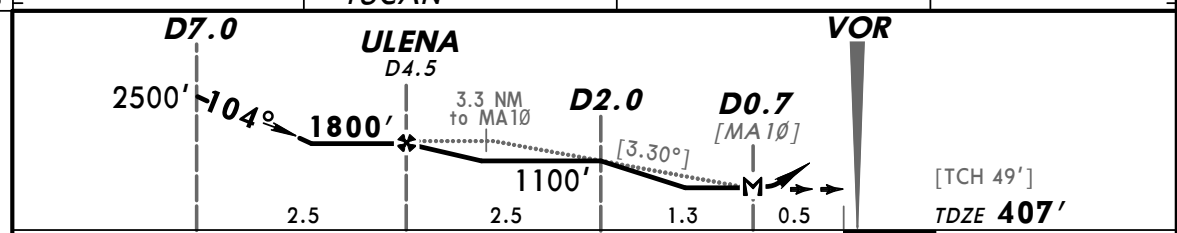
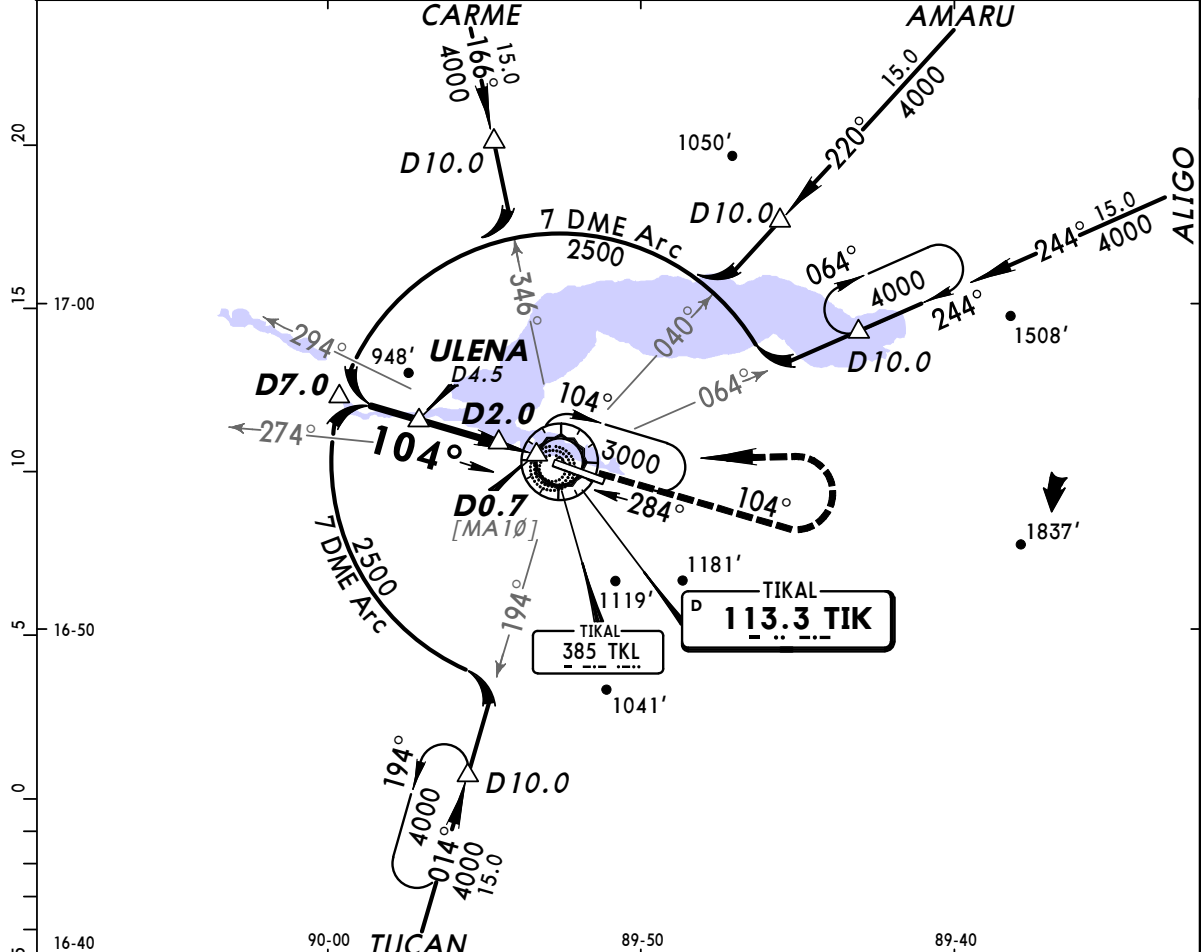
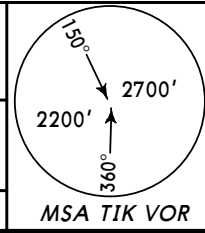
STRAIGHT-IN LANDING RWY 10 CEILING REQUIRED						CIRCLE-TO-LAND Not Authorized South of Rwy									
MDA(H) 840' (433')															
CEILING-VISIBILITY						ALS out									
A	500' - 3/4					500' - 1					Max Kts	MDA(H)		CEIL-VIS	
B						500' - 1/4					90	1400' (973')		1000' - 1/4	
C						500' - 1/2					120	1600' (1173')		1200' - 1/2	
D						500' - 1					140	1700' (1273')		1300' - 3	

MGMM/FRS
MUNDO MAYA INTL

JEPPESSEN
 12 APR 13 **(13-3)**

FLORES, GUATEMALA
VOR 7 DME Arc Rwy 10

TIKAL Approach (R) 121.4		TIKAL Tower 118.3		Ground 121.9	
VOR TIK 113.3	Final Apch Crs 104°	Minimum Alt ULENA 1800' (1393')	MDA(H) 840' (433')	Apt Elev 427' TDZE 407'	
MISSED APCH: Climb outbound on TIK VOR R-104 until reaching 2500', then LEFT turn to TIK VOR. Request instructions from APPROACH.					
Alt Set: IN (hPa on req)		Trans level: FL 200		Trans alt: 19000'	



Gnd speed-Kts	70	90	100	120	140	160	SALS REIL PAPI	2500' on ↑	TIK 113.3 R-104	← LT	TIK 113.3
Descent Angle [3.30°]	409	526	584	701	817	934					
MAP at D0.7											

STRAIGHT-IN LANDING RWY 10 CEILING REQUIRED				CIRCLE-TO-LAND Not Authorized South of Rwy			
MDA(H) 840' (433')							
CEILING-VISIBILITY		ALS out		Max Kts	MDA(H)	CEIL-VIS	
A	500' - 3/4	500' - 1		90	1400' (973')	1000' - 1/4	
B		500' - 1/4		120	1600' (1173')	1200' - 1/2	
C		500' - 1/2		140	1700' (1273')	1300' - 3	
D	500' - 1	500' - 1/2		165			