

MGGT/GUA



GUATEMALA CITY, GUATEMALA

LA AURORA INTL

12 APR 13 (10-1R)

RADAR MINIMUM ALTITUDES

AURORA Approach (R)

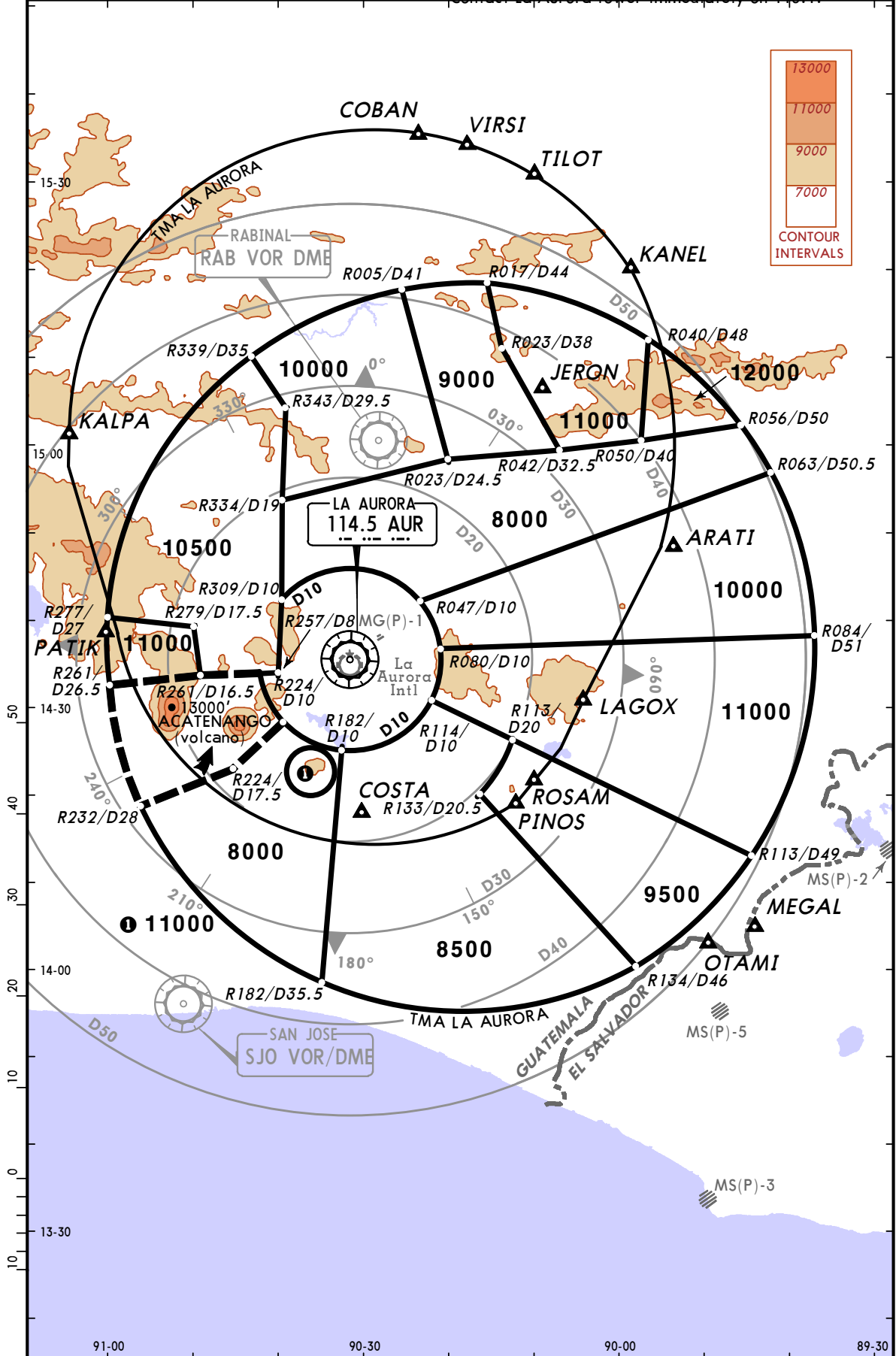
119.3

Apt Elev

4952'

Alt Set: INCHES Trans level: FL 200 Trans alt: 19000'

1. Chart to be used to check the assigned altitudes under radar control. 2. Lost comm failure procedure: Contact La Aurora tower immediately on 118.1.



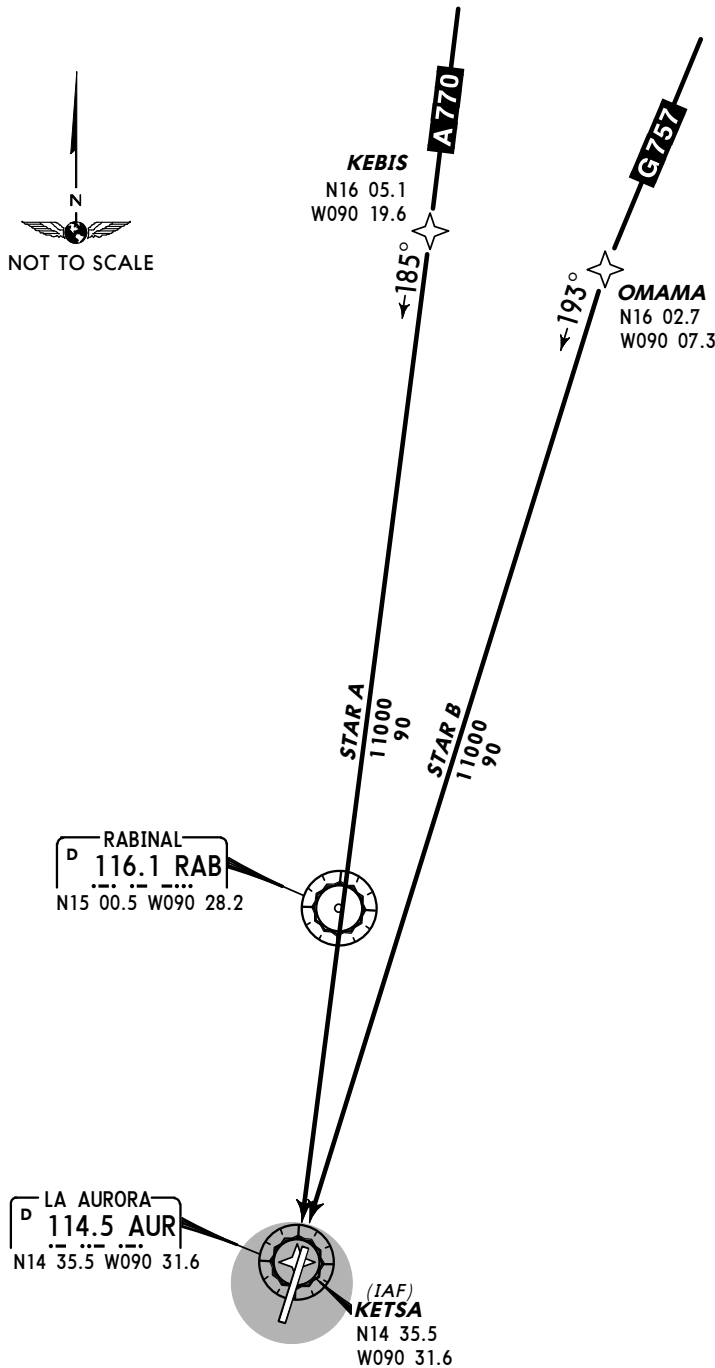
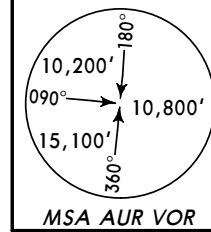
CHANGES: TMA La Aurora, notes.

MGGT/GUA  
 LA AURORA INTL

**JEPPESEN** GUATEMALA CITY, GUATEMALA  
 (10-2) 12 APR 13 **RNAV STAR**

ATIS <b>127.65</b>	Apt Elev <b>4952'</b>	Alt Set: IN (hPa on req) Trans level: FL200    Trans alt: 19500' 1. Final approach starts at IAF KETSA with ATC clearance. 2. ATC clearance requires that the pilot continues the RNAV STAR on MEA until ATC clearance for descent.
-----------------------	--------------------------	--

**STAR RNAV A RWY 01[ARRØ1A]**  
**STAR RNAV B RWY 01[ARRØ1B]**



STAR	ROUTING
A	Airway A-770 to KEBIS, to KETSA.
B	Airway G-757 to OMAMA, to KETSA.

MGGT/GUA  
 LA AURORA INTL



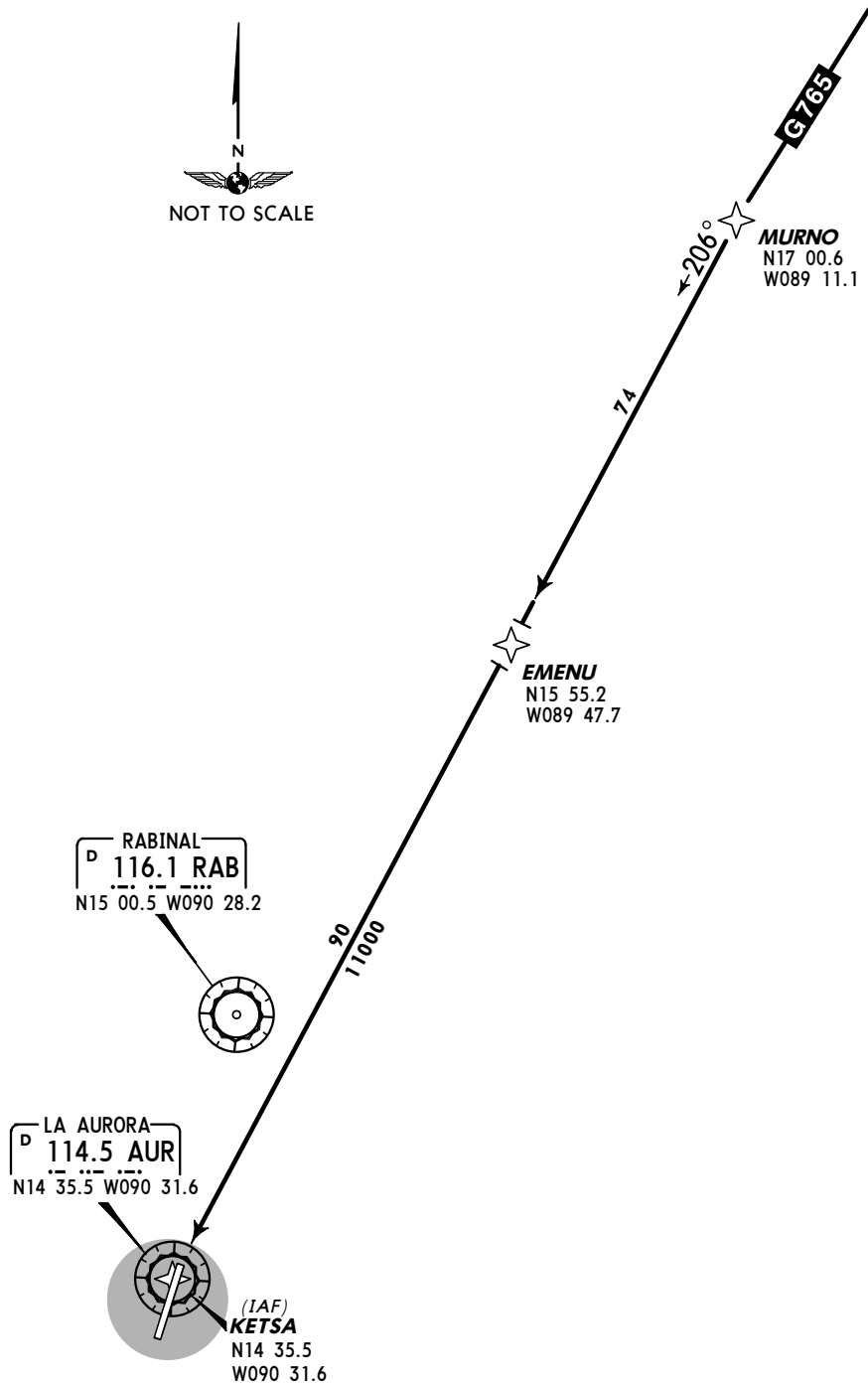
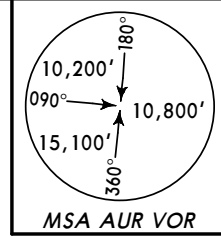
GUATEMALA CITY, GUATEMALA

10-2A 12 APR 13

**RNAV STAR**

ATIS <b>127.65</b>	Apt Elev <b>4952'</b>	Alt Set: IN (hPa on req) Trans level: FL200 Trans alt: 19500' 1. Final approach starts at IAF KETSA with ATC clearance. 2. ATC clearance requires that the pilot continues the RNAV STAR on MEA until ATC clearance for descent.
-----------------------	--------------------------	---

**STAR RNAV C RWY 01**  
**[ARRØ1C]**



**ROUTING**

Airway G-765 to MURNO, to EMENU, to KETSA (AUR).

MGGT/GUA  
 LA AURORA INTL



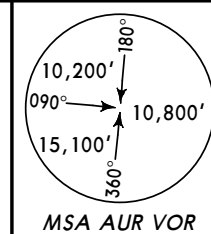
GUATEMALA CITY, GUATEMALA

10-2B 12 APR 13

**RNAV STAR**

ATIS <b>127.65</b>	Apt Elev <b>4952'</b>	Alt Set: IN (hPa on req) Trans level: FL200 Trans alt: 19500' 1. Final approach starts at IAF OLIRA with ATC clearance. 2. ATC clearance requires that the pilot continues the RNAV STAR on MEA until ATC clearance for descent.
-----------------------	--------------------------	---

**STAR RNAV A RWY 19 [ARR19A]**  
**STAR RNAV B RWY 19 [ARR19B]**



**KEBIS**  
 N16 05.1  
 W090 19.6

**OMAMA**  
 N16 02.7  
 W090 07.3

**STAR A**  
 11000  
 75

**STAR B**  
 11000  
 75

**RABINAL**  
 D 116.1 RAB  
 N15 00.5 W090 28.2

(IAF)  
**OLIRA**  
 N14 49.6  
 W090 26.3

**LA AURORA**  
 D 114.5 AUR  
 N14 35.5 W090 31.6

Direct distance from OLIRA to:  
 La Aurora Intl **16 NM**

STAR	ROUTING
A	Airway A-770 to KEBIS, to OLIRA.
B	Airway G-757 to OMAMA, to OLIRA.

MGGT/GUA  
 LA AURORA INTL

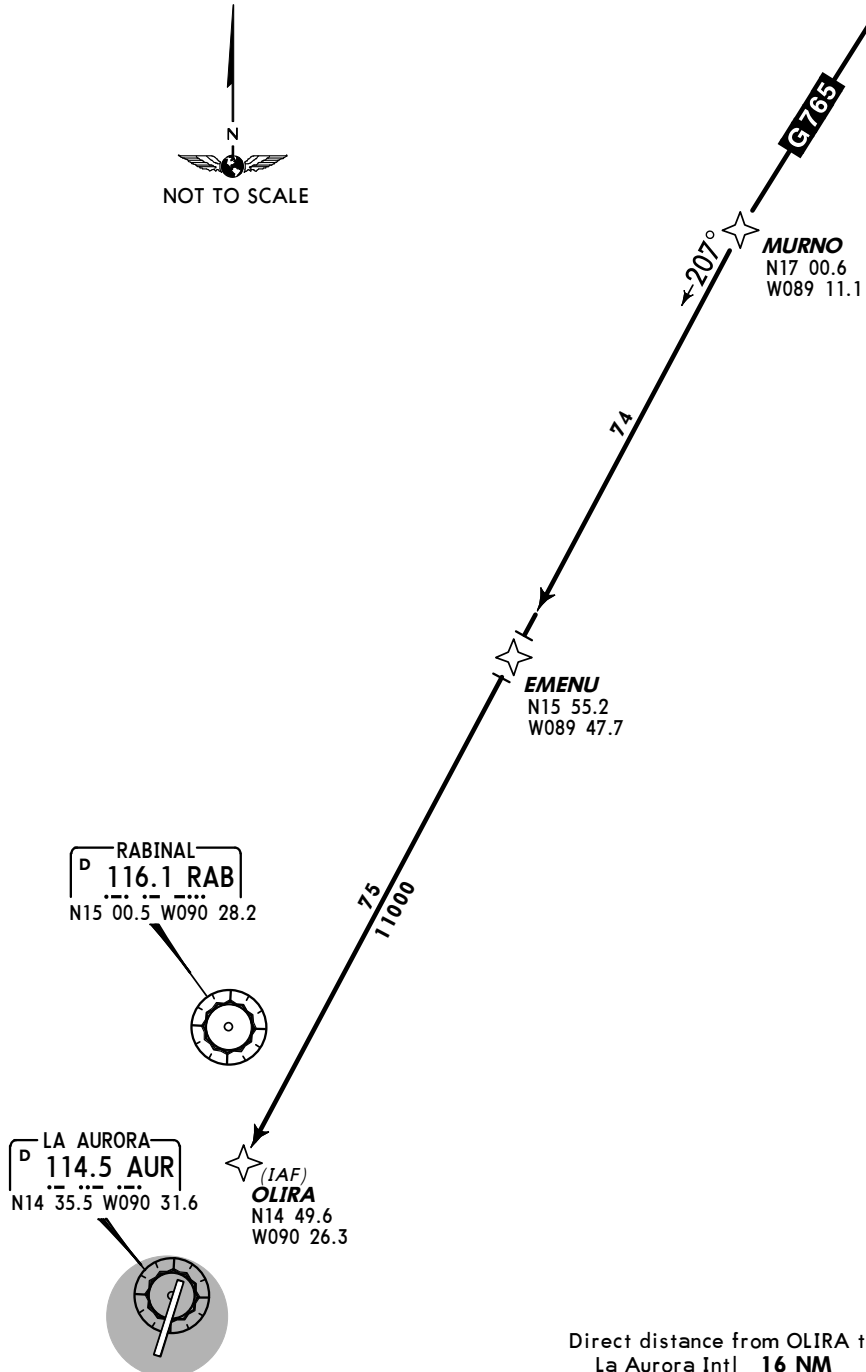
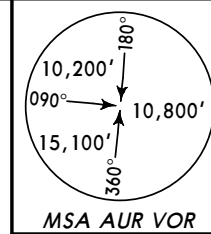
**JEPPESEN**  
 10-2C 12 APR 13

GUATEMALA CITY, GUATEMALA

**RNAV STAR**

ATIS <b>127.65</b>	Apt Elev <b>4952'</b>	Alt Set: IN (hPa on req) Trans level: FL200    Trans alt: 19500' 1. Final approach starts at IAF OLIRA with ATC clearance. 2. ATC clearance requires that the pilot continues the RNAV STAR on MEA until ATC clearance for descent.
-----------------------	--------------------------	--

**STAR RNAV C RWY 19**  
**[ARR19C]**



Direct distance from OLIRA to:  
 La Aurora Intl **16 NM**

**ROUTING**

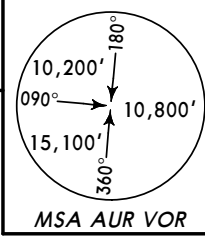
Airway G-765 to MURNO, to EMENU, to OLIRA.

MGMT/GUA  
 LA AURORA INTL

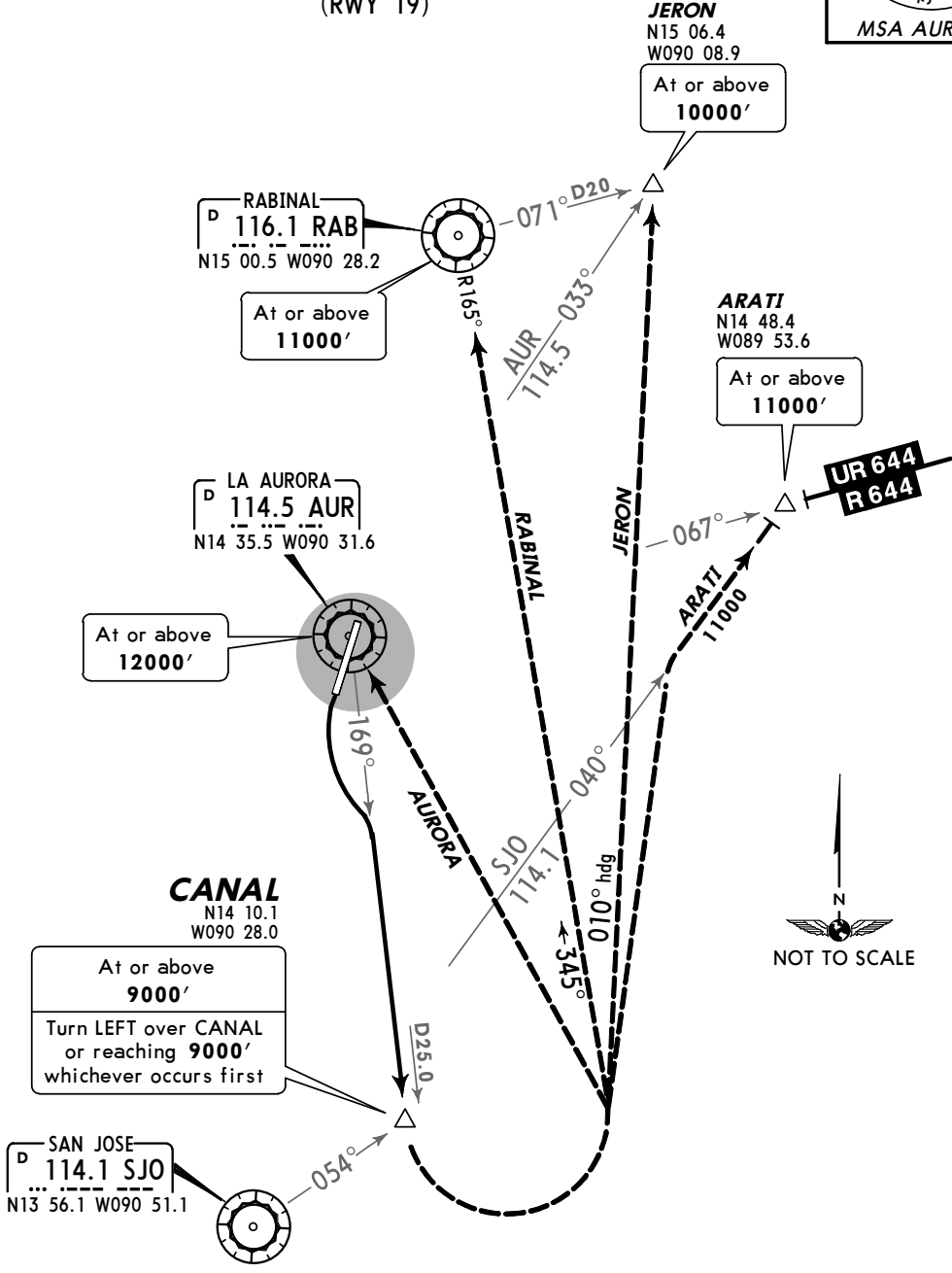
JEPPESEN  
 10-3 12 APR 13

GUATEMALA CITY, GUATEMALA  
**SID**

Apt Elev 4952' Trans level: FL200 Trans alt: 19500'



**CANAL DEPARTURE**  
**[CANAL]**  
 (RWY 19)



**INITIAL CLIMB**

Turn LEFT climbing on AUR R-169 to CANAL.

**TRANSITIONS**

<b>ARATI</b>	From over CANAL or reaching 9000' whichever occurs first, turn LEFT to intercept and proceed on SJO R-040 to intercept R-644/UR-644. Continue climbing to 11000' or above, according to ATC instructions.
<b>AURORA</b>	From over CANAL or reaching 9000' whichever occurs first, turn LEFT direct to AUR.
<b>JERON</b>	From over CANAL or reaching 9000' whichever occurs first, turn LEFT on heading 010° to intercept R-630/UR-630 to JERON. Continue climbing to 11000' or above, according to ATC instructions.
<b>RABINAL</b>	From over CANAL or reaching 9000' whichever occurs first, turn LEFT intercept and proceed inbound to RAB on RAB R-165. Continue climbing to 11000' or above, according to ATC instructions.

CHANGES: Transition altitude, JERON coordinates.

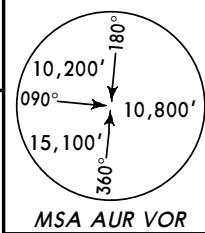
MGGT/GUA  
 LA AURORA INTL

JEPPESEN  
 10-3A 12 APR 13

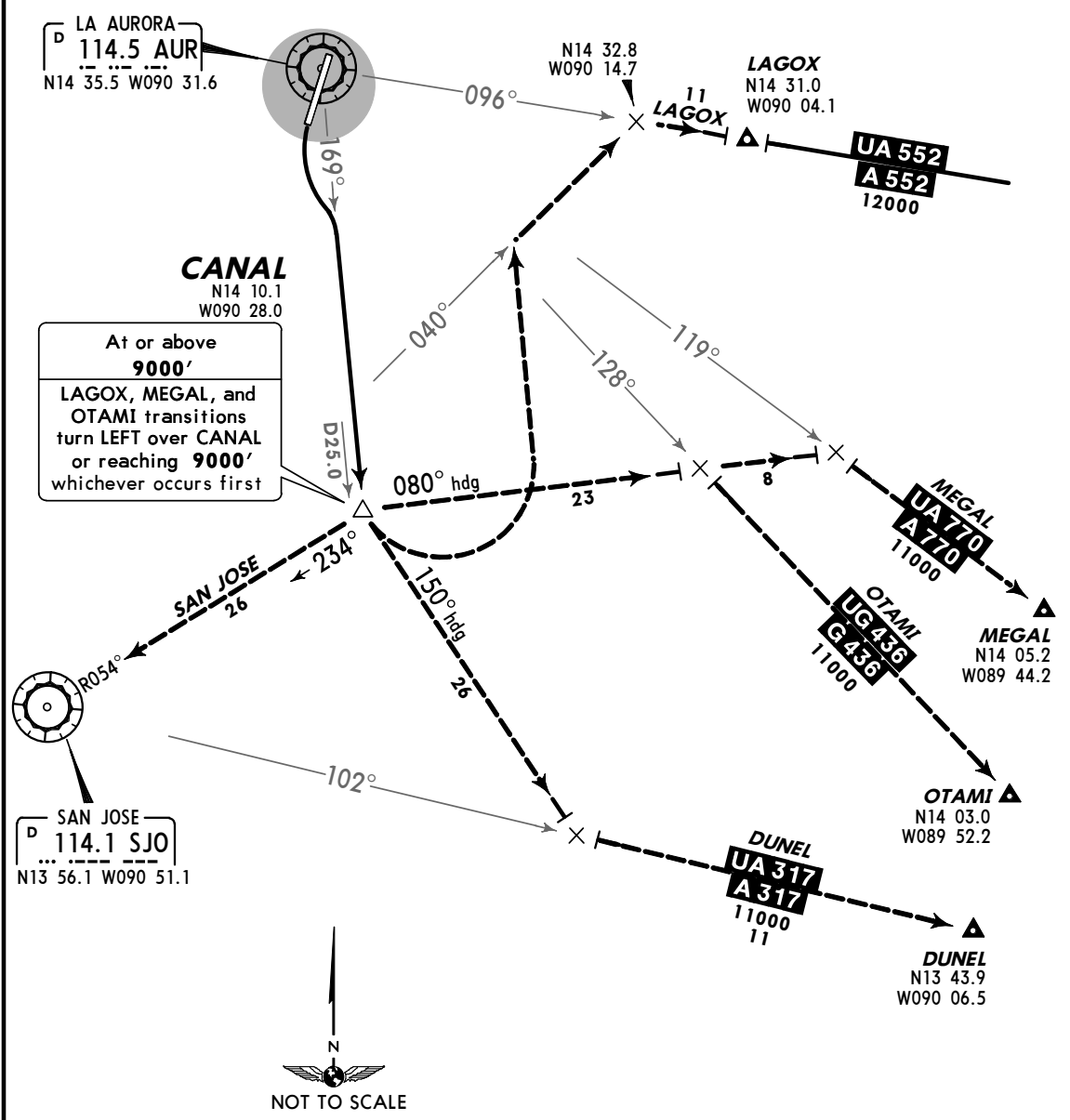
GUATEMALA CITY, GUATEMALA

SID

Apt Elev 4952' Trans level: FL200 Trans alt: 19500'



CANAL 2 DEPARTURE  
 [CANAL2]  
 (RWY 19)



INITIAL CLIMB

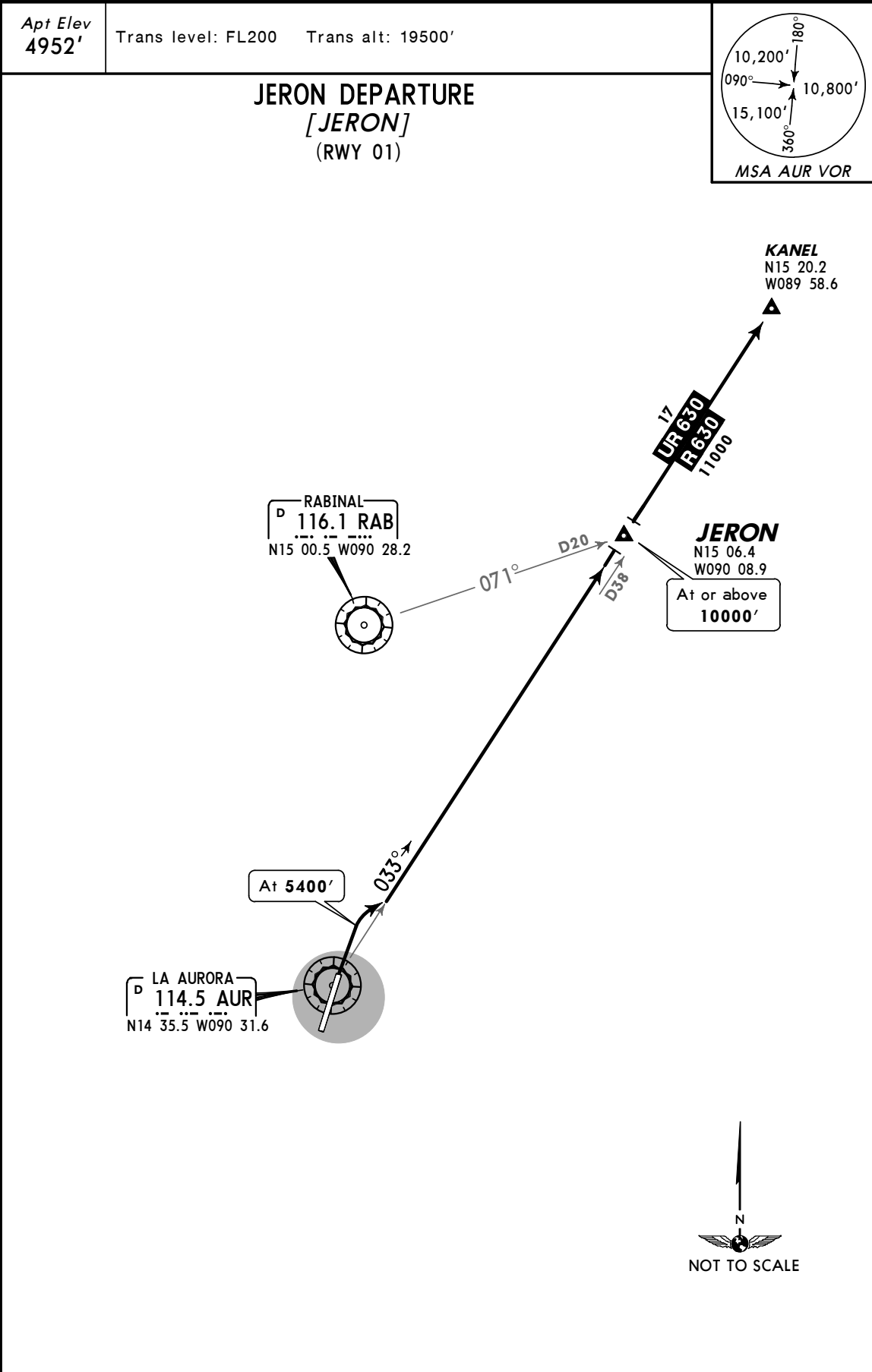
Turn LEFT climbing on AUR R-169 to CANAL.

TRANSITIONS		ALTITUDE
DUNEL	From over CANAL, turn LEFT to intercept A-317/UA-317.	Continue climbing to 11000' or above, according to ATC instructions.
LAGOX	From over CANAL or reaching 9000' whichever occurs first, turn LEFT to intercept A-552/UA-552.	
MEGAL	From over CANAL or reaching 9000' whichever occurs first, turn LEFT on heading 080° to intercept A-770/UA-770.	
OTAMI	From over CANAL or reaching 9000' whichever occurs first, turn LEFT on heading 080° to intercept G-436/UG-436.	
SAN JOSE	From over CANAL, turn RIGHT to intercept SJO R-054 to SJO. Continue according to ATC instructions.	

MGGT/GUA  
LA AURORA INTL

JEPPESEN GUATEMALA CITY, GUATEMALA  
(10-3B) 12 APR 13

SID



**INITIAL CLIMB**

Climb until reaching 5400', turn RIGHT to intercept and proceed on AUR R-033 to JERON. Continue climbing to 11000' or above, according to ATC instructions.

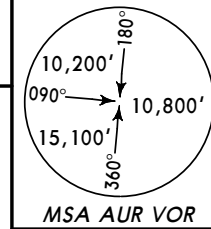


MGGT/GUA  
 LA AURORA INTL

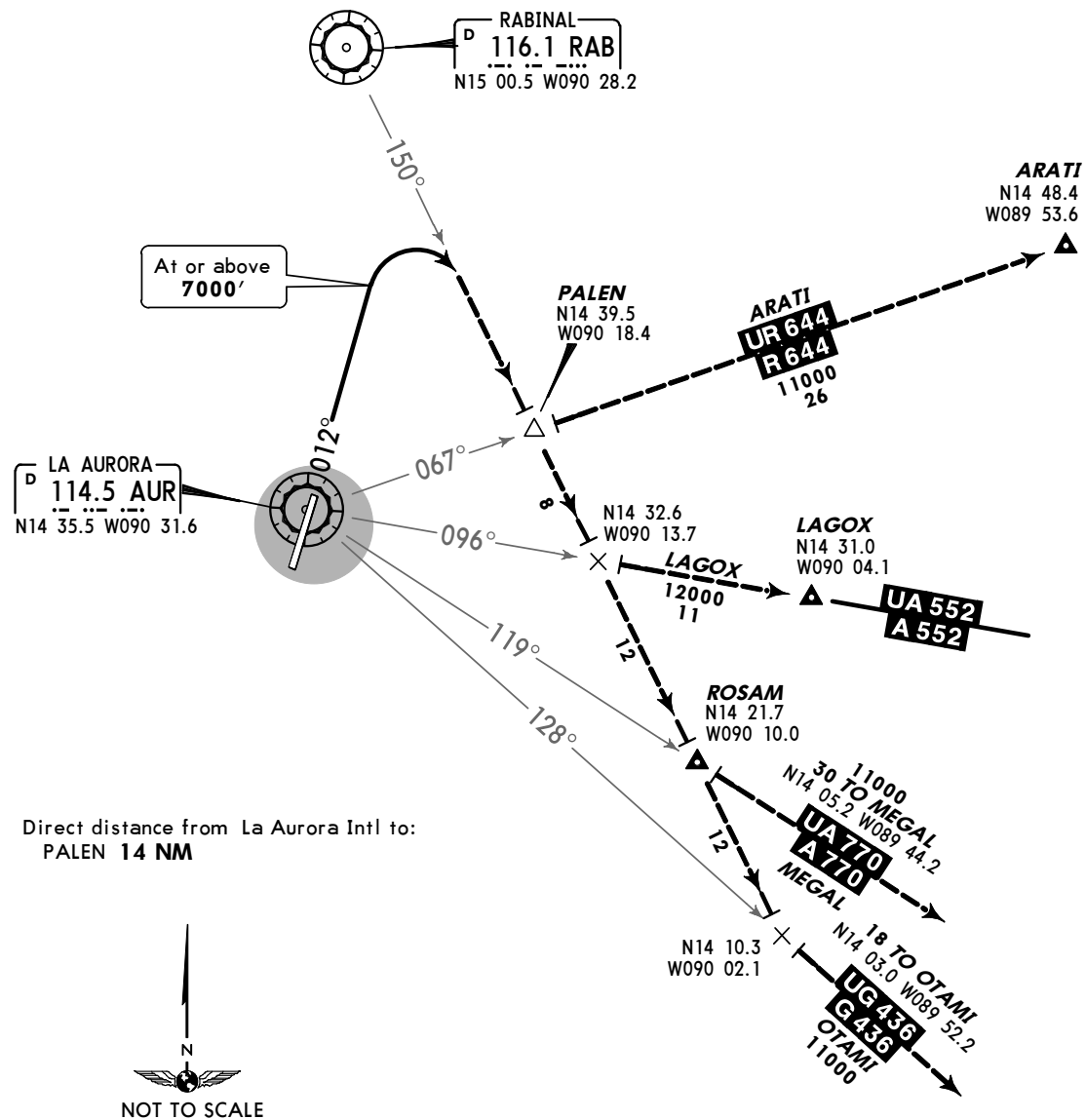
**JEPPESEN** GUATEMALA CITY, GUATEMALA  
 (10-3C) 12 APR 13

**SID**

Apt Elev 4952' Trans level: FL200 Trans alt: 19500'



**PALEN DEPARTURE**  
 [PALEN]  
 (RWY 01)



**INITIAL CLIMB**

Climb on AUR R-012 until reaching 7000' or above turn RIGHT to intercept RAB R-150.

**TRANSITIONS**

<b>ARATI</b>	Continue climbing on RAB R-150 to intercept R-644/UR-644 at or above 11000', according to ATC instructions.
<b>LAGOX</b>	Continue climbing on RAB R-150 to intercept A-552/UA-552 at or above 12000', according to ATC instructions.
<b>MEGAL</b>	Continue climbing on RAB R-150 to intercept A-770/UA-770 at or above 11000', according to ATC instructions.
<b>OTAMI</b>	Continue climbing on RAB R-150 to intercept G-436/UG-436 at or above 11000', according to ATC instructions.

MGMT/GUA  
 LA AURORA INTL

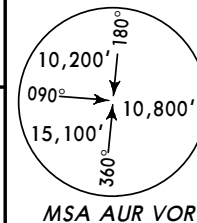
**JEPPESEN**  
 10-3D 12 APR 13

GUATEMALA CITY, GUATEMALA

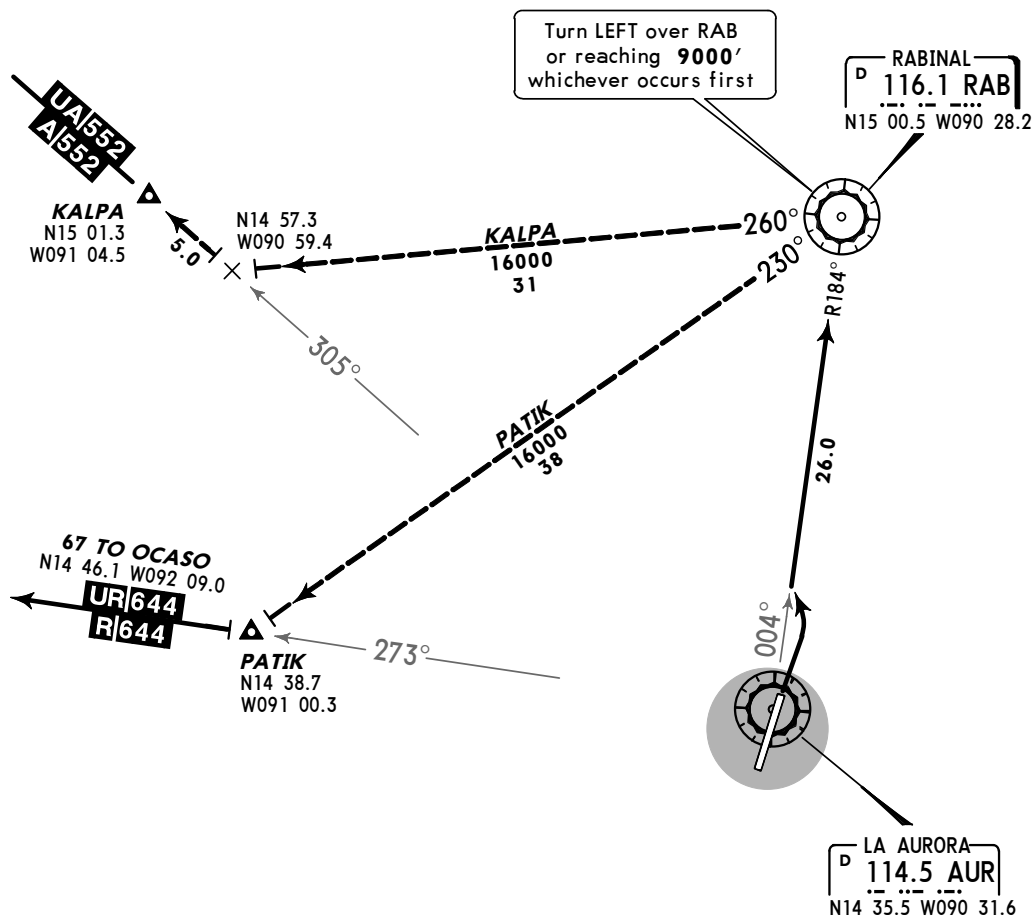
**SID**

Apt Elev  
 4952'

Trans level: FL200 Trans alt: 19500'



**RABINAL 2 DEPARTURE**  
 [RAB2]  
 (RWY 01)



**INITIAL CLIMB**

Turn LEFT climbing on AUR R-004.

TRANSITIONS		ALTITUDE
<b>KALPA</b>	From over RAB or reaching 9000', whichever occurs first, turn LEFT on RAB R-260 to intercept A-552/UA-552.	Continue climbing to 16000' or above, according to ATC instructions.
<b>PATIK</b>	From over RAB or reaching 9000', whichever occurs first, turn LEFT on RAB R-230 to intercept R-644/UR-644.	

MGMT/GUA  
 LA AURORA INTL

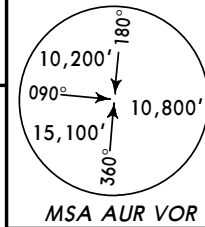
**JEPPESEN**  
 (10-3E) 12 APR 13

GUATEMALA CITY, GUATEMALA

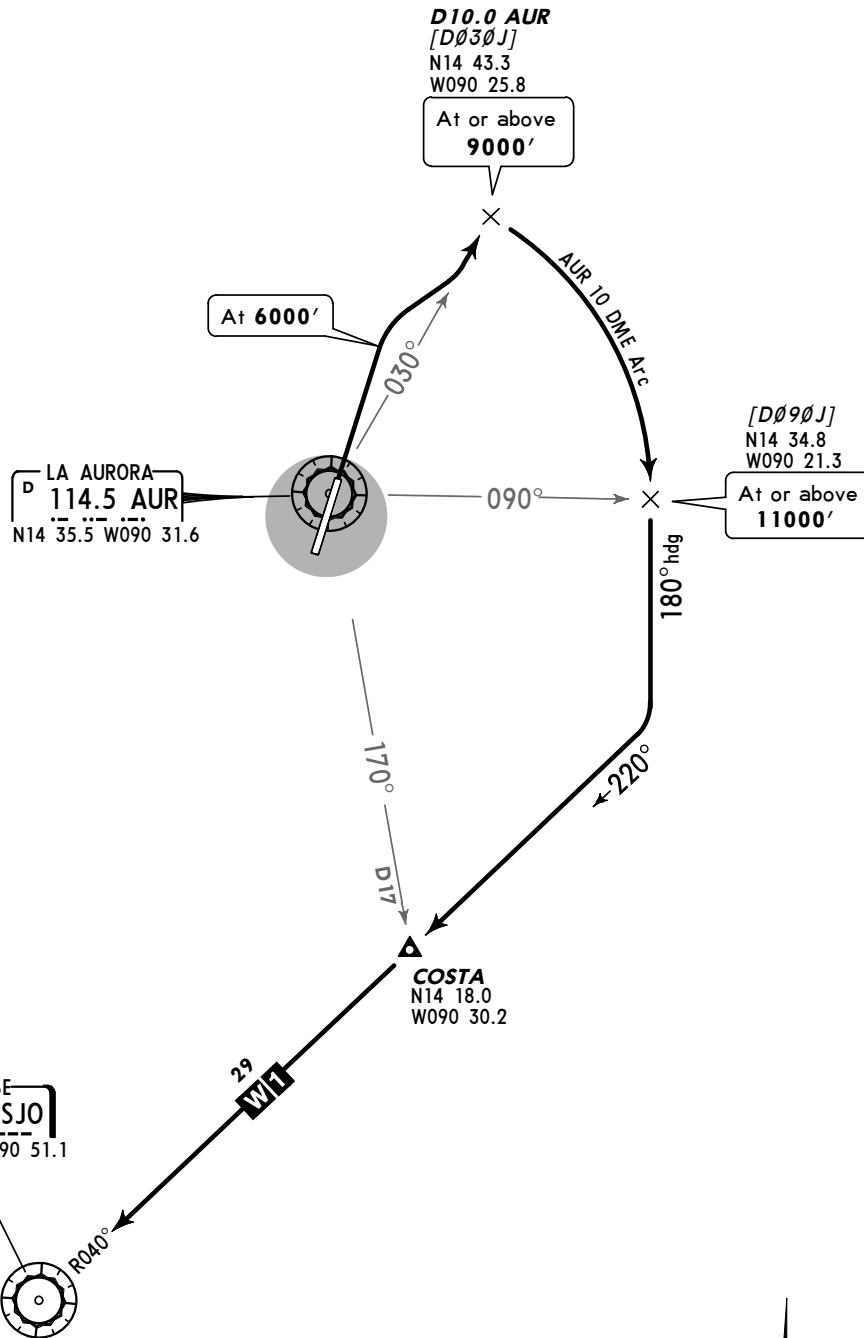
**SID**

Apt Elev  
 4952'

Trans level: FL200 Trans alt: 19500'



**SAN JOSE A DEPARTURE**  
 [SJOA]  
 (RWY 01)



This SID requires a minimum climb gradient of 400' per NM.

Gnd speed-KT	75	100	150	200	250	300
400' per NM	500	666	1000	1333	1666	2000



**INITIAL CLIMB**

Climb on runway heading until 6000', then climbing RIGHT turn to intercept AUR R-030, continue to D10.0 AUR. Fly the AUR 10 DME Arc until crossing AUR R-090, then on heading 180° to intercept SJO R-040. Then proceed according to ATC instructions.

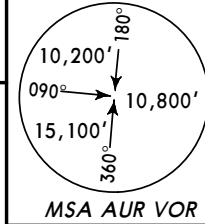
MGMT/GUA  
 LA AURORA INTL

**JEPPESEN** GUATEMALA CITY, GUATEMALA  
 (10-3F) 12 APR 13

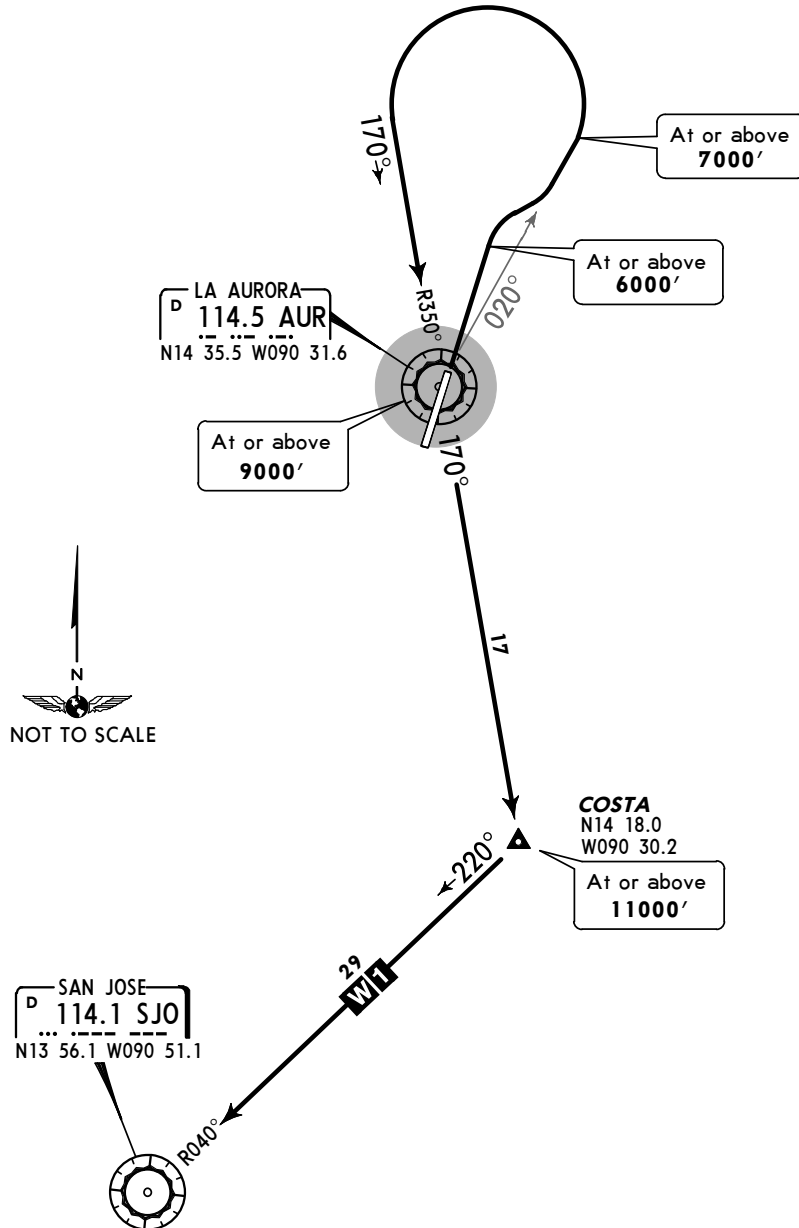
**SID**

Apt Elev  
 4952'

Trans level: FL200 Trans alt: 19500'



**SAN JOSE B DEPARTURE**  
 [SJOB]  
 (RWY 01)



This SID requires a minimum climb gradient of 300' per NM.

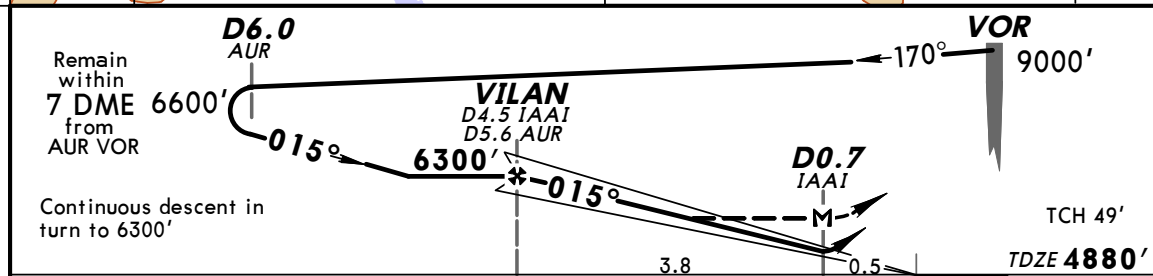
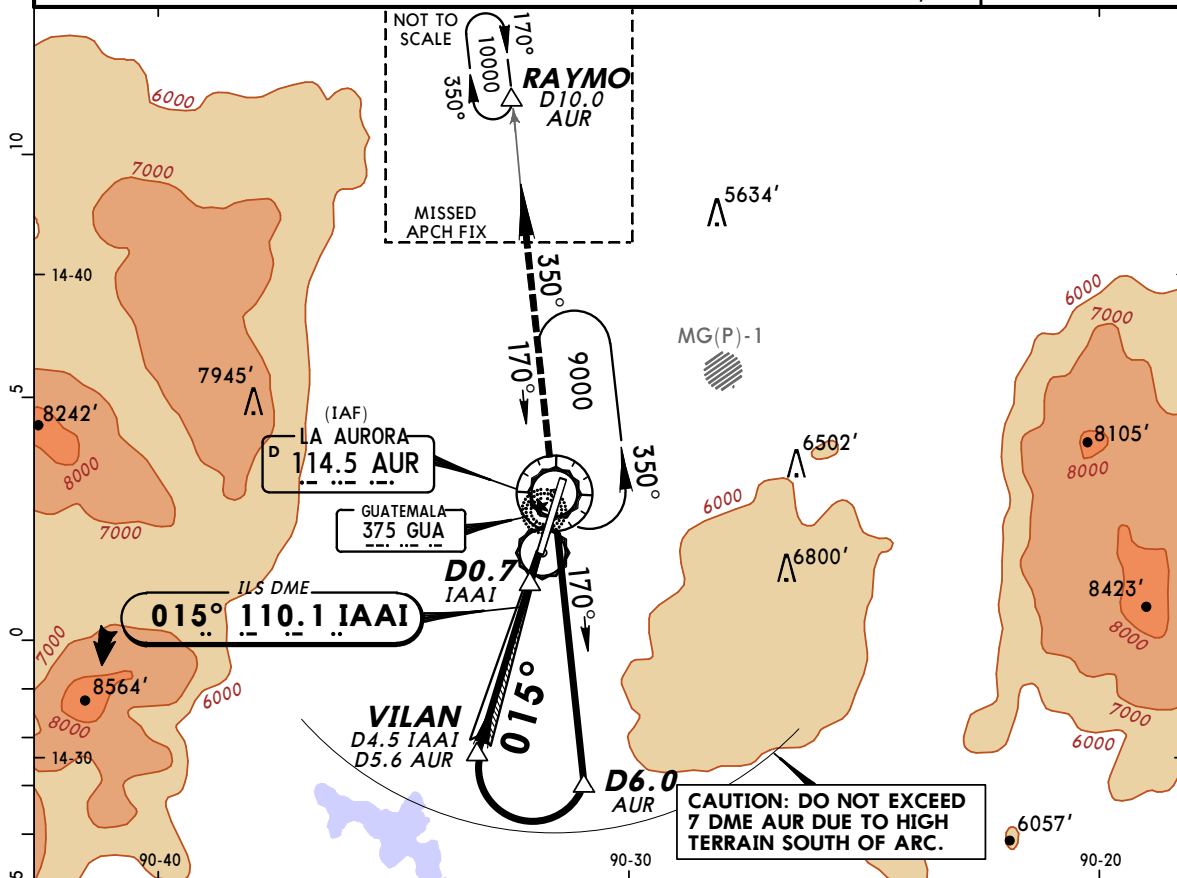
Gnd speed-KT	75	100	150	200	250	300
300' per NM	375	500	750	1000	1250	1500

**INITIAL CLIMB**

Climb runway heading until 6000', then RIGHT climbing turn to intercept AUR R-020, continue climbing to 7000', then LEFT climbing turn to intercept AUR R-350, and continue climb to AUR. Continue on AUR R-170 to COSTA, then according to ATC instructions.

**MGTT/GUA** **JEPPESEN GUATEMALA CITY, GUATEMALA**  
**LA AURORA INTL** 12 APR 13 **(11-1)** **ILS DME-1 Rwy 01**

ATIS <b>127.65</b>	LA AURORA Approach (R) <b>119.3</b>	LA AURORA Tower <b>118.1</b>	Ground <b>121.9</b>
LOC IAAI <b>110.1</b>	Final Apch Crs <b>015°</b>	Minimum Alt <b>VILAN</b> <b>6300'</b> (1420')	ILS DA(H) <b>5100'</b> (220')
Apt Elev <b>4952'</b> TDZE <b>4880'</b>			
<b>MISSED APCH:</b> Climb on course of 015° until reaching AUR VOR, then LEFT turn outbound on AUR VOR R-350 and continue climbing until reaching 10000' at RAYMO D10.0 AUR and hold. Request instructions from APP.			
Alt Set: INCHES		Trans level: FL 200	Trans alt: 19,000'



Gnd speed-Kts	70	90	100	120	140	160	SSALS	<b>015°</b>	AUR	LT	AUR	<b>10000'</b>
GS	3.00°	372	478	531	637	849	REIL	<b>114.5</b>	<b>114.5</b>		<b>R-350</b>	
MAP at D0.7 IAAI or VILAN to MAP	3.8	3:15	2:32	2:17	1:54	1:38	PAPI					

STRAIGHT-IN LANDING RWY 01			CEILING REQUIRED	CIRCLE-TO-LAND	
ILS DA(H) <b>5100'</b> (220')		LOC (GS out) MDA(H) <b>5340'</b> (460')		Not Authorized East of Rwy	
FULL	ALS out	ALS out		Max Kts	MDA(H) CEIL-VIS
CEILING-VISIBILITY				90	<b>5460'</b> (508') 600'-1600m
250' - 1200m		500' - 1600m		120	
				140	<b>5460'</b> (508') 600'-2400m
		500' - 2400m		165	<b>5680'</b> (728') 800'-3600m

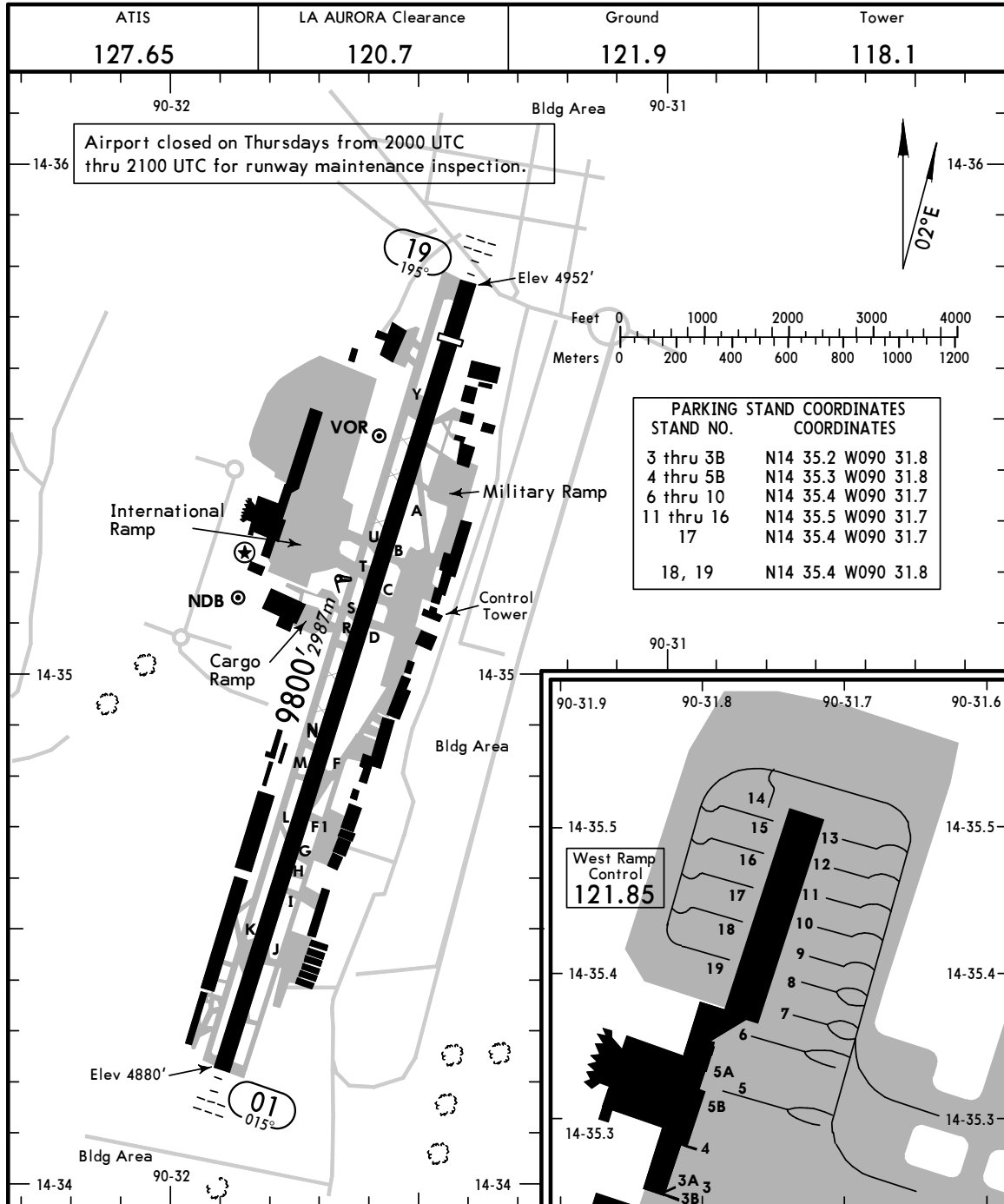
**MGGT/GUA**

Apt Elev **4952'**  
 N14 35.2 W090 31.6

**JEPPESEN GUATEMALA CITY, GUATEMALA**

12 APR 13 (11-1)

**LA AURORA INTL**



**ADDITIONAL RUNWAY INFORMATION**

RWY		USABLE LENGTHS			WIDTH
		Threshold	Glide Slope	TAKE-OFF	
01	HIRL SSALS REIL PAPI-L		8800' 2682m		197'
19	HIRL SSALS REIL PAPI-L	9080' 2768m			60m

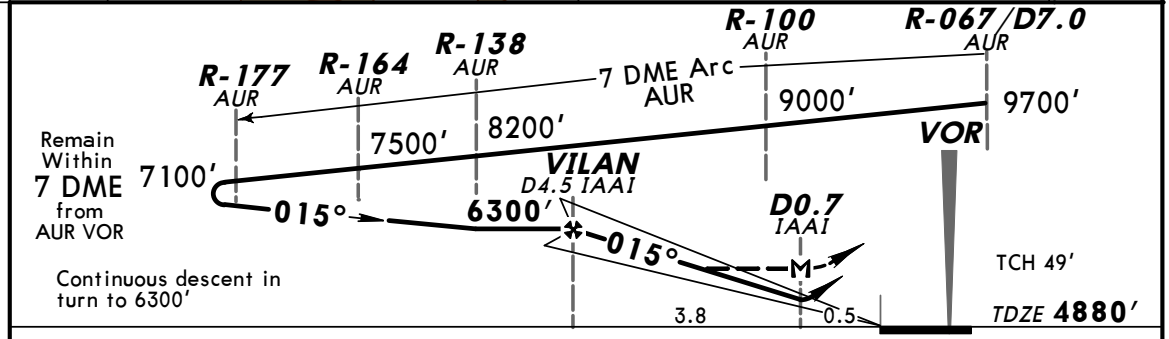
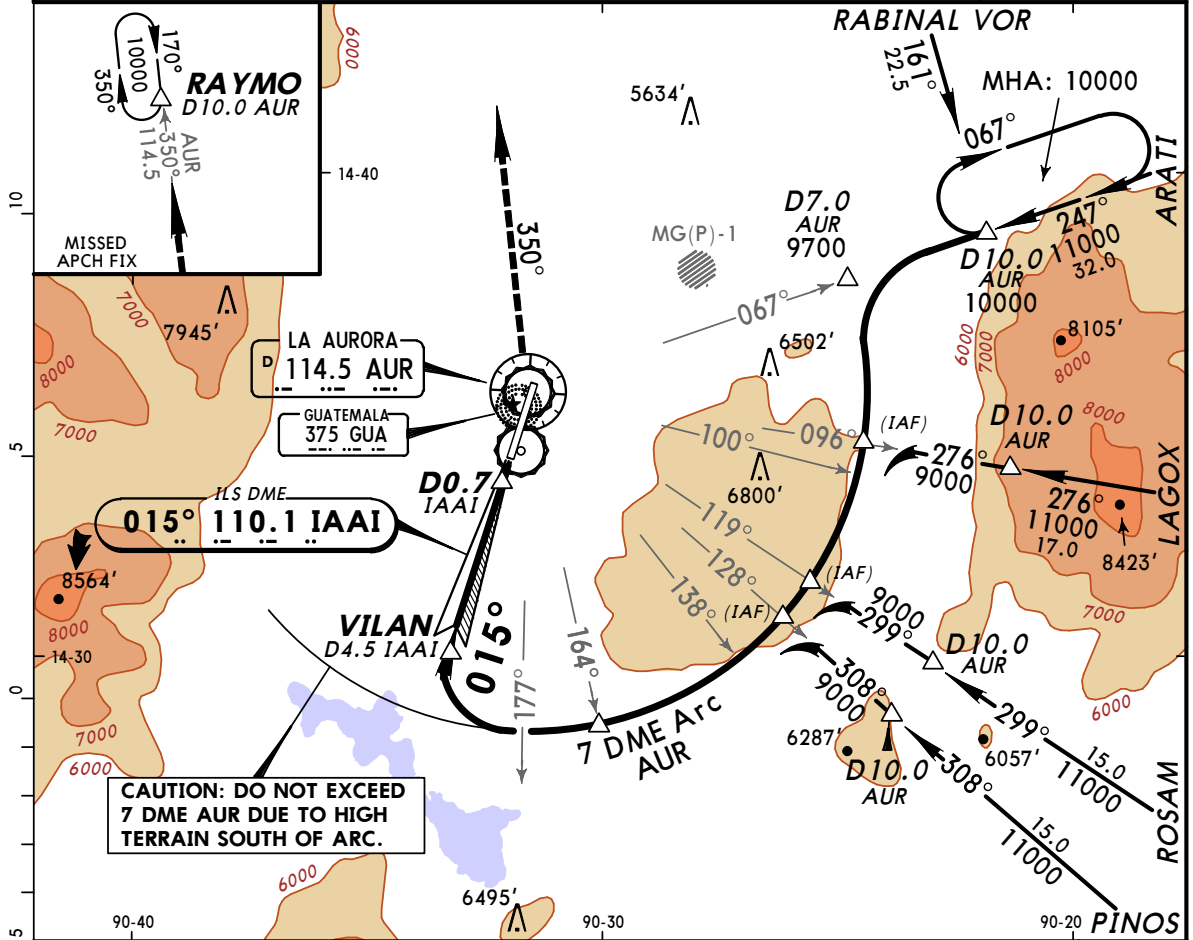
TAKE-OFF			
AIR CARRIER (JAA)	AIR CARRIER (FAR 121)		
All Rwys	All Rwys		
RCLM (Day only) or RL	Adequate Vis Ref		
A	2 Eng		
B	3 & 4 Eng		
C	1/4		
D	1/4		

CHANGES: ABN, terminal depiction, parking.



**MGTT/GUA** **JEPPESEN** **GUATEMALA CITY, GUATEMALA**  
**LA AURORA INTL** 12 APR 13 **(11-3)** **ILS DME Arc Rwy 01**

ATIS <b>127.65</b>		LA AURORA Approach (R) <b>119.3</b>		LA AURORA Tower <b>118.1</b>		Ground <b>121.9</b>	
LOC IAAI <b>110.1</b>	Final Apch Crs <b>015°</b>	Minimum Alt <b>VILAN</b> <b>6300'</b> (1420')	ILS DA(H) <b>5100'</b> (220')	Apt Elev <b>4952'</b> TDZE <b>4880'</b>			
Alt Set: INCHES		Trans level: FL 200		Trans alt: 19,000'			



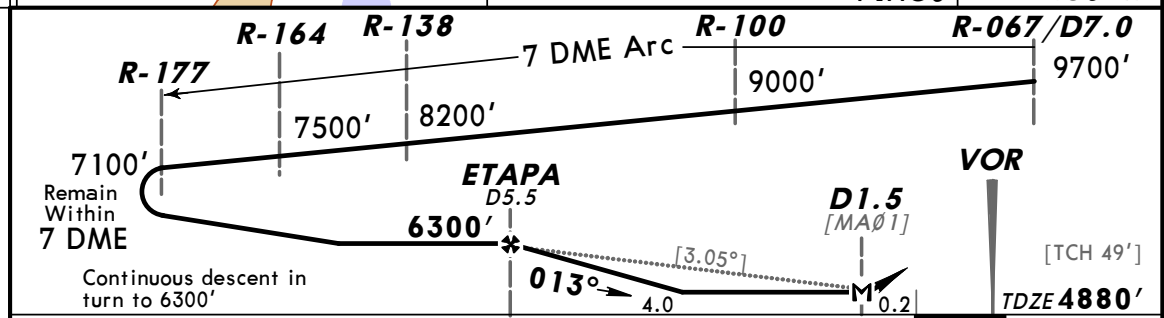
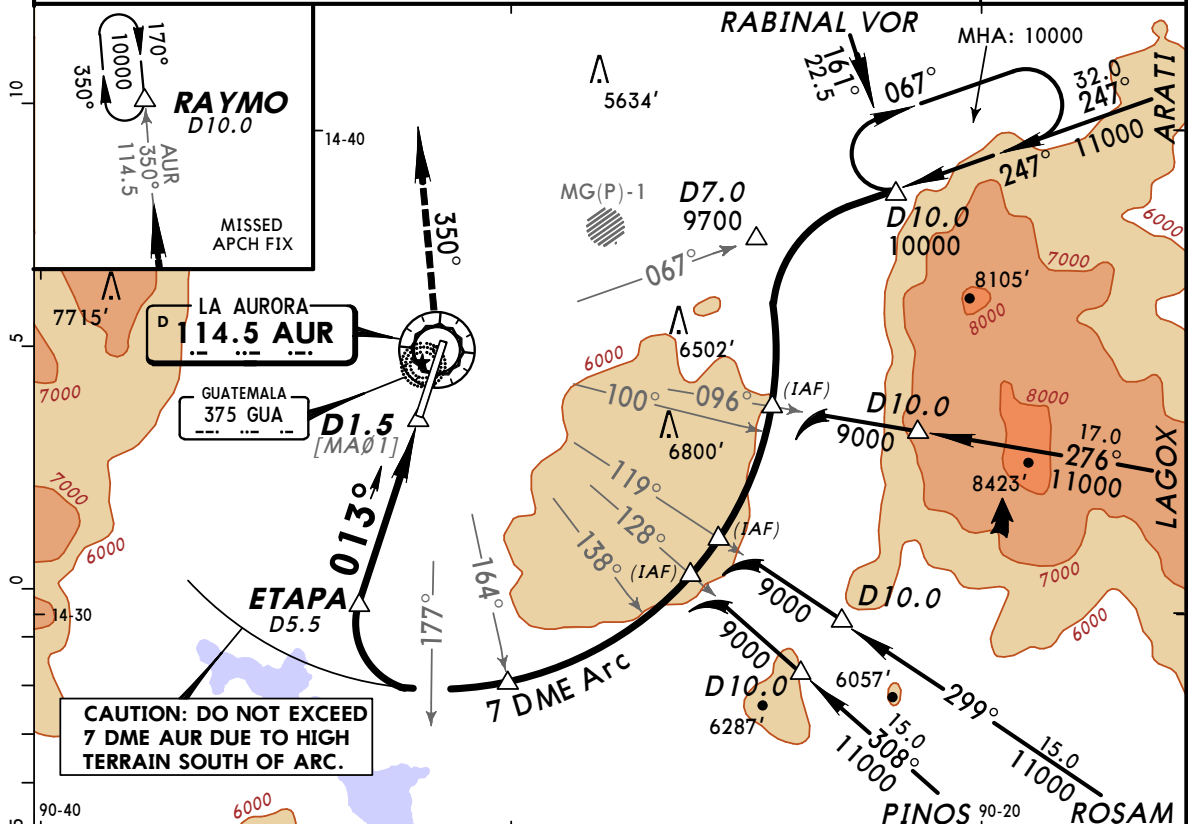
Gnd speed-Kts	70	90	100	120	140	160	SSALS <b>015°</b>	AUR <b>114.5</b>	LT	AUR <b>114.5</b>	AUR <b>10000'</b>
GS	3.00°	372	478	531	637	743					
MAP at D0.7 IAAI or VILAN to MAP	3.8	3:15	2:32	2:17	1:54	1:38	1:26	REIL PAPI			

STRAIGHT-IN LANDING RWY01		<b>CEILING REQUIRED</b>		CIRCLE-TO-LAND	
ILS DA(H) <b>5100'</b> (220')		LOC (GS out) MDA(H) <b>5340'</b> (460')		Not Authorized East of Rwy	
FULL		ALS out		Max Kts	MDA(H) / CEIL-VIS
A	250' - 1200m		500' - 1600m	90	<b>5460'</b> (508') / 600' - 1600m
B				120	
C				140	<b>5460'</b> (508') / 600' - 2400m
D				165	<b>5680'</b> (728') / 800' - 3600m



**MGTT/GUA** **JEPPESEN** **GUATEMALA CITY, GUATEMALA**  
**LA AURORA INTL** 12 APR 13 **(13-1)** **VOR DMÉ Arc Rwy 01**

ATIS <b>127.65</b>		LA AURORA Approach (R) <b>119.3</b>		LA AURORA Tower <b>118.1</b>		Ground <b>121.9</b>	
VOR AUR <b>114.5</b>	Final Apch Crs <b>013°</b>	Minimum Alt ETAPA <b>6300' (1420')</b>	MDA(H) <b>5340' (460')</b>	Apt Elev <b>4952'</b> TDZE <b>4880'</b>			
<b>MISSED APCH:</b> Climb on course of 013° until reaching AUR VOR, then LEFT turn outbound on AUR VOR R-350 and continue climbing until reaching 10000' at RAYMO D10.0 and hold. Request instructions from APP.							
Alt Set: INCHES		Trans level: FL 200		Trans alt: 19,000'		MSA AUR VOR	



Gnd speed-Kts	70	90	100	120	140	160	REIL PAPI	SSALS <b>013°</b>	AUR <b>114.5</b>	LT	AUR <b>114.5</b>	R-350	10000'
Descent Angle [3.05°]	378	486	540	648	755	863							
MAP at D1.5 or D5.5 to MAP	4.0	3:26	2:40	2:24	2:00	1:43	1:30						

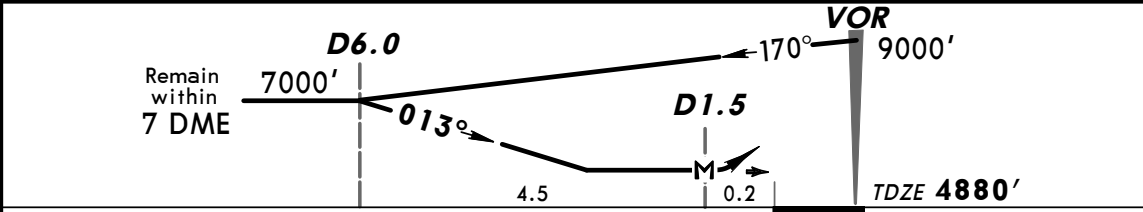
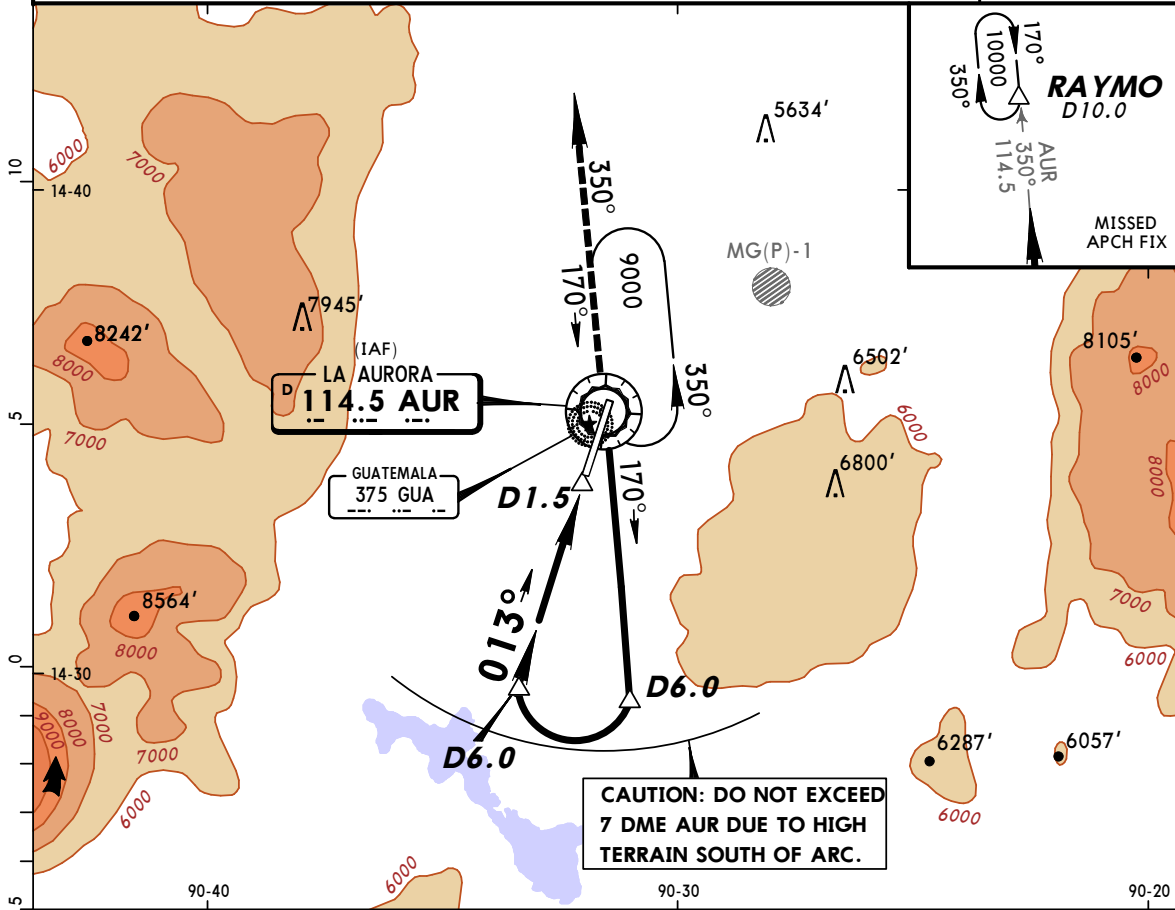
STRAIGHT-IN LANDING RWY 01		CEILING REQUIRED		CIRCLE-TO-LAND	
MDA(H) <b>5340' (460')</b>		Max Kts		Not Authorized East of Rwy	
A	CEILING-VISIBILITY	ALS out	90	MDA(H)	CEIL-VIS
B	500' - 1600m		120	5460' (508')	600' - 1600m
C			140	5460' (508')	600' - 2400m
D	500' - 4800m		165	5680' (728')	800' - 4800m

**MGGT/GUA**  
**LA AURORA INTL**

12 APR 13 **(13-2)**

**JEPPESEN GUATEMALA CITY, GUATEMALA**  
**VOR DME-1 Rwy 01**

ATIS <b>127.65</b>		LA AURORA Approach (R) <b>119.3</b>		LA AURORA Tower <b>118.1</b>		Ground <b>121.9</b>	
VOR AUR <b>114.5</b>	Final Apch Crs <b>013°</b>	No FAF		MDA(H) <b>5340' (460')</b>	Apt Elev <b>4952'</b> TDZE <b>4880'</b>		
<b>MISSED APCH:</b> Climb on course of 013° until reaching AUR VOR, then LEFT turn outbound on AUR VOR R-350 and continue climbing until reaching 10000' at RAYMO D10.0 and hold. Request instructions from APP.							
Alt Set: INCHES		Trans level: FL 200		Trans alt: 19,000'		MSA AUR VOR	



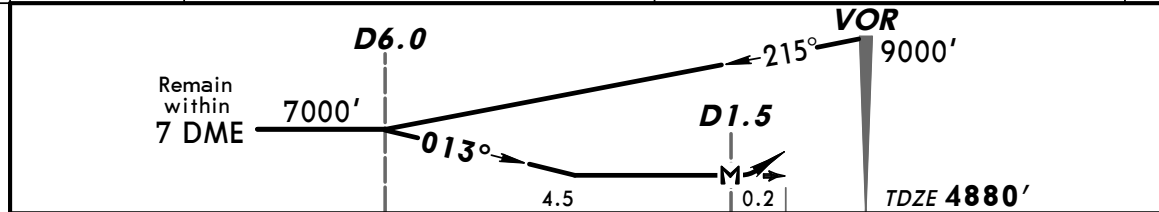
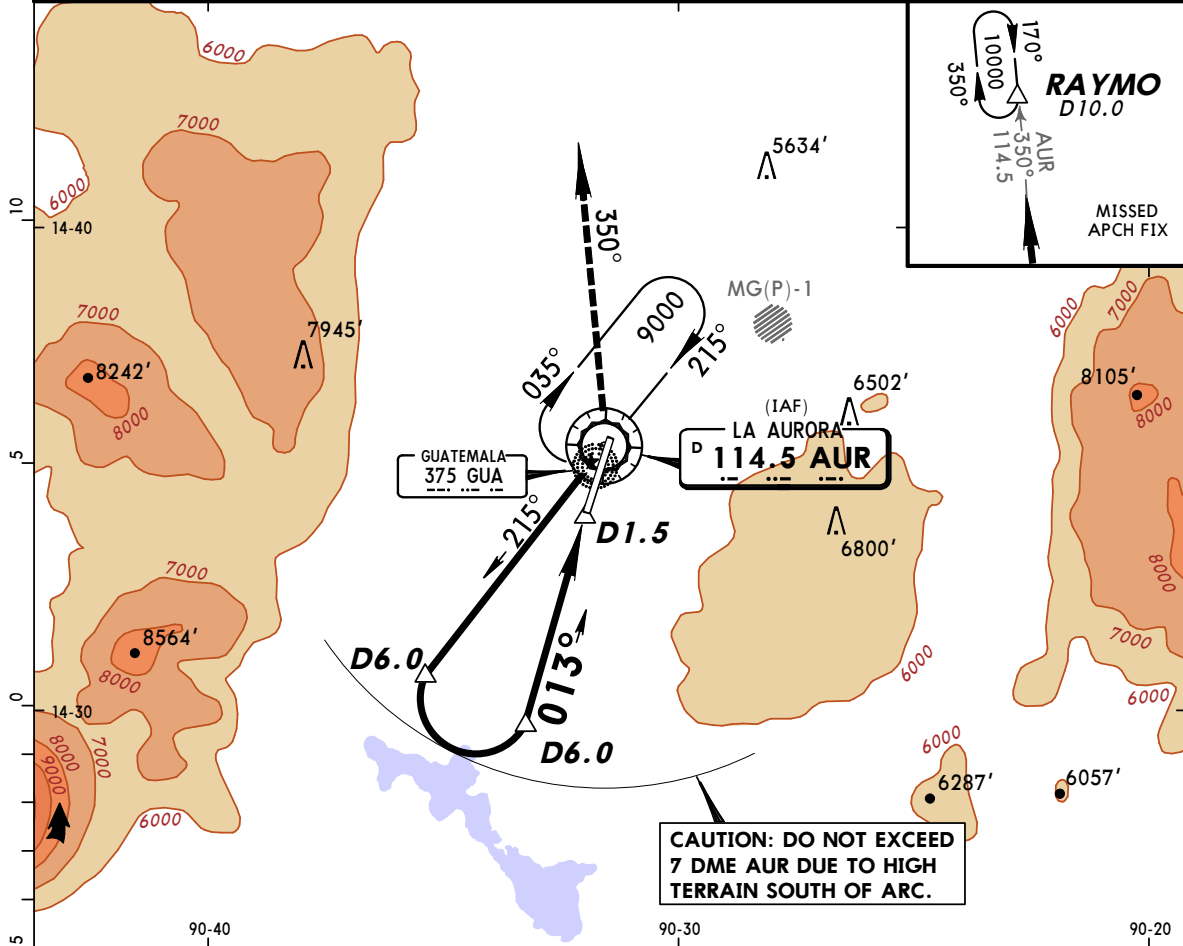
MAP at D1.5	REIL	SSALS	<b>013°</b>	AUR	LT	AUR	<b>10000'</b>
	PAPI		↑	<b>114.5</b>		<b>114.5 R-350</b>	↑

STRAIGHT-IN LANDING RWY01		<b>CEILING REQUIRED</b>		CIRCLE-TO-LAND	
MDA(H) <b>5340' (460')</b>		Not Authorized East of Rwy			
ALS out		Max Kts	MDA(H)	CEIL-VIS	
A	CEILING-VISIBILITY	90			
B	500' - 1600m	120	<b>5460' (508')</b>	600' - 1600m	
C		140	<b>5460' (508')</b>	600' - 2400m	
D	500' - 2400m	165	<b>5680' (728')</b>	800' - 3600m	

CHANGES: TDZE, minimums.

**MGTT/GUA** **JEPPESEN** **GUATEMALA CITY, GUATEMALA**  
**LA AURORA INTL** 12 APR 13 **(13-3)** **VOR DME-2 Rwy 01**

ATIS <b>127.65</b>		LA AURORA Approach (R) <b>119.3</b>		LA AURORA Tower <b>118.1</b>		Ground <b>121.9</b>	
VOR AUR <b>114.5</b>	Final Apch Crs <b>013°</b>	No FAF		MDA(H) <b>5340'</b> (460')	Apt Elev <b>4952'</b> TDZE <b>4880'</b>		
<b>MISSED APCH:</b> Climb on course of 013° until reaching AUR VOR, then LEFT turn outbound on AUR VOR R-350 and continue climbing until reaching 10000' at RAYMO D10.0 and hold. Request instructions from APP.							
Alt Set: INCHES		Trans level: FL 200		Trans alt: 19,000'		MSA AUR VOR	

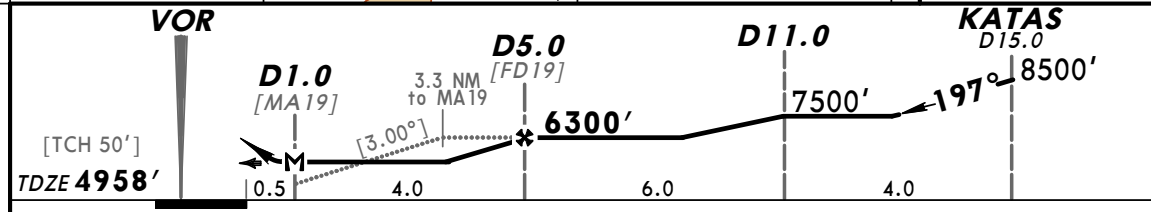
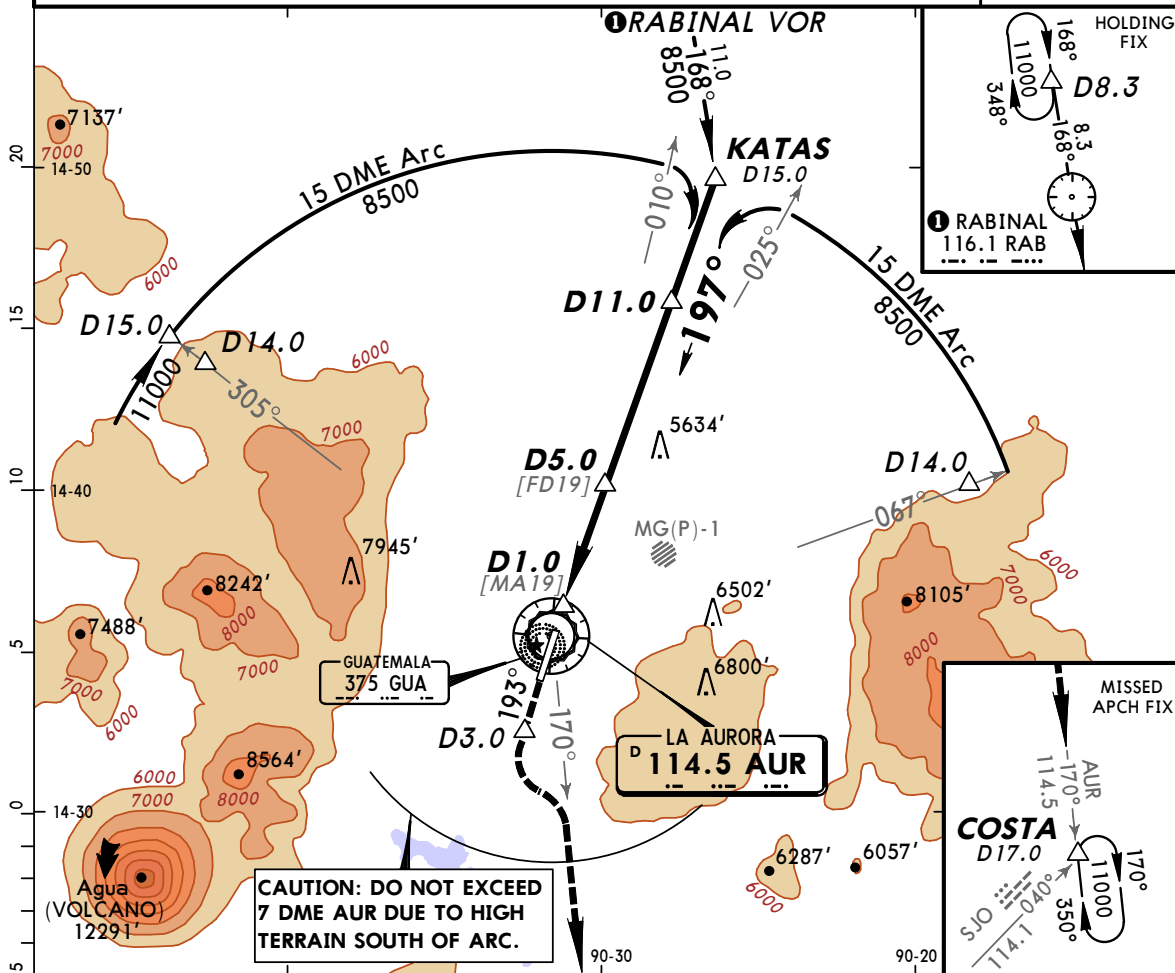


MAP at D1.5	SSALS	<b>013°</b>	AUR	AUR	<b>10000'</b>
	REIL	↑	<b>114.5</b>	LT	↑
	PAPI			<b>R-350</b>	

STRAIGHT-IN LANDING RWY 01		<b>CEILING REQUIRED</b>		CIRCLE-TO-LAND	
MDA(H) <b>5340'</b> (460')		Not Authorized East of Rwy			
	CEILING-VISIBILITY	ALS out	Max Kts	MDA(H)	CEIL-VIS
A			90	<b>5460'</b> (508')	600' - 1600m
B	500' - 1600m		120	<b>5460'</b> (508')	600' - 2400m
C			140	<b>5460'</b> (508')	600' - 2400m
D	500' - 2400m		165	<b>5680'</b> (728')	800' - 3600m

**MGTT/GUA** **JEPPESEN** **GUATEMALA CITY, GUATEMALA**  
**LA AURORA INTL** 12 APR 13 **(13-4)** **VOR DME Rwy 19**

ATIS <b>127.65</b>		LA AURORA Approach (R) <b>119.3</b>		LA AURORA Tower <b>118.1</b>		Ground <b>121.9</b>	
VOR AUR <b>114.5</b>	Final Apch Crs <b>197°</b>	Minimum Alt D5.0 <b>6300' (1342')</b>	MDA(H) <b>5440' (482')</b>	Apt Elev <b>4952'</b> TDZE <b>4958'</b>			
<b>MISSED APCH:</b> Climb on course of 193° until D3.0 SOUTH of AUR VOR, then turn LEFT to intercept AUR VOR R-170 outbound and continue climbing until reaching 11000' at COSTA D17.0 and hold. Request instructions from APP.							
Alt Set: INCHES		Trans level: FL 200		Trans alt: 19,000'		MSA AUR VOR	



Gnd Speed-Kts	70	90	100	120	140	160	SSALS REIL PAPI	↑ on 193° until SOUTH AUR VOR	
Descent Angle [3.00°]	372	478	531	637	743	849			
MAP at D1.0									

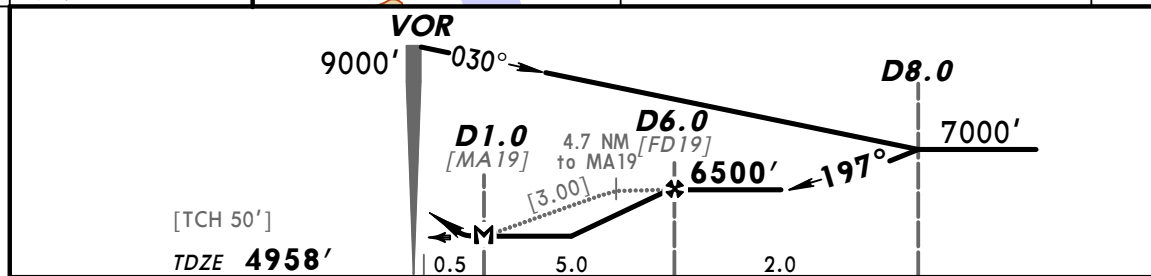
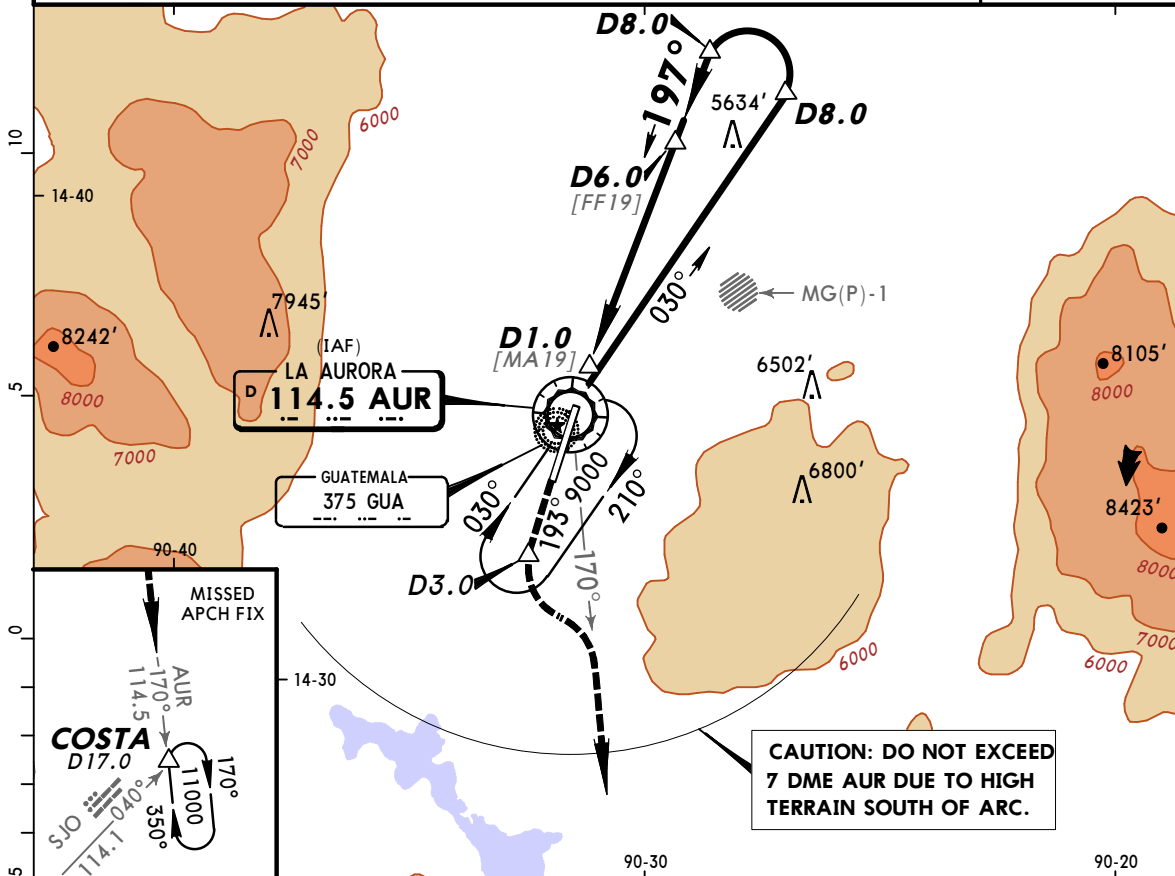
STRAIGHT-IN LANDING RWY 19 <b>CEILING REQUIRED</b>				CIRCLE-TO-LAND Not Authorized East of Rwy			
MDA(H) <b>5440' (482')</b>							
	CEILING-VISIBILITY	ALS out	Max Kts	MDA(H)	CEIL-VIS		
A	500' - 1600m		90	<b>5520' (568')</b>	600' - 1600m		
B	500' - 1600m		120	<b>5620' (668')</b>	700' - 1600m		
C	500' - 2000m		140	<b>5620' (668')</b>	700' - 2800m		
D	500' - 2400m		165	<b>5860' (908')</b>	1000' - 4800m		

MGGT/GUA  
 LA AURORA INTL

12 APR 13 (13-5)

JEPPESEN GUATEMALA CITY, GUATEMALA  
 VOR Rwy 19

ATIS 127.65		LA AURORA Approach (R) 119.3		LA AURORA Tower 118.1		Ground 121.9	
VOR AUR 114.5	Final Apch Crs 197°	Minimum Alt D6.0 6500' (1542')	MDA(H) 5860' (902')	Apt Elev 4952' TDZE 4958'			
<p><b>MISSED APCH:</b> Climb on course of 193° until D3.0 SOUTH of AUR VOR, then turn LEFT to intercept AUR VOR R-170 outbound and continue climbing until reaching 11000' at COSTA D17.0 and hold. Request instructions from APP.</p>							
Alt Set: INCHES		Trans level: FL 200		Trans alt: 19,000'		MSA AUR VOR	



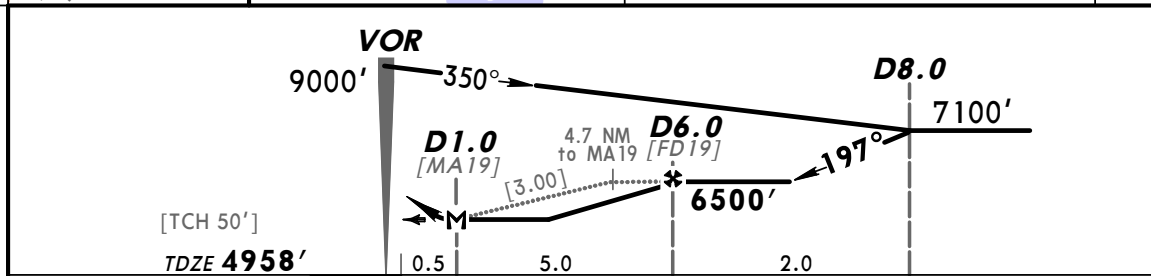
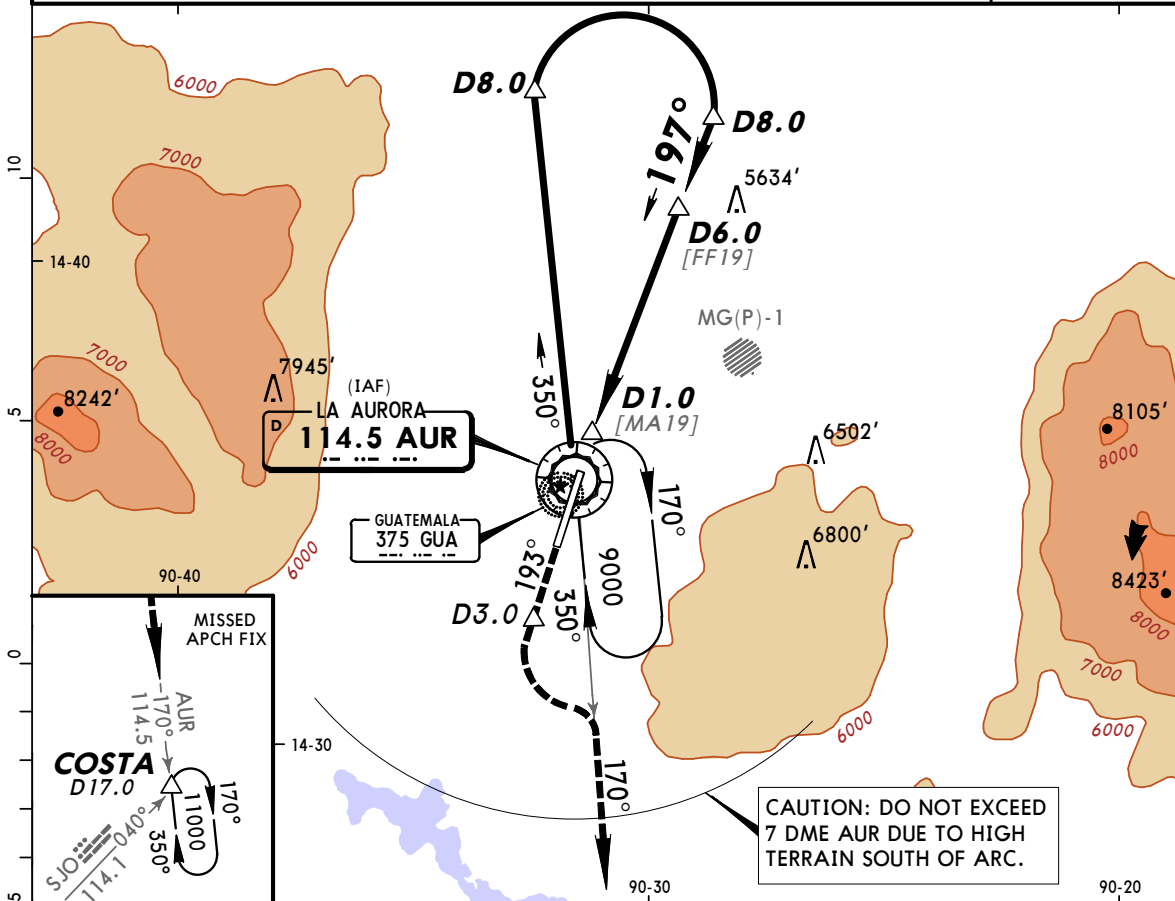
Gnd speed-Kts	70	90	100	120	140	160	SSALS REIL PAPI	↑ on 193° until SOUTH AUR VOR	
Descent Angle [3.00°]	372	478	531	637	743	849			
MAP at D1.0									

STRAIGHT-IN LANDING RWY 19			<b>CEILING REQUIRED</b>			CIRCLE-TO-LAND Not Authorized East of Rwy			
MDA(H) 5860' (902')			ALS out			Max Kts			
CEILING-VISIBILITY						MDA(H) CEIL-VIS			
A	1000' - 2000m			90			5860' (908') 1000' - 2000m		
B	1000' - 4400m			120			5860' (908') 1000' - 4400m		
C	1000' - 4800m			140			5860' (908') 1000' - 4800m		
D	1000' - 4800m			165			5860' (908') 1000' - 4800m		

**MGTT/GUA**  
**LA AURORA INTL**

**JEPPESEN GUATEMALA CITY, GUATEMALA**  
 12 APR 13 (13-6)  
**VOR DME-3 Rwy 19**

ATIS <b>127.65</b>		LA AURORA Approach (R) <b>119.3</b>		LA AURORA Tower <b>118.1</b>		Ground <b>121.9</b>
VOR AUR <b>114.5</b>	Final Apch Crs <b>197°</b>	Minimum Alt <b>D6.0</b> 6500' (1542')	MDA(H) <b>5440'</b> (482')	Apt Elev 4952' TDZE 4958'		
<b>MISSED APCH:</b> Climb on course of 193° until D3.0 SOUTH of AUR VOR, then turn LEFT to intercept AUR VOR R-170 outbound and continue climbing until reaching 11000' at COSTA D17.0 and hold. Request instructions from APP.						
Alt Set: INCHES		Trans level: FL 200		Trans alt: 19,000'		MSA AUR VOR



Gnd speed-Kts	70	90	100	120	140	160	SSALS REIL PAPI on 193° until SOUTH AUR VOR
Descent Angle [3.00°]	372	478	531	637	743	849	
MAP at D1.0							

STRAIGHT-IN LANDING RWY 19 <b>CEILING REQUIRED</b>		CIRCLE-TO-LAND	
MDA(H) <b>5440'</b> (482')		Not Authorized East of Rwy	
	CEILING-VISIBILITY	Max Kts	MDA(H) CEIL-VIS
A	500'-1600m	90	5860' (908') 1000'-2000m
B	500'-2000m	120	5860' (908') 1000'-4400m
C	500'-2400m	140	5860' (908') 1000'-4800m
D	500'-2400m	165	5860' (908') 1000'-4800m